

Product datasheet for **RC210506**

Multimerin 2 (MMRN2) (NM_024756) Human Tagged ORF Clone

Product data:

Product Type:	Expression Plasmids
Product Name:	Multimerin 2 (MMRN2) (NM_024756) Human Tagged ORF Clone
Tag:	Myc-DDK
Symbol:	Multimerin 2
Synonyms:	EMILIN-3; EMILIN3; ENDOGLYX-1
Mammalian Cell Selection:	Neomycin
Vector:	pCMV6-Entry (PS100001)
E. coli Selection:	Kanamycin (25 ug/mL)



[View online »](#)

ORF Nucleotide Sequence:

>RC210506 representing NM_024756
 Red=Cloning site Blue=ORF Green=Tags(s)

TTTTGTAATACGACTCACTATAGGGCGGCCGGGAATTCGTCGACTGGATCCGGTACCGAGGAGATCTGCC
 GCC**CGGATCGCC**

ATGATCCTGAGCTTGCTGTT**CAGCCTTGGGGGCCCTGGGCTGGGGCTGCTGGGGCATGGGCCCAGG**
CTTCCAGTACTAGCCTCTCTGATCTGCAGAGCTCCAGGACACCTGGGGTCTGGAAGGCAGAGGCTGAGGA
CACCGCAAGGACCCCGTTGGACGTAACTGGT**GCCCTACCCAATGTCCAAGCTGGTCACTTACTAGCT**
CTTTGCAAAACAGAGAAATTCCTCATCCACTCGCAGCAGCCGTGTCCGCAGGGAGCTCCAGACTGCCAGA
AAGTCAAAGTCATGTACCGCATGGCCACAAGCCAGTGTACCAGGTCAAGCAGAAGGTGCTGACCTTTT
GGCCTGGAGGTGCTGCCCTGGCTACACGGGCCCAACTGCGAGCACCACGATTCCATGGCAATCCCTGAG
CCTGCAGATCCTGGTACAGCCACCAGGAACCTCAGGATGGACCAGTCACTTCAAACCTGGCCACCTTG
CTGCAGTGATCAATGAGGTTGAGGTGCAACAGGAACAGCAGGAACATCTGCTGGGAGATCTCCAGATGA
TGTGCACCGGGTGGCAGACAGCCTGCCAGGCCGTGAAAGCCCTGCCTGGTAACCTCACAGCTGCAGTG
ATGGAAGCAAATCAAACAGGGCACGAGTTCCTGATAGATCCTTGGAGCAGGTGCTGCTACCCCACGTGG
ACACCTTCTACAAGTGCAATTCAGCCCATCTGGAGGAGCTTAAACAAAGCCTGCACAGCCTTACCCA
GGCCATAAGAAACCTGTCTTTGACGTGGAGGCCAACCCAGGCCATCTCCAGAGTCCAGGACAGTGCC
GTGGCCAGGGCTGACTTCCAGGAGCTTGGTGCCAAATTTGAGGCCAAGGTCCAGGAGAACACTCAGAGAG
TGGTCACTGCGACAGGACGTGGAGGACCGCTGCACGCCAGCACTTACCCTGCACCGCTCGATCTC
AGAGCTCCAAGCCGATGTGGACACCAATTTGAAGAGGCTGCACAAGGCTCAGGAGCCCCAGGGACCAAT
GGCAGTCTGGTGTGGCAACGCCTGGGGCTGGGGCAAGCCCTGAGCCGGACAGCCTGCAGGCCAGGCTGG
GCCAGTGCAGAGGAACCTCTCAGAGCTGCACATGACCACGGCCCGCAGGGAGGAGGATTCAGTACAC
CCTGGAGGACATGAGGGCCACCCTGACCCGGCACGTGGATGAGATCAAGGAACTGTACTCCGAATCGGAC
GAGACTTTCGATCAGATTAGCAAGGTGGAGCGCAGGTGGAGGAGCTGCAGGTGAACCACACGGCGCTCC
GTGAGCTGCGCGTGATCCTGATGGAGAAGTCTCTGATCATGGAGGAGAACAAGGAGGAGTGGAGCGCA
GCTCCTGGAGCTCAACCTCACGCTGCAGCACCTGCAGGGTGGCCATGCCGACCTCATCAAGTACGTGAAG
GACTGCAATTGCCAGAAGCTCTATTTAGACCTGGACGTCCCGGAGGGCCAGAGGGACCCACGCGTG
CCCTGGAGGAGACCCAGGTGAGCCTGGACGAGCGCGCAGCTGGACGGCTCCTCCCTGCAGGCCCTGCA
GAAACCGCTGGACCGGTGCTCGCTGGCCGTGGACGCGCACAAGCGGAGGGCGAGCGGGCGGGCGGCC
ACGTGCGGGCTCCGGAGCCAAGTGCAGGCGCTGGATGACGAGGTGGGCGCGCTGAAGCGCGCCGCGCCG
AGGCCCCACAGAGGTGCGCCAGCTGCACAGCGCCTTCGCCGCCCTGCTGGAGGACGCGCTGCGGCACGA
GGCGGTGCTGGCCGCGCTCTTCGGGGAGGAGGTGCTGGAGGAGATGTCTGAGCAGACGCCGGACCGCTG
CCCCTGAGCTACGAGCAGATCCGCGTGGCCCTGCAGGACGCCGCTAGCGGGCTGCAGGAGCAGGGCTCG
GCTGGGACGAGCTGGCCGCCGAGTGACGGCCCTGGAGCAGGCCCTCGGAGCCCCCGCGCCGGCAGAGCA
CCTGGAGCCCAGCCACGACGCGGGCCGCGAGGAGGCCGCCACCACCGCCTGGCCGGCTGGCGCGGGAG
CTCCAGAGCCTGAGCAACGACGTCAAGAATGTCGGGCGGTGCTGCGAGGCTGAGGCCGGGGCCGGGGCCG
CCTCCCTCAACGCCTCCCTTGACGGCCTCCACAACGCACTCTTCGCCACTCAGCGCAGCTTGGAGCAGCA
CCAGCGGCTCTCCACAGCCTCTTTGGAACTTCCAAGGGCTCATGGAAGCCAACGTCAAGCTGGACCTG
GGGAAGCTGCAGACCATGCTGAGCAGGAAGGGAAGAAGCAGCAGAAAGACCTGGAAGTCCCCGGAAGA
GGGACAAGAAGGAAGCGGAGCCTTTGGTGGACATACGGGTACAGGGCCTGTGCCAGGTGCCCTGGGCGC
GGCGCTCTGGGAGGAGGATCCCTGTGGCCTTCTATGCCAGTTTTTCAAGGGACGGCTGCCCTGCAG
ACAGTGAAGTTCAACACCACATAACATTGGCAGCAGTACTTCCCTGAACATGGCTACTTCCGAG
CCCCTGAGCGTGGTGTACCTGTTGCAAGTGGAGGTTGAATTTGGCCAGGGCCAGGCACCGGGCAGCT
GGTGTGGAGGTCACCATCGGACTCCAGTCTGTACCACTGGGCAGGGGAGTGAAGCACAGCAACGGTC
TTTGCCATGGCTGAGCTGCAGAAGGGTGAAGGATGAGTGGTTGAGTTAACCCAGGGATCAATAACAAAGA
GAAGCCTGCGGCACTGCATTTGGGGCTTCTGATGTTAAGACC

AGCGGACCGACGCGTACGCGCCGCTCGAGCAGAACTCATCTCAGAAGAGGATCTGGCAGCAAATGATATCC
TGGATTACAAGGATGACGACGATAAGGTTTAA

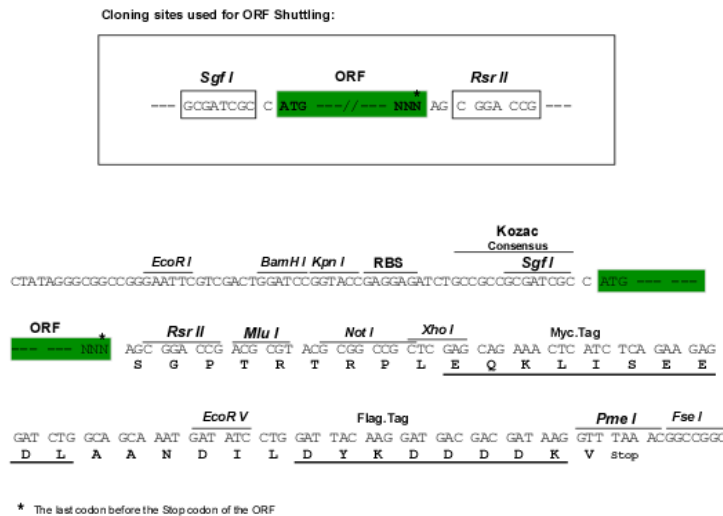
Protein Sequence: >RC210506 representing NM_024756
 Red=Cloning site Green=Tags(s)

MILSLLFSLGGPLGWLLGAWAQSSTSLSDLQSSRTPGVWKAEDTGKDPVGRNWCYPYMSKLVTLA
 LCKTEKFLIHSQQPCPQGAPDCQKVKVYRMAHKPVYQVKQVLTSLAWRCCPGYTGPNCEHDSMAIPE
 PADPGDSSHQEPQDGPVSKFPGHLAAVINEVEVQQEQEHLGLDQNDVHRVADSLPGLWKALPGNLTAAY
 MEANQTGHEFPDRSLEQVLLPHVDTFLLQVHFSPIWRSFNQSLHSLTQAIRNLSLDVEANRQAIISRVQDSA
 VARADFQELGAKFEAKVQENTQRVQGLRQDVEDRLHAQHFTLHRISISELQADVDTKLKRLHKAQEAPGTN
 GSLVLATPGAGARPEPDSLQARLGQLQRNLSELHMTTARREEELQYTLDMRATLTRHVDEIKELYSED
 ETFDQISKVERQVEELQVNHTALRELRVILMEKSLIMEENKEEVERQLLELNLTLQHLQGGHADLIKYYK
 DCNCQKLYLDLDVIREGQRDATRALEETQVSLDERRQLDGSSLQALQNAVDAVSLAVDAHKAEGERARAA
 TSRLRSQVQALDDEVGALKAAAAEARHEVRQLHSAFAALLEDALRHEAVLAALFGEEVLEEMSEQTPGPL
 PLSYEQIRVALQDAASGLQEALGWDELAARVTALEQASEPPRPAEHLEPSHDAGREEAATTALAGLARE
 LQSLSDNVKNGRCCEAEAGAGAASLNASLDGLHNALFATQRSLEQHQRLEFHSLEGNFQGLMEANVSLDL
 GKLQTMLSRKGGKQKQDLEAPRKRDKKEAEPLVDIRVTGPVPGALGAALWEAGSPVAFYASFSEGTAALQ
 TVKFNTTYINIGSSYFPEHGYFRAPERGVYLFVAVSVEFGPGPGTGQLVFGGHHRTPVCTTGQSGSTATV
 FAMAELQKGERVWFELTQGSITKRSLSGTAFGGFLMFKT

SGPTRRRL**E**QKL**I**SEED**L**AAND**I**LDYKDDDD**K**V

Restriction Sites: SgfI-RsrII

Cloning Scheme:

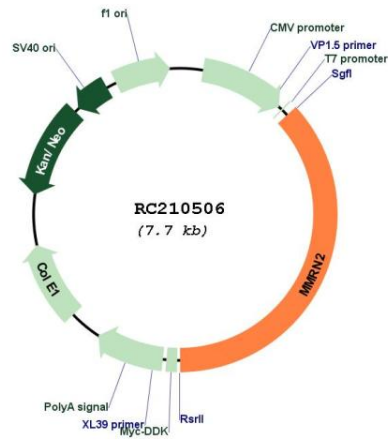


ACCN: NM_024756

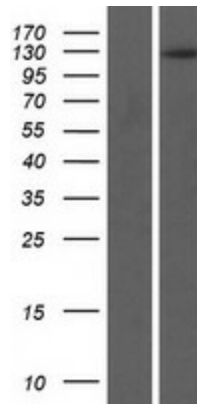
ORF Size: 2847 bp

OTI Disclaimer:	The molecular sequence of this clone aligns with the gene accession number as a point of reference only. However, individual transcript sequences of the same gene can differ through naturally occurring variations (e.g. polymorphisms), each with its own valid existence. This clone is substantially in agreement with the reference, but a complete review of all prevailing variants is recommended prior to use. More info
OTI Annotation:	This clone was engineered to express the complete ORF with an expression tag. Expression varies depending on the nature of the gene.
Components:	The ORF clone is ion-exchange column purified and shipped in a 2D barcoded Matrix tube containing 10ug of transfection-ready, dried plasmid DNA (reconstitute with 100 ul of water).
Reconstitution Method:	<ol style="list-style-type: none">1. Centrifuge at 5,000xg for 5min.2. Carefully open the tube and add 100ul of sterile water to dissolve the DNA.3. Close the tube and incubate for 10 minutes at room temperature.4. Briefly vortex the tube and then do a quick spin (less than 5000xg) to concentrate the liquid at the bottom.5. Store the suspended plasmid at -20°C. The DNA is stable for at least one year from date of shipping when stored at -20°C.
RefSeq:	NM_024756.3
RefSeq Size:	3828 bp
RefSeq ORF:	2850 bp
Locus ID:	79812
UniProt ID:	Q9H8L6
Cytogenetics:	10q23.2
Domains:	C1Q
Protein Families:	Secreted Protein
MW:	104.2 kDa
Gene Summary:	This gene encodes a protein belonging to the member of elastin microfibril interface-located (EMILIN) protein family. This family member is an extracellular matrix glycoprotein that can interfere with tumor angiogenesis and growth. It serves as a transforming growth factor beta antagonist and can interfere with the VEGF-A/VEGFR2 pathway. A related pseudogene has been identified on chromosome 6. [provided by RefSeq, Aug 2012]

Product images:



Circular map for RC210506



Western blot validation of overexpression lysate (Cat# [LY411086]) using anti-DDK antibody (Cat# [TA50011-100]). Left: Cell lysates from untransfected HEK293T cells; Right: Cell lysates from HEK293T cells transfected with RC210506 using transfection reagent MegaTran 2.0 (Cat# [TT210002]).