

Product datasheet for **RC210505**

UNC93B (UNC93B1) (NM_030930) Human Tagged ORF Clone

Product data:

Product Type:	Expression Plasmids
Product Name:	UNC93B (UNC93B1) (NM_030930) Human Tagged ORF Clone
Tag:	Myc-DDK
Symbol:	UNC93B
Synonyms:	IIAE1; Unc-93B1; UNC93; UNC93B
Mammalian Cell Selection:	Neomycin
Vector:	pCMV6-Entry (PS100001)
E. coli Selection:	Kanamycin (25 ug/mL)



[View online »](#)

ORF Nucleotide Sequence:

>RC210505 representing NM_030930
 Red=Cloning site Blue=ORF Green=Tags(s)

TTTTGTAATACGACTCACTATAGGGCGGCCGGAATTCGTCGACTGGATCCGGTACCGAGGAGATCTGCC
 GCC**CGGATCGCC**

ATGGAGGCGGAGCCGCCCTCTACCCGATGGCGGGGGCTGCGGGGCCGAGGGCGACGAGGACCTGCTCG
 GGGTCCCGGACGGGCCAGGCCCGCTGGACGAGCTGGTGGCGCGTACCCCAACTACAACGAGGAGGA
 GGAGGAGCGCCGCTACTACCGCCGCAAGCGCTGGGCGTGCTCAAGAACGTGCTGGCTGCCAGCGCCGGG
 GGCATGCTCACCTACGGCGTCTACCTGGGCTCCTGCAGATGCAGCTGATCCTGCACTACGACGAGACCT
 ACCGCGAGGTGAAGTATGGCAACATGGGCTGCCGACATCGACAGCAAATGCTGATGGGCATCAACGT
 GACTCCCATCGCCGCCCTGCTCTACACACCTGTGCTCATCAGTTTTTTTGGAAACGAAGTGGATGATGTT
 CTCGCTGTGGGCATCTACGCCCTTTTGTCTCCACCACTACTGGGAGCGCTACTACACGCTTGTGCCCT
 CGGCTGTGGCCCTGGGCATGGCCATCGTGCCTTTTGGGCTTCATGGGCAACTACATCACCAGGATGGC
 GCAGAAGTACCATGAGTACTCCCACTACAAGGAGCAGGATGGGCAGGGGATGAAGCAGCGGCCCTCCGCG
 GGCTCCACGCGCCCTATCTCCTGGTCTTCCAAGCCATCTTCTACAGCTTCTTCATCTGAGCTTCGCT
 GCGCCAGCTGCCATGATTTATTTCTGAACCACTACCTGTATGACCTGAACCACAGCTGTACATGT
 GCAGAGCTGCGGCACCAACAGCCACGGGATCCTCAGCGGCTTCAACAAGACGGTTCTGCGGACGCTCCCG
 CGGAGCGGAAACCTATTGTGGTGGAGAGCGTGCTCATGGCAGTGGCCTTCTGGCCATGCTGCTGGTGC
 TGGGTTTTGTGCGGAGCCGCTTACCGGCCACGGAGGAGATCGATCTGCGCAGCGTGGGCTGGGGCAACAT
 CTTCCAGCTGCCCTTCAAGCAGTGCCTGACTACCGCTGCGCCACCTCGTGCCTTTCTTATCTACAGC
 GGCTTCGAGGTGCTCTTGCCTGCATGGTATCGCCTTGGGCTATGGCGTGTGCTCGTGGGCTGGAGC
 GGCTGGCTTACCTCCTCGTGGCTTACAGCCTGGGCGCCTCAGCCGCTCACTCCTGGGCTGCTGGGCT
 GTGGCTGCCACGCGCCGTCGCCCTGGTGGCGGAGCAGGGGTGCACCTGCTGCTCACCTTCACTCCTTT
 TTCTGGGCCCCTGTGCCTCGGGTCTGCAACACAGCTGGATCCTCTATGTGGCAGCTGCCCTTTGGGGT
 TGGGAGTGCCTGAACAAGACTGGACTCAGCACACTCCTGGAACTTTGTACGAAGACAAGGAGAGACA
 GGACTTCACTTACCATCTACCACTGGTGGCAGGCTGTGGCCATCTTACCCTGTACCTGGGCTCGAGC
 CTGCACATGAAGGCTAAGCTGGCGGTGCTGCTGGTACGCTGGTGGCGCCGCGGTCTCTACCTGCGGA
 TGGAGCAGAAGCTGCGCCGGGCGTGGCCCGCCAGCCCGCATCCCGCGCCCGCAGCACAAGGTGCG
 CGTTACCGCTACTTGGAGGAGGACAACCTCGGACGAGAGCGACGCGGAGGGCGAGCATGGGACGCGCG
 GAGGAGGAGGCGCCCGCCGAGGCGCCAGGCTGGCCCGAGCCCGCTGGACTCGGCCCGCGCCCTGCC
 CGTACGAACAGGCGCAGGGGGAGACGGGCCGGAGGAGCAG

ACGCGTACGCGGCCGCTCGAGCAGAAACTCATCTCAGAAGAGGATCTGGCAGCAAATGATATCCTGGATT
 ACAAGGATGACGACGATAAGGTTTAA

Protein Sequence:

>RC210505 representing NM_030930
 Red=Cloning site Green=Tags(s)

MEAEPLYPMAGAAGPQGDDELLGVPDGPEAPLDELVGAYPNYNEEEERRRYRRKRLGVLKNVLAASAG
 GMLTYGVYLGLLQMLILHYDETYREVKYGNMGLPDIDSKMLMGINVTPIAALLYTPVLIRFFGKWMFM
 LAVGIYALFVSTNYWERYTLPVSAVALGMAIVPLWASMGNYITRMAQKYHEYSHYKEQDGGQMKQRPPR
 GSHAPYLLVFQAFYFSLFACAQLPMIYFLNHYLYDLNHTLYNVQSCGTNSHGILSGFNKTVLRLTP
 RSGNLI VVESVLMVAFLAMLLVLGLCGAAYRPTTEIDLRSVWGNIFQLPFKHVRDYRLRHLVPPFIYS
 GFEVLFACTGIALGYGVCVGLERLAYLLVAYSLGASAASLLGLLGLWLPVPLVAGAGVHLLLTFILF
 FWAPVPRVLQHSWILYVAAALWVGVSALNKTGLSTLLGILYEDKERQDFIFTIYHWWQAVAIFTVYLGSS
 LHMKAKLAVLLVTLVAAAVSYLRMEQKLRGVAAPRQPRIPRPQHKVRYRYLEEDNSDESDAEGEHGDGA
 EEEAPPAGPRPGPEPAGLGRRPCPYEQAQGGDGPEEQ

TRTRPLEQKLISEEDLAANDILDYKDDDDKV

Chromatograms:

https://cdn.origene.com/chromatograms/mg2819_h01.zip

Restriction Sites: SgfI-MluI

Cloning Scheme:



ACCN: NM_030930

ORF Size: 1791 bp

OTI Disclaimer: The molecular sequence of this clone aligns with the gene accession number as a point of reference only. However, individual transcript sequences of the same gene can differ through naturally occurring variations (e.g. polymorphisms), each with its own valid existence. This clone is substantially in agreement with the reference, but a complete review of all prevailing variants is recommended prior to use. [More info](#)

OTI Annotation: This clone was engineered to express the complete ORF with an expression tag. Expression varies depending on the nature of the gene.

Components: The ORF clone is ion-exchange column purified and shipped in a 2D barcoded Matrix tube containing 10ug of transfection-ready, dried plasmid DNA (reconstitute with 100 ul of water).

- Reconstitution Method:**
1. Centrifuge at 5,000xg for 5min.
 2. Carefully open the tube and add 100ul of sterile water to dissolve the DNA.
 3. Close the tube and incubate for 10 minutes at room temperature.
 4. Briefly vortex the tube and then do a quick spin (less than 5000xg) to concentrate the liquid at the bottom.
 5. Store the suspended plasmid at -20°C. The DNA is stable for at least one year from date of shipping when stored at -20°C.

Note: Plasmids are not sterile. For experiments where strict sterility is required, filtration with 0.22um filter is required.

RefSeq: [NM_030930.4](#)

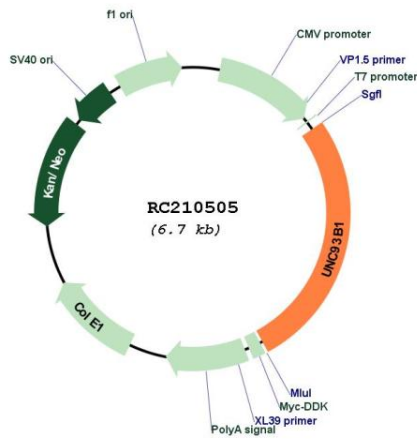
RefSeq Size: 2334 bp

RefSeq ORF: 1794 bp

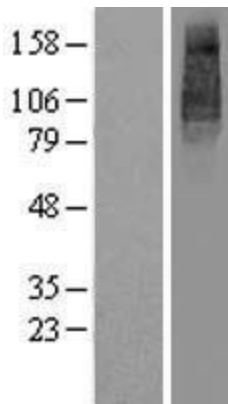
Locus ID: 81622
UniProt ID: [Q9H1C4](#)
Cytogenetics: 11q13.2
Protein Families: Transmembrane
MW: 66.5 kDa

Gene Summary: This gene encodes a protein that is involved in innate and adaptive immune response by regulating toll-like receptor signaling. The encoded protein traffics nucleotide sensing toll-like receptors to the endolysosome from the endoplasmic reticulum. Deficiency of the encoded protein has been associated with herpes simplex encephalitis. [provided by RefSeq, Feb 2014]

Product images:



Circular map for RC210505



Western blot validation of overexpression lysate (Cat# [LY410646]) using anti-DDK antibody (Cat# [TA50011-100]). Left: Cell lysates from untransfected HEK293T cells; Right: Cell lysates from HEK293T cells transfected with RC210505 using transfection reagent MegaTran 2.0 (Cat# [TT210002]).