

Product datasheet for RC210503

EBPL (NM_032565) Human Tagged ORF Clone

Product data:

Product Type: Expression Plasmids
Product Name: EBPL (NM_032565) Human Tagged ORF Clone
Tag: Myc-DDK
Symbol: EBPL
Synonyms: EBRP
Mammalian Cell Selection: Neomycin
Vector: pCMV6-Entry (PS100001)
E. coli Selection: Kanamycin (25 ug/mL)
ORF Nucleotide Sequence: >RC210503 ORF sequence
 Red=Cloning site Blue=ORF Green=Tags(s)

TTTTGTAATACGACTCACTATAGGGCGGCCGGAATTCGTCGACTGGATCCGGTACCGAGGAGATCTGCC
GCC**CGATCGCC**

ATGGGCGCTGAGTGGGAGCTGGGGCCGAGGCTGGCGTTTCGCTGCTGCTGTGCGCGGCGCTGCTGGCGG
CGGGCTGCGCCCTGGGCCTGCACCTGGGCCGCGGGCAGGGGGCGGCGGACCGGGGGCGCTCATCTGGCT
CTGCTACGACGCGCTGGTGCCTCGCGCTGGAAGGCCCTTTTGTCTACTTGTCTTTAGTAGGAAACGTT
GCAAATCCGATGGCTTGATTGCTTCTTTATGAAAGAATATGGCAAAGCTGATGCAAGATGGGTTTATT
TTGATCCAACCATTTGTGTCTGTGAAATCTGACCGTCGCCCTGGATGGGTCTCTGGCATTGTTCCCTCAT
TTATGCCATAGTCAAAGAAAAATATTACCGCATTTCCTGCAGATCACCTGTGCGTGTGCGAGCTGAT
GGCTGCTGGATGACCTTCTCCAGAGTGGCTCACCAGAAGCCCCAACCTCAACACCAGCAACTGGCTGT
ACTGTTGGCTTTACCTGTTTTTTTTAACGGTGTGTGGTTCTGATCCCAGGACTGCTACTGTGGCAGTC
ATGGCTAGAACTCAAGAAAATGCATCAGAAAGAAACCAGTTCAGTGAAGAAGTTTCAG

ACGCGTACGCGGCCGCTCGAGCAGAACTCATCTCAGAAGAGGATCTGGCAGCAAATGATATCCTGGATT
ACAAGGATGACGACGATAAGGTTTAA

Protein Sequence: >RC210503 protein sequence
 Red=Cloning site Green=Tags(s)

MGAEWELGAEAGGSLLLCAALLAAGCALGLHLGRGQAADRGAL IWL CYDALVHF ALEGPVYVLSLVGNV
ANSDGLIASLWKEYGKADARWVYFDPTIVSVEILTVALDGLALFLIYAI VKEKYRHLQITLCVCELY
GCWMTFLPEWL TRSPNLNTSNWLYCWL YLFFFNQVWVLI PGLLLWQSWLELKKMHQKETS SVKFKFQ

TRTRPLEQKLISEEDLAANDILDYKDDDDKV

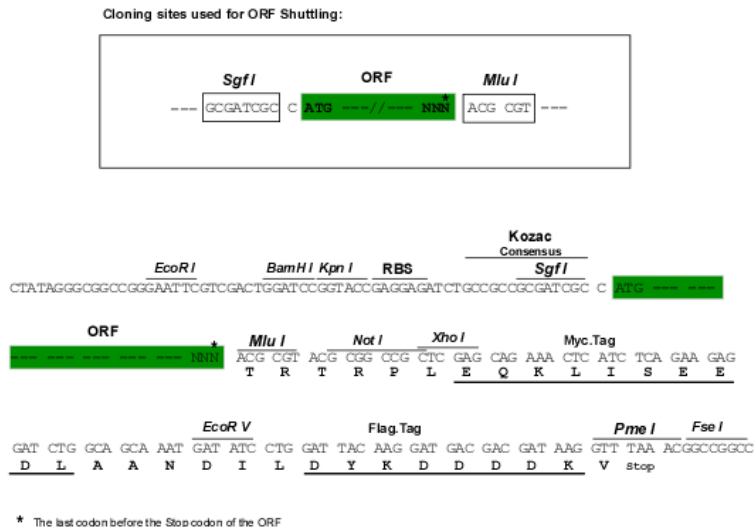


[View online »](#)

Chromatograms: https://cdn.origene.com/chromatograms/mk6380_c04.zip

Restriction Sites: SgfI-MluI

Cloning Scheme:



ACCN: NM_032565

ORF Size: 618 bp

OTI Disclaimer: The molecular sequence of this clone aligns with the gene accession number as a point of reference only. However, individual transcript sequences of the same gene can differ through naturally occurring variations (e.g. polymorphisms), each with its own valid existence. This clone is substantially in agreement with the reference, but a complete review of all prevailing variants is recommended prior to use. [More info](#)

OTI Annotation: This clone was engineered to express the complete ORF with an expression tag. Expression varies depending on the nature of the gene.

Components: The ORF clone is ion-exchange column purified and shipped in a 2D barcoded Matrix tube containing 10ug of transfection-ready, dried plasmid DNA (reconstitute with 100 ul of water).

Reconstitution Method:

1. Centrifuge at 5,000xg for 5min.
2. Carefully open the tube and add 100ul of sterile water to dissolve the DNA.
3. Close the tube and incubate for 10 minutes at room temperature.
4. Briefly vortex the tube and then do a quick spin (less than 5000xg) to concentrate the liquid at the bottom.
5. Store the suspended plasmid at -20°C. The DNA is stable for at least one year from date of shipping when stored at -20°C.

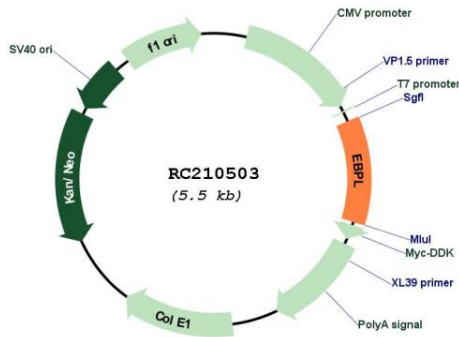
RefSeq: [NM_032565.5](#)

RefSeq Size: 976 bp

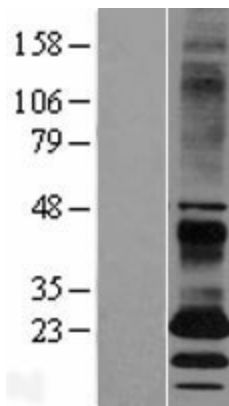
RefSeq ORF: 621 bp

Locus ID: 84650

UniProt ID: [Q9BY08](#)
Cytogenetics: 13q14.2
Protein Families: Transmembrane
MW: 23.2 kDa
Gene Summary: Does not possess sterol isomerase activity and does not bind sigma ligands. [UniProtKB/Swiss-Prot Function]

Product images:


Circular map for RC210503



Western blot validation of overexpression lysate (Cat# [LY410023]) using anti-DDK antibody (Cat# [TA50011-100]). Left: Cell lysates from untransfected HEK293T cells; Right: Cell lysates from HEK293T cells transfected with RC210503 using transfection reagent MegaTran 2.0 (Cat# [TT210002]).