

Product datasheet for **RC210500**

FBXO2 (NM_012168) Human Tagged ORF Clone

Product data:

Product Type: Expression Plasmids
Product Name: FBXO2 (NM_012168) Human Tagged ORF Clone
Tag: Myc-DDK
Symbol: FBXO2
Synonyms: FBG1; Fbs1; FBX2; NFB42; OCP1
Mammalian Cell Selection: Neomycin
Vector: pCMV6-Entry (PS100001)
E. coli Selection: Kanamycin (25 ug/mL)
ORF Nucleotide Sequence: >RC210500 ORF sequence
Red=Cloning site Blue=ORF Green=Tags(s)

TTTTGTAATACGACTCACTATAGGGCGGCCGGAATTCGTCGACTGGATCCGGTACCGAGGAGATCTGCC
GCC**CGATCGCC**

ATGGACGGAGACGGTGACCCAGAGAGCGTGGGCCAGCCGAGGAGGCAAGCCGGAGGAGCAGCCAGAGG
AGGCGAGTGCTGAGGAGGAGCGGCCGAGGACCAGCAGGAGGAGGAGGCGGCCGCGCCGCGTACCT
GGACGAGCTGCCGAGCCGCTGCTGCTGCGCGTGTGGCCGCACTGCCGGCCGCGAGCTGGTGCAGGCC
TGCCGCCCTGGTGTGCCTGCGCTGGAAGGAGCTGGTGGACGGCGCCCGCTGTGGCTGCTCAAGTCCAGC
AGGAGGGGCTGGTCCCGAGGGCGCGTGGAGGAGGAGCGGACCACTGGCAGCAGTTCTACTTCCTGAG
CAAGCGGCGCCGCAACCTTCTGCGTAACCCGTGTGGGGAAGAGGACTTGAAGGCTGGTGTGACGTGGAG
CATGGTGGGACGGCTGGAGGGTGGAGGAGCTGCCTGGAGACAGTGGGGTGGAGTTCACCCACGATGAGA
GCGTCAAGAAGTACTTCGCCTCCTCTTGTAGTGGTGTGCGAAAGCACAGGTCATTGACCTGCAGGCTGA
GGGCTACTGGGAGGAGCTGCTGGACAGCACTCAGCCGGCCATCGTGGTGAAGGACTGGTACTCGGGCCGC
AGCGACGCTGGTTCCTTACGAGCTCACCGTTAAGCTACTGTCCGAGCACGAGAACGTGCTGGCTGAGT
TCAGCAGCGGGCAGGTGGCAGTGCCCAAGACAGTGACGGCGGGGGCTGGATGGAGATCTCCACACCTT
CACCGACTACGGGCCGGGCGTCCGCTTCGTCCGCTTCGAGCACGGGGGGCAGGACTCCGTCTACTGGAAG
GGCTGGTTCGGGGCCCGGGTGACCAACAGCAGCGTGTGGGTAGAACC

**ACGCGTACGCGGCCGCTCGAGCAGAAACTCATCTCAGAAGAGGATCTGGCAGCAAATGATATCCTGGATT
ACAAGGATGACGACGATAAGGTTAA**



[View online »](#)

Protein Sequence: >RC210500 protein sequence
Red=Cloning site Green=Tags(s)

MDGDGDPESVGGQPEEASPEEQPEEASAEERPEDQQEEEEAAAAAYLDELPEPLLLRVLAALPAELVQA
 CRLVCLRWKELVDGAPLWLLKCQQEGLVPEGGVEEERDHWQQFYFLSKRRRNLLRNPCGEEDLEGWCDVE
 HGGDGRVVEELPGDSGVEFTHDESVKKYFASSFEWCRKAQVIDLQAEGYWEELDTTQPAIVVKDWYSGR
 SDAGCLYELTVKLLSEHENVLAEFSSGQVAVPQSDSGGGWMEISHTFTDYGPGVRFVRFEHGGQDSVYWK
 GWFGARVTNSSVWVEP

TRTRPLEQKLISEEDLAANDILDYKDDDDKV

Chromatograms: https://cdn.origene.com/chromatograms/mk6214_d04.zip

Restriction Sites: SgfI-MluI

Cloning Scheme:



ACCN: NM_012168

ORF Size: 888 bp

OTI Disclaimer: The molecular sequence of this clone aligns with the gene accession number as a point of reference only. However, individual transcript sequences of the same gene can differ through naturally occurring variations (e.g. polymorphisms), each with its own valid existence. This clone is substantially in agreement with the reference, but a complete review of all prevailing variants is recommended prior to use. [More info](#)

OTI Annotation: This clone was engineered to express the complete ORF with an expression tag. Expression varies depending on the nature of the gene.

Components: The ORF clone is ion-exchange column purified and shipped in a 2D barcoded Matrix tube containing 10ug of transfection-ready, dried plasmid DNA (reconstitute with 100 ul of water).

Reconstitution Method:

1. Centrifuge at 5,000xg for 5min.
2. Carefully open the tube and add 100ul of sterile water to dissolve the DNA.
3. Close the tube and incubate for 10 minutes at room temperature.
4. Briefly vortex the tube and then do a quick spin (less than 5000xg) to concentrate the liquid at the bottom.
5. Store the suspended plasmid at -20°C. The DNA is stable for at least one year from date of shipping when stored at -20°C.

Note: Plasmids are not sterile. For experiments where strict sterility is required, filtration with 0.22um filter is required.

RefSeq: [NM_012168.6](#)

RefSeq Size: 1724 bp

RefSeq ORF: 891 bp

Locus ID: 26232

UniProt ID: [Q9UK22](#)

Cytogenetics: 1p36.22

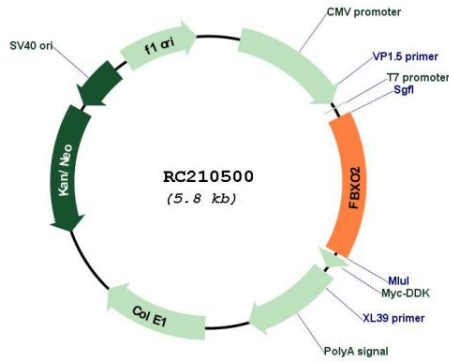
Domains: F-box, FBA

Protein Families: Druggable Genome

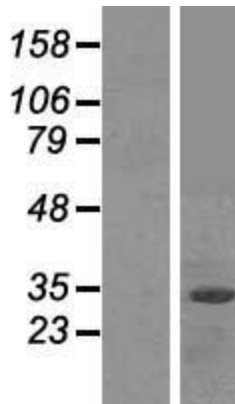
Protein Pathways: Ubiquitin mediated proteolysis

MW: 33.3 kDa

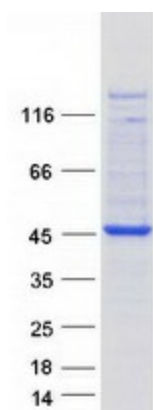
Gene Summary: This gene encodes a member of the F-box protein family which is characterized by an approximately 40 amino acid motif, the F-box. The F-box proteins constitute one of the four subunits of the ubiquitin protein ligase complex called SCFs (SKP1-cullin-F-box), which function in phosphorylation-dependent ubiquitination. The F-box proteins are divided into 3 classes: Fbws containing WD-40 domains, Fbls containing leucine-rich repeats, and Fbxs containing either different protein-protein interaction modules or no recognizable motifs. The protein encoded by this gene belongs to the Fbxs class. This protein is highly similar to the rat NFB42 (neural F Box 42 kDa) protein which is enriched in the nervous system and may play a role in maintaining neurons in a postmitotic state. [provided by RefSeq, Jul 2008]

Product images:


Circular map for RC210500



Western blot validation of overexpression lysate (Cat# [LY415946]) using anti-DDK antibody (Cat# [TA50011-100]). Left: Cell lysates from untransfected HEK293T cells; Right: Cell lysates from HEK293T cells transfected with RC210500 using transfection reagent MegaTran 2.0 (Cat# [TT210002]).



Coomassie blue staining of purified FBXO2 protein (Cat# [TP310500]). The protein was produced from HEK293T cells transfected with FBXO2 cDNA clone (Cat# RC210500) using MegaTran 2.0 (Cat# [TT210002]).