

Product datasheet for **RC210499**

VPS26B (NM_052875) Human Tagged ORF Clone

Product data:

Product Type: Expression Plasmids
Product Name: VPS26B (NM_052875) Human Tagged ORF Clone
Tag: Myc-DDK
Symbol: VPS26B
Synonyms: Pep8b
Mammalian Cell Selection: Neomycin
Vector: pCMV6-Entry (PS100001)
E. coli Selection: Kanamycin (25 ug/mL)
ORF Nucleotide Sequence: >RC210499 representing NM_052875
Red=Cloning site Blue=ORF Green=Tags(s)

TTTTGTAATACGACTCACTATAGGGCGGCCGGAATTCGTCGACTGGATCCGGTACCGAGGAGATCTGCC
GCC**CGATCGCC**

ATGAGTCTCTCGGCTTCGGGCAGAGCGTGGAGGTGAAATCCTTCTGAACGATGCAGAGAGTAGGAAGC
GGCCGAGCACAAGACGGAGGACGGGAAGAAGGAGAAATATTTCTCTTCTACGACGGGAGACGGTCTC
CGGAAGGTGAGCCTTGCCTCAGGAACCCCAACAAGCGGCTGGAGCACCAGGGCATCAAGATCGAGTTC
ATCGGCAGATCGAACTCTACTACGATCGCGGAACCACCATGAGTTTGTGTCCCTGGTGAAGGACCTGG
CCCGCCTGGAGAGATCACCCAGTCGCAGGCCTTCGACTTTGAGTTTACCCACGTGGAGAAGCCGTATGA
GTCTACACAGGGCAGAATGTGAAGCTACGCTATTTCTTCGTGCTACCATCAGCCCGCCTCAATGAT
GTTGTCAAAGAGATGGACATTGTAGTTCACACACTCAGCAGATACCCAGAGCTGAACTCTTCCATCAAGA
TGGAGGTTGGGATTGAGGACTGTCTGCACATTGAATTTGAGTACAATAAATCCAAATACCACTTGAAGA
TGTATTGTAGGGAAGATATACTTCCTGCTGGTGAGAAATCAAAATCAAGCACATGGAGATAGACATCATC
AAGCGAGAAACGACGGGTACAGGCCCAACGTGTACCATGAGAATGACACGATAGCCAAGTACGAGATCA
TGGACGGGCACCAAGTGCAGGAGAGTCCATCCCGATCCGGCTCTTCTGGCCGGTATGAGCTCACGCC
CACCATGCGGGACATCAACAAGAAGTTCTCTGTGCGCTATTACCTCAACCTGGTGTGATAGACGAGGAG
GAGCGGCGCTACTTCAAGCAGCAGGAAGTGGTGTGGCGGAAGGGTGACATCGTACGGAAGAGCATGT
CCACCAGGCGGCATCGCCTCACAGCGCTTTGAGGGCACCACTCCCTGGGTGAGGTGCCGACCCCCAG
CCAGCTGTCTGACAACACTGCAGGCAG

ACGCGTACGCGGCCGCTCGAGCAGAACTCATCTCAGAAGAGGATCTGGCAGCAATGATATCCTGGATT
ACAAGGATGACGACGATAAGGTTTAA



[View online »](#)

Protein Sequence: >RC210499 representing NM_052875
Red=Cloning site Green=Tags(s)

MSFFFGGQSVEVEILLNDAESRKRAEHKTEDGKKEKYFLFYDGETVSGKVSLALRNPKNRLEHQGKIEF
 IGQIELYYDRGNHHEFVSLVKDLARPGEITQSQAFDFEFTHVEKPYESYTGQNVKLRYLRAISRRLND
 VVKEMDIVVHTLSTYPELNSSIKMEVGIEDCLHIEFEYNKSKYHLKDVI VGKIYFLLVRIKIKHMEIDII
 KRETTGTGPNVYHENDTIAKYEIMDGAPVRGESIPIRLFLAGYELTPTMRDINKKF SVRYLNLVLIDEE
 ERRYFKQQEVVLWRKGDIVRKSMSHQAAIASQRFEGTSSLGEVRTPSQLSDNNCRQ

TRTRPLEQKLISEEDLAANDILDYKDDDDKV

Chromatograms: https://cdn.origene.com/chromatograms/mg3515_h07.zip

Restriction Sites: SgfI-MluI

Cloning Scheme:

Cloning sites used for ORF Shuttling:



* The last codon before the Stop codon of the ORF

ACCN: NM_052875

ORF Size: 1008 bp

OTI Disclaimer: The molecular sequence of this clone aligns with the gene accession number as a point of reference only. However, individual transcript sequences of the same gene can differ through naturally occurring variations (e.g. polymorphisms), each with its own valid existence. This clone is substantially in agreement with the reference, but a complete review of all prevailing variants is recommended prior to use. [More info](#)

OTI Annotation: This clone was engineered to express the complete ORF with an expression tag. Expression varies depending on the nature of the gene.

Components: The ORF clone is ion-exchange column purified and shipped in a 2D barcoded Matrix tube containing 10ug of transfection-ready, dried plasmid DNA (reconstitute with 100 ul of water).

Reconstitution Method:

1. Centrifuge at 5,000xg for 5min.
2. Carefully open the tube and add 100ul of sterile water to dissolve the DNA.
3. Close the tube and incubate for 10 minutes at room temperature.
4. Briefly vortex the tube and then do a quick spin (less than 5000xg) to concentrate the liquid at the bottom.
5. Store the suspended plasmid at -20°C. The DNA is stable for at least one year from date of shipping when stored at -20°C.

RefSeq: [NM_052875.5](#)

RefSeq Size: 3685 bp

RefSeq ORF: 1011 bp

Locus ID: 112936

UniProt ID: [Q4G0F5](#)

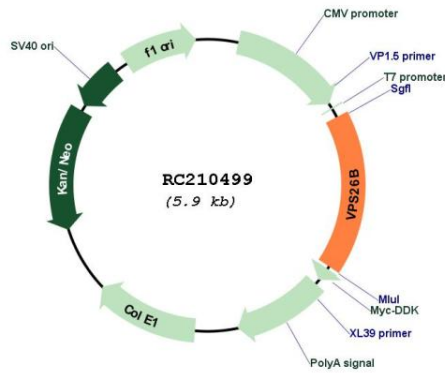
Cytogenetics: 11q25

Domains: Vps26

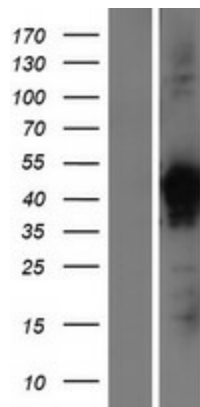
MW: 39 kDa

Gene Summary: Acts as component of the retromer cargo-selective complex (CSC). The CSC is believed to be the core functional component of retromer or respective retromer complex variants acting to prevent missorting of selected transmembrane cargo proteins into the lysosomal degradation pathway. The recruitment of the CSC to the endosomal membrane involves RAB7A and SNX3. The SNX-BAR retromer mediates retrograde transport of cargo proteins from endosomes to the trans-Golgi network (TGN) and is involved in endosome-to-plasma membrane transport for cargo protein recycling. The SNX3-retromer mediates the retrograde transport of WLS distinct from the SNX-BAR retromer pathway. The SNX27-retromer is believed to be involved in endosome-to-plasma membrane trafficking and recycling of a broad spectrum of cargo proteins. The CSC seems to act as recruitment hub for other proteins, such as the WASH complex and TBC1D5. May be involved in retrograde transport of SORT1 but not of IGF2R. Acts redundantly with VSP26A in SNX-27 mediated endocytic recycling of SLC2A1/GLUT1 (By similarity).[UniProtKB/Swiss-Prot Function]

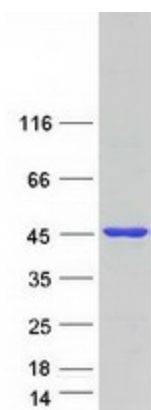
Product images:



Circular map for RC210499



Western blot validation of overexpression lysate (Cat# [LY409418]) using anti-DDK antibody (Cat# [TA50011-100]). Left: Cell lysates from untransfected HEK293T cells; Right: Cell lysates from HEK293T cells transfected with RC210499 using transfection reagent MegaTran 2.0 (Cat# [TT210002]).



Coomassie blue staining of purified VPS26B protein (Cat# [TP310499]). The protein was produced from HEK293T cells transfected with VPS26B cDNA clone (Cat# RC210499) using MegaTran 2.0 (Cat# [TT210002]).