

## Product datasheet for RC210498

### CTTNBP2 (NM\_033427) Human Tagged ORF Clone

#### Product data:

Product Type:	Expression Plasmids
Product Name:	CTTNBP2 (NM_033427) Human Tagged ORF Clone
Tag:	Myc-DDK
Symbol:	CTTNBP2
Synonyms:	C7orf8; CORTBP2; Orf4
Mammalian Cell Selection:	Neomycin
Vector:	pCMV6-Entry (PS100001)
E. coli Selection:	Kanamycin (25 ug/mL)
ORF Nucleotide Sequence:	>RC210498 representing NM_033427 Red=Cloning site Blue=ORF Green=Tags(s)

TTTTGTAATACGACTCACTATAGGGCGGCCGGGAATTCGTCGACTGGATCCGGTACCGAGGAGATCTGCC  
GCC**CGATCGCC**

ATGGCGACGGACGGCGGAGCTGCGAGCCGACTTGTCCCGGGCCCCGGAGGACGCGGGGGGCCCGG  
CGGAGGCGGGCAAAAAGAGTTTGATGTGGATACTCTCAGTAAATCCGAGCTGCGGATGCTCCTCAGCGT  
GATGGAAGGGGAGCTGGAGGCCAGAGACCTTGTTCATCGAGGCCCTGCGGGCTCGCAGGAAGGAGTATTT  
ATCCAGGAACGGTATGGGAGATTAATCTAAATGACCCGTTCTGGCACTCCAGAGAGACTATGAAGCAG  
GTGCTGGTGACAAAGAGAAGAAGCCAGTTGTACCAACCCCTCTCCATCCTTGAAGCAGTCATGGCCCA  
CTGCAAGAAAATGCAAGAAAGGATGTCCGCACAGCTGGCTGCTGCTGAGAGCAGACAAAAGAAGCTGGAA  
ATGGAGAAGCTTCAAGCTACAAGCCCTTGAAGCAAGCACAAGAAGCTGGCTGCCCGCCTTGAAGAAAGC  
GTGGCAAGAACAAGCAGGTGGTCTGATGCTGGTCAAAGAGTGCAAGCAGCTCTCAGGCAAAATCATAGA  
GGAGGCCCAGAAGCTCGAAGACGTAATGGCCAACTGGAAGAGGAAAAGAAAAGACGAATGAATTAGAA  
GAGGAAGCTCTCCGCTGAGAAAACGAAGAAGCACAGAAATGGAAGCTCAGATGGAAAAACAAGCTCTGAGT  
TTGACACTGAGCGGGAACAGCTTCGTGCCAAGCTGAACCGGGAAGAAGCACACACCACTGACCTCAAAGA  
GGAGATAGACAAGATGAGGAAAATGATTGAGCAACTGAAAAGGGGAAGTGACAGCAAACCAAGCCTCTCT  
CTTCCACGGAAGACAAAAGATAGGCGTTTGGTTTCCATATCTGTGGGAACAGAAGGAAGTGTGACAAGGT  
CTGTTGCATGCCAGACAGACCTAGTGACAGAAAATGCTGACCACATGAAAAGTTGCCTTTAACCATGCC  
TGTA AACCTTCCACAGGGAGTCCCTAGTTTCTGCAAATGCAAAGGGAGCGTGTGCACCAAGTGCACCC  
ATGGCCAGACCAGGTATTGACAGGCAGGCTTCTATGGTACTTGATTGGCGCTTCTGTACCCGCTTTCC  
CACCTCCAAGTGCAAACAAAATTGAGGAAAATGGACCAAGCACTGGCTCAACACCAGATCCAACCAAGTAG  
CACACCCCACTTCCAGTAACGCTGCCCTCCACCCGCTCAAACACCAGGCATAGCTCCTCAGAAGTCCG  
CAAGCTCCACCTATGCACAGTTTACATTACCATGTGCCAACACCTTTTGCATCCAGGTCTAAACCCAC  
GAATCCAAGCAGTAGATTTAGATTTAGGGAATGCTAACGACCCAGACCAAAATGAAATACTACCCA  
AAGTCTCCGTC AAGAGATGTCTCGCCTACAAGTCGTGACAACCTAGTGGCCAAACAAGTCTCGGAAT



[View online »](#)

ACTGTGACCCAAGCACTGTCAAGATTTACAAGCCCTCAAGCAGGTGCTCCCTCAAGGCCTGGAGTGCCCC  
CAACAGGGGATGTTGGCACCCACCCTCCAGTTGGTTCGGACCAGTTTAAAGACTCATGGTGTAGCAGGAGT  
TGACAGAGGAAATCCTCCTCCTATCCCTCCAAAAAGCCAGGGCTCTCCCAAACCTCTTCTCCACCACAC  
CCCCAACTCAAGTTATTATAGACAGCAGCAGGGCCTCGAACACAGGGGCCAAAGTTGATAACAAAACCTG  
TGGCTTCGACTCCTTCCAGTTTGCCACAAGGGAACAGGGTGATCAATGAGGAGAACCTTCTAAGTCATC  
CTCCCCCTCAGCTGCCACAAAACCATCCATAGATTTAACTGTGGCACCTGCAGGCTGTGCCGTTTCAGCC  
CTGGCCAGTCTCAGGTGGTGCCTGGCTGCTGCAACCCCGGACTGAACCAACCTGCATGTTTCAGACA  
GTTCCCTTGTCAATCCTACCACCATGGCTTTTGGCTCTTCCATAAACCCCGTTAGTGCTCATCCTGTAG  
ACCAGGTGCCTCAGACAGCCTCCTGGTAACAGCATCAGGCTGGTACCCTCCCTAACCCCTTTGCTAATG  
AGTGGTGGTCTGCCCCCTGGCTGGCAGGCCACCCTTCTTCAGCAAGCTGCTGCCAGGGAAATGTCA  
CTTTATTATCAATGCTGCTTAATGAAGAAGGACTGGACATTAATTACTCCTGTGAAGATGGCCATTCTGC  
CTTGATTTCTGCTGCTAAGAATGGACATACAGACTGTGTGAGATTGCTGCTGAGTGCAGAAGCCCAAGTC  
AATGCTGCTGATAAAAAATGGCTTACACCCTTGTGTGCTGCAGCTGCTCAGGGACATTCGAGTGTGTAG  
AATTATTAATTTTCATATGATGCTAACATTAATCATGCTGCTGATGGAGGACAGACACCTCTATACCTGGC  
CTGTA AAAATGGAATAAAGAATGTATTA AACTCTTGTGGAAGCTGGAACCAATCGAAGTGTAAAAACC  
ACAGATGGCTGGACACCAGTTTCAGCAGCTGTGGACACTGGAATGTGGACAGCCTCAAGCTTCTTATGT  
ACCATAGAATACCAGCTCATGGAATTTCTTCAATGAGGAGGAGTCCGAGTCAAGTGTCTTTGACTTGGA  
TGGAGGAGAAGAGAGTCTGAAGGCATATCCAAGCCTGTTGTTCCCTGCAGACCTCATTAACCACGCCAAC  
AGAGAAGGCTGGACTGCTGCCACATGCTGCTTCAAAGGTTTTAAGAACTGCCTAGAAATCTTGTTGA  
GGCACGGAGGGCTTGAGCCAGAAAGGAGAGACAAGTGAATCGGACTGTGCATGATGTTGCCACTGATGA  
CTGCAAGCATTGCTGGAGAATCTGAATGCTCTTAAAAACCCCTAAGGATTTTCAGTGGGTGAGATTGAA  
CCAAGCAACTATGGTTCTGATGACTTGGAAATGTGAAAACACAATATGTGCTTTAAATATCCGCAACAGA  
CATCATGGGATGATTTTTCAAAGCAGTGAGTCAAGCTTGACAAATCATTTCAGGCAACTCTCTCTGTA  
TGGATGGTGGAGTCTGGAAGACGTGACTTGAATAACACCCTGATTCCAACATCGGCCCTCAGTGC AAGA  
AGCATAACGATCCATCACGCTAGGAAATGTGCCGTGGTCAAGTGGTGCAGAGCTTCGCGCAGTCCCCGTGGG  
ACTTTATGAGGAAGAATAAGGCAGAGCACATCACTGTGCTTTTGTGAGGCTCTCAAGAAGGCTGTCTCAG  
TAGTGTGACTTATGCCTCCATGATCCCTCTCCAGATGATGCAGAACTACCTCAGGCTGGTTGAGCAATAT  
CATAATGTCAATTTCCACGGCCAGAAAGGCTTGAAGACTACATAGTACATCAGCTTGCCTCTGCC  
TGAAGCACAGACAAATGGCTGCAGGATTCTCCTGTGAAAATAGTGAGAGCTGAAGTAGATGCTGGTTTTTC  
CAAGGAACAGCTACTAGACCTGTTCAATAGTAGCGTTGTCTGATCCCAGTGAACAATCTCCCAGTAAG  
AAGAAAATCATCATCATTTTAGAAAATTTAGAAAATCTTCACTGTCCGAGTTATTGAGGGACTTTTTGG  
CACCTCTTGAAAATCGCAGCACTGAAAGCCCTGCACTTTCCAAAAAGGAAATGGACTGTCCGAATGTTA  
TTACTTTTCATGAGAACTGCTTTCTGATGGGAACCATCGCCAAGGCCTGTCTCCAGGGCTCCGACTTGCTG  
GTGCAGCAGCATTTCCGCTGGGTGCAGCTGCGGTGGATGGCGAGCCCATGCAAGGACTGCTGCAGAGGT  
TCTTACGAAGGAAAGTTGTGAATAAGTTCAAAGGTCAAGGCCTCCCTCCCTGCGATCCTGTGTGCAAGAT  
TGTGACTGGGCTCTGTCCGTCTGGCGTCAGCTTAACTCCTGCCTGGCCCGCTTGGGCACACCTGAAGCA  
CTTCTTGGACAAAATATTTCTGTCTTGTCTGTAGTTTCTGGGCATGCCCAAGTGACAGTGAAGTGA  
TGCTAAGCTGTGAATGGCGTCATCGCACCCAGAGTTCAAGAAGCAATATTGTCAAGAGCCTCTGTGAA  
AAGACAACCTGGCTTTGGGCAGACAACCTGCTAAAAGACACCCTAGCCAAGGACAGCAGGCTGTGGTCAA  
GCTGCTCAGCATCTTGCTAAATAAAGCTGACTGCATGGCTGTCCCTCCCGCAGAGCAGAGCTAGACC  
AGCATAACAGCTGATTTCAAAGGAGGAAGTTTCCCTTTATCCATAGTTTCCAGTTATAACACTTGTAAACA  
GAAGAAAGGAGAGAGTGGTGCCTGGAGAAAGGTGAACACCAGTCTCGCAGGAAGTCTGGCCGCTTCTCT  
TTACCCACCTGGAATAAGCCAGACCTAAGCACTGAAGGTATGAAAAATAAGACTATATCACAGCTGAATT  
GTAACAGGAATGCTTCTCTGTCAAACAAAAGTCTTTAGAGAATGATCTATCACTGACGTTGAATTTGGA  
TCAGAGACTCTCTGGGTTTCAGATGACGAAGCAGATCTTGTCAAGGAACCTCAGAGCATGTGCTCCAGC  
AAGTCTGAGTCTGATATCAGCAAGATTGCTGATTCAGGGATGATTTAAGGATGTTTGATAGTTCTGGAA  
ACAACCTGTACTTTTCAGCAACTATTAATAATCTGAGAATGCCAGTGTCAAAAAGGAGGTGAGTCTCT  
CAGCAGCCATCAAACACTGAATGCAGCAACAGTAAATCAAAGACTGAGTTGGGTGTTTCAAGAGTTAAA  
TCTTTTCTTCTGTTCTAGAAAGTAAAGTCAACCCAGTGTCCAGAACACCAAAAAGGAGCAGCAGCA  
GTAATACAAGGCAATAGAAATCAACAACACTCAAAGAAGTGAATTGGAACCTTACAAAAAATGAACA  
CTAGAAAAACCTAACAAA

ACGCGTACGCGGCCGCTCGAGCAGAAACTCATCTCAGAAGAGGATCTGGCAGCAAATGATATCCTGGATT  
ACAAGGATGACGACGATAAGGTTTAA

**Protein Sequence:**

>RC210498 representing NM\_033427  
Red=Cloning site Green=Tags(s)

MATDGASCEPDL SRAPEDAAGAAEA AKKEFDVDTL SKSEL RMLL SVMEGELEARDLVIEALRARRKEVF  
IQERYGRFNLNDPFLALQRDYEAGAGDKEKPVCTNPLSILEAVMAHCKKMQERMSAQLAAAESRQKLE  
MEKLQLQALEQEHHKLAARLEEEERGKNKQVVLMLVKECKQLSGKVIIEAQKLEDVMAKLEEEKKTNELE  
EELSAEKRRSTEMEAQMEKQLSEFDTEREQLRAKLNREEAHTTDLKEEIDKMRKMIEQLKRGSDSKP  
SLSLPRKTKDRRLVSI SVGTEGTVTRSVACQTDLV TENADHMKKLPLTMPVKPSTGSP LVSANAKGSVCT  
SATMARP GIDRQASYGDLIGASVPAFP PPSANKIEENG PSTGSDPT SPTPLPSNAAPTAQT PGIAPQNS  
QAPPMHSLHSPCANTSLHPGLNPRIQAARFRFQGNANDPDQNGNTTQSPSRDVSPTS RDNLVAKQLARN  
TVTQALSRFTSPQAGAPSRPGVPPTGDVGT HPPVGRTSLKTHGVARVDRGNPPP IPPKKPGLSQT P  
SPPHPQLKVIIDSSSRASNTGAKVDNKTVASTPSSLPQGNRVINEENLPKSSSPQLPPKPSIDLTVAPAGCAV  
SALATSQVGAWPAATPGLNQ PACSDSSLVIPTTIAFCSSINPVSASSCRPGASDSSLVTASGWSPSLT  
PLLMGGPAPLAGRPTLLQAAAQGNVTLLSMLLNEEGLDINYSCE DGHSA LYSAAKNGHTDCVRLLLSAE  
AQVNAADKNGFTPLCAAAAQGHFECVELLISYDANINHAADGGQTPLYLACKNGNKECIKLLLEAGTNR  
SVKTTDGWTPVHAAVD TGNVDSLKLLMYHRIPAHGNSFN EEESESSVFDLDGGEESPEGISKPVP  
PADLINHANREGWTA AHIAASKGFKNCLEILCRHGGL EPERRDKNRTVHDVATDDCKHLL ENLNAL  
KIPLRISVGEIEPSNYGSD DLECENTICALNIRKQTSWDDFSKAVSQALTNHFQAISSDGWWSLE  
DVT CNNTDSNIGLSARSIRSITLGNVPWSVGQSF AQSPWDFMRKNKA EHITVLLSGPQEGCLSSV  
TYASMIPLQMMQNYLR LVEQYHNVI FHGPEGSLQDYIVHQLALCLKHRQMAAGFSCEIVRAE  
VDAGFSKEQLLDLFISSACLIPVKQSPSKKKIIII ILENLEKSSLSELLRDFLAPLENRST  
ESPCTFQKGNGLSECYF HENCFLMGTIAKACLQGS DLLVQHFWRVQLRWDGEPMQGLLQR  
FLRRKVVNKFKGQAPSPCDPVCKIVDWALSVWRQLNSCLARLGTPEALLGPKYFLSCPVP  
GHAQVTVKWMSKLWNGVIAPRVQEAILSRASVKRQPGFGQTTAKRHPSQGGQAVVK  
AALSILLNKA V LHGCPLPRAELDQHTADFKGGSFPLSIVSSYNTCNKKKGESGAWRKVNT  
SPRRKSGRFSLPTWKNPDLSTEGMKNKTI SQLNCNRNASLSKQKSL ENDSLTLNLDQRLSLG  
SDDEADLVKELQSMCSSKSESDISKIADSRDDLRFDSSGNPNVLSATINNL RMPVSQKEV  
SPLSSHQTTECSNSKSKTELGVSRVK SFLPVP RSKVTQCSQNTKRSSSSSNTRQIEIN  
NNSKEVNWNLHKNEHLEKPNK

TRTRPLEQKLISEEDLAANDILDYKDDDDKV

**Chromatograms:**

[https://cdn.origene.com/chromatograms/mk8114\\_e06.zip](https://cdn.origene.com/chromatograms/mk8114_e06.zip)

**Restriction Sites:**

Sgfl-MluI

**Cloning Scheme:**


**ACCN:** NM\_033427

**ORF Size:** 4989 bp

**OTI Disclaimer:** Due to the inherent nature of this plasmid, standard methods to replicate additional amounts of DNA in E. coli are highly likely to result in mutations and/or rearrangements. Therefore, OriGene does not guarantee the capability to replicate this plasmid DNA. Additional amounts of DNA can be purchased from OriGene with batch-specific, full-sequence verification at a reduced cost. Please contact our customer care team at [custsupport@origene.com](mailto:custsupport@origene.com) or by calling 301.340.3188 option 3 for pricing and delivery.

The molecular sequence of this clone aligns with the gene accession number as a point of reference only. However, individual transcript sequences of the same gene can differ through naturally occurring variations (e.g. polymorphisms), each with its own valid existence. This clone is substantially in agreement with the reference, but a complete review of all prevailing variants is recommended prior to use. [More info](#)

**OTI Annotation:** This clone was engineered to express the complete ORF with an expression tag. Expression varies depending on the nature of the gene.

**Components:** The ORF clone is ion-exchange column purified and shipped in a 2D barcoded Matrix tube containing 10ug of transfection-ready, dried plasmid DNA (reconstitute with 100 ul of water).

- Reconstitution Method:**
1. Centrifuge at 5,000xg for 5min.
  2. Carefully open the tube and add 100ul of sterile water to dissolve the DNA.
  3. Close the tube and incubate for 10 minutes at room temperature.
  4. Briefly vortex the tube and then do a quick spin (less than 5000xg) to concentrate the liquid at the bottom.
  5. Store the suspended plasmid at -20°C. The DNA is stable for at least one year from date of shipping when stored at -20°C.

RefSeq: [NM\\_033427.3](#)

RefSeq Size: 5980 bp

RefSeq ORF: 4992 bp

Locus ID: 83992

UniProt ID: [Q8WZ74](#)

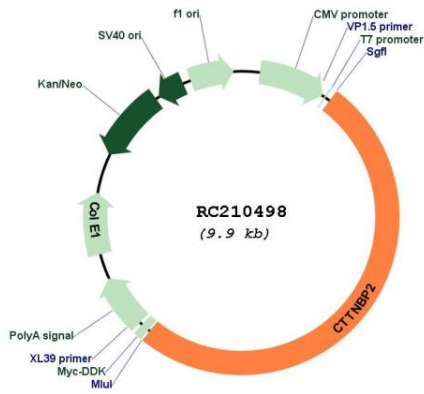
Cytogenetics: 7q31.31

Domains: ANK

MW: 180.9 kDa

**Gene Summary:** This gene encodes a protein with six ankyrin repeats and several proline-rich regions. A similar gene in rat interacts with a central regulator of the actin cytoskeleton. [provided by RefSeq, Jul 2008]

**Product images:**



Circular map for RC210498