

## Product datasheet for RC210496

### CGRP (CALCB) (NM\_000728) Human Tagged ORF Clone

#### Product data:

**Product Type:** Expression Plasmids  
**Product Name:** CGRP (CALCB) (NM\_000728) Human Tagged ORF Clone  
**Tag:** Myc-DDK  
**Symbol:** CGRP  
**Synonyms:** CALC2; CGRP-II; CGRP2  
**Mammalian Cell Selection:** Neomycin  
**Vector:** pCMV6-Entry (PS100001)  
**E. coli Selection:** Kanamycin (25 ug/mL)  
**ORF Nucleotide Sequence:** >RC210496 ORF sequence  
 Red=Cloning site Blue=ORF Green=Tags(s)

TTTTGTAATACGACTCACTATAGGGCGCCGGGAATTCGTCGACTGGATCCGGTACCGAGGAGATCTGCC  
GCC**CGATCGCC**

ATGGGTTTCCGGAAGTTCTCCCCTTCTGGCTCTCAGTATCTTGGTCTGTACCAGGCGGGCAGCCTCC  
AGGCGGCCCATTCAGGCTGCCCTGGAGAGCAGCCAGACCCGGCCACACTCAGTAAAGAGGACGCGCG  
CCTCTGTGGCTGCACTGGTGCAGGACTATGTGCAGATGAAGGCCAGTGAGCTGAAGCAGGAGCAGGAG  
ACACAGGGCTCCAGCTCCGCTGCCAGAAGAGAGCCTGCAACACTGCCACCTGTGTGACTCATCGGCTGG  
CAGGCTTGCTGAGCAGATCAGGGGGCATGGTGAAGAGCAACTTCGTGCCACCAATGTGGTTCCAAAGC  
CTTTGGCAGGCGCCGAGGGACCTCAAGCC

**ACGCGT**ACGCGGCCGCTCGAGCAGAAACTCATCTCAGAAGAGGATCTGGCAGCAAATGATATCCTGGATT  
ACAAGGATGACGACGATAAGGTTTAA

**Protein Sequence:** >RC210496 protein sequence  
 Red=Cloning site Green=Tags(s)  
 MGFRKFSPLAL SILVLYQAGSLQAAPFRSALESSDPATLSKEDARLLAALVQDYVQMKASELKQEQE  
 TQSSSAAQKRACNTATCVTHRLAGLLSRSGMVKSNFVPTNVGSKAFGRRRRDLQA

**TR**TRPLEQKLISEEDLAANDILDYKDDDDKV

**Chromatograms:** [https://cdn.origene.com/chromatograms/mk6380\\_d07.zip](https://cdn.origene.com/chromatograms/mk6380_d07.zip)

**Restriction Sites:** SgfI-MluI



[View online »](#)

**Cloning Scheme:**


**ACCN:** NM\_000728

**ORF Size:** 381 bp

**OTI Disclaimer:** The molecular sequence of this clone aligns with the gene accession number as a point of reference only. However, individual transcript sequences of the same gene can differ through naturally occurring variations (e.g. polymorphisms), each with its own valid existence. This clone is substantially in agreement with the reference, but a complete review of all prevailing variants is recommended prior to use. [More info](#)

**OTI Annotation:** This clone was engineered to express the complete ORF with an expression tag. Expression varies depending on the nature of the gene.

**Components:** The ORF clone is ion-exchange column purified and shipped in a 2D barcoded Matrix tube containing 10ug of transfection-ready, dried plasmid DNA (reconstitute with 100 ul of water).

- Reconstitution Method:**
1. Centrifuge at 5,000xg for 5min.
  2. Carefully open the tube and add 100ul of sterile water to dissolve the DNA.
  3. Close the tube and incubate for 10 minutes at room temperature.
  4. Briefly vortex the tube and then do a quick spin (less than 5000xg) to concentrate the liquid at the bottom.
  5. Store the suspended plasmid at -20°C. The DNA is stable for at least one year from date of shipping when stored at -20°C.

**RefSeq:** [NM\\_000728.4](#)

**RefSeq Size:** 1031 bp

**RefSeq ORF:** 384 bp

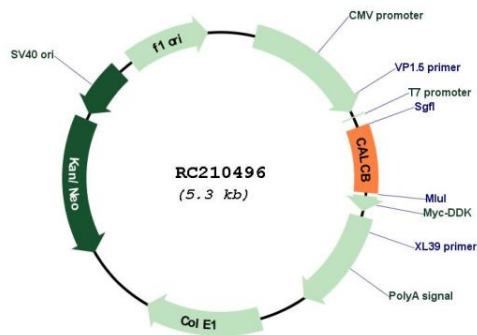
**Locus ID:** 797

**UniProt ID:** [P10092](#)

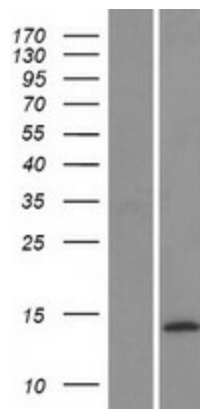
**Cytogenetics:** 11p15.2  
**Protein Families:** Druggable Genome, Secreted Protein  
**MW:** 13.7 kDa

**Gene Summary:** CGRP induces vasodilation. It dilates a variety of vessels including the coronary, cerebral and systemic vasculature. Its abundance in the CNS also points toward a neurotransmitter or neuromodulator role.[UniProtKB/Swiss-Prot Function]

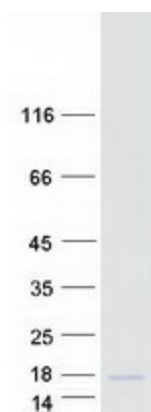
**Product images:**



Circular map for RC210496



Western blot validation of overexpression lysate (Cat# [LY424540]) using anti-DDK antibody (Cat# [TA50011-100]). Left: Cell lysates from untransfected HEK293T cells; Right: Cell lysates from HEK293T cells transfected with RC210496 using transfection reagent MegaTran 2.0 (Cat# [TT210002]).



Coomassie blue staining of purified CALCB protein (Cat# [TP310496]). The protein was produced from HEK293T cells transfected with CALCB cDNA clone (Cat# RC210496) using MegaTran 2.0 (Cat# [TT210002]).