

Product datasheet for **RC210490**

ARL13B (NM_144996) Human Tagged ORF Clone

Product data:

Product Type:	Expression Plasmids
Product Name:	ARL13B (NM_144996) Human Tagged ORF Clone
Tag:	Myc-DDK
Symbol:	ARL13B
Synonyms:	ARL2L1; JBTS8
Mammalian Cell Selection:	Neomycin
Vector:	pCMV6-Entry (PS100001)
E. coli Selection:	Kanamycin (25 ug/mL)
ORF Nucleotide Sequence:	>RC210490 ORF sequence Red=Cloning site Blue=ORF Green=Tags(s)

TTTTGTAATACGACTCACTATAGGGCGGCCGGAATTCGTCGACTGGATCCGGTACCGAGGAGATCTGCC
GCC**CGGATCGCC**

ATGTTTCAGTCTGATGGCCAGTTGCTGCGGCTGGTTCAAGCGGTGGCGGGAGCCTGTCAGGTTGGCAAATA
AACAAAGATAAAGAAGGAGCTTTAGGAGAAGCTGATGTCATTGAATGTCTATCTCTGGAAAAATTGGTCAA
TGAGCACAAAGTGCCTGTGTCAGATAGAACCATGTTTCAGCAATCTCGGGGTATGGAAAGAAAATTGACAAG
TCCATTAAGGAGCCTTTATTGGCTGCTACATGTTATTGCAAGAGACTTTGATGCCTTAAATGAACGCA
TCCAAAAAGAGACAACAGAGCAGCGTGCTCTTGAGGAACAAGAGAAACAAGAAAGAGCTGAACGAGTGCG
AAAATTACGAGAAGAAAGAAAACAAAATGAACAGGAGCAGGCTGAACTCGATGGAACCAAGTGGTCTGGCT
GAGTTGGACCCAGAACCAACGAATCCTTTCCAGCCAATAGCATCTGTAATCATTGAGAATGAAGGAAAAC
TTGAAAGAGAGAAAAAACCAAAAATGGAGAAAGACAGTGTGGCTGCCACCTGAAACATAAAATGGA
GCATGAGCAAAATAGAGACACAAGGCCAGGTTAATCACAATGGCCAAAAAATAATGAATTTGGACTAGTA
GAAAATTATAAGGAGGCATTAACACAGCAGTTAAAGAATGAAGATGAGACAGACCGGCCATCATTGGAAT
CAGCTAATGGTAAAAAGAAAACTAAGAACTAAGAATGAAAGGAACACCGGGTAGAACCACTTAATAT
AGATGACTGTGCTCCTGAGAGTCCAACGCCACCCCAACCCCTCCTCCTGTTGGCTGGGGAACCCCTAAA
GTCACTAGACTTCCAAAACCTTGAGCCTCTTGGTAAACACATCATAATGATTTCTATAGGAAGCCACTGC
CTCCCTGGCTGTGCCACAGCGACCTAACAGTGATGCTCATGATGTGATCTCA

ACGCGTACGCGGCCGCTCGAGCAGAAACTCATCTCAGAAGAGGATCTGGCAGCAATGATATCCTGGATT
ACAAGGATGACGACGATAAGGTTTAA



[View online »](#)

Protein Sequence: >RC210490 protein sequence
Red=Cloning site Green=Tags(s)

MFSLMASCWGFKRWREPVRLANKQDKEGALGEADVIECLSLEKLVNEHKCLCQIEPCSAISGYGKKIDK
 SIKKGLYLLHVIARDFDALNERIQKETTEQRAL EEQEKQERAERVRLREERKQNEQEQAELDGTSGLA
 ELDPEPTNPFQPIASV I IENEGKLEREKKNQKMEKSDSGCHLKHKMEHEQIETQGQVNHNGQKNNEFGLV
 ENYKEALTQQLKNEDETRPSLESANGKKTKKLRMKRNHRVEPLNIDDCAPESPTPPPPPPVVGWGP
 VTRLPKLEPLGETHHNDFYRKPLPLAVPQRPNSDAHDVIS

TRTRPLEQKLISEEDLAANDILDYKDDDDKV

Chromatograms: https://cdn.origene.com/chromatograms/mk6380_g12.zip

Restriction Sites: SgfI-MluI

Cloning Scheme:



ACCN: NM_144996

ORF Size: 963 bp

OTI Disclaimer: The molecular sequence of this clone aligns with the gene accession number as a point of reference only. However, individual transcript sequences of the same gene can differ through naturally occurring variations (e.g. polymorphisms), each with its own valid existence. This clone is substantially in agreement with the reference, but a complete review of all prevailing variants is recommended prior to use. [More info](#)

OTI Annotation: This clone was engineered to express the complete ORF with an expression tag. Expression varies depending on the nature of the gene.

Components: The ORF clone is ion-exchange column purified and shipped in a 2D barcoded Matrix tube containing 10ug of transfection-ready, dried plasmid DNA (reconstitute with 100 ul of water).

Reconstitution Method:

1. Centrifuge at 5,000xg for 5min.
2. Carefully open the tube and add 100ul of sterile water to dissolve the DNA.
3. Close the tube and incubate for 10 minutes at room temperature.
4. Briefly vortex the tube and then do a quick spin (less than 5000xg) to concentrate the liquid at the bottom.
5. Store the suspended plasmid at -20°C. The DNA is stable for at least one year from date of shipping when stored at -20°C.

RefSeq: [NM_144996.4](#)

RefSeq Size: 3670 bp

RefSeq ORF: 966 bp

Locus ID: 200894

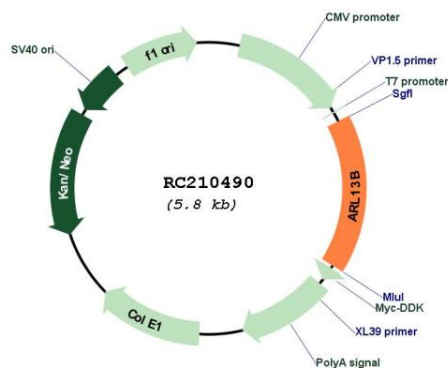
UniProt ID: [Q3SXY8](#)

Cytogenetics: 3q11.1-q11.2

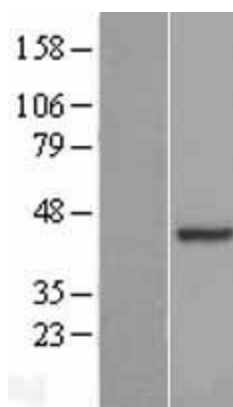
MW: 36.8 kDa

Gene Summary: This gene encodes a member of the ADP-ribosylation factor-like family. The encoded protein is a small GTPase that contains both N-terminal and C-terminal guanine nucleotide-binding motifs. This protein is localized in the cilia and plays a role in cilia formation and in maintenance of cilia. Mutations in this gene are the cause of Joubert syndrome 8. Alternate splicing results in multiple transcript variants. [provided by RefSeq, Mar 2010]

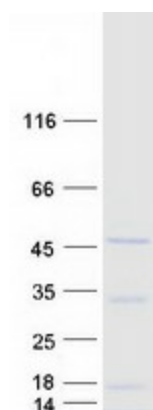
Product images:



Circular map for RC210490



Western blot validation of overexpression lysate (Cat# [LY408134]) using anti-DDK antibody (Cat# [TA50011-100]). Left: Cell lysates from untransfected HEK293T cells; Right: Cell lysates from HEK293T cells transfected with RC210490 using transfection reagent MegaTran 2.0 (Cat# [TT210002]).



Coomassie blue staining of purified ARL13B protein (Cat# [TP310490]). The protein was produced from HEK293T cells transfected with ARL13B cDNA clone (Cat# RC210490) using MegaTran 2.0 (Cat# [TT210002]).