

## Product datasheet for **RC210486**

### PSMD1 (NM\_002807) Human Tagged ORF Clone

#### Product data:

Product Type:	Expression Plasmids
Product Name:	PSMD1 (NM_002807) Human Tagged ORF Clone
Tag:	Myc-DDK
Symbol:	PSMD1
Synonyms:	P112; Rpn2; S1
Mammalian Cell Selection:	Neomycin
Vector:	pCMV6-Entry (PS100001)
E. coli Selection:	Kanamycin (25 ug/mL)



[View online »](#)

ORF Nucleotide  
Sequence:

>RC210486 ORF sequence  
Red=Cloning site Blue=ORF Green=Tags(s)

TTTTGTAATACGACTCACTATAGGGCGGCCGGAATTCGTGACTGGATCCGGTACCGAGGAGATCTGCC  
GCC**CGCATCGCC**

ATGATCACCTCGGCCGCTGGAATTATTTCTCTTCTGGATGAAGATGAACACAGCTTAAGGAATTTGCAC  
TACACAAATTGAATGCAGTTGTTAATGACTTCTGGGCAGAAATTTCCGAGTCCGTAGACAAAATAGAGGT  
TTTATACGAAGATGAAGTTTCCGGAGTCGGCAGTTTGCAGCCTTAGTGGCATCTAAAGTATTTTATCAC  
CTGGGGCTTTTGGAGTCTCTGAATTATGCTCTTGGAGCAGGGGACCTTCAATGTCAATGATAACT  
CTGAATATGTGGAACTATTATAGCAAAATGCATTGATCACTACACAAACAATGTGTGGAAAATGCAGA  
TTTGCCTGAAGGAGAAAAAACCAATTGACCAGAGATTGGAAGGCATCGTAAATAAAATGTTCCAGCGA  
TGTCTAGATGATACAAGTATAAACAGGCTATTGGCATTGCTCTGGAGACACGAAGACTGGACGCTTTT  
AAAAGACCATACTGGAGTCGAATGATGTCCAGGAATGTTAGCTTATAGCCTTAAGCTCTGCATGTCTTT  
AATGCAGAATAAACAGTTTCGGAATAAAGTACTAAGAGTTCTAGTTAAAACTACATGAACTTGGAGAAA  
CCTGATTTTCATCAATGTTTGTGAGTGTAAATTTCTTAGATGATCCTCAGGCTGTGAGTGATATCTTAG  
AGAACTGGTAAAGGAAGACAACCTCCTGATGGCATATCAGATTTGTTTTGATTTGTATGAAAGTGTAG  
CCAGCAGTTTTTGTATCTGTAATCCAGAATCTTCAACTGTTGGCACCCCTATTGCTTCTGTGCCTGGA  
TCCACTAATACGGTACTGTTCCGGGATCAGAGAAAGACAGTGACTCGATGGAACAGAAAGAAAAGACAA  
GCAGTGCATTTGTAGGAAAGACACCAGAAGCCAGTCCAGAGCCTAAGGACCAGACTTTGAAAATGATTAA  
AATTTTAAAGTGGTAAATGGCTATTGAGTTACATCTGCAGTTCTTAATACGAAACAATAACAGACCTC  
ATGATTTAAAAACACAAGGATGCAGTACGGAATTTCTGTATGCATACTGCAACCGTTATAGCAAAT  
CTTTTATGCAGTGTGGGACAACCAGTACCAGTTTCTTAGAGATAATTTGGAATGGTTAGCCAGAGCCAC  
TAACTGGGCAAAAATTTACTGCTACAGCCAGTTTGGGTGTAATTCATAAGGGTCATGAAAAAGAACATTA  
CAGTTAATGGCAACATACCTTCCCAAGGATACTTCTCCAGGATCAGCCTATCAGGAAGGTGGAGGTCTCT  
ATGCACTAGTCTTATTCATGCCAATCATGGTGGTGATATAATTGACTATCTGCTTAATCAGCTTAAGAA  
CGCCAGCAATGATATCGTTAGACACGGTGGCAGTCTGGGCCTTGGTTTGGCAGCCATGGAACTGCACGT  
CAAGATGTTTATGATTTGCTAAAAACAACCTTTATCAGGATGATGCAGTAACAGGGGAAGCAGCTGGCC  
TGGCCCTAGGTTTGGTTATGTTGGGCTCTAAAAATGCTCAGGCTATTGAGGACATGGTTGGTTATGCACA  
AGAACTCAACATGAGAAGATTCTGCGTGGTCTTGCAGTTGGCATAGCTTATAGTAATGTATGGGAGGATG  
GAAGAGGCTGATGCTCTCATTGAATCTCTGTGCTGACAAGGACCAATCTTTCGAAGGTCTGGAATGT  
ATACTGTAGCCATGGCTTATTGTGGCTCTGGTAACAACAAGCAATTCGACGCCTGCTACATGTTGCTGT  
AAGTGATGTTAATGATGATGTCAGGAGGGCAGCAGTAGAATCACTTGGGTTCACTTATTGAGAACCCT  
GAACAGTGCCCAAGTGTGTCTTTGTTGTGACAGAGTTACAACCCTCATGTGCCTACGGAGCTGCAA  
TGGCCTTGGGGATATGCTGTGCTGGTACAGGAAACAAGGAAGCCATTAATTTGCTAGAACCAATGACAAA  
CGACCCGTGAACACTCGTGAGGCAAGGGGCACTCATAGCTTCAGCTCTCATGATCCAGCAGACTGAA  
ATCACTTGTCAAAGGTGAATCAGTTCAGACAGCTGTATTCAAAGTCATCAATGATAAGCATGATGATG  
TCATGGCCAAGTTTGGCGCTATTCTGGCCAGGGCATACTGGATGCAGGTGGTCAATATGCACAATCTC  
CTTGCACTCCAGGACTGGGCATACTCATATGCCCTTCTGTGGTTGGCGTCCTTGTATTTACCCAGTTTGG  
TTCTGGTTTCTCTTTCACACTTCTGTGATTGGCTTATACCCCTACCTGTGTCATTGGCCTTAACAAGG  
ACTTAAAGATGCCGAAAGTTCAGTATAAAATCGAACTGTAACCATCCACATTTGCATATCTGCCCTCT  
GGAAGTACAAAAGAAAAGAAAAGAAAAGTTTCTACTGCTGTATTATCTATAACTGCCAAGGCTAAA  
AAGAAGGAAAAGAAAAGAAAAGAAAAGGAGGAGAAAATGGAAGTGGATGAGGAGAGAAAAGGAGG  
AAAAGAGAAGAAAAGAACCTGAGCCAACTCCAGTTATTGGATAACCCAGCCCGAGTTATGCCTGC  
CCAGCTTAAGGTCTAACCATGCCGAGACCTGTAGATACCAGCCTTCAAACCACTCTCTATTGGAGGC  
ATCATCTTCTGAAGGATACCAGTGAAGACATTGAGGAGCTGGTGAACCTGTGGCAGCACATGGCCAA  
AAATCGAGGAGGAGGAACAAGAGCCAGAACCCCAAGAACATTTGAGTATATTGATGAT

**ACGCGT**ACGCGGCCGCTCGAGCAGAACTCATCTCAGAAGAGGATCTGGCAGCAAATGATATCCTGGATT  
ACAAGGATGACGACGATAAGGTTTAA

Protein Sequence: >RC210486 protein sequence  
 Red=Cloning site Green=Tags(s)

```

    MITSAGIISLLDEDEPQLKEFALHKLNAVVNDFAEISESVDKIEVL YEDEGFRSRQFAALVASKV FYH
    LGAFEEESLNYALGAGDLFNVNDNSEYVETIIAKCIDHYTKQCVENADLPEGEKPIDQRLEGIVNKMFOR
    CLDDHKYKQAIGIALETRRLDVFEKTILESNDVPGMLAYSLKLCMSLMQNKQFRNKVLRVLVKIYMNLEK
    PDFINVCQCLIFLDDPQAVSDILEKLVKEDNLLMAYQICFDLYESASQQFLSSVIQNLRTVGTPIASVPG
    STNTGTVPGEKSDSMETEETSSAFVGTPEASPEPKDQTLKMIKILSGEMAIELHLQFLIRNNNTDL
    MILKNTKDAVRNSVCHTATVIANSFMHC GTTSDQFLRDNLEWLARATNWKFTATASLGVIHKGHEKEAL
    QLMATYLPKDTSPGSAYQEGGLYALGLIHANHGDIIDYLLNQLKNASNDIVRHGGSGLGLAAMGTAR
    QDVYDLLKTNLYQDDAVTGEAAGLALGLVMLGSKNAQAIEDMVGYAQETQHEKILRGLAVGIALVMYGRM
    EEADALIESLCRDKDPILRRSGMYTVAMAYCGSGNKAIRRLHVAVSDVNDVRRAAVESLGFILFRTP
    EQCPSVSVLLSESYNPHVRYGAAMALGICCAGTGNKEAINLLEPMTNDPVNYVRQGALIASALIMIQQTE
    ITCPKVNQFRQLYSKVINDKHDDVMAKFGAILAQGILDAGGHVNTISLQSRGTGHTHMP SVVGVLVFTQFW
    FWFPLSHFLSLAYTPTCVIGLNKDLKMPKVQYKSNCKPSTFAYPAPLEVPKEKEKEKVSTAVLSITAKAK
    KKEKEKEKEKEEKEVDEAEKKEKEKKEPEPNFQLLDNPARVMPAQLKVLTMPETCRYQPFKPLSIGG
    I IILKDTSEIEELVEPVAAHGPKIEEEEQEPEPEPEFYIDD
    
```

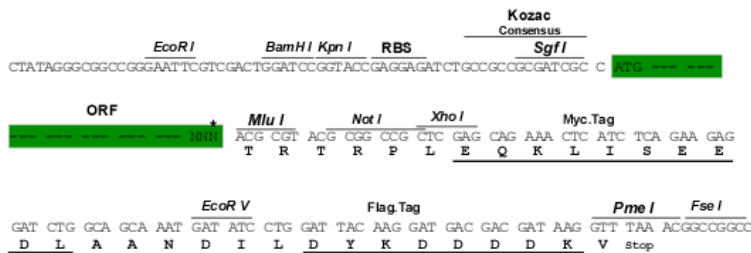
TRTRPLEQKLISEEDLAANDILDYKDDDDKV

Chromatograms: [https://cdn.origene.com/chromatograms/mk6155\\_h06.zip](https://cdn.origene.com/chromatograms/mk6155_h06.zip)

Restriction Sites: SgfI-MluI

Cloning Scheme:

Cloning sites used for ORF Shuttling:



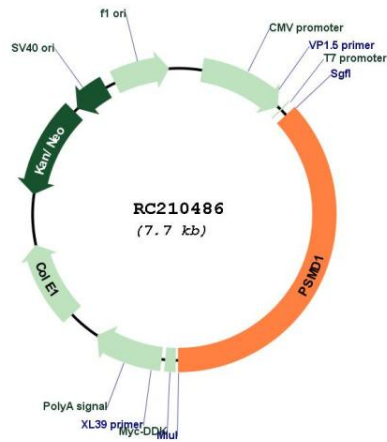
\* The last codon before the Stop codon of the ORF

ACCN: NM\_002807

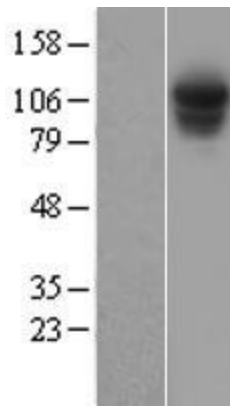
ORF Size: 2859 bp

<b>OTI Disclaimer:</b>	The molecular sequence of this clone aligns with the gene accession number as a point of reference only. However, individual transcript sequences of the same gene can differ through naturally occurring variations (e.g. polymorphisms), each with its own valid existence. This clone is substantially in agreement with the reference, but a complete review of all prevailing variants is recommended prior to use. <a href="#">More info</a>
<b>OTI Annotation:</b>	This clone was engineered to express the complete ORF with an expression tag. Expression varies depending on the nature of the gene.
<b>Components:</b>	The ORF clone is ion-exchange column purified and shipped in a 2D barcoded Matrix tube containing 10ug of transfection-ready, dried plasmid DNA (reconstitute with 100 ul of water).
<b>Reconstitution Method:</b>	<ol style="list-style-type: none"> <li>1. Centrifuge at 5,000xg for 5min.</li> <li>2. Carefully open the tube and add 100ul of sterile water to dissolve the DNA.</li> <li>3. Close the tube and incubate for 10 minutes at room temperature.</li> <li>4. Briefly vortex the tube and then do a quick spin (less than 5000xg) to concentrate the liquid at the bottom.</li> <li>5. Store the suspended plasmid at -20°C. The DNA is stable for at least one year from date of shipping when stored at -20°C.</li> </ol>
<b>RefSeq:</b>	<a href="#">NM_002807.4</a>
<b>RefSeq Size:</b>	3329 bp
<b>RefSeq ORF:</b>	2862 bp
<b>Locus ID:</b>	5707
<b>UniProt ID:</b>	<a href="#">Q99460</a>
<b>Cytogenetics:</b>	2q37.1
<b>Domains:</b>	PC_rep
<b>Protein Pathways:</b>	Proteasome
<b>MW:</b>	105.8 kDa
<b>Gene Summary:</b>	<p>The 26S proteasome is a multicatalytic proteinase complex with a highly ordered structure composed of 2 complexes, a 20S core and a 19S regulator. The 20S core is composed of 4 rings of 28 non-identical subunits; 2 rings are composed of 7 alpha subunits and 2 rings are composed of 7 beta subunits. The 19S regulator is composed of a base, which contains 6 ATPase subunits and 2 non-ATPase subunits, and a lid, which contains up to 10 non-ATPase subunits. Proteasomes are distributed throughout eukaryotic cells at a high concentration and cleave peptides in an ATP/ubiquitin-dependent process in a non-lysosomal pathway. An essential function of a modified proteasome, the immunoproteasome, is the processing of class I MHC peptides. This gene encodes the largest non-ATPase subunit of the 19S regulator lid, which is responsible for substrate recognition and binding. There is evidence that this proteasome and its subunits interact with viral proteins, including those of coronaviruses. Alternatively spliced transcript variants have been found for this gene.[provided by RefSeq, Aug 2020]</p>

Product images:



Circular map for RC210486



Western blot validation of overexpression lysate (Cat# [LY400995]) using anti-DDK antibody (Cat# [TA50011-100]). Left: Cell lysates from untransfected HEK293T cells; Right: Cell lysates from HEK293T cells transfected with RC210486 using transfection reagent MegaTran 2.0 (Cat# [TT210002]).