

Product datasheet for RC210482

NDUFA4 (NM_002489) Human Tagged ORF Clone

Product data:

Product Type:	Expression Plasmids
Product Name:	NDUFA4 (NM_002489) Human Tagged ORF Clone
Tag:	Myc-DDK
Symbol:	NDUFA4
Synonyms:	CI-9k; CI-MLRQ; COXFA4; MC4DN21; MISTR1; MLRQ; MRCAF1
Mammalian Cell Selection:	Neomycin
Vector:	pCMV6-Entry (PS100001)
E. coli Selection:	Kanamycin (25 ug/mL)
ORF Nucleotide Sequence:	<p>>RC210482 ORF sequence Red=Cloning site Blue=ORF Green=Tags(s)</p> <p>TTTTGTAATACGACTCACTATAGGGCGGCCGGAATTCGTCGACTGGATCCGGTACCGAGGAGATCTGCCGCCCGATCGCC</p> <p>ATGCTCCGCCAGATCATCGGTCAGGCCAAGAAGCATCCGAGCTTGATCCCCCTTTGTATTTATTGGAACTGGAGCTACTGGAGCAACTGTATCTTTCGCTCTGGCATTGTTCAATCCAGATGTTTGTGGGACAGAAATAACCCAGAGCCCTGGAACAACTGGGTCCCAATGATCAATACAAGTTCTACTCAGTGAATGTGGATTACAGCAAGCTGAAGAAGGAACGTCCAGATTTTC</p> <p>ACGCGTACGCGGCCGCTCGAGCAGAAACTCATCTCAGAAGAGGATCTGGCAGCAAATGATATCCTGGATTACAAGGATGACGACGATAAGGTTTAA</p>
Protein Sequence:	<p>>RC210482 protein sequence Red=Cloning site Green=Tags(s)</p> <p>MLRQIIGQAKKHPSLIPLFVFIGTGATGATLYLLRLALFNPDVCWDRNNPEPWNKLGPNQYKFYSVNVDYSKLLKERPDF</p> <p>TRTRPLEQKLISEEDLAANDILDYKDDDDKV</p>
Chromatograms:	https://cdn.origene.com/chromatograms/mk6071_a02.zip
Restriction Sites:	Sgfl-Mlul



View online »

Cloning Scheme:


ACCN: NM_002489

ORF Size: 243 bp

OTI Disclaimer: The molecular sequence of this clone aligns with the gene accession number as a point of reference only. However, individual transcript sequences of the same gene can differ through naturally occurring variations (e.g. polymorphisms), each with its own valid existence. This clone is substantially in agreement with the reference, but a complete review of all prevailing variants is recommended prior to use. [More info](#)

OTI Annotation: This clone was engineered to express the complete ORF with an expression tag. Expression varies depending on the nature of the gene.

Components: The ORF clone is ion-exchange column purified and shipped in a 2D barcoded Matrix tube containing 10ug of transfection-ready, dried plasmid DNA (reconstitute with 100 ul of water).

Reconstitution Method:

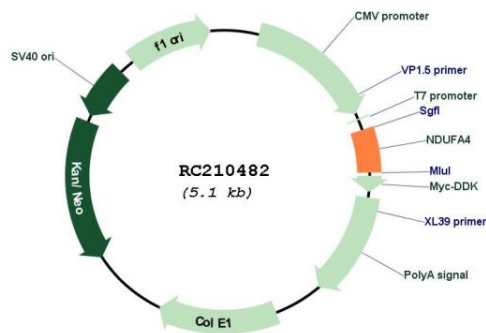
1. Centrifuge at 5,000xg for 5min.
2. Carefully open the tube and add 100ul of sterile water to dissolve the DNA.
3. Close the tube and incubate for 10 minutes at room temperature.
4. Briefly vortex the tube and then do a quick spin (less than 5000xg) to concentrate the liquid at the bottom.
5. Store the suspended plasmid at -20°C. The DNA is stable for at least one year from date of shipping when stored at -20°C.

Note: Plasmids are not sterile. For experiments where strict sterility is required, filtration with 0.22um filter is required.

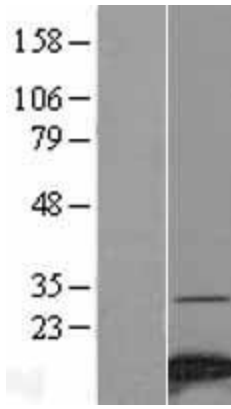
RefSeq: [NM_002489.4](#)

RefSeq Size: 2058 bp

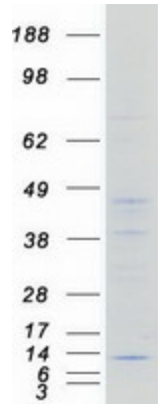
RefSeq ORF:	246 bp
Locus ID:	4697
UniProt ID:	<u>O00483</u>
Cytogenetics:	7p21.3
Protein Families:	Transmembrane
Protein Pathways:	Alzheimer's disease, Huntington's disease, Metabolic pathways, Oxidative phosphorylation, Parkinson's disease
MW:	9.4 kDa
Gene Summary:	The protein encoded by this gene belongs to the complex I 9kDa subunit family. Mammalian complex I of mitochondrial respiratory chain is composed of 45 different subunits. This protein has NADH dehydrogenase activity and oxidoreductase activity. It transfers electrons from NADH to the respiratory chain. The immediate electron acceptor for the enzyme is believed to be ubiquinone. [provided by RefSeq, Jul 2008]

Product images:


Circular map for RC210482



Western blot validation of overexpression lysate (Cat# [LY400888]) using anti-DDK antibody (Cat# [TA50011-100]). Left: Cell lysates from untransfected HEK293T cells; Right: Cell lysates from HEK293T cells transfected with RC210482 using transfection reagent MegaTran 2.0 (Cat# [TT210002]).



Coomassie blue staining of purified NDUFA4 protein (Cat# [TP310482]). The protein was produced from HEK293T cells transfected with NDUFA4 cDNA clone (Cat# RC210482) using MegaTran 2.0 (Cat# [TT210002]).