

Product datasheet for **RC210481**

Macrophage Inflammatory Protein 1 beta (CCL4) (NM_002984) Human Tagged ORF Clone

Product data:

Product Type:	Expression Plasmids
Product Name:	Macrophage Inflammatory Protein 1 beta (CCL4) (NM_002984) Human Tagged ORF Clone
Tag:	Myc-DDK
Symbol:	Macrophage Inflammatory Protein 1 beta
Synonyms:	ACT2; AT744.1; G-26; HC21; LAG-1; LAG1; MIP-1-beta; MIP1B; MIP1B1; SCYA2; SCYA4
Mammalian Cell Selection:	Neomycin
Vector:	pCMV6-Entry (PS100001)
E. coli Selection:	Kanamycin (25 ug/mL)
ORF Nucleotide Sequence:	>RC210481 ORF sequence Red=Cloning site Blue=ORF Green=Tags(s) TTTTGTAATACGACTCACTATAGGGCGGCCGGAATTCGTCGACTGGATCCGGTACCGAGGAGATCTGCCGCC CGGATCGCC ATGAAGCTCTGCGTGACTGTCCTGTCTCTCCTCATGCTAGTAGCTGCCTTCTGCTCTCCAGCGCTCTCAGCACCAATGGGCTCAGACCCTCCCACCGCTGCTGCTTTTCTTACACCGCGAGGAAGCTTCTCGCAACTTGTGGTAGATTACTATGAGACCAGCAGCCTCTGCTCCAGCCAGCTGTGGTATTCCAACCAAAAGAAGCAAGCAAGTCTGTGCTGATCCAGTGAATCCTGGGTCCAGGAGTACGTGTATGACCTGGAAGTGAAC ACGCGT ACGCGGCCGCTCGAGCAGAAACTCATCTCAGAAGAGGATCTGGCAGCAAATGATATCCTGGATTACAAGGATGACGACGATAAGGTTTAA >RC210481 protein sequence Red=Cloning site Green=Tags(s) MKLCVTVLSLLMLVA AFCSPALSAPMGSDPPTACCF SYTARKLPRNFVVDYYETSSLCSQPAVVFQTKRSKQVCADPSESQWQYVYDLELN TRTRPLEQKLI SEEDLAANDILDYKDDDDKV
Chromatograms:	https://cdn.origene.com/chromatograms/mk6071_a09.zip
Restriction Sites:	Sgfl-MluI



[View online »](#)

Cloning Scheme:



ACCN: NM_002984

ORF Size: 276 bp

OTI Disclaimer: The molecular sequence of this clone aligns with the gene accession number as a point of reference only. However, individual transcript sequences of the same gene can differ through naturally occurring variations (e.g. polymorphisms), each with its own valid existence. This clone is substantially in agreement with the reference, but a complete review of all prevailing variants is recommended prior to use. [More info](#)

OTI Annotation: This clone was engineered to express the complete ORF with an expression tag. Expression varies depending on the nature of the gene.

Components: The ORF clone is ion-exchange column purified and shipped in a 2D barcoded Matrix tube containing 10ug of transfection-ready, dried plasmid DNA (reconstitute with 100 ul of water).

- Reconstitution Method:**
1. Centrifuge at 5,000xg for 5min.
 2. Carefully open the tube and add 100ul of sterile water to dissolve the DNA.
 3. Close the tube and incubate for 10 minutes at room temperature.
 4. Briefly vortex the tube and then do a quick spin (less than 5000xg) to concentrate the liquid at the bottom.
 5. Store the suspended plasmid at -20°C. The DNA is stable for at least one year from date of shipping when stored at -20°C.

RefSeq: [NM_002984.4](#)

RefSeq Size: 667 bp

RefSeq ORF: 279 bp

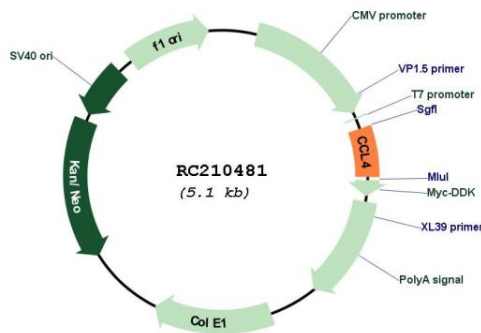
Locus ID: 6351

UniProt ID: [P13236](#)
 Cytogenetics: 17q12
 Domains: IL8
 Protein Families: Druggable Genome, Secreted Protein, Transmembrane
 Protein Pathways: Chemokine signaling pathway, Cytokine-cytokine receptor interaction, Cytosolic DNA-sensing pathway, Toll-like receptor signaling pathway

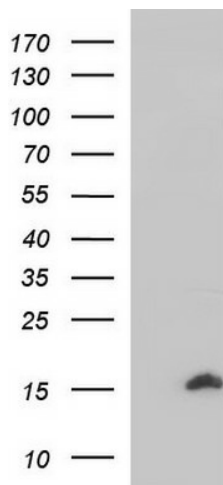
MW: 10.2 kDa

Gene Summary: The protein encoded by this gene is a mitogen-inducible monokine and is one of the major HIV-suppressive factors produced by CD8+ T-cells. The encoded protein is secreted and has chemokinetic and inflammatory functions. [provided by RefSeq, Dec 2012]

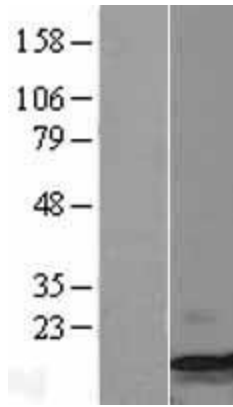
Product images:



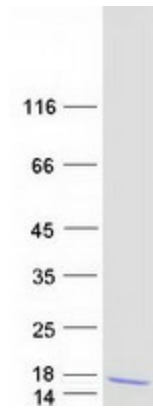
Circular map for RC210481



HEK293T cells were transfected with the pCMV6-ENTRY control (Cat# [PS100001], Left lane) or pCMV6-ENTRY CCL4 (Cat# RC210481, Right lane) cDNA for 48 hrs and lysed. Equivalent amounts of cell lysates (5 ug per lane) were separated by SDS-PAGE and immunoblotted with anti-CCL4 (Cat# [TA590147]). Positive lysates [LY401043] (100ug) and [LC401043] (20ug) can be purchased separately from OriGene.



Western blot validation of overexpression lysate (Cat# [LY401043]) using anti-DDK antibody (Cat# [TA50011-100]). Left: Cell lysates from untransfected HEK293T cells; Right: Cell lysates from HEK293T cells transfected with RC210481 using transfection reagent MegaTran 2.0 (Cat# [TT210002]).



Coomassie blue staining of purified CCL4 protein (Cat# [TP310481]). The protein was produced from HEK293T cells transfected with CCL4 cDNA clone (Cat# RC210481) using MegaTran 2.0 (Cat# [TT210002]).