

Product datasheet for RC210480

CAPZB (NM_004930) Human Tagged ORF Clone

Product data:

Product Type:	Expression Plasmids
Product Name:	CAPZB (NM_004930) Human Tagged ORF Clone
Tag:	Myc-DDK
Symbol:	CAPZB
Synonyms:	CAPB; CAPPB; CAPZ
Mammalian Cell Selection:	Neomycin
Vector:	pCMV6-Entry (PS100001)
E. coli Selection:	Kanamycin (25 ug/mL)
ORF Nucleotide Sequence:	>RC210480 representing NM_004930 Red=Cloning site Blue=ORF Green=Tags(s)

TTTTGTAATACGACTCACTATAGGGCGCCGGGAATTCGTCGACTGGATCCGGTACCGAGGAGATCTGCC
GCC**CGATCGCC**

ATGAGTGATCAGCAGCTGGACTGTGCCTTGGACCTAATGAGGCGCCTGCCTCCCCAGCAAATCGAGAAAA
ACCTCAGCGACCTGATCGACCTGGTCCCCAGTCTATGTGAGGATCTCCTGTCTTCTGTTGACCAGCCACT
GAAAATTGCCAGAGACAAGGTGGTGGGAAAGGATTACCTTTTGTGTGACTACAACAGAGATGGGGACTCC
TATAGGTCACCATGGAGTAACAAGTATGACCCTCCCTTGGAGGATGGGGCCATGCCGTGAGCTCGGCTGA
GAAAGCTGGAGGTGGAAGCCAACAATGCCTTTGACCAGTATCGAGACCTGTATTTGAAGGTGGCGTCTC
ATCTGTCTACCTCTGGGATCTGGATCATGGCTTTGCTGGAGTGATCCTCATAAAGAAGGCTGGAGATGGA
TCAAAGAAGATCAAAGGCTGCTGGGATTCCATCCACGTGGTAGAAGTGCAGGAGAAAATCCAGCGGTCGCA
CCGCCATTACAAGTTGACCTCCACGGTGATGCTGTGGCTGCAGACCAACAAATCTGGCTCTGGCACCAT
GAACCTCGGAGGCAGCCTTACCAGACAGATGGAGAAGGATGAAACTGTGAGTGACTGCTCCCCACACATA
GCCAACATCGGGCGCCTGGTAGAGGACATGAAAATAAAATCAGAAGTACGCTGAACGAGATCTACTTTG
GAAAAACAAGGATATCGTCAATGGGCTGAGGTCTGTGCAGACTTTTGCAGACAAATCAAAAACAAGAAGC
TCTGAAGAATGACCTGGTGGAGGCTTTGAAGAGAAAAGCAGCAATGC

ACGCGTACGCGGCCGCTCGAGCAGAAACTCATCTCAGAAGAGGATCTGGCAGCAAATGATATCCTGGATT
ACAAGGATGACGACGATAAGGTTTAA



[View online »](#)

Protein Sequence: >RC210480 representing NM_004930

Red=Cloning site Green=Tags(s)

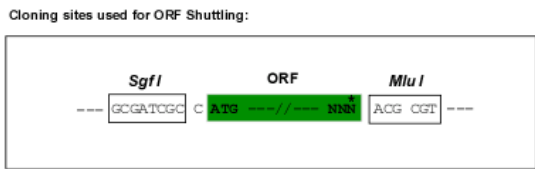
```
MSDQQLDCALDLRRLPPQQIEKNLSIDL VPSLCEDLLSSVDQPLKIARDKVVGKDYLLCDYNRDGDS
YRSPWSNKYDPPLEDGAMP SARLRKLEVEANNAFDQYRDL YFEGGVSSVYLWDLDHGFAVILIKKAGDG
SKKIKGCWDSIHVVEVQE KSSGRTAHYKLTSTVMLWLQTNKSGSGTMNLGGSLTRQMEKDETVSDCSPHI
ANIGRLVEDMENKIRSTLNEIYFGKTKDIVNGLRSVQTFADKSKQEALKNDLVEALKRKQQC
```

TRTRPLEQKLISEEDLAANDILDYKDDDDKV

Chromatograms: https://cdn.origene.com/chromatograms/mg3115_e08.zip

Restriction Sites: SgfI-MluI

Cloning Scheme:



* The last codon before the Stop codon of the ORF

ACCN: NM_004930

ORF Size: 816 bp

OTI Disclaimer: The molecular sequence of this clone aligns with the gene accession number as a point of reference only. However, individual transcript sequences of the same gene can differ through naturally occurring variations (e.g. polymorphisms), each with its own valid existence. This clone is substantially in agreement with the reference, but a complete review of all prevailing variants is recommended prior to use. [More info](#)

OTI Annotation: This clone was engineered to express the complete ORF with an expression tag. Expression varies depending on the nature of the gene.

Components: The ORF clone is ion-exchange column purified and shipped in a 2D barcoded Matrix tube containing 10ug of transfection-ready, dried plasmid DNA (reconstitute with 100 ul of water).

Reconstitution Method:

1. Centrifuge at 5,000xg for 5min.
2. Carefully open the tube and add 100ul of sterile water to dissolve the DNA.
3. Close the tube and incubate for 10 minutes at room temperature.
4. Briefly vortex the tube and then do a quick spin (less than 5000xg) to concentrate the liquid at the bottom.
5. Store the suspended plasmid at -20°C. The DNA is stable for at least one year from date of shipping when stored at -20°C.

RefSeq: [NM_004930.5](#)

RefSeq Size: 1647 bp

RefSeq ORF: 819 bp

Locus ID: 832

UniProt ID: [P47756](#)

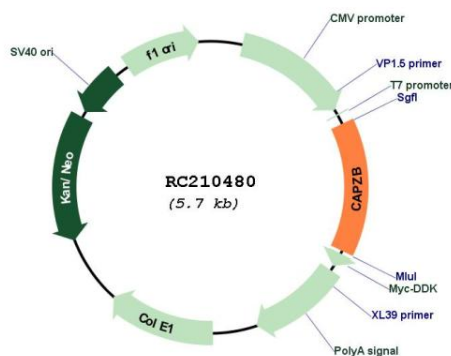
Cytogenetics: 1p36.13

Domains: F_actin_cap_B

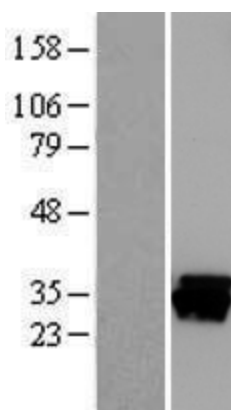
MW: 30.4 kDa

Gene Summary: This gene encodes the beta subunit of the barbed-end actin binding protein, which belongs to the F-actin capping protein family. The capping protein is a heterodimeric actin capping protein that blocks actin filament assembly and disassembly at the fast growing (barbed) filament ends and functions in regulating actin filament dynamics as well as in stabilizing actin filament lengths in muscle and nonmuscle cells. A pseudogene of this gene is located on the long arm of chromosome 2. Multiple alternatively spliced transcript variants encoding different isoforms have been found.[provided by RefSeq, Aug 2013]

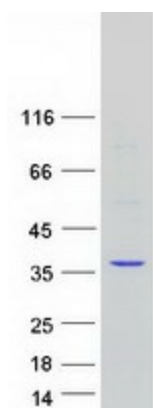
Product images:



Circular map for RC210480



Western blot validation of overexpression lysate (Cat# [LY417647]) using anti-DDK antibody (Cat# [TA50011-100]). Left: Cell lysates from untransfected HEK293T cells; Right: Cell lysates from HEK293T cells transfected with RC210480 using transfection reagent MegaTran 2.0 (Cat# [TT210002]).



Coomassie blue staining of purified CAPZB protein (Cat# [TP310480]). The protein was produced from HEK293T cells transfected with CAPZB cDNA clone (Cat# RC210480) using MegaTran 2.0 (Cat# [TT210002]).