

Product datasheet for RC210472

CFHL1 (CFHR1) (NM_002113) Human Tagged ORF Clone

Product data:

Product Type:	Expression Plasmids
Product Name:	CFHL1 (CFHR1) (NM_002113) Human Tagged ORF Clone
Tag:	Myc-DDK
Symbol:	CFHL1
Synonyms:	CFHL; CFHL1; CFHL1P; CFHR1P; FHR-1; FHR1; H36; H36-1; H36-2; HFL1; HFL2
Mammalian Cell Selection:	Neomycin
Vector:	pCMV6-Entry (PS100001)
E. coli Selection:	Kanamycin (25 ug/mL)
ORF Nucleotide Sequence:	>RC210472 ORF sequence Red=Cloning site Blue=ORF Green=Tags(s)

TTTTGTAATACGACTCACTATAGGGCGGCCGGAATTCGTCGACTGGATCCGGTACCGAGGAGATCTGCC
GCC**CGATCGCC**

ATGTGGCTCCTGGTCAGTGTAATTCTAATCTCACGGATATCCTCTGTTGGGGGAGAAGCAACATTTTGTG
ATTTTCCAAAAATAACCATGGAATTCTATGATGAAGAAAAATAAGCCATTTTCCAGGTTCTCTAC
AGGGGAAGTTTTCTATTACTCCTGTGAATATAATTTTGTGTCTCCTTCAAATCATTGGACTCGCATA
ACATGCACAGAAGAAGGATGGTCACCAACACCAAAGTGTCTCAGACTGTGTTTCTTTCTTTTGTGGAAA
ATGGTCATTCTGAATCTCAGGACAAACACATCTGGAAGGTGATACTGTGCAAATTTATTTGCAACACAGG
ATACAGGCTTCAAACAATGAGAACAACATTTTCATGTGTAGAACGGGGCTGGTCCACCCCTCCCAATGC
AGGTCCACTGACACTTCTGTGTGAATCCGCCACAGTACAAAATGCTCATATACTGTGCGAGACAGATGA
GTAATATCCATCTGGTGAGAGAGTACGTTATGAATGTAGGAGCCCTTATGAAATGTTTGGGGATGAAGA
AGTGATGTGTTTAAATGGAACTGGACAGAACCACCTCAATGCAAAGATTCTACGGGAAAATGTGGGCC
CCTCCACCTATTGACAAATGGGGACATTCTTATTCCCGTTGTCAGTATATGCTCCAGCTTCATCAGTTG
AGTACCAATGCCAGAACTTGATCAACTTGAGGGTAACAAGCGAATAACATGTAGAAATGGACAATGGTC
AGAACCACAAAATGCTTACATCCGTGTGAATATCCCGAGAAATATGGAAAATATAACATAGCATT
AGGTGGACAGCCAAACAGAAGCTTTATTTGAGAACAGGTGAATCAGCTGAATTTGTGTAAACGGGGAT
ATCGTCTTTCATCAGTTCTCACACATTGCCAACACATGTTGGGATGGGAACTGGAGTATCCAACCTTG
TGCAAAAAGA

ACGCGTACGCGGCCGCTCGAGCAGAACTCATCTCAGAAGAGGATCTGGCAGCAAATGATATCCTGGATT
ACAAGGATGACGACGATAAGGTTTAA



[View online »](#)

Protein Sequence: >RC210472 protein sequence
Red=Cloning site Green=Tags(s)

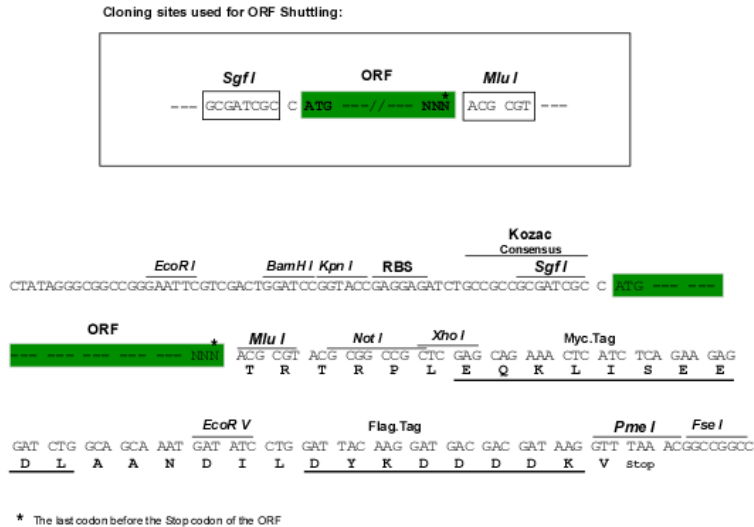
MWLLVSVILISRISSVGGGEATFCDFPKINHILYDEEKYPFSQVPTGEVFYYSCEYNFVSPSKSFWTRI
 TCTEEGWSPTPKCLRLCFPPFVENGHSESSGQTHLEGDTVQIICNTGYRLQNNENNI SCVERGWSTPPKC
 RSTDTSCVNPPTVQNAHILSRQMSKYPSGERVRYECSRSPYEMFGDEEVMCLNGNWTEPPQCKDSTGKCGP
 PPPIDNGDITSFPLSVYAPASSVEYQCQNLYQLEGNKRITCRNGQWSEPPKCLHPCVISREIMENYNIAL
 RWTAKQLYLRTGESAEFVCKRGYRLSSRSHTLRITTCWDGKLEYPTCAKR

TRTRPLEQKLISEEDLAANDILDYKDDDDKV

Chromatograms: https://cdn.origene.com/chromatograms/mk6706_g11.zip

Restriction Sites: SgfI-MluI

Cloning Scheme:



ACCN: NM_002113

ORF Size: 990 bp

OTI Disclaimer: The molecular sequence of this clone aligns with the gene accession number as a point of reference only. However, individual transcript sequences of the same gene can differ through naturally occurring variations (e.g. polymorphisms), each with its own valid existence. This clone is substantially in agreement with the reference, but a complete review of all prevailing variants is recommended prior to use. [More info](#)

OTI Annotation: This clone was engineered to express the complete ORF with an expression tag. Expression varies depending on the nature of the gene.

Components: The ORF clone is ion-exchange column purified and shipped in a 2D barcoded Matrix tube containing 10ug of transfection-ready, dried plasmid DNA (reconstitute with 100 ul of water).

Reconstitution Method:

1. Centrifuge at 5,000xg for 5min.
2. Carefully open the tube and add 100ul of sterile water to dissolve the DNA.
3. Close the tube and incubate for 10 minutes at room temperature.
4. Briefly vortex the tube and then do a quick spin (less than 5000xg) to concentrate the liquid at the bottom.
5. Store the suspended plasmid at -20°C. The DNA is stable for at least one year from date of shipping when stored at -20°C.

RefSeq: [NM_002113.3](#)

RefSeq Size: 1312 bp

RefSeq ORF: 993 bp

Locus ID: 3078

UniProt ID: [Q03591](#)

Cytogenetics: 1q31.3

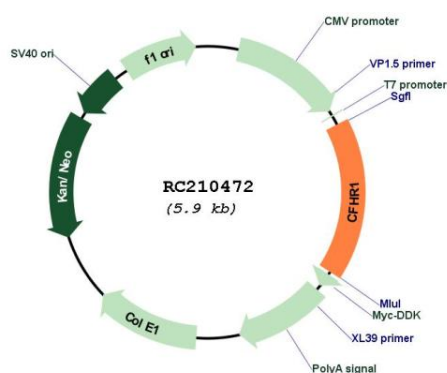
Domains: CCP

Protein Families: Secreted Protein

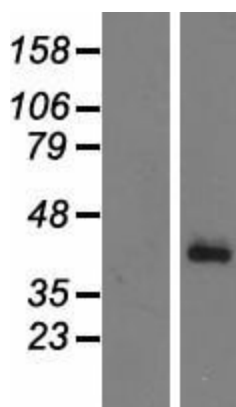
MW: 37.7 kDa

Gene Summary: This gene encodes a secreted protein belonging to the complement factor H protein family. It binds to *Pseudomonas aeruginosa* elongation factor Tuf together with plasminogen, which is proteolytically activated. It is proposed that Tuf acts as a virulence factor by acquiring host proteins to the pathogen surface, controlling complement, and facilitating tissue invasion. Mutations in this gene are associated with an increased risk of atypical hemolytic-uremic syndrome. [provided by RefSeq, Oct 2009]

Product images:



Circular map for RC210472



Western blot validation of overexpression lysate (Cat# [LY419531]) using anti-DDK antibody (Cat# [TA50011-100]). Left: Cell lysates from untransfected HEK293T cells; Right: Cell lysates from HEK293T cells transfected with RC210472 using transfection reagent MegaTran 2.0 (Cat# [TT210002]).