

## Product datasheet for **RC210471**

### Fibrinogen beta chain (FGB) (NM\_005141) Human Tagged ORF Clone

#### Product data:

Product Type:	Expression Plasmids
Product Name:	Fibrinogen beta chain (FGB) (NM_005141) Human Tagged ORF Clone
Tag:	Myc-DDK
Symbol:	Fibrinogen beta chain
Synonyms:	HEL-S-78p
Mammalian Cell Selection:	Neomycin
Vector:	pCMV6-Entry (PS100001)
E. coli Selection:	Kanamycin (25 ug/mL)



[View online »](#)

**ORF Nucleotide Sequence:**

>RC210471 ORF sequence  
 Red=Cloning site Blue=ORF Green=Tags(s)

TTTTGTAATACGACTCACTATAGGGCGGCCGGAATTCGTCGACTGGATCCGGTACCGAGGAGATCTGCC  
 GCC**CGGATCGCC**

ATGAAAAGGATGGTTTCTTGGAGCTTCCACAACTTAAACCATGAAACATCTATTATTGCTACTATTGT  
 GTGTTTTTAAAGTCCAAGGTGTCAACGACAATGAGGAGGTTTTCTTCAGTGCCCGTGGTATCG  
 ACCCCTTGACAAGAAGAGAGAAGAGGCTCCAGCCTGAGGCTGCCCCACCGCCCATCAGTGGAGGTGGC  
 TATCGGGCTCGTCCAGCCAAGCAGCTGCCACTAAAAGAAAGTAGAAAGAAAAGCCCCTGATGCTGGAG  
 GCTGTCTTACGCTGACCCAGACCTGGGGTGTGTGTCTACAGGATGTCAGTTGCAAGAGGCTTTGCT  
 ACAACAGGAAAGCCAATCAGAAATAGTGTGATGAGTTAAATAACAATGTGAAGCTGTTCCAGACC  
 TCCTCTTCTTCTTTAGTACATGATTTGCTGAAAGACCTGTGGCAAAGAGGCCAGAAGCAAGTAAAG  
 ATATGAAAATGTAGTCAATGAGTACTCCTCAGAACTGGAAAAGCACCAATTATATAGATGAGACTGT  
 GAATAGCAATATCCCACTAACCTTCGTGTGCTTCGTTCAATCTGGAAAACCTGAGAAGCAAAATACAA  
 AAGTTAGAATCTGATGTCCTCAGCTCAAAATGGAATATTGTCGACCCCATGCACTGTGCAATATTC  
 CTGTGGTGTCTGGCAAAGAAATGTGAGGAAATACCAGGAAAGGAGGTGAAACATCTGAAATGATCTCAT  
 TCAACCTGACAGTTCTGTCAAACCGTATAGAGTACTGTGACATGAATACAGAAATGGAGGATGGACA  
 GTGATTCAGAACCGTCAAGACCGTAGTGTGACTTTGGCAGGAAATGGGTCCATATAAACAGGGATTTG  
 GAAATGTTGCAACCAACACAGATGGGAAGAACTGTGGCCTACCAGGTGAATATTGGCTTGAAATGA  
 TAAAATTAGCCAGCTTACCAGGATGGGACCCACAGAAGTTTGTAGAAAATGGAGGACTGAAAGGAGAC  
 AAAGTAAAGGCTCACTATGGAGGATCAGTACAGAAATGAAGCCAACAATACCAGATCTCAGTGAACA  
 AATACAGAGGAACAGCCGGTAAATGCCCTCATGGATGGAGCATCTCAGCTGATGGGAGAAAACAGGACCAT  
 GACCATTACAAACGGCATGTTCTTCAGCAGATGACAGAGACAATGACGGCTGGTTAACATCAGATCCC  
 AGAAAACAGTGTCTAAAGAAGACGGTGGTGGATGGTGGTATAATAGATGTCATGCAGCCAATCCAAACG  
 GCAGATACTACTGGGTTGACAGTACACCTGGGACATGGCAAAGCATGGCACAGATGATGGTGTAGTATG  
 GATGAATTGGAAGGGTCTGCTACTCAATGAGGAAGTAGATGAAAGATCAGGCCCTTCTCCCACAG  
 CAA

**ACGCGTACGCGGCCGCTCGAGCAGAACTCATCTCAGAAGAGGATCTGGCAGCAATGATATCCTGGATT**  
**ACAAGGATGACGACGATAAGGTTTAA**

**Protein Sequence:**

>RC210471 protein sequence  
 Red=Cloning site Green=Tags(s)

MKRMVSWSFHKLKTMKHLLELVFLVKSQGVNDNEEGFFSARGHRPLDKKREEAPSLRPAPPPISGGG  
 YRARPAAAATQKKVERKAPDAGGCLHADPDLGVLCPTGCQLQEALLQQERPIRNSVDELNNNVEAVSQT  
 SSSSFQYMYLLKDLWQKQKQVKNENVNEYSSELEKHLYIDEIVNSNIPTNLRVLSILENLRKIQ  
 KLESDVSAQMEYCRTPCTVSCNIPVVSQKECEEITRKGGETSEMYLIQPDSSVKPYRVYCDMNTENGWWT  
 VIQNRQDGSVDFGRKWDQKQFQGNVATNTDGKNYCGLPGEYWLGNKISQLTRMGTELLIEMEDWKGD  
 KVKAHYGGFTVQNEANKYQISVNKYRGTAGNALMDGASQLMGENRTMTIHNGMFFSTYDRDNDGWLSDP  
 RKQCSKEDGGGWYNRCHAANPNGRYYWGGQYTWDMAKHGTDDGVVMMNWKGSWYSMRKMSMKIRPFPQ  
 Q

**TRTRPLEQKLISEEDLAANDILDYKDDDDKV**

**Chromatograms:**

[https://cdn.origene.com/chromatograms/mk6547\\_b04.zip](https://cdn.origene.com/chromatograms/mk6547_b04.zip)

**Restriction Sites:**

Sgfl-Mlul

**Cloning Scheme:**


**ACCN:** NM\_005141

**ORF Size:** 1473 bp

**OTI Disclaimer:** The molecular sequence of this clone aligns with the gene accession number as a point of reference only. However, individual transcript sequences of the same gene can differ through naturally occurring variations (e.g. polymorphisms), each with its own valid existence. This clone is substantially in agreement with the reference, but a complete review of all prevailing variants is recommended prior to use. [More info](#)

**OTI Annotation:** This clone was engineered to express the complete ORF with an expression tag. Expression varies depending on the nature of the gene.

**Components:** The ORF clone is ion-exchange column purified and shipped in a 2D barcoded Matrix tube containing 10ug of transfection-ready, dried plasmid DNA (reconstitute with 100 ul of water).

**Reconstitution Method:**

1. Centrifuge at 5,000xg for 5min.
2. Carefully open the tube and add 100ul of sterile water to dissolve the DNA.
3. Close the tube and incubate for 10 minutes at room temperature.
4. Briefly vortex the tube and then do a quick spin (less than 5000xg) to concentrate the liquid at the bottom.
5. Store the suspended plasmid at -20°C. The DNA is stable for at least one year from date of shipping when stored at -20°C.

**RefSeq:** [NM\\_005141.5](#)

**RefSeq Size:** 3628 bp

**RefSeq ORF:** 1476 bp

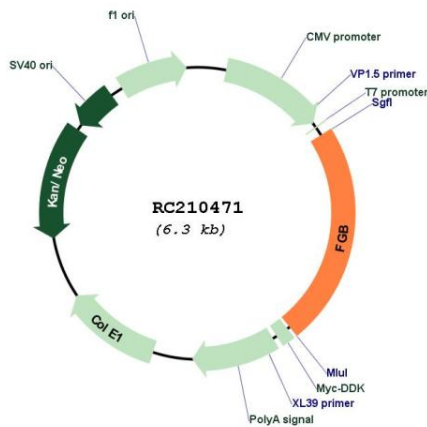
**Locus ID:** 2244

**UniProt ID:** [P02675](#)

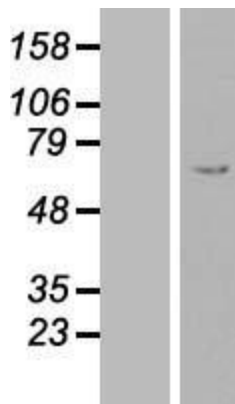
**Cytogenetics:** 4q31.3

<b>Domains:</b>	FBG
<b>Protein Families:</b>	Druggable Genome, Secreted Protein
<b>Protein Pathways:</b>	Complement and coagulation cascades
<b>MW:</b>	55.9 kDa
<b>Gene Summary:</b>	The protein encoded by this gene is the beta component of fibrinogen, a blood-borne glycoprotein comprised of three pairs of nonidentical polypeptide chains. Following vascular injury, fibrinogen is cleaved by thrombin to form fibrin which is the most abundant component of blood clots. In addition, various cleavage products of fibrinogen and fibrin regulate cell adhesion and spreading, display vasoconstrictor and chemotactic activities, and are mitogens for several cell types. Fibrinogen serves key roles in hemostasis and antimicrobial host defense. Mutations in this gene lead to several disorders, including afibrinogenemia, dysfibrinogenemia, hypodysfibrinogenemia and thrombotic tendency. [provided by RefSeq, Aug 2020]

**Product images:**



Circular map for RC210471



Western blot validation of overexpression lysate (Cat# [LY417459]) using anti-DDK antibody (Cat# [TA50011-100]). Left: Cell lysates from untransfected HEK293T cells; Right: Cell lysates from HEK293T cells transfected with RC210471 using transfection reagent MegaTran 2.0 (Cat# [TT210002]).