

## Product datasheet for **RC210467**

### LBH (NM\_030915) Human Tagged ORF Clone

#### Product data:

**Product Type:** Expression Plasmids  
**Product Name:** LBH (NM\_030915) Human Tagged ORF Clone  
**Tag:** Myc-DDK  
**Symbol:** LBH  
**Vector:** pCMV6-Entry (PS100001)  
**E. coli Selection:** Kanamycin (25 ug/mL)  
**Cell Selection:** Neomycin  
**ORF Nucleotide Sequence:** >RC210467 ORF sequence  
**Red=Cloning site Blue=ORF Green=Tags(s)**

TTTTGTAATACGACTCACTATAGGGCGGCCGGAATTCGTCGACTGGATCCGGTACCGAGGAGATCTGCC  
GCC**CGATCGCC**

ATGTCTATATATTTCCCATTCCTGCCCCGACTATCTGAGATCGGCCAAGATGACTGAGGTGATGATGA  
ACACCCAGCCCATGGAGGAGATCGGCCTCAGCCCCGCAAGGATGGCCTTCTACCAGATCTTCCAGAG  
CCCGTCAGATTTTGACCGCTGCTGCAAACTGAAGGACCGTCTGCCCTCCATAGTGGTGAACCCACAGAA  
GGGGAGGTGGAGAGCGGGGAGCTCCGGTGGCCCCCTGAGGAGTTCTGGTCCAGGAGGATGAGCAAGATA  
ACTGCGAAGAGACAGCGAAAGAAAATAAAGAGCAG

**ACGCGT**ACGCGGCCGCTCGAGCAGAACTCATCTCAGAAGAGGATCTGGCAGCAAATGATATCCTGGATT  
ACAAGGATGACGACGATAAGGTTTAA

**Protein Sequence:** >RC210467 protein sequence  
**Red=Cloning site Green=Tags(s)**

MSIYFPIHCPDYLRSAKMTEVMNTQPMEEIGLSPRKDGLSYQIFPDPSPDFDRCKLKDRLPSIVVEPTE  
GEVESGELRWPPEEFLVQEDEQDNCEETAKENKEQ

**TR**TRPLEQKLISEEDLAANDILDYKDDDDKV

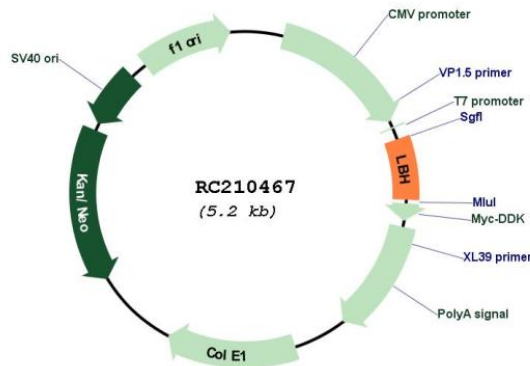
**Chromatograms:** [https://cdn.origene.com/chromatograms/mk6143\\_h03.zip](https://cdn.origene.com/chromatograms/mk6143_h03.zip)

**Restriction Sites:** SgfI-MluI



[View online »](#)

**Cloning Scheme:**

**Plasmid Map:**


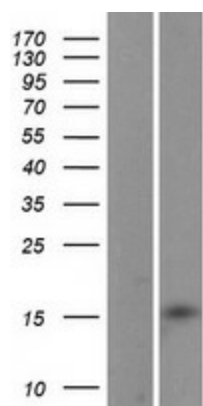
ACCN: NM\_030915

ORF Size: 315 bp

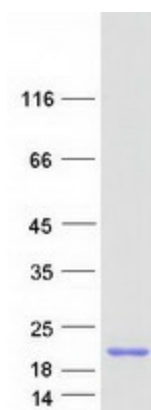
OTI Disclaimer: The molecular sequence of this clone aligns with the gene accession number as a point of reference only. However, individual transcript sequences of the same gene can differ through naturally occurring variations (e.g. polymorphisms), each with its own valid existence. This clone is substantially in agreement with the reference, but a complete review of all prevailing variants is recommended prior to use. [More info](#)

<b>OTI Annotation:</b>	This clone was engineered to express the complete ORF with an expression tag. Expression varies depending on the nature of the gene.
<b>Components:</b>	The ORF clone is ion-exchange column purified and shipped in a 2D barcoded Matrix tube containing 10ug of transfection-ready, dried plasmid DNA (reconstitute with 100 ul of water).
<b>Reconstitution Method:</b>	<ol style="list-style-type: none"><li>1. Centrifuge at 5,000xg for 5min.</li><li>2. Carefully open the tube and add 100ul of sterile water to dissolve the DNA.</li><li>3. Close the tube and incubate for 10 minutes at room temperature.</li><li>4. Briefly vortex the tube and then do a quick spin (less than 5000xg) to concentrate the liquid at the bottom.</li><li>5. Store the suspended plasmid at -20°C. The DNA is stable for at least one year from date of shipping when stored at -20°C.</li></ol>
<b>RefSeq:</b>	<a href="#">NM_030915.4</a>
<b>RefSeq Size:</b>	2956 bp
<b>RefSeq ORF:</b>	318 bp
<b>Locus ID:</b>	81606
<b>UniProt ID:</b>	<a href="#">Q53QV2</a>
<b>Cytogenetics:</b>	2p23.1
<b>MW:</b>	12.2 kDa
<b>Gene Summary:</b>	Transcriptional activator which may act in mitogen-activated protein kinase signaling pathway.[UniProtKB/Swiss-Prot Function]

### Product images:



Western blot validation of overexpression lysate (Cat# [LY403092]) using anti-DDK antibody (Cat# [TA50011-100]). Left: Cell lysates from untransfected HEK293T cells; Right: Cell lysates from HEK293T cells transfected with RC210467 using transfection reagent MegaTran 2.0 (Cat# [TT210002]).



Coomassie blue staining of purified LBH protein (Cat# [TP310467]). The protein was produced from HEK293T cells transfected with LBH cDNA clone (Cat# RC210467) using MegaTran 2.0 (Cat# [TT210002]).