

## Product datasheet for **RC210453**

### SPTSSB (NM\_001040100) Human Tagged ORF Clone

#### Product data:

**Product Type:** Expression Plasmids  
**Product Name:** SPTSSB (NM\_001040100) Human Tagged ORF Clone  
**Tag:** Myc-DDK  
**Symbol:** SPTSSB  
**Synonyms:** ADMP; C3orf57; SSSPTB  
**Mammalian Cell Selection:** Neomycin  
**Vector:** pCMV6-Entry (PS100001)  
**E. coli Selection:** Kanamycin (25 ug/mL)  
**ORF Nucleotide Sequence:** >RC210453 ORF sequence  
Red=Cloning site Blue=ORF Green=Tags(s)

TTTTGTAATACGACTCACTATAGGGCGGCCGGAATTCGTCGACTGGATCCGGTACCGAGGAGATCTGCC  
GCC**CGGATCGCC**

ATGGATTTGAGCGGTGTGAAGGAATATTTCTCCTGGCTCTACTATCAATACCAAATCATTAGCTGCTGTG  
CTGTTTTAGAGCCCTGGGAGCGATCTATGTTTAACACCATCTTAACCATTATTGCTATGGTGGTATA  
CACTGCCTATGTCTTTATTCCAATCCACATTCGCCTGGCTGGGAATTTTCTCAAAAATATGTGGATAT  
CACAGTACAATTTCTAAT

**ACGCGT**ACGCGGCCGCTCGAGCAGAAACTCATCTCAGAAGAGGATCTGGCAGCAAATGATATCCTGGATT  
ACAAGGATGACGACGATAAGGTTTAA

**Protein Sequence:** >RC210453 protein sequence  
Red=Cloning site Green=Tags(s)  
  
MDLRRVKEYFSWLYYQYQIISCCAVLEPWERSMFNTILLTIIAMVVYTA YVFIP IHIRLAWEFFSKICGY  
HSTISN

**TRTRPLEQKLISEEDLAANDILDYKDDDDKV**

**Chromatograms:** [https://cdn.origene.com/chromatograms/mk6555\\_f09.zip](https://cdn.origene.com/chromatograms/mk6555_f09.zip)

**Restriction Sites:** Sgfl-MluI



[View online »](#)

Cloning Scheme:



ACCN: NM\_001040100

ORF Size: 228 bp

OTI Disclaimer: The molecular sequence of this clone aligns with the gene accession number as a point of reference only. However, individual transcript sequences of the same gene can differ through naturally occurring variations (e.g. polymorphisms), each with its own valid existence. This clone is substantially in agreement with the reference, but a complete review of all prevailing variants is recommended prior to use. [More info](#)

OTI Annotation: This clone was engineered to express the complete ORF with an expression tag. Expression varies depending on the nature of the gene.

Components: The ORF clone is ion-exchange column purified and shipped in a 2D barcoded Matrix tube containing 10ug of transfection-ready, dried plasmid DNA (reconstitute with 100 ul of water).

Reconstitution Method:

1. Centrifuge at 5,000xg for 5min.
2. Carefully open the tube and add 100ul of sterile water to dissolve the DNA.
3. Close the tube and incubate for 10 minutes at room temperature.
4. Briefly vortex the tube and then do a quick spin (less than 5000xg) to concentrate the liquid at the bottom.
5. Store the suspended plasmid at -20°C. The DNA is stable for at least one year from date of shipping when stored at -20°C.

RefSeq: [NM\\_001040100.1](#), [NP\\_001035189.1](#)

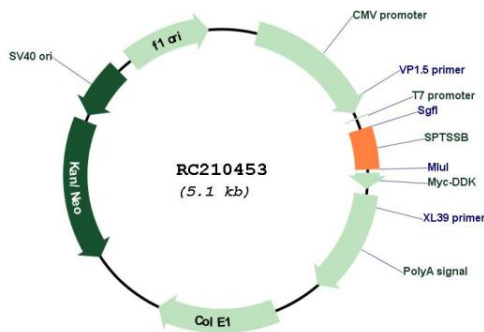
RefSeq Size: 2306 bp

RefSeq ORF: 231 bp

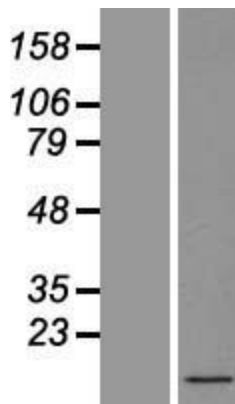
Locus ID: 165679

**UniProt ID:** [Q8NFR3](#)  
**Cytogenetics:** 3q26.1  
**Protein Families:** Transmembrane  
**MW:** 9.2 kDa  
**Gene Summary:** Serine palmitoyltransferase (SPT; EC 2.3.1.50) catalyzes the first committed and rate-limiting step in sphingolipid biosynthesis. SSSPTB is a small SPT subunit that stimulates SPT activity and confers acyl-CoA preference to the SPT catalytic heterodimer of SPTLC1 (MIM 605712) and either SPTLC2 (MIM 605713) or SPTLC3 (MIM 611120) (Han et al., 2009 [PubMed 19416851]).[supplied by OMIM, Nov 2010]

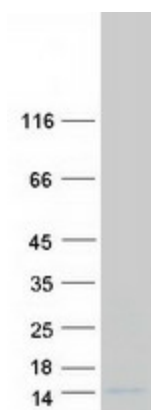
**Product images:**



Circular map for RC210453



Western blot validation of overexpression lysate (Cat# [LY421673]) using anti-DDK antibody (Cat# [TA50011-100]). Left: Cell lysates from untransfected HEK293T cells; Right: Cell lysates from HEK293T cells transfected with RC210453 using transfection reagent MegaTran 2.0 (Cat# [TT210002]).



Coomassie blue staining of purified SPTSSB protein (Cat# [TP310453]). The protein was produced from HEK293T cells transfected with SPTSSB cDNA clone (Cat# RC210453) using MegaTran 2.0 (Cat# [TT210002]).