

Product datasheet for RC210443

GSH2 (GSX2) (NM_133267) Human Tagged ORF Clone

Product data:

Product Type:	Expression Plasmids
Product Name:	GSH2 (GSX2) (NM_133267) Human Tagged ORF Clone
Tag:	Myc-DDK
Symbol:	GSH2
Synonyms:	DMJDS2; GSH2
Mammalian Cell Selection:	Neomycin
Vector:	pCMV6-Entry (PS100001)
E. coli Selection:	Kanamycin (25 ug/mL)
ORF Nucleotide Sequence:	>RC210443 representing NM_133267 Red=Cloning site Blue=ORF Green=Tags(s)

TTTTGTAATACGACTCACTATAGGGCGCCGGGAATTCGTCGACTGGATCCGGTACCGAGGAGATCTGCC
GCC**CGATCGCC**

ATGTCGGCTCCTTCTATGTCGACTCGCTCATCATCAAGGACACCTCACGGCCTGCGCCCTCGTGCCTG
AACCGCACCCGGGCGGATTTCTTCATCCCGTTGGCATGCCGCCCCATTGGTGATGTCCGTGCCG
CCCCGGCTGCCGTCCCACAAGAGCGGCGGTTCTGCGTGTGCCCTCTCTGCGTCACTTCGCACCTGCAC
TCCTCTCGGGGTCTGTGGCGCCGCGCAGCGGGGCGCAGGGGCCGGGTTACCGGGCCGGAGGCAGTG
GGGTGGCAGGGGCGCAGGGCACTGCCTCTGCTTAAGAGCCAGTTCTCTCGGCTCCTGGGACGCGCA
GTTTTGCCCGCGGTGAACCATGCGCATCATCACCACCACCCGCGCAGCACCACCATCACCATCATCAG
CCCCAGCAGCCTGGCTCGGCCGCGCGGCGCAGCAGCAGCAGCGGCGGGCGGCGCGCCGCGGCGCTTG
GGCACCCGACGACCACGACCTGTCTGCACCGCCACCACCTACAACGTGGCGGACCCGCGGAGATTCCA
CTGCCTACCATGGGAGGCTCTGACGCCAGCCAGGTACCCAATGGCAAGAGGATGAGGACGGCGTTCACT
AGCACGCAACTCCTGGAGCTGGAGAGAGAATTCTTCCAACATGTACCTGTCTCGACTCCGGAGGATTG
AAATCGCCACTTACCTGAACCTGTCGGAGAAGCAGGTGAAATCTGGTTTCAGAACCGCCGAGTGAAGCA
CAAGAAGGAGGGGAAGGGCACGCAGAGGAACAGTCACGCGGGCTGCAAGTGCCTCGGAGCCAGGTGCAC
TACGCGCTCCGAGGATGAGGACTCCCTGTGCGCCGCCCTCAGCCAACGATGACAAGGAGATTTCCCCT
TA

ACGCGTACGCGGCCGCTCGAGCAGAACTCATCTCAGAAGAGGATCTGGCAGCAATGATATCCTGGATT
ACAAGGATGACGACGATAAGGTTTAA



[View online »](#)

Protein Sequence: >RC210443 representing NM_133267
Red=Cloning site Green=Tags(s)

MSRSFYVDSLIIKDTSRPAPSLPEHPGPDFFIPLGMPPLVMSVSGPGCPSRKSGAFVCVPLCVTSHLH
 SSRGSVGAGSGGAGAVTGAGGSGVAGAAGALPLLKSQFSSAPGDAQFCPRVNHAAAAHHPPQHAAAAHQ
 PQQPGSAAAAAAAAAAAAAAAAALGHPQHHPVCTATTYNVADPRRFHCLTMGGSDASQVPNGKRMRTAFT
 STQLELEREFSSNMYLSRLRRIEIATYLNLSKQVKIWFQNRVVKHKKEGKGTQRNSHAGCKCVGSQVH
 YARSEDEDSLSPASANDDKAISPL

TRTRPLEQKLISEEDLAANDILDYKDDDDKV

Chromatograms: https://cdn.origene.com/chromatograms/mg3024_b06.zip

Restriction Sites: SgfI-MluI

Cloning Scheme:



ACCN: NM_133267

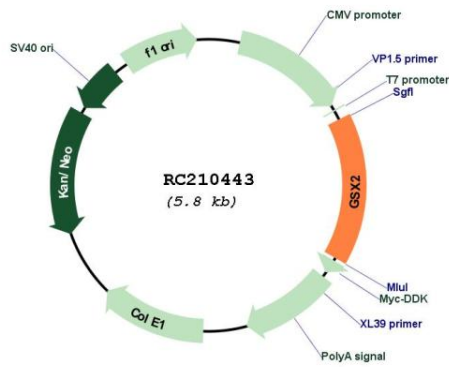
ORF Size: 912 bp

OTI Disclaimer: Due to the inherent nature of this plasmid, standard methods to replicate additional amounts of DNA in E. coli are highly likely to result in mutations and/or rearrangements. Therefore, OriGene does not guarantee the capability to replicate this plasmid DNA. Additional amounts of DNA can be purchased from OriGene with batch-specific, full-sequence verification at a reduced cost. Please contact our customer care team at custsupport@origene.com or by calling 301.340.3188 option 3 for pricing and delivery.

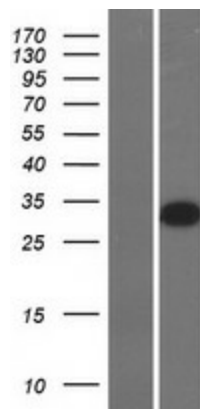
The molecular sequence of this clone aligns with the gene accession number as a point of reference only. However, individual transcript sequences of the same gene can differ through naturally occurring variations (e.g. polymorphisms), each with its own valid existence. This clone is substantially in agreement with the reference, but a complete review of all prevailing variants is recommended prior to use. [More info](#)

OTI Annotation:	This clone was engineered to express the complete ORF with an expression tag. Expression varies depending on the nature of the gene.
Components:	The ORF clone is ion-exchange column purified and shipped in a 2D barcoded Matrix tube containing 10ug of transfection-ready, dried plasmid DNA (reconstitute with 100 ul of water).
Reconstitution Method:	<ol style="list-style-type: none">1. Centrifuge at 5,000xg for 5min.2. Carefully open the tube and add 100ul of sterile water to dissolve the DNA.3. Close the tube and incubate for 10 minutes at room temperature.4. Briefly vortex the tube and then do a quick spin (less than 5000xg) to concentrate the liquid at the bottom.5. Store the suspended plasmid at -20°C. The DNA is stable for at least one year from date of shipping when stored at -20°C.
RefSeq:	NM_133267.2
RefSeq Size:	1262 bp
RefSeq ORF:	915 bp
Locus ID:	170825
UniProt ID:	Q9BZM3
Cytogenetics:	4q12
MW:	31.9 kDa
Gene Summary:	During telencephalic development, causes ventralization of pallial progenitors and, depending on the developmental stage, specifies different neuronal fates. At early stages, necessary and sufficient to correctly specify the ventral lateral ganglionic eminence (LGE) and its major derivatives, the striatal projection neurons. At later stages, may specify LGE progenitors toward dorsal LGE fates, including olfactory bulb interneurons (By similarity). Transcription factor that binds 5'-CNAATTAG-3' DNA sequence.[UniProtKB/Swiss-Prot Function]

Product images:



Circular map for RC210443



Western blot validation of overexpression lysate (Cat# [LY408856]) using anti-DDK antibody (Cat# [TA50011-100]). Left: Cell lysates from untransfected HEK293T cells; Right: Cell lysates from HEK293T cells transfected with RC210443 using transfection reagent MegaTran 2.0 (Cat# [TT210002]).