

Product datasheet for **RC210438**

Protein kinase Y linked (PRKY) (NM_002760) Human Tagged ORF Clone

Product data:

Product Type:	Expression Plasmids
Product Name:	Protein kinase Y linked (PRKY) (NM_002760) Human Tagged ORF Clone
Tag:	Myc-DDK
Symbol:	Protein kinase Y linked
Synonyms:	OTTHUMP00000033227; protein kinase, Y-linked
Mammalian Cell Selection:	Neomycin
Vector:	pCMV6-Entry (PS100001)
E. coli Selection:	Kanamycin (25 ug/mL)
ORF Nucleotide Sequence:	>RC210438 ORF sequence Red=Cloning site Blue=ORF Green=Tags(s)

TTTGTGAATACGACTCACTATAGGGCGGCCGGAATTCGTCGACTGGATCCGGTACCGAGGAGATCTGCC
GCC**CGATCGC**

ATGGAGGCGCCCGGGCCGCGCCAGGCGGCCGCGCGGAGAGCAACTCCCAGAGGTGACGGAGGATGCCG
CCGACTGGGCGCCCGCGCTCTGCCCCAGCCCCGAGGCGCGGTCCCGGAGGCGCCTGCCTACCGCCTGCA
GGACTGCGACGCGCTGGTCACCATGGGCACTGGGACGTTCCGGCGGGTGACCTGGTGAAGGAGAAGACA
GCCAAGCATTCTTCGCCCTCAAGGTGATGAGCATTCCCGACGTCATCCCGGAAGCAGGAGCAGCAGC
TGACAATGAGAAGTCTGCTCTGAAGGAAGTCAGCCACCCGTTCTCATCAGGCTGTTCTGGACGTGGCA
TGAGGAGCGCTTCTCTACATGCTCATGGAGTATGTGCCGGTGGCGAGCTCTTCAGCTACCTGCGCAAC
CGGGGGCACTTCTCCAGCACACGGGGCTTCTACTCTGCGGAGATCATCTGTGCCATTGAGTACCTGC
ACTCCAAGGAGATCGTCTACAGGGATTTGAAGCCGGAACATCCTGCTGGATAGGGATGGTCACATCAA
GCTCACGGACTTTGGGTTTGCCAAGAAGCTGGTAGACAGGACTTGGACCCTCTGTGGAACACCCGAGTAC
CTAGCCCCGAAGTATTTCAGAGCAAGGGCCACGGAAGGGCCGTGGACTGGTGGGCCCTCGGCATCCTGA
TATTCGAGATGCTTTCGGGGTTTCTCCATTTTGTGATGACAACCCGTTTGGCATTATCAGAAAATCT
TGCAGGCAAACTATATTTCCCAGACATTTGGATTTCATGTAAAAACGGGGCGAATGATG

ACGCGTACGCGGCCGCTCGAGCAGAACTCATCTCAGAAGAGGATCTGGCAGCAAATGATATCCTGGATT
ACAAGGATGACGACGATAAGGTTTAA



[View online »](#)

Protein Sequence: >RC210438 protein sequence
 Red=Cloning site Green=Tags(s)

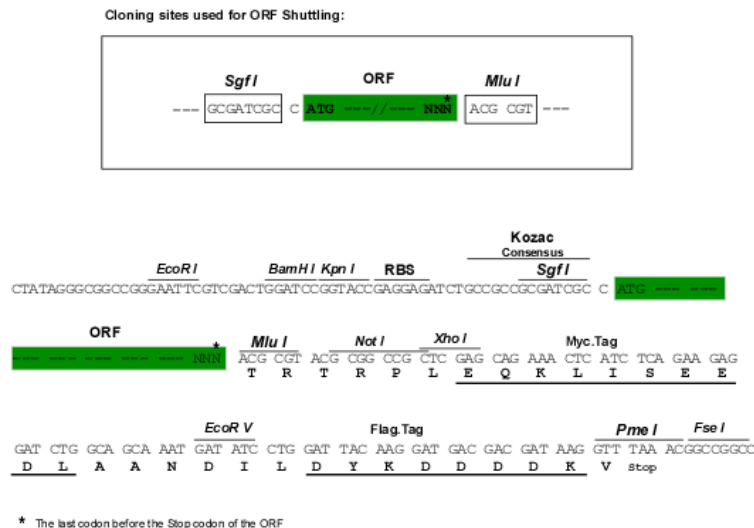
MEAPGPAQAAAESNSREVTEDAADWAPALCPSPEARSPEAPAYRLQDCDALVTMGTFGRVHLVKEKT
 AKHFFALKVMSIPDVIRRKQEQHVHNEKSVLKEVSHPFILRLFWTWHEERFLYMLMEYVPGGELFSYLRN
 RGHFSSTTGLFYSAEIIICAIEYLHSKEIYYRDLKPENILLDRDGHKLTDFGFAKKLVDRTWLTCGTPEY
 LAPEVIQSKGHGRAVDWWALGILIFEMLSGFPPFFDDNPFGIYQKILAGKLYFPRHLDFHVKTGRMM

TRTRPLEQKLISEEDLAANDILDYKDDDDKV

Chromatograms: https://cdn.origene.com/chromatograms/mk6131_a07.zip

Restriction Sites: SgfI-MluI

Cloning Scheme:



ACCN: NM_002760

ORF Size: 831 bp

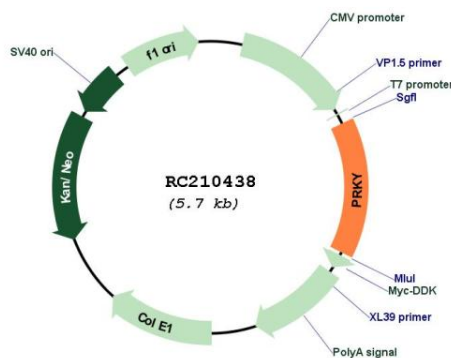
OTI Disclaimer: The molecular sequence of this clone aligns with the gene accession number as a point of reference only. However, individual transcript sequences of the same gene can differ through naturally occurring variations (e.g. polymorphisms), each with its own valid existence. This clone is substantially in agreement with the reference, but a complete review of all prevailing variants is recommended prior to use. [More info](#)

OTI Annotation: This clone was engineered to express the complete ORF with an expression tag. Expression varies depending on the nature of the gene.

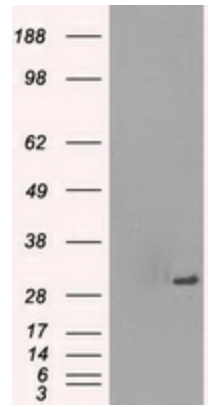
Components: The ORF clone is ion-exchange column purified and shipped in a 2D barcoded Matrix tube containing 10ug of transfection-ready, dried plasmid DNA (reconstitute with 100 ul of water).

Reconstitution Method:	<ol style="list-style-type: none"> 1. Centrifuge at 5,000xg for 5min. 2. Carefully open the tube and add 100ul of sterile water to dissolve the DNA. 3. Close the tube and incubate for 10 minutes at room temperature. 4. Briefly vortex the tube and then do a quick spin (less than 5000xg) to concentrate the liquid at the bottom. 5. Store the suspended plasmid at -20°C. The DNA is stable for at least one year from date of shipping when stored at -20°C.
Note:	Plasmids are not sterile. For experiments where strict sterility is required, filtration with 0.22um filter is required.
RefSeq:	<u>NM_002760.3, NP_002751.1</u>
RefSeq Size:	7216 bp
RefSeq ORF:	833 bp
Locus ID:	5616
Cytogenetics:	Yp11.2
Domains:	pkinase, TyrKc, S_TKc
Protein Families:	Druggable Genome, Protein Kinase
MW:	31.7 kDa
Gene Summary:	This gene is similar to the protein kinase, X-linked gene in the pseudoautosomal region of the X chromosome. The gene is classified as a transcribed pseudogene because it has lost a coding exon that results in all transcripts being candidates for nonsense-mediated decay (NMD) and unlikely to express a protein. Abnormal recombination between this gene and a related gene on chromosome X is a frequent cause of XX males and XY females. [provided by RefSeq, Jul 2010]

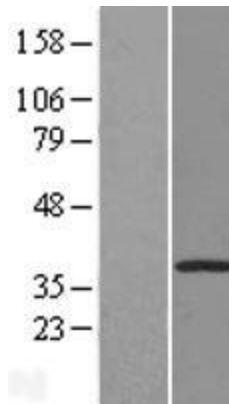
Product images:



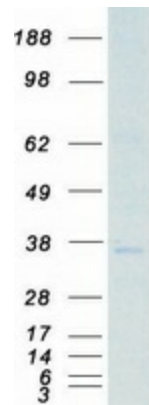
Circular map for RC210438



HEK293T cells were transfected with the pCMV6-ENTRY control (Cat# [PS100001], Left lane) or pCMV6-ENTRY PRKY (Cat# RC210438, Right lane) cDNA for 48 hrs and lysed. Equivalent amounts of cell lysates (5 ug per lane) were separated by SDS-PAGE and immunoblotted with anti-PRKY (Cat# [TA500569]). Positive lysates [LY400977] (100ug) and [LC400977] (20ug) can be purchased separately from OriGene.



Western blot validation of overexpression lysate (Cat# [LY400977]) using anti-DDK antibody (Cat# [TA50011-100]). Left: Cell lysates from untransfected HEK293T cells; Right: Cell lysates from HEK293T cells transfected with RC210438 using transfection reagent MegaTran 2.0 (Cat# [TT210002]).



Coomassie blue staining of purified PRKY protein (Cat# [TP310438]). The protein was produced from HEK293T cells transfected with PRKY cDNA clone (Cat# RC210438) using MegaTran 2.0 (Cat# [TT210002]).