

Product datasheet for RC210437

CD226 (NM_006566) Human Tagged ORF Clone

Product data:

Product Type:	Expression Plasmids
Product Name:	CD226 (NM_006566) Human Tagged ORF Clone
Tag:	Myc-DDK
Symbol:	CD226
Synonyms:	DNAM-1; DNAM1; PTA1; TLIISA1
Mammalian Cell Selection:	Neomycin
Vector:	pCMV6-Entry (PS100001)
E. coli Selection:	Kanamycin (25 ug/mL)
ORF Nucleotide Sequence:	>RC210437 ORF sequence Red=Cloning site Blue=ORF Green=Tags(s)

TTTTGTAATACGACTCACTATAGGGCGGCCGGAATTCGTCGACTGGATCCGGTACCGAGGAGATCTGCC
GCC**CGATCGCC**

ATGGATTATCCTACTTTACTTTTGGCTCTTCTTCATGTATACAGAGCTCTATGTGAAGAGGTGCTTTGGC
ATACATCAGTTCCTTTGCCGAGAACATGTCTCTAGAATGTGTGTATCCATCAATGGGCATCTTAACACA
GGTGGAGTGGTCAAGATCGGGACCCAGCAGGATCCATAGCCATTTTCAGCCCTACTCATGGCATGGTC
ATAAGGAAGCCCTATGCTGAGAGGGTTACTTTTTGAATCAACGATGGCTTCCAATAACATGACTCTTT
TCTTTTCGGAATGCCTCTGAAGATGATGTTGGCTACTATTCCTGCTCTTTACACTTACCCACAGGGAAC
TTGGCAGAAGGTGATACAGGTGGTTCAGTCAGATAGTTTTGAGGCAGCTGTGCCATCAAATAGCCACATT
GTTTCGGAACCTGGAAAGAATGTCACACTCACTTGTGAGCCTCAGATGACGTGGCCTGTGCAGGCAGTGA
GGTGGGAAAAGATCCAGCCCCGTCAGATCGACCTTAACTTACTGCAACTTGGTCCATGGCAGAAATTT
CACCTCCAAGTCCCAAGACAAATAGTGAGCAACTGCAGCCACGGAAGGTGGAGCGTCATCGTCATCCCC
GATGTCACAGTCTCAGACTCGGGGCTTTACCGTGCTACTTGCAGGCCAGCGCAGGAGAAAACGAAACCT
TCGTGATGAGATTGACTGTAGCCGAGGGTAAAACCGATAACCAATATACCCTCTTTGTGGCTGGAGGGAC
AGTTTTATTGTTGTTGTTGTTATCTCAATTACCACCATCATTGTCAATTTTCTTAACAGAAGGAGAAGG
AGAGAGAAGAGATCTATTTACAGAGTCTGGGATACACAGAAGGCACCAATAACTATAGAAGTCCCA
TCTCTACCGGTCAACCTACCAATCAATCCATGGATGATACAAGAGAGGATATTTATGTCAACTATCCAAC
CTTCTCTCGCAGACCAAAGACTAGAGTT

ACGCGTACGCGGCCGCTCGAGCAGAAACTCATCTCAGAAGAGGATCTGGCAGCAAATGATATCCTGGATT
ACAAGGATGACGACGATAAGGTTTAA



[View online »](#)

Protein Sequence: >RC210437 protein sequence
Red=Cloning site Green=Tags(s)

MDYPTLLLALLHVYRALCEEVLWHTSVVFAENMSLECVYPSMGILTQVEWFKIGTQQDSIAIFSPTHGMV
 IRKPYAERVYFLNSTMASNNMTLFFRNASEDDVGYSSCLYTPQGTWQKVIQVVQSDSFEAAVPSNSHI
 VSEPGKNVTLTCQPQMTWPVQAVRWEKIQPRQIDLLTYCNLVHGRNFTSKFPRQIVSNCSHGRWSVIVIP
 DVTVSDSGLYRCYLQASAGENETFVMRLTVAEGKTDNQYTLFVAGGTVLLLLLVISITTTIIVIFLNRRRR
 RERRDLFTESWDTQKAPNNYRSPISTGQPTNQSMDDTREDIYVNYPTFSRRPKTRV

TRTRPLEQKLISEEDLAANDILDYKDDDDKV

Chromatograms: https://cdn.origene.com/chromatograms/mk6374_g04.zip

Restriction Sites: SgfI-MluI

Cloning Scheme:



ACCN: NM_006566

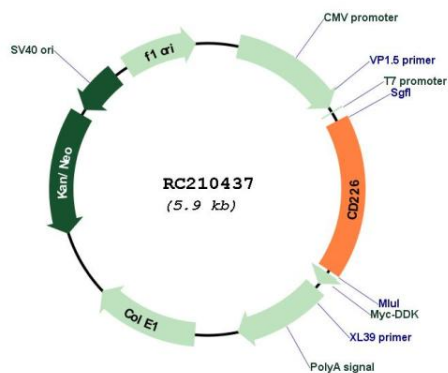
ORF Size: 1008 bp

OTI Disclaimer: Due to the inherent nature of this plasmid, standard methods to replicate additional amounts of DNA in E. coli are highly likely to result in mutations and/or rearrangements. Therefore, OriGene does not guarantee the capability to replicate this plasmid DNA. Additional amounts of DNA can be purchased from OriGene with batch-specific, full-sequence verification at a reduced cost. Please contact our customer care team at custsupport@origene.com or by calling 301.340.3188 option 3 for pricing and delivery.

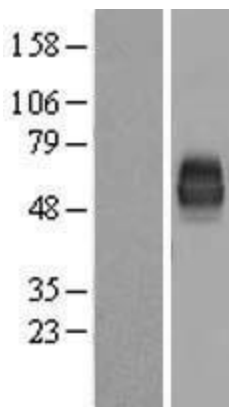
The molecular sequence of this clone aligns with the gene accession number as a point of reference only. However, individual transcript sequences of the same gene can differ through naturally occurring variations (e.g. polymorphisms), each with its own valid existence. This clone is substantially in agreement with the reference, but a complete review of all prevailing variants is recommended prior to use. [More info](#)

OTI Annotation:	This clone was engineered to express the complete ORF with an expression tag. Expression varies depending on the nature of the gene.
Components:	The ORF clone is ion-exchange column purified and shipped in a 2D barcoded Matrix tube containing 10ug of transfection-ready, dried plasmid DNA (reconstitute with 100 ul of water).
Reconstitution Method:	<ol style="list-style-type: none">1. Centrifuge at 5,000xg for 5min.2. Carefully open the tube and add 100ul of sterile water to dissolve the DNA.3. Close the tube and incubate for 10 minutes at room temperature.4. Briefly vortex the tube and then do a quick spin (less than 5000xg) to concentrate the liquid at the bottom.5. Store the suspended plasmid at -20°C. The DNA is stable for at least one year from date of shipping when stored at -20°C.
Note:	Plasmids are not sterile. For experiments where strict sterility is required, filtration with 0.22um filter is required.
RefSeq:	NM_006566.1 , NP_006557.1
RefSeq Size:	2664 bp
RefSeq ORF:	1011 bp
Locus ID:	10666
UniProt ID:	Q15762
Cytogenetics:	18q22.2
Protein Families:	Druggable Genome, Transmembrane
Protein Pathways:	Cell adhesion molecules (CAMs)
MW:	38.6 kDa
Gene Summary:	This gene encodes a glycoprotein expressed on the surface of NK cells, platelets, monocytes and a subset of T cells. It is a member of the Ig-superfamily containing 2 Ig-like domains of the V-set. The protein mediates cellular adhesion of platelets and megakaryocytic cells to vascular endothelial cells. The protein also plays a role in megakaryocytic cell maturation. Alternative splicing results in multiple transcript variants. [provided by RefSeq, Jan 2015]

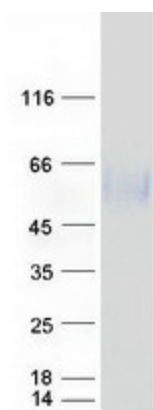
Product images:



Circular map for RC210437



Western blot validation of overexpression lysate (Cat# [LY416555]) using anti-DDK antibody (Cat# [TA50011-100]). Left: Cell lysates from untransfected HEK293T cells; Right: Cell lysates from HEK293T cells transfected with RC210437 using transfection reagent MegaTran 2.0 (Cat# [TT210002]).



Coomassie blue staining of purified CD226 protein (Cat# [TP310437]). The protein was produced from HEK293T cells transfected with CD226 cDNA clone (Cat# RC210437) using MegaTran 2.0 (Cat# [TT210002]).