

Product datasheet for **RC210435**

CCKAR (NM_000730) Human Tagged ORF Clone

Product data:

| | |
|---------------------------|--|
| Product Type: | Expression Plasmids |
| Product Name: | CCKAR (NM_000730) Human Tagged ORF Clone |
| Tag: | Myc-DDK |
| Symbol: | CCKAR |
| Synonyms: | CCK-A; CCK1-R; CCK1R; CCKRA |
| Mammalian Cell Selection: | Neomycin |
| Vector: | pCMV6-Entry (PS100001) |
| E. coli Selection: | Kanamycin (25 ug/mL) |



[View online »](#)

ORF Nucleotide Sequence:

>RC210435 representing NM_000730
 Red=Cloning site Blue=ORF Green=Tags(s)

TTTTGTAATACGACTCACTATAGGGCGGCCGGAATTCGTCGACTGGATCCGGTACCGAGGAGATCTGCC
 GCC**CGGATCGCC**

ATGGATGTGGTTGACAGCCTTCTTGTGAATGGAAGCAACATCACTCCTCCCTGTGAACTCGGGCTCGAAA
 ATGAGACGCTTTTCTGCTTGATCAGCCCGCTCTTCCAAGAGTGGCAGCCAGCGGTGCAGATTCTTT
 GACTCCTTGATATTCTGCTCAGCGTGTGGAAACACGCTGGTCATCACCGTGTGATTTCGGAACAAG
 CGGATGCGGACGGTCACCAACATCTTCTCCTCTCCCTGGCTGTGAGCGACCTCATGCTCTGTCTTTCT
 GCATGCCGTTCAACCTCATCCCCAATCTGCTCAAGGATTCATCTTCGGGAGCGCGTTTGAAGACCAC
 CACCTACTTCATGGGCACCTCTGTGAGTGTATCTACCTTAATCTGGTAGCCATATCTCTAGAGAGAT
 GGTGCGATTTGCAAACCTTACAGTCCCGGTCTGGCAGACAAAATCCCATGCTTTGAAGGTGATTGCTG
 CTACCTGGTGCCTTTCTTTACCATCATGACTCCGTACCCATTATAGCAACTGGTGCCTTTTACCAA
 AAATAACAACCAGACCGGAATATGTGCCGCTTCTACTGCCAAATGATGTTATGCAGCAGTCTGGCAC
 ACATTCCTGTTACTCATCTCTTTCTTATTCTGGAATTGTGATGATGGTGGCATATGGATTAATCTCTT
 TGGAACTCTACCAGGAATAAAATTTGAGGCTAGCCAGAAGAAGTCTGCTAAAGAAAGGAAACCTAGCAC
 CACCAGCAGCGCAAATATGAGGACAGCGATGGGTGTTACCTGCAAAAGACCAGGCCCCCGAGGAAGCTG
 GAGCTCCGGCAGCTGTCCACCGGACGACGAGCAGGCGCAACCGCATCCGGAGTAACAGCTCCGACGCCA
 ACCTGATGGCCAAGAAAAGGGTATCCGCATGCTCATCGTCATCGTGGTCTCTTCTTCTGTGCTGGAT
 GCCCATCTTCAGCGCAAACGCTGGCGGGCCTACGACACCGCTCCGACAGCGCCGCTCTCAGGAACC
 CCCATTTCTTTCATCTCTCTGTCTACACCTCCTCTGCTCAACCCATCATCTACTGCTTCATGA
 ACAACGCTTCCGCTCGGCTTCATGGCCACCTTCCCCTGCTGCCCAATCCTGGTCCCCAGGGGCGAG
 GGGAGAGGTGGGGAGGAGGAGGAAGGCGGACCACAGGAGCCTCTGTCCAGGTTCTCGTACAGCCAT
 ATGAGTGCCTCGGTGCCACCCAG

ACGCGTACGCGGCCGCTCGAGCAGAACTCATCTCAGAAGAGGATCTGGCAGCAAATGATATCCTGGATT
 ACAAGGATGACGACGATAAGGTTTAA

Protein Sequence:

>RC210435 representing NM_000730
 Red=Cloning site Green=Tags(s)

MDVVDSLLVNGSNITPPCELGLENETLFCLDQPRPSKEWQPAVQILLYSLIFLLSVLGNLTVITLIRNK
 RMRTVTNIFLLSLAVSDLMLCLFCMPFNLIPNLLKDFIFGSAVCKTTTYFMGTSVSVSTFNLVAISLERY
 GAICKPLQSRVWQTKSHALKVIAATWCLSFTIMTPYPIYSNLVPFTKNNQNTANMCRFLLPNDVMQQSWH
 TFLLLILFLIPGIVMMVAYGLISLELYQGIKFEASQKSAKERKPSSTSSGKYEDSDGCYLQKTRPPRKL
 ELRQLSTGSSSRANRIRSNSSAANLMAKKRVIRMLIVIVVLFFLCWPIFSANAWRAYDTASAERRLSGT
 PISFILLLSYTSVCNPIIYCFMNRFRFLGFMATFPCCPNPGPPGARGEVGEIEEGGTTGASLSRFSYSH
 MSASVPPQ

TRTRPLEQ**KL**ISEEDLAANDILDYKDDDDKV

Chromatograms:

https://cdn.origene.com/chromatograms/mg2730_h05.zip

Restriction Sites:

Sgfl-Mlul

Cloning Scheme:


ACCN: NM_000730

ORF Size: 1284 bp

OTI Disclaimer: The molecular sequence of this clone aligns with the gene accession number as a point of reference only. However, individual transcript sequences of the same gene can differ through naturally occurring variations (e.g. polymorphisms), each with its own valid existence. This clone is substantially in agreement with the reference, but a complete review of all prevailing variants is recommended prior to use. [More info](#)

OTI Annotation: This clone was engineered to express the complete ORF with an expression tag. Expression varies depending on the nature of the gene.

Components: The ORF clone is ion-exchange column purified and shipped in a 2D barcoded Matrix tube containing 10ug of transfection-ready, dried plasmid DNA (reconstitute with 100 ul of water).

Reconstitution Method:

1. Centrifuge at 5,000xg for 5min.
2. Carefully open the tube and add 100ul of sterile water to dissolve the DNA.
3. Close the tube and incubate for 10 minutes at room temperature.
4. Briefly vortex the tube and then do a quick spin (less than 5000xg) to concentrate the liquid at the bottom.
5. Store the suspended plasmid at -20°C. The DNA is stable for at least one year from date of shipping when stored at -20°C.

RefSeq: [NM_000730.3](#)

RefSeq Size: 1682 bp

RefSeq ORF: 1287 bp

Locus ID: 886

UniProt ID: [P32238](#)

Cytogenetics: 4p15.2

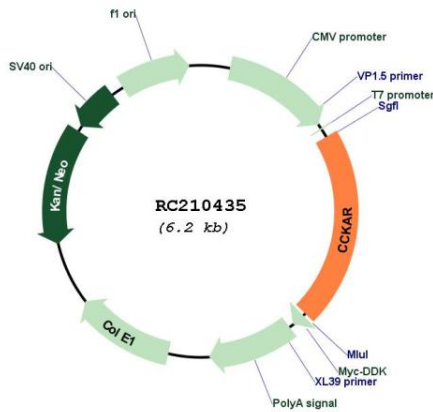
Protein Families: Druggable Genome, Transmembrane

Protein Pathways: Calcium signaling pathway, Neuroactive ligand-receptor interaction

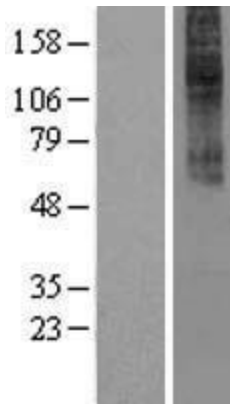
MW: 47.7 kDa

Gene Summary: This gene encodes a G-protein coupled receptor that binds non-sulfated members of the cholecystokinin (CCK) family of peptide hormones. This receptor is a major physiologic mediator of pancreatic enzyme secretion and smooth muscle contraction of the gallbladder and stomach. In the central and peripheral nervous system this receptor regulates satiety and the release of beta-endorphin and dopamine. [provided by RefSeq, Jul 2008]

Product images:



Circular map for RC210435



Western blot validation of overexpression lysate (Cat# [LY424542]) using anti-DDK antibody (Cat# [TA50011-100]). Left: Cell lysates from untransfected HEK293T cells; Right: Cell lysates from HEK293T cells transfected with RC210435 using transfection reagent MegaTran 2.0 (Cat# [TT210002]).