

Product datasheet for RC210428L3

beta 3 Adrenergic Receptor (ADRB3) (NM_000025) Human Tagged Lenti ORF Clone

Product data:

Product Type:	Expression Plasmids
Product Name:	beta 3 Adrenergic Receptor (ADRB3) (NM_000025) Human Tagged Lenti ORF Clone
Tag:	Myc-DDK
Symbol:	beta 3 Adrenergic Receptor
Synonyms:	BETA3AR
Mammalian Cell Selection:	Puromycin
Vector:	pLenti-C-Myc-DDK-P2A-Puro (PS100092)
E. coli Selection:	Chloramphenicol (34 ug/mL)
ORF Nucleotide Sequence:	The ORF insert of this clone is exactly the same as(RC210428).
Restriction Sites:	SgfI-MluI
Cloning Scheme:	

Cloning sites used for ORF Shuttling:



* The last codon before the Stop codon of the ORF.

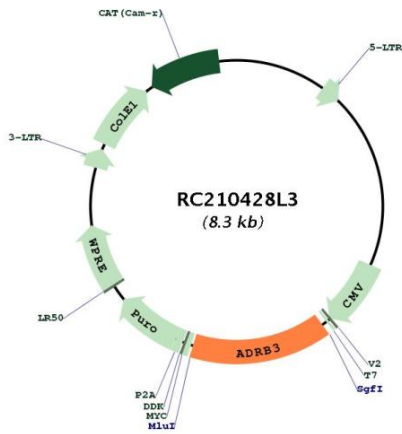
ACCN:	NM_000025
ORF Size:	1224 bp



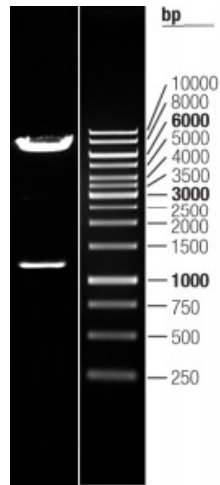
[View online »](#)

OTI Disclaimer:	The molecular sequence of this clone aligns with the gene accession number as a point of reference only. However, individual transcript sequences of the same gene can differ through naturally occurring variations (e.g. polymorphisms), each with its own valid existence. This clone is substantially in agreement with the reference, but a complete review of all prevailing variants is recommended prior to use. More info
OTI Annotation:	This clone was engineered to express the complete ORF with an expression tag. Expression varies depending on the nature of the gene.
Components:	The ORF clone is ion-exchange column purified and shipped in a 2D barcoded Matrix tube containing 10ug of transfection-ready, dried plasmid DNA (reconstitute with 100 ul of water).
Reconstitution Method:	<ol style="list-style-type: none">1. Centrifuge at 5,000xg for 5min.2. Carefully open the tube and add 100ul of sterile water to dissolve the DNA.3. Close the tube and incubate for 10 minutes at room temperature.4. Briefly vortex the tube and then do a quick spin (less than 5000xg) to concentrate the liquid at the bottom.5. Store the suspended plasmid at -20°C. The DNA is stable for at least one year from date of shipping when stored at -20°C.
RefSeq:	NM_000025.1
RefSeq Size:	2660 bp
RefSeq ORF:	1227 bp
Locus ID:	155
UniProt ID:	P13945
Cytogenetics:	8p11.23
Protein Families:	Druggable Genome, GPCR, Transmembrane
Protein Pathways:	Calcium signaling pathway, Endocytosis, Neuroactive ligand-receptor interaction
MW:	43.5 kDa
Gene Summary:	The protein encoded by this gene belongs to the family of beta adrenergic receptors, which mediate catecholamine-induced activation of adenylate cyclase through the action of G proteins. This receptor is located mainly in the adipose tissue and is involved in the regulation of lipolysis and thermogenesis. Obesity and bodyweight-related disorders are correlated with certain polymorphisms in three subtypes of beta-adrenoceptor, among them, the ADRB3 gene.[provided by RefSeq, Oct 2019]

Product images:



Circular map for RC210428L3



Double digestion of RC210428L3 using SgfI and MluI