

Product datasheet for **RC210424**

LZTS1 (NM_021020) Human Tagged ORF Clone

Product data:

Product Type:	Expression Plasmids
Product Name:	LZTS1 (NM_021020) Human Tagged ORF Clone
Tag:	Myc-DDK
Symbol:	LZTS1
Synonyms:	F37; FEZ1
Mammalian Cell Selection:	Neomycin
Vector:	pCMV6-Entry (PS100001)
E. coli Selection:	Kanamycin (25 ug/mL)



[View online »](#)

ORF Nucleotide Sequence:

>RC210424 representing NM_021020
 Red=Cloning site Blue=ORF Green=Tags(s)

TTTTGTAATACGACTCACTATAGGGCGGCCGGGAATTCGTCGACTGGATCCGGTACCGAGGAGATCTGCC
 GCC**CGGATCGCC**

ATGGGCAGCGTCAGTAGCCTCATCTCCGGCCACAGCTTCCACAGCAAGCACTGCCGGCTTCGAGTACA
 AGCTGCGCAAGTCTCCACCTCAAGAAGCTCAACCGGTATTCCGACGGGCTGCTGAGGTTGGCTTCTC
 CCAGGACTCCGGTCACGGCAAGTCCAGCTCCAAAATGGGCAAGAGCGAAGACTTCTTCTACATCAAGGTC
 AGCCAGAAAGCCCGGGGCTCCCATCACCCAGATTACACGGCACTGTCCAGCGGGATTTAGGGGGCCAGG
 CTGGGGTGGACTTTGACCCGTCCACACCCCAAGCTCATGCCCTTCTCCAATCAGCTAGAAATGGGCTC
 CGAGAAGGTTGAGTGGGCCACAGCCTTCAAGCCTGTGCTGCCACGGTCAGGAGCCATCTGCACTCC
 TCCCCGGAGAGTGCCAGCCACCAGCTGCACCCCGCCCTCCAGACAAGCCCAAGGAGCAGGAGCTGAAGC
 CTGGCCTGTGCTCTGGGCGCTGTGAGCTCCGGCCGGAATCCATGTCCAGCCTGCCACACACAGCAC
 CAGCAGCAGCTACCAGCTGGACCCGCTGGTCACACCCGTGGGACCCACAAGCCGTTTTGGGGCTCCGCC
 CACAACATCACCCAGGGCATCGTCTCCAGGACAGCAACATGATGAGCCTGAAGGCTCTGTCTTCTCCG
 ACGGAGGTAGCAAGCTGGGCCACTCGAACAAAGGCAGACAAGGGCCCTCGTGTGTCCGCTCCCCATCTC
 CACGGACGAGTGCAGCATCCAGGAGCTGGAGCAGAAGCTGTTGGAGAGGGAGGGCGCCCTCCAGAAGCTG
 CAGCGCAGCTTTGAGGAGAAGGAGCTTGCTCCAGCCTGGCCTACGAGGAGCGGCCGCGGCTGCAGGG
 ACGAGCTGGAGGGCCCGAGCCAAAGGCGGCAACAAGCTCAAGCAGGCTCGCAGAAGAGCCAGCGCGC
 GCAGCAGTCTGCACCTGCAGTACTGCAGCTTACAGGAGAGAAGCGGAGCTCCGGCAGGAGCTCGAG
 AGCCTCATGAAGGAGCAGGACCTGCTGGAGACCAAGCTCAGGTCCTACGAGAGGGAGAAGACCAGCTTCG
 GCCCCGCGCTGGAGGAGACCCAGTGGGAGGTGTGCCAGAAGTCAGGCGAGATCTCCTCTGAAGCAGCA
 GCTGAAGGAGTCCAGACGGAGGTGAACGCCAAGGCTAGCGAGATCCTGGGTCTCAAGGCACAGCTGAAG
 GACACGCGGGGCAAGCTGGAGGGCTGGAGCTGAGGACCCAGGACCTGGAGGGCGCCCTGCGCACCAAGG
 GCCTGGAGCTGGAGTCTGTGAGAATGAGCTGCAGCGCAAGAAGAAGCAGGCGGAGCTGTGCGGGAGAA
 GGTGAACCTGCTGGAGCAGGAGCTGCAGGAGCTGCGGGCCAGGCCGCGCTGGCCCGGACATGGGGCCG
 CCCACCTTCCCCGAGGACGCTCCCTGCCCTGCAGCGGGAGCTGGAGCGGCTGCGGGCCGAGCTGCGGGAGG
 AGCGGCAAGGCCATGACCAGATGTCTCGGCTCCAGCATGAGCGGCTCGTGTGAAGGAGGAGAAGGA
 GAAGGTGATTAGTACCAGAAACAGCTGCAGCAGAGCTACGTGGCCATGTACCAGCGGAACCAGCGCCTG
 GAGAAGGCCCTGCAGCAGCTGGCACGTGGGACAGCGCCGGGAGCCCTGGAGGTTGACCTGGAAGGGG
 CTGACATCCCCTACGAGGACATCATAGCCACTGAGATC

ACGCGTACGCGGCGGCTCGAGCAGAAACTCATCTCAGAAGAGGATCTGGCAGCAAATGATATCCTGGATT
 ACAAGGATGACGACGATAAGGTTTAA

Protein Sequence:

>RC210424 representing NM_021020
 Red=Cloning site Green=Tags(s)

MGSVSSLISGHSFHSKHCRAASQYKLRKSSHLKLNRYSDGLLRFQDSGSHGKSSSKMGKSEDFYIKV
 SQKARGSHHPDYALSSGDLGGQAGVDFDPSTPPKLMFQSNQLEMSEKGAVRPTAFKPVLPKRSAILHS
 SPESASHQLHPAPPDKPKEQELKPLCSGALSDSGRNSMSSLPTHSTSSSYQLDPLVTPVGPTSRFGGSA
 HNITQGIIVLQDSNMMSLKALSFSDGSKLGHNSKADKGPSCVRSPISTDECSIQELEREGALQKL
 QRSFEEKELASSLAYEERPRRCRDELEGPEPKGNKQASQKSQRAQQVHLQVLQLQEQKRQLRQLE
 SLMKEQDLELTKLSYEREKTSFGPALEETQWEVCQKSGEISLLKQQLKESQTEVNAKASEILGLKAQLK
 DTRGKLEGLRLTQDLEGALRTKLELEVCENELQRKKNEAELLREKVNILLEQELQELRAQAALARMGP
 PTFPEDVPALQRELERLRAELREERQGHQDMSGFQHERLVWKEEKEKVIQYQKQLQSSYVAMYQRNQR
 EKALQQLARGDSAGEPLEVDLEGADIPYEDIATEI

TRTRPLEQKLISEEDLAANDILDYKDDDDKV

Chromatograms:

https://cdn.origene.com/chromatograms/mg2817_f05.zip

Restriction Sites: SgfI-MluI

Cloning Scheme:



ACCN: NM_021020

ORF Size: 1788 bp

OTI Disclaimer: The molecular sequence of this clone aligns with the gene accession number as a point of reference only. However, individual transcript sequences of the same gene can differ through naturally occurring variations (e.g. polymorphisms), each with its own valid existence. This clone is substantially in agreement with the reference, but a complete review of all prevailing variants is recommended prior to use. [More info](#)

OTI Annotation: This clone was engineered to express the complete ORF with an expression tag. Expression varies depending on the nature of the gene.

Components: The ORF clone is ion-exchange column purified and shipped in a 2D barcoded Matrix tube containing 10ug of transfection-ready, dried plasmid DNA (reconstitute with 100 ul of water).

- Reconstitution Method:**
1. Centrifuge at 5,000xg for 5min.
 2. Carefully open the tube and add 100ul of sterile water to dissolve the DNA.
 3. Close the tube and incubate for 10 minutes at room temperature.
 4. Briefly vortex the tube and then do a quick spin (less than 5000xg) to concentrate the liquid at the bottom.
 5. Store the suspended plasmid at -20°C. The DNA is stable for at least one year from date of shipping when stored at -20°C.

RefSeq: [NM_021020.5](#)

RefSeq Size: 5492 bp

RefSeq ORF: 1791 bp

Locus ID: 11178

UniProt ID: [Q9Y250](#)

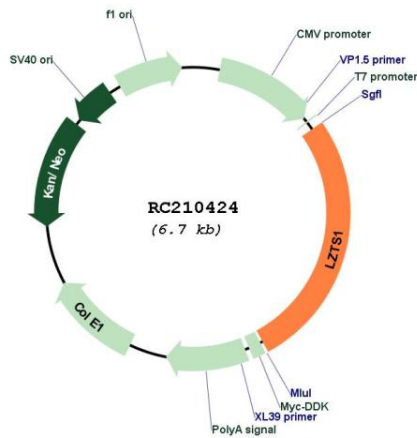
Cytogenetics: 8p21.3

Protein Families: Druggable Genome

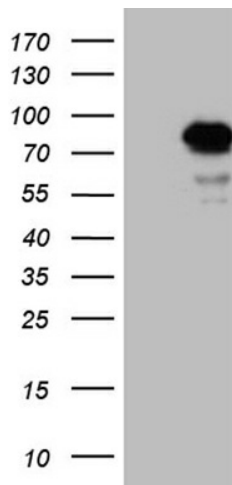
MW: 66.4 kDa

Gene Summary: This gene encodes a tumor suppressor protein that is ubiquitously expressed in normal tissues. In uveal melanomas, expression of this protein is silenced in rapidly metastasizing and metastatic tumor cells but has normal expression in slowly metastasizing or nonmetastasizing tumor cells. This protein may have a role in cell-cycle control by interacting with the Cdk1/cyclinB1 complex. This gene is located on chromosomal region 8p22. Loss of heterozygosity (LOH) in the 8p arm is a common characteristic of many types of cancer. [provided by RefSeq, Nov 2009]

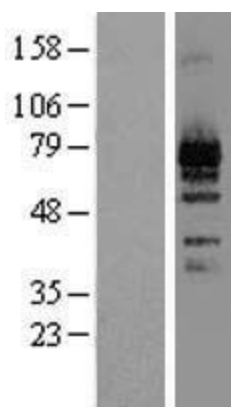
Product images:



Circular map for RC210424



HEK293T cells were transfected with the pCMV6-ENTRY control (Cat# [PS100001], Left lane) or pCMV6-ENTRY LZTS1 (Cat# RC210424, Right lane) cDNA for 48 hrs and lysed. Equivalent amounts of cell lysates (5 ug per lane) were separated by SDS-PAGE and immunoblotted with anti-LZTS1 (Cat# [TA810241])(1:2000). Positive lysates [LY412145] (100ug) and [LC412145] (20ug) can be purchased separately from OriGene.



Western blot validation of overexpression lysate (Cat# [LY412145]) using anti-DDK antibody (Cat# [TA50011-100]). Left: Cell lysates from untransfected HEK293T cells; Right: Cell lysates from HEK293T cells transfected with RC210424 using transfection reagent MegaTran 2.0 (Cat# [TT210002]).