

## Product datasheet for **RC210422**

### 5HT6 Receptor (HTR6) (NM\_000871) Human Tagged ORF Clone

#### Product data:

Product Type:	Expression Plasmids
Product Name:	5HT6 Receptor (HTR6) (NM_000871) Human Tagged ORF Clone
Tag:	Myc-DDK
Symbol:	5HT6 Receptor
Synonyms:	5-HT6; 5-HT6R
Mammalian Cell Selection:	Neomycin
Vector:	pCMV6-Entry (PS100001)
E. coli Selection:	Kanamycin (25 ug/mL)



[View online »](#)

**ORF Nucleotide Sequence:**

>RC210422 ORF sequence  
 Red=Cloning site Blue=ORF Green=Tags(s)

TTTTGTAATACGACTCACTATAGGGCGGCCGGGAATTCGTCGACTGGATCCGGTACCGAGGAGATCTGCC  
 GCC**CGGATCGCC**

ATGGTCCCAGAGCCGGGCCAACCCGCAATAGCACCCCGCCTGGGGGGCAGGGCCCGCTCGGCCCGG  
 GGGCAGCGGCTGGGTGGCGGCCGCGCTGTGCGTGGTCATCGCGCTGACGGCGGCCAACTCGCTGCT  
 GATCGCGCTCATCTGCACTCAGCCCGCGCTGCGCAACACGTCCAACCTTCTCCTGGTGCTGCTCTTCAAG  
 TCTGACCTGATGGTGGGCTGGTGGTATGCCCGGCCATGCTGAACGCGCTGTACGGCGCTGGGTGC  
 TGGCGCGGCCCTCTGCCTGCTCTGGACCCTTCGACGTGATGTGCTGCAGCGCTCCATCCTCAACCT  
 CTGCCTCATCAGCTGGACCGCTACCTGCTCATCTCTCGCCGCTGCGCTACAAGCTGCGCATGACGCC  
 CTGCGTGCCTGGCCCTAGTCTGGGCGCTGGAGCTCGCCGCTCTCGCTCCTTCTGCCCTGCTGC  
 TGGGCTGGCAGAGCTGGCCACGCACGCCACCCGTCCTGGCCAGTGGCGCTGCTGGCCAGCCTGCC  
 TTTTGTCTTGTGGCGTGGGCCTCACCTTCTTCTGCCCTCGGGTGCATATGCTTCACTACTGCAGG  
 ATCCTGTAGTCCCGCAAGCAGGCCGTGCAGGTGGCCTCCCTACCACCGGCATGGCCAGTCAAGCCT  
 CGGAGACGCTGCAGGTGCCAGGACCCACGCCAGGGGTGGAGTCTGCTGACAGCAGGCGTCTAGCCAC  
 GAAGCACAGCAGGAAGGCCCTGAAGGCCAGCCTGACGCTGGGCATCCTGTGGGCATGTTCTTTGTGACC  
 TGGTTGCCCTTCTTTGTGGCCAACATAGTCCAGGCCGTGTGCGACTGCATCTCCCAGGCCCTTTCGATG  
 TCCTCACATGGCTGGGTTACTGTAAACAGCACCATGAACCCCATCATCTACCCACTCTTATGCGGGACTT  
 CAAGCGGGCGCTGGGCAGGTTCTGCCATGTCCACGCTGTCCCGGGAGCGCCAGGCCAGCCTGGCCTCG  
 CCATCATGCGCACCTCTCACAGCGGCCCGGCCCGCCTTAGCCTACAGCAGGTGCTGCCGCTGCCCC  
 TGCCGCGGACTCAGATTCCGACTCAGACGCAGGCTCAGGCGGCTCCTCGGGCTGCGGCTCACGGCCCA  
 GCTGCTGCTTCTGGCGAGGCCACCCAGGACCCCGCTGCCACCCAGGGCGCTGCCGCGCTCAATTTCT  
 TCAACATCGACCCCGGAGCCCGAGCTGCGGCCGATCCACTTGGCATCCCCACGAAC

**ACGCGT**ACGCGGCCGCTCGAGCAGAACTCATCTCAGAAGAGGATCTGGCAGCAATGATATCCTGGATT  
 ACAAGGATGACGACGATAAGGTTTAA

**Protein Sequence:**

>RC210422 protein sequence  
 Red=Cloning site Green=Tags(s)

MVPEPGPTANSTPAWGAGPPSAPGGSGWAAALCVVIALTAAANSLLIALICTQPALRNTSNFFLVSLFT  
 SDLMVGLVVMPPAMLNLYGRWVLARGLLWTFDVMCCSASILNLCISLDRYLLILSPLRYKLRMTP  
 LRALALVLGAWSLAALASFLPLLLGWHELGHARPPVPGQCRLASLPFVLVASGLTFFLPSGAICFTYCR  
 ILLAARKQAVQVASLTTGMASQASETLQVPRTPRPGVESADSRRLATKHSRKALKASLTGILLGMFFVT  
 WLPFFVANIVQAVCDICISPLFDVLTWLYGCNSTMNPIIYPLFMRDFKRALGRFLPCPRCPRERQASLAS  
 PSLRTSHSGPRPGLSLQVPLPLPPDSDSDSDAGSGGSSGLRLTAQLLLPGEATQDPPLPTRAAAANVF  
 FNIDPAEPELRPHPLGIPTN

**TR**TRPLEQKLISEEDLAANDILDYKDDDDKV

**Chromatograms:**

[https://cdn.origene.com/chromatograms/mk6007\\_h11.zip](https://cdn.origene.com/chromatograms/mk6007_h11.zip)

**Restriction Sites:**

Sgfl-Mlul

**Cloning Scheme:**


**ACCN:** NM\_000871

**ORF Size:** 1320 bp

**OTI Disclaimer:** The molecular sequence of this clone aligns with the gene accession number as a point of reference only. However, individual transcript sequences of the same gene can differ through naturally occurring variations (e.g. polymorphisms), each with its own valid existence. This clone is substantially in agreement with the reference, but a complete review of all prevailing variants is recommended prior to use. [More info](#)

**OTI Annotation:** This clone was engineered to express the complete ORF with an expression tag. Expression varies depending on the nature of the gene.

**Components:** The ORF clone is ion-exchange column purified and shipped in a 2D barcoded Matrix tube containing 10ug of transfection-ready, dried plasmid DNA (reconstitute with 100 ul of water).

- Reconstitution Method:**
1. Centrifuge at 5,000xg for 5min.
  2. Carefully open the tube and add 100ul of sterile water to dissolve the DNA.
  3. Close the tube and incubate for 10 minutes at room temperature.
  4. Briefly vortex the tube and then do a quick spin (less than 5000xg) to concentrate the liquid at the bottom.
  5. Store the suspended plasmid at -20°C. The DNA is stable for at least one year from date of shipping when stored at -20°C.

**RefSeq:** [NM\\_000871.3](#)

**RefSeq Size:** 3427 bp

**RefSeq ORF:** 1323 bp

**Locus ID:** 3362

**UniProt ID:** [P50406](#)

**Cytogenetics:** 1p36.13

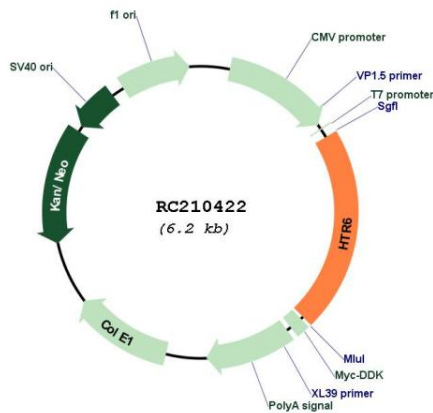
**Protein Families:** Druggable Genome, GPCR, Transmembrane

**Protein Pathways:** Calcium signaling pathway, Neuroactive ligand-receptor interaction

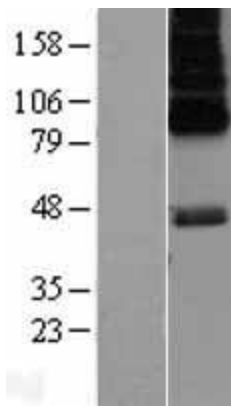
**MW:** 47 kDa

**Gene Summary:** This gene encodes a protein that belongs to the seven-transmembrane G protein-coupled receptor family of proteins. The encoded protein couples with the Gs alpha subunit and stimulates adenylate cyclase to activate the cyclic AMP-dependent signaling pathway. This receptor is thought to regulate cholinergic neuronal transmission in the brain. Several antidepressants and antipsychotic drugs have a high affinity for this receptor. [provided by RefSeq, Aug 2013]

**Product images:**



Circular map for RC210422



Western blot validation of overexpression lysate (Cat# [LY400308]) using anti-DDK antibody (Cat# [TA50011-100]). Left: Cell lysates from untransfected HEK293T cells; Right: Cell lysates from HEK293T cells transfected with RC210422 using transfection reagent MegaTran 2.0 (Cat# [TT210002]).