

## Product datasheet for **RC210416**

### **PDE7B (NM\_018945) Human Tagged ORF Clone**

#### **Product data:**

Product Type:	Expression Plasmids
Product Name:	PDE7B (NM_018945) Human Tagged ORF Clone
Tag:	Myc-DDK
Symbol:	PDE7B
Synonyms:	bA472E5.1
Mammalian Cell Selection:	Neomycin
Vector:	pCMV6-Entry (PS100001)
E. coli Selection:	Kanamycin (25 ug/mL)



[View online »](#)

**ORF Nucleotide Sequence:**

>RC210416 ORF sequence  
 Red=Cloning site Blue=ORF Green=Tags(s)

TTTTGTAATACGACTCACTATAGGGCGGCCGGGAATTCGTGACTGGATCCGGTACCGAGGAGATCTGCC  
 GCC**CGATCGCC**

ATGTCCTTGTTTAATGGTTGAGAGGTGTGGCGAAATCTTGTTTGAGAACCCCGATCAGAATGCCAAATGTG  
 TTTGCATGCTGGGAGATATACGACTAAGGGGTACAGCGGGGTTCTGTGCTGAACGCCGTGGCTCCTACCC  
 ATTCATTGACTTCCGCCTACTTAACAGTACAACATACTCAGGGGAGATTGGCACCAAGAAAAAGGTGAAA  
 AGACTATTAAGCTTTCAAAGATACTTCCATGCATCAAGGCTGCTTCGTGGAATTATACCACAAGCCCTC  
 TGCACCTGCTGGATGAAGACTACCTTGGACAAGCAAGGCATATGCTCTCCAAAGTGGAAATGTGGGATTT  
 TGACATTTTCTTGTGATCGTTGACAAATGGAAACAGCCTGGTAACACTGTTGTGCCACCTCTTCAAT  
 ACCCATGGACTCATTACCATTTCAAGTTAGATATGGTGACCTTACACCGATTTTAGTCATGGTTCAAG  
 AAGATTACCACAGCCAAAACCCGTATCACAATGCTGTTACGCAGCCGACGTACCCAGGCCATGCACTG  
 CTACCTGAAAGAGCCAAAGCTTGGCAGCTTCTCAGCCTCTGGACATCATGCTTGGACTGCTGGCTGCA  
 GCAGCACAGATGTGGACCACCCAGGGTGAACAGCCATTTTGTATAAAAATAACACCATCTTGCAA  
 ACCTATATCAGAATATGTCTGTGCTGGAGAATCATCACTGGCGATCTACAATTGGCATGCTTCGAGAATC  
 AAGCTTCTTGCTCATTGCAAAGGAAATGACACAGGATATTGAACAGCAGCTGGGCTCCTTGATCTTG  
 GCAACAGACATCAACAGGCAGAAATGAATTTTGGACAGATTGAAAGCTCACCTCCACAATAAAGACTTAA  
 GACTGGAGGATGCACAGGACAGGCATTTATGCTTCAGATCGCCTTGAAGTGTGCTGACATTTGCAATCC  
 TTGTAGAATCTGGGAGATGAGCAAGCAGTGGAGTGAAGGGTCTGTGAAGAATTCTACAGGCAAGGTGAA  
 CTTGAACAGAAATTTGAACTGGAATCAGTCCTCTTTGTAATCAACAGAAAGATTCCATCCCTAGTATAC  
 AAATTGGTTTCATGAGCTACATCGTGGAGCCGCTCTCCGGGAATGGGCCATTTACGGGTAACAGCAC  
 CCTGTGCGAGAACATGCTGGGCCACCTCGCACACAACAAGGCCAGTGAAGAGCCTGTTGCCACAGGCAG  
 CACAGAAGCAGGGCAGCAGTGGCAGCGGGCTGACCACGACCACGCAGGCCAAGGGACTGAGAGCGAGG  
 AGCAGGAAGGCGACAGCCCC

**ACGCGT**ACGCGGCCGCTCGAGCAGAACTCATCTCAGAAGAGGATCTGGCAGCAAATGATATCCTGGATT  
 ACAAGGATGACGACGATAAGGTTTAA

**Protein Sequence:**

>RC210416 protein sequence  
 Red=Cloning site Green=Tags(s)

MSCLMVERCGEILFENPDQNAKVCMLGDIRLRGQTVRAERRGSYPFIDFRLLNSTTYSGEIGTKKKVK  
 RLLSFQRYFHASRLLRGIIPQAPLHLLDEDYLGQARHMLSKVGMWDFDIFLFDRLTNGNSLVTLLCHLFN  
 THGLIHFFKLDLMTLHRFLVMVQEDYHSQNPYHNAVHAADVTQAMHCYLKEPKLASFLTPLDIMLGLLAA  
 AAHDVDHPGVNQPFLIKTNHHLANLYQNMSVLENHHWRSTIGMLRESRLLAHLPKEMTQDIEQQLGSLIL  
 ATDINRQNEFLTRLKAHLHNKDLRLEDAQDRHFMLQIALKCADICNPCR IWEMSKQWSERVEEFYRQGE  
 LEQKFELEISPLCNQQKDSIPSIQIGFMSYIVEPLFREWAHFTGNSTLSENMLGHLAHNKAQWKSLLPRQ  
 HRSRGSSGSPDHDHAGQGTESEEQEGDSP

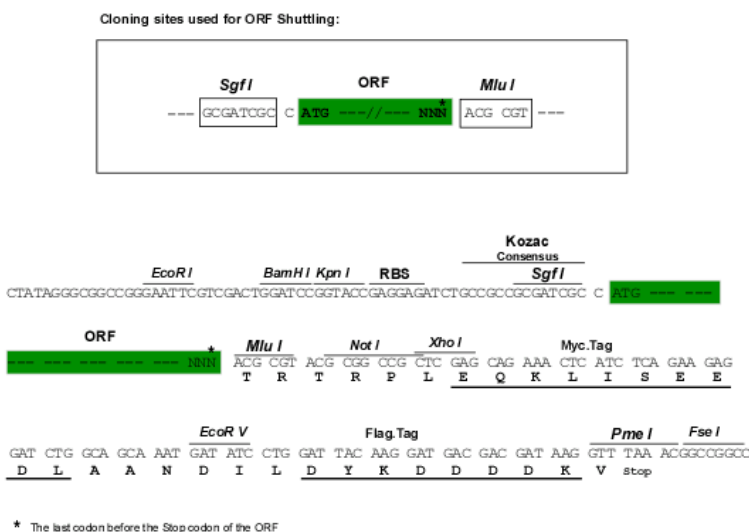
**TR**TRPLEQKLISEEDLAANDILDYKDDDDKV

**Chromatograms:**

[https://cdn.origene.com/chromatograms/mk6137\\_f02.zip](https://cdn.origene.com/chromatograms/mk6137_f02.zip)

**Restriction Sites:**

Sgfl-Mlul

**Cloning Scheme:**


**Domains:** PDEase, HDc

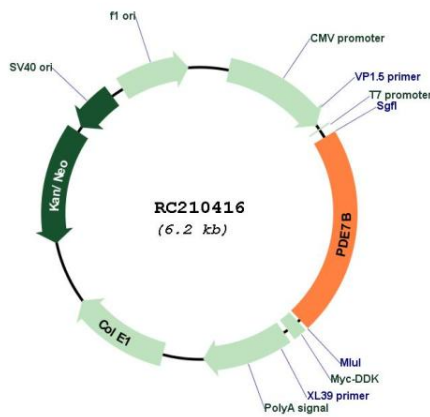
**Protein Families:** Druggable Genome

**Protein Pathways:** Progesterone-mediated oocyte maturation, Purine metabolism

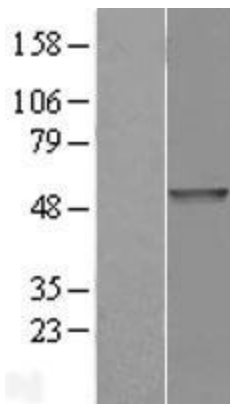
**MW:** 51.8 kDa

**Gene Summary:** The 3',5'-cyclic nucleotides cAMP and cGMP function as second messengers in a wide variety of signal transduction pathways. 3',5'-cyclic nucleotide phosphodiesterases (PDEs) catalyze the hydrolysis of cAMP and cGMP to the corresponding 5'-monophosphates and provide a mechanism to downregulate cAMP and cGMP signaling. This gene encodes a cAMP-specific phosphodiesterase, a member of the cyclic nucleotide phosphodiesterase family.[provided by RefSeq, Apr 2009]

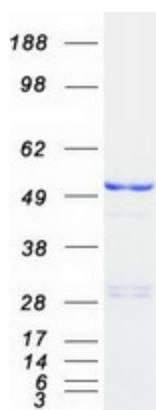
**Product images:**



Circular map for RC210416



Western blot validation of overexpression lysate (Cat# [LY402727]) using anti-DDK antibody (Cat# [TA50011-100]). Left: Cell lysates from untransfected HEK293T cells; Right: Cell lysates from HEK293T cells transfected with RC210416 using transfection reagent MegaTran 2.0 (Cat# [TT210002]).



Coomassie blue staining of purified PDE7B protein (Cat# [TP310416]). The protein was produced from HEK293T cells transfected with PDE7B cDNA clone (Cat# RC210416) using MegaTran 2.0 (Cat# [TT210002]).