

## Product datasheet for **RC210414**

### **RAB11 FIP2 (RAB11FIP2) (NM\_014904) Human Tagged ORF Clone**

#### **Product data:**

Product Type:	Expression Plasmids
Product Name:	RAB11 FIP2 (RAB11FIP2) (NM_014904) Human Tagged ORF Clone
Tag:	Myc-DDK
Symbol:	RAB11 FIP2
Synonyms:	nRip11; Rab11-FIP2
Mammalian Cell Selection:	Neomycin
Vector:	pCMV6-Entry (PS100001)
E. coli Selection:	Kanamycin (25 ug/mL)



[View online »](#)

**ORF Nucleotide Sequence:**

>RC210414 ORF sequence  
 Red=Cloning site Blue=ORF Green=Tags(s)

TTTTGTAATACGACTCACTATAGGGCGGCCGGAATTCGTCGACTGGATCCGGTACCGAGGAGATCTGCC  
 GCC**CGGATCGCC**

ATGATGCTGTCCGAGCAAGCCAAAAGTGGTTTCCAACCCACGTGCAGGTCACAGTGCTCCAAGCCAAAG  
 ATCTGAAGCCAAAAGGCCAAAAGTGGTACCAATGACACATACACTATAATTCAGCTGGGCAAGGAAAAGTA  
 CTCACCTCTGTAGCTGAGAAAACCTTGTAGCCAGTTTGAAGGAGGAGGCCTCTTTCGAGCTACCTGGA  
 TTGCTAATTCAGGGAAGTCCAGAGAAATACATTCTTTTCTTATAGTTATGCACAGGTCCTGGTGGGTC  
 TGGATAAATTTTAGGGCAGGTGGCAATCAATCTCAATGACATCTTTGAGGACAAACAAAGAAGGAAAAC  
 AGAGTGGTTTAGATTAGAATCCAAACAAGGAAAACGAATCAAAAACAGGGGTGAGATAAAGGTCAATATT  
 CAGTTTATGAGGAACAATATGACCGCAAGTATGTTTGACTTATCAATGAAGGACAAAACAGATCTCCTT  
 TTGCAAAGTTAAAAGATAAGATGAAGGGTAGAAAAATGATGGAACATTTCTGATACGCTTCTGCAAT  
 CATTCCAAGTACTCACATGCCCGATGCCAATAGTGAATTTCAAGTGGTAAAATACAGATGAAATCCAAA  
 CCAAAAAAGCCTTTTCTCTTGGGTCTCAGCGACTCTCGTCAGCGCATTCAATGTCTGATTTATCTGGGT  
 CCCATATGTCTTCTGAGAACTGAAGGCTGGCACCATAGGTCAAACACATCTTCTCGGACACCAGTTAGA  
 TTCTTTTGAACAGTTCAGAAAAGTGAAGTCTCAATCTCCACACAGAAGAACATTAAGCTTTGATACT  
 TCTAAAATGAACCAACCTGACAGCATTGTGGATGAAGGTGAATTTGTTTCGGAAGACAAAATGACCCAT  
 TTACAAATGTGACTGCTTATTACCCCAAAAATTTGCAACTGCCAAGGAAGAAAAATCCATTTGAAGA  
 AAGCAGCGAAACATGGGACAGCAGCATGAATTTATTTCAAACCAATTGAAATAAGAAAAGAAAATAAA  
 AGAGAGAAAAGGGAGAAAGTTAGCCTGTTTGAAGAGTGACTGGAAAAAAGATAGCAGAAGATCTGATA  
 AACTTAAACAATGGGGATCTGATAGCCCTGTGACTTGAATCACCTAATGCATTTAGTAAAAATCGCCA  
 GGACTATTTTGTATGAGTCAACCAATCCATTTACAGCAAAAATTCAGGGCTTCAAATATAATGCCATCT  
 TCAAGTTTTCATATGAGTCCAACAAGCAATGAAGACCTCAGGAAAATCCCGGACGCAACCCCTTTGATG  
 CCACTGCAGGGTATCGTAGTCTGACCTATGAAGAGTTCTACAGGAGCTGGTGAACACAAAAGAACTCCT  
 TAGGAGGAAAGACACCCACATCCGGAACTCGAGGACTACATCGACAACCTCCTTGAAGGGTAATGGAA  
 GAAACGCCAGTATTCTCAGAGTGCCATATGAACCATCCAGGAAAGCTGGCAAATTTCTAACAGT

**ACGCGT**ACGCGGCCGCTCGAGCAGAACTCATCTCAGAAGAGGATCTGGCAGCAAATGATATCTGGATT  
 ACAAGGATGACGACGATAAGGTTTAA

**Protein Sequence:**

>RC210414 protein sequence  
 Red=Cloning site Green=Tags(s)

MMLSEQAQKWFPTHVQTVLQAKDLKPKGKSGTNDTYTIIQLGKEKYSTSVAEKTLEPVWKEEASFELPG  
 LLIQGSPEKYILFLIVMHRSLVGLDKFLGQVAINLNDIFEDKQRRKTEWFRLESKQGKRIKNRGEIKVNI  
 QFMRNMTASMFDSLMDKTRSPFAKLDKMKGRKNDGTFSDTSSAIIIPSTHMPDANSEFSSGEIQMKS  
 PKKPFLLGPQRLSSAHSMSDLGSHMSSEKLKAGTIGQTHLLGHQLDSFGTVPESGSLKSPHRRTLSFDT  
 SKMNQPDSIVDEGELCFGRQNDPFTNVTASLPQKFATLPRKKNPFEESEETWSSMNLFSKPIEIRKENK  
 REKREKVSLEFERVTGKKDSRRSDKLNNGGSDSPCDLKSPNAFSENQDYFDYESTNPFTAKFRASINMPS  
 SSFHMSPTSNEDLRKIPDSNPFDATAGYRSLTYEEVLQELVKHKELLRRKDTHIRELEDYIDNLLVRVME  
 ETPSILRVPEPSRKAGKFSNS

**TR**TRPLEQKLISEEDLAANDILDYKDDDDKV

**Chromatograms:**

[https://cdn.origene.com/chromatograms/mk6584\\_d07.zip](https://cdn.origene.com/chromatograms/mk6584_d07.zip)

**Restriction Sites:**

Sgfl-Mlul

**Cloning Scheme:**


**ACCN:** NM\_014904

**ORF Size:** 1536 bp

**OTI Disclaimer:** The molecular sequence of this clone aligns with the gene accession number as a point of reference only. However, individual transcript sequences of the same gene can differ through naturally occurring variations (e.g. polymorphisms), each with its own valid existence. This clone is substantially in agreement with the reference, but a complete review of all prevailing variants is recommended prior to use. [More info](#)

**OTI Annotation:** This clone was engineered to express the complete ORF with an expression tag. Expression varies depending on the nature of the gene.

**Components:** The ORF clone is ion-exchange column purified and shipped in a 2D barcoded Matrix tube containing 10ug of transfection-ready, dried plasmid DNA (reconstitute with 100 ul of water).

**Reconstitution Method:**

1. Centrifuge at 5,000xg for 5min.
2. Carefully open the tube and add 100ul of sterile water to dissolve the DNA.
3. Close the tube and incubate for 10 minutes at room temperature.
4. Briefly vortex the tube and then do a quick spin (less than 5000xg) to concentrate the liquid at the bottom.
5. Store the suspended plasmid at -20°C. The DNA is stable for at least one year from date of shipping when stored at -20°C.

**RefSeq:** [NM\\_014904.1](#), [NP\\_055719.1](#)

**RefSeq Size:** 6077 bp

**RefSeq ORF:** 1539 bp

**Locus ID:** 22841

**UniProt ID:** [Q7L804](#)

**Cytogenetics:** 10q26.11

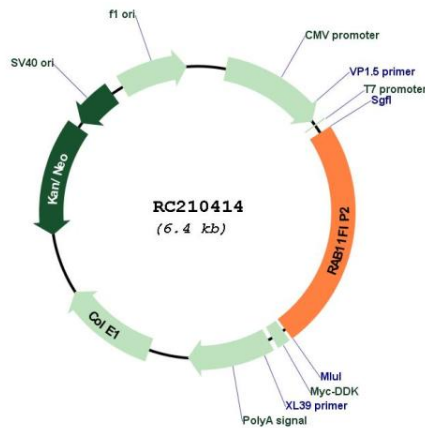
**Domains:** C2

**Protein Pathways:** Endocytosis

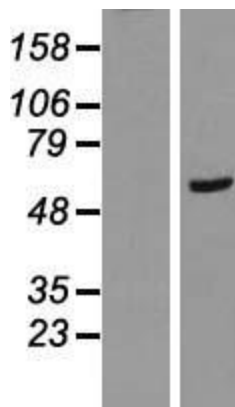
**MW:** 58.3 kDa

**Gene Summary:** A Rab11 effector binding preferentially phosphatidylinositol 3,4,5-trisphosphate (PtdInsP3) and phosphatidic acid (PA) and acting in the regulation of the transport of vesicles from the endosomal recycling compartment (ERC) to the plasma membrane. Involved in insulin granule exocytosis. Also involved in receptor-mediated endocytosis and membrane trafficking of recycling endosomes, probably originating from clathrin-coated vesicles. Required in a complex with MYO5B and RAB11 for the transport of NPC1L1 to the plasma membrane. Also acts as a regulator of cell polarity. Plays an essential role in phagocytosis through a mechanism involving TICAM2, RAC1 and CDC42 Rho GTPases for controlling actin-dynamics.[UniProtKB/Swiss-Prot Function]

**Product images:**



Circular map for RC210414



Western blot validation of overexpression lysate (Cat# [LY414899]) using anti-DDK antibody (Cat# [TA50011-100]). Left: Cell lysates from untransfected HEK293T cells; Right: Cell lysates from HEK293T cells transfected with RC210414 using transfection reagent MegaTran 2.0 (Cat# [TT210002]).