

Product datasheet for **RC210413**

SCARA3 (NM_016240) Human Tagged ORF Clone

Product data:

Product Type:	Expression Plasmids
Product Name:	SCARA3 (NM_016240) Human Tagged ORF Clone
Tag:	Myc-DDK
Symbol:	SCARA3
Synonyms:	APC7; CSR; CSR1; MSLR1; MSRL1
Mammalian Cell Selection:	Neomycin
Vector:	pCMV6-Entry (PS100001)
E. coli Selection:	Kanamycin (25 ug/mL)



[View online »](#)

ORF Nucleotide Sequence:

>RC210413 ORF sequence
 Red=Cloning site Blue=ORF Green=Tags(s)

TTTTGTAATACGACTCACTATAGGGCGGCCGGAATTCGTCGACTGGATCCGGTACCGAGGAGATCTGCC
 GCC**CGGATCGCC**

ATGAAAGTGGAGTCCGCCGGCGGATGGAGATGCCTTGTGCGTTACAGAAGAGGACCTGGCGGGTACG
 ACGAGGACATGCCGACCTTCCCATGCACCCAGAAGGGCCGGCCAGGGCCCGCTGCAGCCGCTGCCAGAA
 GAACCTATCTTTGCACACATCGGTGCGGATTCTTTACCTCTTCTGCGCCCTGCTCCTGGTGGCCGTGGCT
 GTGTTGGCCTCTCTGGTTTTAGAAAAGTGGACTCTCTCCGAAGACATCTCCTTGACCCAGTCTATTT
 ATGACAAGAAGCTTGTGTTAATGCAGAAAAATCTCCAGGGCCTGGATCCGAAAGCCCTGAACAACCTGCTC
 TTTCTGCCATGAAGCTGGGCAGCTGGGGCCAGAGATCCGAAAACCTGCAGGAGGAGCTGGAGGGAATTCAG
 AAGCTGCTTCTGGCCAGGAGGTGCAGCTGGACCAGACCTTACAGGCCAGGAGGTCTCCACCACCA
 GCAGACAAATCTCCAGGAGATGGGCAGTTGCTCCTTCCATCCACCAGTTAACCACTCTCTGGGGCT
 CTTCTGGCCAGGTGAGAGGCTGGCAGGCCACCACAGCTGGCCTGGACCTCTCTGAAGGACCTCACC
 CAGGAGTGTACGATGTCAAGGCTGCAGTGCACCAGATCAACTTACCGTGGGGCAGACTTCCGAGTGGA
 TCCACGGGATCCAGCGGAAGACAGACGAGGAGACCCTGACCTCCAGAAGATTGTACCCGACTGGCAGAA
 CTACACACGGCTCTTACGCGCCTGCGCACCACTCCACCAAGACTGGAGAGGCGGTCAAGAATCCAG
 GCCACCTGGGGCCTCCTCACAGCGCATCAGCCAGAACTCAGAGAGCATGCACGACCTGGTACTCCAGG
 TCATGGGCTTGCAGCTGCAGCTGGATAACATCTCGTCTTCTGGATGACCACGAAGAGAACATGCATGA
 TCTTCAGTACCATAACCACTACGCCCAGAACCGCACTGTGGAGAGGTTTGTAGTCTCTGGAAGGACGCATG
 GCTTCTCAGGAGATTGAAATGGCACCATCTTACCAACATCAATGCCACCGACAACCACGTGCACAGCA
 TGCTCAAGTACCTGGATGACGTGCGGCTCTCCTGCACGCTGGGCTTCCACACCCATGCCGAGGAGCTCTA
 CTACCTGAACAAGTCTGTCTCATCATGCTGGGCACCACAGACCTGCTCCGGGAGCGCTTACGCCTGCTC
 AGTGCCCGGCTGGACCTCAACGTCCGGAACCTCTCCATGATCGTGGAGGAGATGAAGGCAGTGGACACAC
 AGCATGGAGAAATCCTTCGCAATGTACCATCCTACGAGGTGCCCGGCCCTCCAGGACCAAGAGGATT
 CAAAGGAGATATGGGCGTAAAGGGCCTGTTGGCGGCAGAGGCCGAAAGGAGACCCCGGCAGCTTGGGC
 CCCCTGGGACCCAGGGTCTCAGGGGCAACTGGAGAGGCCGGGCTGTGGGAGAAAGGGCCCTGTTG
 GCCCTCGAGGGTCCCAGGCCTCAAAGGCTCAAAGGGCAGCTTTGAACTGGAGGGCCGAGAGGACAGCC
 AGGCCAAAAGGGGACATAGGGCCCCAGGGCCAGAAGGGCCCCGGGTCTCCAGGGCCCTCAGGGCT
 CAGGGAAAACCGGAATTGCAGGAAGACAGGGTACCAGGCCAGCGGGGGCCATGGGGCTAAGGGTG
 AACCGGGATCCAGGGTCCCCCTGGTCTCCCGGGCCTCCAGGTCCACCAGGAAGCCAGAGCTTCTAC

ACGCGTACGCGGCCGCTCGAGCAGAAACTCATCTCAGAAGAGGATCTGGCAGCAAATGATATCCTGGATT
 ACAAGGATGACGACGATAAGGTTTAA

Protein Sequence:

>RC210413 protein sequence
 Red=Cloning site Green=Tags(s)

MKVRSAAGDGDALCVTEEDLAGDDEDMPTFPCTQKGRPGPRCSRCQKNLSLHTSVRILYLFLALLLVAVA
 VLASLVFRKVDLSLSEDISLTQSIYDKKLVLQMKNLQGLDPKALNNCSFCHEAGQLGPEIRKLQEELEGIQ
 KLLLAQEVQLDQTLQAQEVLTSTRQISQEMGSCSFSIHQVNSLGLFLAQVRGWQATTAGLDLSKDLT
 QECYDVKA AVHQINFTVGQTSEWIHGIQRKTDEETLTLQKIVTDWQNYTRLFSGLRRTSTKTGEAVKNIQ
 ATLGASSQRISQNSESMHDLVLQVMGLQLQLDNISFLLDDHEENMHDLYHHTHYAQNRTVERFESLEGRM
 ASHEIEIGTIFTNINATDNHVSMLKYLDDVRLSCTLGFHTHAEELYYLNKSVSIMLGTTDLLRERFSLL
 SARLDLNVRLSMIVEEMKAVDTQHGEILRNVTILRGAPPPGPRGFKGDMGVKGPVGGRGPKGDPGSLG
 PLPGQPQGPGEAGPVGERGPVGRGFPGLKGSKGSFSGTGGPRGQPGPKGDIIPPPEGPPGSPGSPG
 QKPGIAGKTGSPQRGAMGPKGEPGIQPPPLPGPPPPGSQSFY

TRTRPLEQKLISEEDLAANDILDYKDDDDKV

Chromatograms:

https://cdn.origene.com/chromatograms/mk6766_c02.zip

Restriction Sites: SgfI-MluI

Cloning Scheme:



ACCN: NM_016240

ORF Size: 1818 bp

OTI Disclaimer: The molecular sequence of this clone aligns with the gene accession number as a point of reference only. However, individual transcript sequences of the same gene can differ through naturally occurring variations (e.g. polymorphisms), each with its own valid existence. This clone is substantially in agreement with the reference, but a complete review of all prevailing variants is recommended prior to use. [More info](#)

OTI Annotation: This clone was engineered to express the complete ORF with an expression tag. Expression varies depending on the nature of the gene.

Components: The ORF clone is ion-exchange column purified and shipped in a 2D barcoded Matrix tube containing 10ug of transfection-ready, dried plasmid DNA (reconstitute with 100 ul of water).

- Reconstitution Method:
1. Centrifuge at 5,000xg for 5min.
 2. Carefully open the tube and add 100ul of sterile water to dissolve the DNA.
 3. Close the tube and incubate for 10 minutes at room temperature.
 4. Briefly vortex the tube and then do a quick spin (less than 5000xg) to concentrate the liquid at the bottom.
 5. Store the suspended plasmid at -20°C. The DNA is stable for at least one year from date of shipping when stored at -20°C.

RefSeq: [NM_016240.3](#)

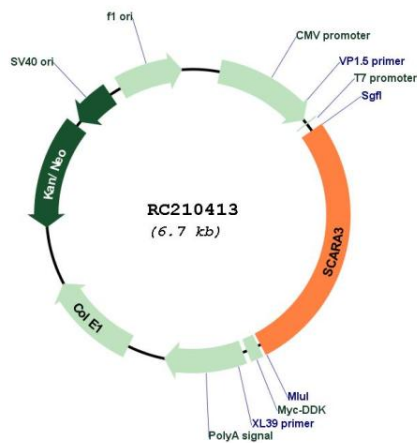
RefSeq Size: 3631 bp

RefSeq ORF: 1821 bp

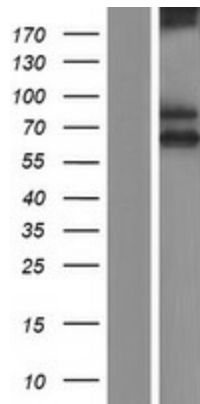
Locus ID: 51435

UniProt ID: [Q6AZY7](#)
Cytogenetics: 8p21.1
Domains: Collagen
Protein Families: Druggable Genome, Transmembrane
MW: 65.1 kDa
Gene Summary: This gene encodes a macrophage scavenger receptor-like protein. This protein has been shown to deplete reactive oxygen species, and thus play an important role in protecting cells from oxidative stress. The expression of this gene is induced by oxidative stress. Alternatively spliced transcript variants encoding distinct isoforms have been described. [provided by RefSeq, Jul 2008]

Product images:



Circular map for RC210413



Western blot validation of overexpression lysate (Cat# [LY414104]) using anti-DDK antibody (Cat# [TA50011-100]). Left: Cell lysates from untransfected HEK293T cells; Right: Cell lysates from HEK293T cells transfected with RC210413 using transfection reagent MegaTran 2.0 (Cat# [TT210002]).