

Product datasheet for **RC210412**

IL1 Receptor I (IL1R1) (NM_000877) Human Tagged ORF Clone

Product data:

Product Type:	Expression Plasmids
Product Name:	IL1 Receptor I (IL1R1) (NM_000877) Human Tagged ORF Clone
Tag:	Myc-DDK
Symbol:	IL1 Receptor I
Synonyms:	CD121A; D2S1473; IL-1R-alpha; IL1R; IL1RA; P80
Mammalian Cell Selection:	Neomycin
Vector:	pCMV6-Entry (PS100001)
E. coli Selection:	Kanamycin (25 ug/mL)



[View online »](#)

ORF Nucleotide Sequence:

>RC210412 representing NM_000877
 Red=Cloning site Blue=ORF Green=Tags(s)

TTTTGTAATACGACTCACTATAGGGCGGCCGGAATTCGTCGACTGGATCCGGTACCGAGGAGATCTGCC
 GCC**CGCATCGCC**

ATGAAAGTGTACTCAGACTTATTTGTTTCATAGCTCTACTGATTCTTCTCTGGAGGCTGATAAATGCA
 AGGAACGTGAAGAAAAATAATTTTAGTGCATCTGCAAATGAAATTGATGTTTCGTCCTGTCTCTTAA
 CCCAAATGAACACAAAGGCACTATAACTTGGTATAAAGATGACAGCAAGACACCTGTATCTACAGAACA
 GCCTCCAGGATTCATCAACACAAAGAGAACTTTGGTTTGTCTGCTAAGGTGGAGGATTCAGGACATT
 ACTATTGCGTGGTAAGAAATTCATCTTACTGCCTCAGAATTAATAAGTGCAAAATTTGTGGAGAAATGA
 GCCTAACTTATGTTATAATGCACAAGCCATATTTAAGCAGAACTACCCGTTGCAGGAGACGGAGGACTT
 GTGTGCCCTTATATGGAGTTTTTAAAAATGAAAATAATGAGTTACCTAAATTACAGTGGTATAAGGATT
 GCAAACCTCTACTTCTTGACAATATACACTTTAGTGGAGTCAAAGATAGGCTCATCGTGATGAATGTGGC
 TGAAGCATAGAGGGAACATACTTGCATGCATCCTACACATACTTGGCAAGCAATATCCTATTACC
 CCGGTAATAGAATTTTACTCTAGAGGAAAACAACCCACAAGGCTGTGATTGTGAGCCAGCTAATG
 AGACAATGGAAGTAGACTTGGGATCCCAGATACAATTGATCTGTAATGTCACCGGCCAGTTGAGTGACAT
 TGCTTACTGGAAGTGAATGGGTGAGTAAATGATGAAGATGACCCAGTGCTAGGGGAAGACTATTACAGT
 GTGGAAAATCCTGCAAACAAAAGAAGGAGTACCCTCATCACAGTGCTTAATATATCGGAAATGAAAGTA
 GATTTTATAAACATCCATTTACCTGTTTTGCCAAGAATACACATGGTATAGATGCAGCATATATCCAGTT
 AATATATCCAGTCACTAATTTCCAGAAGCACATGATTGGTATATGTGTACGTTGACAGTCATAATTGTG
 TGTCTGTTTTCATCTATAAAATCTTCAAGATTGACATTGTGCTTTGGTACAGGGATTCTGCTATGATT
 TTCTCCCAATAAAAGCTTCAGATGGAAGACCTATGACGCATATACTGTATCCAAAGACTGTTGGGGA
 AGGGTCTACCTCTGACTGTGATATTTTTGTGTTTAAAGTCTTGCCTGAGGTCTTGAAAAACAGGTGGA
 TATAAGCTGTTCATTTATGGAAGGGATGACTACGTTGGGGAAGACATTGTTGAGGTCATTAAATGAAAACG
 TAAAGAAAAGCAGAAGACTGATTATCATTTTAGTCAGAGAAACATCAGGCTTCAGCTGGCTGGTGGTTC
 ATCTGAAGAGCAAATAGCCATGTATAATGCTCTTGTTCAGGATGGAATTAAGTTGCTGCTTGTGAGCTG
 GAGAAAATCCAAGACTATGAGAAAATGCCAGAATCGATTAAATTCATTAAGCAGAAAACATGGGGCTATCC
 GCTGGTACAGGGACTTTACACAGGGACCACAGTCTGCAAAGACAAGGTTCTGGAAGAATGCAGGTACCA
 CATGCCAGTCCAGCGACGGTACCTTCATCTAAACACCAGTACTGTACCAGCCACTAAGGAGAAAAGTGC
 CAAAGAGAGGCTCACGTGCTCTCGGG

ACGCGTACGCGGCCGCTCGAGCAGAAACTCATCTCAGAAGAGGATCTGGCAGCAAATGATATCCTGGATT
 ACAAGGATGACGACGATAAGGTTTAA

Protein Sequence:

>RC210412 representing NM_000877
 Red=Cloning site Green=Tags(s)

MKVLRLICFIALLISSLEADKCKEREKIIIVSSANEIDVRPCPLNPNEHKGTITWKDDSKTPVSTEQ
 ASRIHQHKEKLFVPAKVEDSGHYCVVRNSSYCLRIKISAKFVENEPNLCYNAQAIFKQKLPVAGDGG
 VCPYMEFFKNENNELPKLQWYKDKPLLLDNIHFSGVKDRLIVMNVAEKHRGNYTCHASYTYLQKQYPI
 RVIEFITLEENKPTRPVIIVSPANETMEVDLGSQIQLICNVTGQLSDIAYWKWNGSVIDEDDPVLGEDY
 YS VNPANKRRSTLITVLNISEIESRFYKHPFTCFKANTHGIDAAYIQLIYPVTNFKQHMIGICVTLTVIIV
 CSVFIYKIFKIDIVLWYRDSYDFLPIKASDGKTYDAYILYPKTVGEGSTSDCDFVFKVLPVLEKQCG
 YKLFYIGRDDYVGEDIVEVINENVKSRRLIIILVRETSGF SWLGGSSSEEQIAMYNALVQDGIKVLLLEL
 EKIQDYEKMPESIKFIKQKHGAIRWSDFTQGPQSAKTRFWKNVRYHMPVQRRSPSSKHQLLSPATKEKL
 QREAHVPLG

TRTRPLEQKLISEEDLAANDILDYKDDDDKV

Chromatograms:

https://cdn.origene.com/chromatograms/mg3600_d02.zip

Restriction Sites:

Sgfl-Mlul

Cloning Scheme:


ACCN: NM_000877

ORF Size: 1707 bp

OTI Disclaimer: The molecular sequence of this clone aligns with the gene accession number as a point of reference only. However, individual transcript sequences of the same gene can differ through naturally occurring variations (e.g. polymorphisms), each with its own valid existence. This clone is substantially in agreement with the reference, but a complete review of all prevailing variants is recommended prior to use. [More info](#)

OTI Annotation: This clone was engineered to express the complete ORF with an expression tag. Expression varies depending on the nature of the gene.

Components: The ORF clone is ion-exchange column purified and shipped in a 2D barcoded Matrix tube containing 10ug of transfection-ready, dried plasmid DNA (reconstitute with 100 ul of water).

- Reconstitution Method:**
1. Centrifuge at 5,000xg for 5min.
 2. Carefully open the tube and add 100ul of sterile water to dissolve the DNA.
 3. Close the tube and incubate for 10 minutes at room temperature.
 4. Briefly vortex the tube and then do a quick spin (less than 5000xg) to concentrate the liquid at the bottom.
 5. Store the suspended plasmid at -20°C. The DNA is stable for at least one year from date of shipping when stored at -20°C.

Note: Plasmids are not sterile. For experiments where strict sterility is required, filtration with 0.22um filter is required.

RefSeq: [NM_000877.4](#)

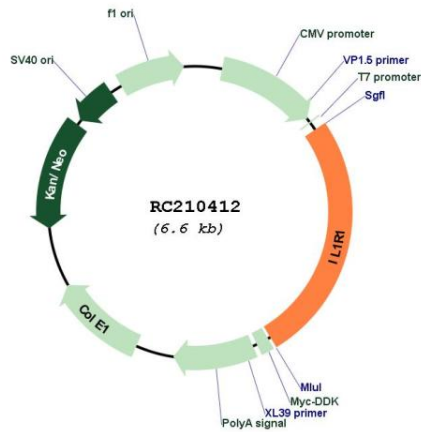
RefSeq Size: 4909 bp

RefSeq ORF: 1710 bp

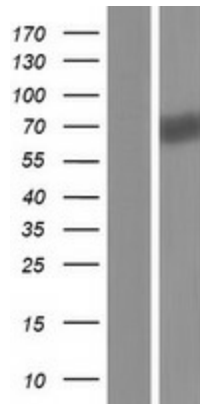
Locus ID: 3554

UniProt ID:	P14778
Cytogenetics:	2q11.2-q12.1
Domains:	TIR, IG
Protein Families:	Druggable Genome, Transmembrane
Protein Pathways:	Apoptosis, Cytokine-cytokine receptor interaction, Hematopoietic cell lineage, MAPK signaling pathway
MW:	65.4 kDa
Gene Summary:	This gene encodes a cytokine receptor that belongs to the interleukin-1 receptor family. The encoded protein is a receptor for interleukin-1 alpha, interleukin-1 beta, and interleukin-1 receptor antagonist. It is an important mediator involved in many cytokine-induced immune and inflammatory responses. This gene is located in a cluster of related cytokine receptor genes on chromosome 2q12. [provided by RefSeq, Dec 2013]

Product images:



Circular map for RC210412



Western blot validation of overexpression lysate (Cat# [LY424475]) using anti-DDK antibody (Cat# [TA50011-100]). Left: Cell lysates from untransfected HEK293T cells; Right: Cell lysates from HEK293T cells transfected with RC210412 using transfection reagent MegaTran 2.0 (Cat# [TT210002]).