

Product datasheet for **RC210407**

NOVA1 (NM_002515) Human Tagged ORF Clone

Product data:

Product Type:	Expression Plasmids
Product Name:	NOVA1 (NM_002515) Human Tagged ORF Clone
Tag:	Myc-DDK
Symbol:	NOVA1
Synonyms:	Nova-1
Mammalian Cell Selection:	Neomycin
Vector:	pCMV6-Entry (PS100001)
E. coli Selection:	Kanamycin (25 ug/mL)



[View online »](#)

ORF Nucleotide Sequence:

>RC210407 ORF sequence
 Red=Cloning site Blue=ORF Green=Tags(s)

TTTTGTAATACGACTCACTATAGGGCGGCCGGAATTCGTCGACTGGATCCGGTACCGAGGAGATCTGCC
 GCC**CGCATCGCC**

ATGATGGCGGCAGCTCCCATCCAGCAGAACGGGACCCACACTGGGGTCCCATAGACCTGGACCCGCCGG
 ACTCGCGGAAAAGGCCGCTGGAAGCCCCCTGAAGCCGGCAGCACCAAGAGGACCAATACGGGCGAAGA
 CGGCCAGTATTTTCTAAAGGTTCTCATACCTAGTTATGCTGCTGGATCTATAATTGGGAAGGGAGGACAG
 ACAATTGTTCAAGTTGCAAAAAGAACTGGAGCCACCATCAAGCTGTCTAAGTCCAAAGATTTTACCAG
 GTACTACTGAGCGAGTGTGCTTGTCCAGGGAACGGTTGAAGCACTGAATGCAGTTCATGGATTCATTGC
 AGAAAAAATTCGAGAAATGCCCAAAATGTGGCCAAGACAGAACCAGTCAGCATTCTACAACCCAGACC
 ACCGTTAATCCAGATCGCATCAAACAAACATTGCCATCTCCCAACTACCACCAAGTCTCTCCATCTG
 ATCCCATGACCACCTCCAGAGCTAATCAGGTAAGATTATAGTTCCCAACAGCACAGCAGGTCTGATAAT
 AGGGAAGGGAGGTGCTACTGTGAAGGCTGTAATGGAGCAGTCAGGGGCTTGGGTGCAGCTTCCAGAAA
 CCTGATGGGATCAACTTGAAGAGAGGGTTGCTACTGTGAGTGGAGAACCCTGAACAAAACCGAAAAGCTG
 TTGAACTTATCATCCAGAAGATACAAGAGGATCCACAAAGTGGCAGCTGTCTCAATATCAGTTATGCCAA
 TGTGACAGGTCCAGTGGCAAATTCCAATCCAACCGGATCTCCTTATGCAAACTGCTGAAGTGTACCA
 ACTGCTGCAGCAGCTGCAGGGCTATTAGGACATGCTAACCTTGCTGGCGTTGCAGCCTTCCAGCAGTTT
 TATCTGGCTTACAGGCAATGACCTGGTGGCCATCACCTCTGCACTTAATACATTAGCCAGCTATGGATA
 TAATCTCAACACTTTAGGTTTAGGTCTCAGTCAAGCAGCAGCAACAGGGGCTTGGCTGCAGCAGCTGCC
 AGTGCCAAACCCAGCAGCAGCAGCAATTTATTGGCCACCTATGCCAGTGAAGCCTCAGCCAGTGGCA
 GCACAGCTGGTGGTACGGCGGGACATTTGCATTAGGTAGCCTGGCTGCTGCTACTGCAACCAATGG
 ATATTTTGGAGCTGCTTCTCCCTAGCTGCCAGTGCCTTCTAGGAACAGAAAAGTCCACAGATGGATCC
 AAGGATGTAGTTGAAATAGCAGTGCCAGAAAACCTTAGTTGGTGAATACTTGGCAAAGGAGGAAAAACAT
 TAGTGGAAATACCAGGAGTTGACTGGTGAAGGATACAGATCTCCAAAAAGGAGAATTCGTACCTGGCAC
 AAGGAATCGGAAGGTAACCATTACTGGAACACCAGCTGCAACACAGGCTGCTCAATATTTAATTACACAA
 AGGATCACATATGAGCAAGGAGTTCGGGCTGCCAATCCTCAGAAAAGTGGGT

ACGCGTACGCGGCCGCTCGAGCAGAACTCATCTCAGAAGAGGATCTGGCAGCAAATGATATCCTGGATT
 ACAAGGATGACGACGATAAGGTTTAA

Protein Sequence:

>RC210407 protein sequence
 Red=Cloning site Green=Tags(s)

MMAAAPIQQNGHTGVPIIDLPPDSRKRPLEAPPEAGSTKRTNTGEDGQYFLKVLIPSYAAGSIIGKGGQ
 TIVQLQKETGATIKLSKSKDFYPGTTERVCLIQGTVEALNAVHGFIAEKIREMPQNVAKTEPVSILQPQT
 TVNPDRIKQTLPSPTTTKSSPDMTTSRANQVKIIVPNSTAGLIIGKGGATVKAVMEQSGAWVQLSQK
 PDGINLQERVVTVSGEPEQNRKAVELIIQKIQEDPQSGSCLNISYANVTGPVANSNPTGSPYANTAEVLP
 TAAAAAGLLGHANLAGVAFFPAVL SGFTGNDLVAITSALNLTASYGNLNTLGLLSQAAATGALAAAAA
 SANPAAAAANLLATYASEASASGSTAGGTAGTFALGSLAAATAATNGYFGAASPLAASA ILGTEKSTDGS
 KDVVEIAVPENLVGAILGKGGKTLVEYQELTGARIQISKKGEFVPGTRNRKVTITGTPAATQAAQYLITQ
 RITYEQGVRAANPQKVG

TRTRPLEQKLISEEDLAANDILDYKDDDDKV

Chromatograms:

https://cdn.origene.com/chromatograms/mk6195_c08.zip

Restriction Sites:

Sgfl-Mlul

Cloning Scheme:


ACCN: NM_002515

ORF Size: 1521 bp

OTI Disclaimer: The molecular sequence of this clone aligns with the gene accession number as a point of reference only. However, individual transcript sequences of the same gene can differ through naturally occurring variations (e.g. polymorphisms), each with its own valid existence. This clone is substantially in agreement with the reference, but a complete review of all prevailing variants is recommended prior to use. [More info](#)

OTI Annotation: This clone was engineered to express the complete ORF with an expression tag. Expression varies depending on the nature of the gene.

Components: The ORF clone is ion-exchange column purified and shipped in a 2D barcoded Matrix tube containing 10ug of transfection-ready, dried plasmid DNA (reconstitute with 100 ul of water).

Reconstitution Method:

1. Centrifuge at 5,000xg for 5min.
2. Carefully open the tube and add 100ul of sterile water to dissolve the DNA.
3. Close the tube and incubate for 10 minutes at room temperature.
4. Briefly vortex the tube and then do a quick spin (less than 5000xg) to concentrate the liquid at the bottom.
5. Store the suspended plasmid at -20°C. The DNA is stable for at least one year from date of shipping when stored at -20°C.

RefSeq: [NM_002515.3](#)

RefSeq Size: 3918 bp

RefSeq ORF: 1524 bp

Locus ID: 4857

UniProt ID: [P51513](#)

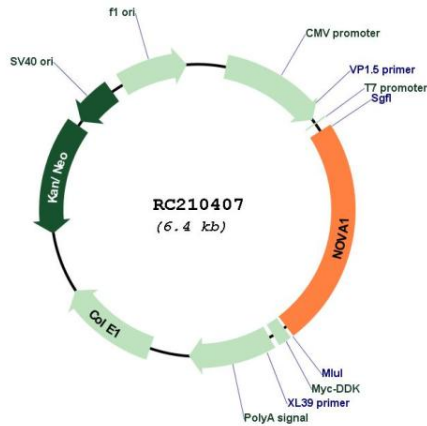
Cytogenetics: 14q12

Domains: KH

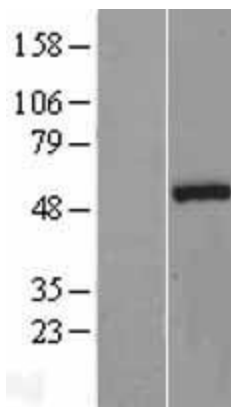
MW: 51.7 kDa

Gene Summary: This gene encodes a neuron-specific RNA-binding protein, a member of the Nova family of paraneoplastic disease antigens, that is recognized and inhibited by paraneoplastic antibodies. These antibodies are found in the sera of patients with paraneoplastic opsoclonus-ataxia, breast cancer, and small cell lung cancer. Alternatively spliced transcripts encoding distinct isoforms have been described. [provided by RefSeq, Jul 2008]

Product images:



Circular map for RC210407



Western blot validation of overexpression lysate (Cat# [LY400898]) using anti-DDK antibody (Cat# [TA50011-100]). Left: Cell lysates from untransfected HEK293T cells; Right: Cell lysates from HEK293T cells transfected with RC210407 using transfection reagent MegaTran 2.0 (Cat# [TT210002]).



Coomassie blue staining of purified NOVA1 protein (Cat# [TP310407]). The protein was produced from HEK293T cells transfected with NOVA1 cDNA clone (Cat# RC210407) using MegaTran 2.0 (Cat# [TT210002]).