

Product datasheet for RC210406

P2Y1 (P2RY1) (NM_002563) Human Tagged ORF Clone

Product data:

| | |
|---------------------------|---|
| Product Type: | Expression Plasmids |
| Product Name: | P2Y1 (P2RY1) (NM_002563) Human Tagged ORF Clone |
| Tag: | Myc-DDK |
| Symbol: | P2Y1 |
| Synonyms: | P2Y1; SARCC |
| Mammalian Cell Selection: | Neomycin |
| Vector: | pCMV6-Entry (PS100001) |
| E. coli Selection: | Kanamycin (25 ug/mL) |
| ORF Nucleotide Sequence: | >RC210406 ORF sequence Red=Cloning site Blue=ORF Green=Tags(s) |

TTTTGTAATACGACTCACTATAGGGCGGCCGGAATTCGTCGACTGGATCCGGTACCGAGGAGATCTGCC
GCC**CGATCGCC**

ATGACCGAGGTGCTGTGGCCGGCTGTCCCAACGGGACGGACGCTGCCTTCTGGCCGGTCCGGTTCGT
CCTGGGGAAACAGCACGGTCGCCTCCACTGCCCGCTCTCCTCGTCGTTCAAATGCGCCTTGACCAAGAC
GGGCTTCCAGTTTACTACCTGCCGGCTGTCTACATCTTGGTATTCATCATCGGCTTCTGGCAACAGC
GTGGCCATCTGGATGTTCTTCCACATGAAGCCCTGGAGCGGCATCTCCGTGTACATGTTCAATTTGG
CTCTGGCCGACTTCTTGTACGTGCTGACTCTGCCAGCCCTGATCTTCTACTTCAATAAAACAGACTG
GATCTTCGGGGATGCCATGTGTAAGTGCAGAGGTTTCATCTTTCATGTGAACCTCTATGGCAGCATCTTG
TTTCTGACATGCATCAGTGCCACCCGGTACAGCGGTGTGGTGTACCCCTCAAGTCCCTGGGCCGGCTCA
AAAAGAAGAATGCGATCTGTATCAGCGTGTGGTGTGGCTCATTGTGGTGGTGGGATCTCCCCATCCT
CTTCTACTCAGGTACCGGGTCCGCAAAAACAAAACATCACCTGTTACGACACCACCTCAGACGAGTAC
CTGCGAAGTTATTTATCTACAGCATGTGCACGACCGTGGCCATGTTCTGTGTCCCTTGGTGTGATTC
TGGGCTGTTACGGATTAATTGTGAGAGCTTTGATTTACAAAGATCTGGACAACTCCTCTGAGGAGAAA
ATCGATTTACCTGGTAATCATTGTACTGACTGTTTTGCTGTGTCTTACATCCCTTCCATGTGATGAAA
ACGATGAACTTGAGGCCCGGCTTGATTTTCAGACCCAGCAATGTGTGCTTTCAATGACAGGGTTTATG
CCACGTATCAGGTGACAAGAGGCTTAGCAAGTCTCAACAGTTGTGTGGACCCATTCTCTATTTCTTGGC
GGGAGATACTTTCAAGAGGAGACTCTCCCGAGCCACAAGGAAAGCTTCTAGAAGAAGTGAGGCAAATTTG
CAATCCAAGAGTGAAGACATGACCCTCAATATTTTACCTGAGTTCAAGCAGAATGGAGATACAAGCCTG

ACGCGTACGCGGCCGCTCGAGCAGAAACTCATCTCAGAAGAGGATCTGGCAGCAAATGATATCCTGGATT
ACAAGGATGACGACGATAAGGTTAA



[View online »](#)

Protein Sequence: >RC210406 protein sequence
Red=Cloning site Green=Tags(s)

MTEVLWPAVPNGTDAFLAGPGSSWGNSTVASTAAVSSSFKCALTKTGFQFYLPVAVIILVFIIGFLGNS
 VAIWMFVFHMKPWSGISVYMFNLALADFLYVL TLPALIFYFNKTDWIFGDAMCKLQRFIFHVNLYGSIL
 FLTCISAHRYSGVYVPLKSLGRLKKKNAICISVLVWLVVVAISPILFYSGTGVRKNKTITCYDSTSDEY
 LRSYFIYSMCTTVAMFCVPLVLILGCGYGLIVRALIYKDLDNSPLRRKSIYLVIIIVLTVFAVSYIPFHVMK
 TMNLRARLDFQTPAMCAFNDRVYATYQVTRGLASLNSCVDPILYFLAGDTRRRRLSRATRKRASRRSEANL
 QSKSEMTLNILPEFKQNGDTSL

TRTRPLEQKLISEEDLAANDILDYKDDDDKV

Chromatograms: https://cdn.origene.com/chromatograms/mk6006_c06.zip

Restriction Sites: SgfI-MluI

Cloning Scheme:



ACCN: NM_002563

ORF Size: 1119 bp

OTI Disclaimer: The molecular sequence of this clone aligns with the gene accession number as a point of reference only. However, individual transcript sequences of the same gene can differ through naturally occurring variations (e.g. polymorphisms), each with its own valid existence. This clone is substantially in agreement with the reference, but a complete review of all prevailing variants is recommended prior to use. [More info](#)

OTI Annotation: This clone was engineered to express the complete ORF with an expression tag. Expression varies depending on the nature of the gene.

Components: The ORF clone is ion-exchange column purified and shipped in a 2D barcoded Matrix tube containing 10ug of transfection-ready, dried plasmid DNA (reconstitute with 100 ul of water).

Reconstitution Method:

1. Centrifuge at 5,000xg for 5min.
2. Carefully open the tube and add 100ul of sterile water to dissolve the DNA.
3. Close the tube and incubate for 10 minutes at room temperature.
4. Briefly vortex the tube and then do a quick spin (less than 5000xg) to concentrate the liquid at the bottom.
5. Store the suspended plasmid at -20°C. The DNA is stable for at least one year from date of shipping when stored at -20°C.

RefSeq: [NM_002563.5](#)

RefSeq Size: 3110 bp

RefSeq ORF: 1122 bp

Locus ID: 5028

UniProt ID: [P47900](#)

Cytogenetics: 3q25.2

Domains: 7tm_1

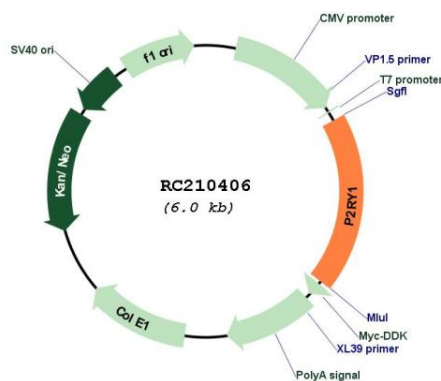
Protein Families: Druggable Genome, GPCR, Transmembrane

Protein Pathways: Neuroactive ligand-receptor interaction

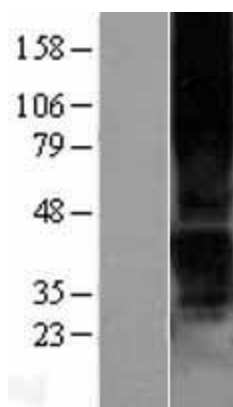
MW: 42.1 kDa

Gene Summary: The product of this gene belongs to the family of G-protein coupled receptors. This family has several receptor subtypes with different pharmacological selectivity, which overlaps in some cases, for various adenosine and uridine nucleotides. This receptor functions as a receptor for extracellular ATP and ADP. In platelets binding to ADP leads to mobilization of intracellular calcium ions via activation of phospholipase C, a change in platelet shape, and probably to platelet aggregation. [provided by RefSeq, Jul 2008]

Product images:



Circular map for RC210406



Western blot validation of overexpression lysate (Cat# [LY400908]) using anti-DDK antibody (Cat# [TA50011-100]). Left: Cell lysates from untransfected HEK293T cells; Right: Cell lysates from HEK293T cells transfected with RC210406 using transfection reagent MegaTran 2.0 (Cat# [TT210002]).