

Product datasheet for RC210404L1

Proteinase Activated Receptor 4 (F2RL3) (NM_003950) Human Tagged Lenti ORF Clone

Product data:

Product Type:	Expression Plasmids
Product Name:	Proteinase Activated Receptor 4 (F2RL3) (NM_003950) Human Tagged Lenti ORF Clone
Tag:	Myc-DDK
Symbol:	Proteinase Activated Receptor 4
Synonyms:	PAR4
Mammalian Cell Selection:	None
Vector:	pLenti-C-Myc-DDK (PS100064)
E. coli Selection:	Chloramphenicol (34 ug/mL)
ORF Nucleotide Sequence:	The ORF insert of this clone is exactly the same as(RC210404).
Restriction Sites:	SgfI-MluI
Cloning Scheme:	

Cloning sites used for ORF Shuttling:



* The last codon before the Stop codon of the ORF.

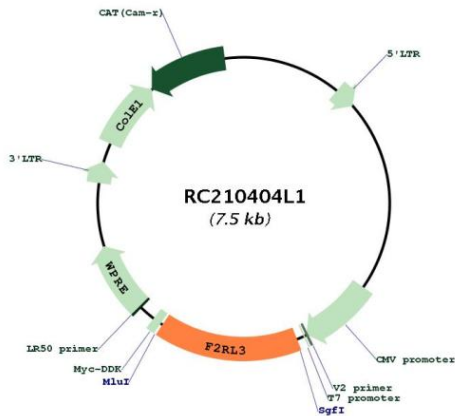
ACCN:	NM_003950
ORF Size:	1155 bp



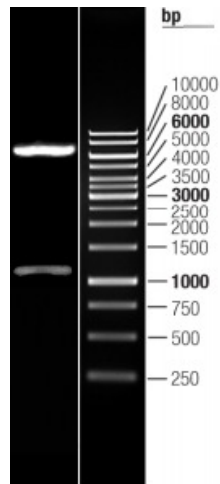
[View online >](#)

OTI Disclaimer:	The molecular sequence of this clone aligns with the gene accession number as a point of reference only. However, individual transcript sequences of the same gene can differ through naturally occurring variations (e.g. polymorphisms), each with its own valid existence. This clone is substantially in agreement with the reference, but a complete review of all prevailing variants is recommended prior to use. More info
OTI Annotation:	This clone was engineered to express the complete ORF with an expression tag. Expression varies depending on the nature of the gene.
Components:	The ORF clone is ion-exchange column purified and shipped in a 2D barcoded Matrix tube containing 10ug of transfection-ready, dried plasmid DNA (reconstitute with 100 ul of water).
Reconstitution Method:	<ol style="list-style-type: none">1. Centrifuge at 5,000xg for 5min.2. Carefully open the tube and add 100ul of sterile water to dissolve the DNA.3. Close the tube and incubate for 10 minutes at room temperature.4. Briefly vortex the tube and then do a quick spin (less than 5000xg) to concentrate the liquid at the bottom.5. Store the suspended plasmid at -20°C. The DNA is stable for at least one year from date of shipping when stored at -20°C.
RefSeq:	NM_003950.2
RefSeq Size:	2731 bp
RefSeq ORF:	1158 bp
Locus ID:	9002
UniProt ID:	Q96RI0
Cytogenetics:	19p13.11
Domains:	7tm_1
Protein Families:	Druggable Genome, GPCR, Transmembrane
Protein Pathways:	Neuroactive ligand-receptor interaction
MW:	41.13 kDa
Gene Summary:	This gene encodes a member of the protease-activated receptor subfamily, part of the G-protein coupled receptor 1 family of proteins. The encoded receptor is proteolytically processed to reveal an extracellular N-terminal tethered ligand that binds to and activates the receptor. This receptor plays a role in blood coagulation, inflammation and response to pain. Hypomethylation at this gene may be associated with lung cancer in human patients. [provided by RefSeq, Sep 2016]

Product images:



Circular map for RC210404L1



Double digestion of RC210404L1 using SgfI and MluI