

Product datasheet for RC210404

Proteinase Activated Receptor 4 (F2RL3) (NM_003950) Human Tagged ORF Clone

Product data:

Product Type:	Expression Plasmids
Product Name:	Proteinase Activated Receptor 4 (F2RL3) (NM_003950) Human Tagged ORF Clone
Tag:	Myc-DDK
Symbol:	Proteinase Activated Receptor 4
Synonyms:	PAR4
Mammalian Cell Selection:	Neomycin
Vector:	pCMV6-Entry (PS100001)
E. coli Selection:	Kanamycin (25 ug/mL)
ORF Nucleotide Sequence:	>RC210404 representing NM_003950 Red=Cloning site Blue=ORF Green=Tags(s)

TTTTGTAATACGACTCACTATAGGGCGGCCGGAATTCGTCGACTGGATCCGGTACCGAGGAGATCTGCC
GCC**CGATCGCC**

ATGTGGGGGGCAGTCTCCTGTGGCCCTGGTCTGGGGTTCAGCCTGTCTGGCGGCACCCAGACCCCCA
GCGTCTACGACGAGAGCGGGAGCACCGGAGGTGGTATGACAGCACGCCCTCAATCCTGCCTGCCCCCG
CGGCTACCGAGGCAAGTCTGTGCAATGACAGTGACACCCTGGAGCTCCCGACAGCTCACGGGCACTG
CTTCTGGGCTGGGTGCCACCAGGCTGGTCCCGCCCTATGGGCTGGTCTGGTGGTGGGCTGCCGG
CCAATGGGCTGGGCTGTGGGTGCTGGCCACGCAGGCACCTCGGCTGCCCTCCACCATGTGCTGATGAA
CCTCGCGGCTGCTGACCTCCTGCTGGCCCTGGCGCTGCCCGCGGATCGCCTACCACCTGCGTGGCCAG
CGCTGGCCCTTCGGGGAGGCCGCTGCCGCTGGCCACGGCCGCACTCTATGGTACATGTATGGCTCAG
TGCTGCTGCTGGCCGCCGTGAGCCTGGATCGCTACCTGGCCCTGGTGCACCCGCTGCGGGCCCGGCCCT
GCGTGGCCGGCGCCTGGCCCTTGGACTCTGCATGGCTGCTGGCTCATGGCGGCCGCCCTGGCACTGCC
CTGACACTGCAGCGGCAGACCTCCGGCTGGCGGCTCCGATCGCGTCTGCTGCCATGACGCGTGGCC
TGGACGCACAGGCTCCCACTGGCAACCGCCTCACCTGCTGGCGCTGTTGGGCTGTTTCTGCCCT
GCTGGCCATGCTGCTGTGCTACGGGGCCACCCTGCACACGCTGGCGGCCAGCGGCCGCGCTACGGCCAC
GCGCTGAGGCTGACCGCAGTGGTCTGGCTCCGCCGTGGCCTTCTTCTGCGCCAGCAACCTGCTGCTGC
TGCTGCATTACTCGGACCCGAGCCAGCGCTGGGGCAACCTCTATGGTCCCTACGTGCCAGCCTGGC
GCTGAGCACCCCTCAACAGCTGCGTGGATCCCTTACTACTACTACGTGTGCGCCGAGTTAGGGACAAG
GTGCGGGCAGGGCTTTCCAACGGTTCGCCGGGGACACCGTGGCCTCCAAGGCTCTGCGGAAGGGGGCA
GCCGGGCATGGGCACCCACTCTCTTTGCTCCAG

ACGCGTACGCGGCCGCTCGAGCAGAACTCATCTCAGAAGAGGATCTGGCAGCAATGATATCCTGGATT
ACAAGGATGACGACGATAAGGTTTAA



[View online »](#)

Reconstitution Method:

1. Centrifuge at 5,000xg for 5min.
2. Carefully open the tube and add 100ul of sterile water to dissolve the DNA.
3. Close the tube and incubate for 10 minutes at room temperature.
4. Briefly vortex the tube and then do a quick spin (less than 5000xg) to concentrate the liquid at the bottom.
5. Store the suspended plasmid at -20°C. The DNA is stable for at least one year from date of shipping when stored at -20°C.

RefSeq: [NM_003950.4](#)

RefSeq Size: 2731 bp

RefSeq ORF: 1158 bp

Locus ID: 9002

UniProt ID: [Q96R10](#)

Cytogenetics: 19p13.11

Domains: 7tm_1

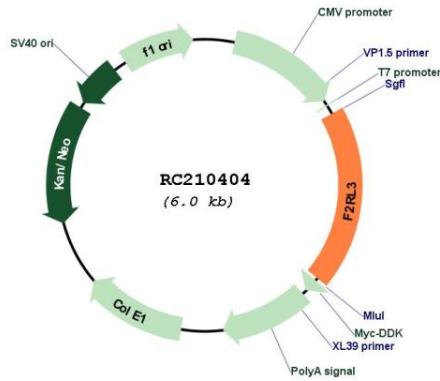
Protein Families: Druggable Genome, GPCR, Transmembrane

Protein Pathways: Neuroactive ligand-receptor interaction

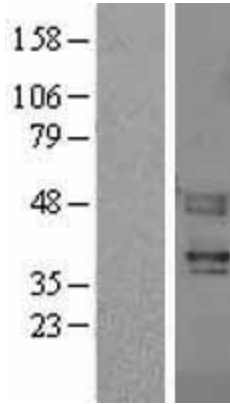
MW: 41.13 kDa

Gene Summary: This gene encodes a member of the protease-activated receptor subfamily, part of the G-protein coupled receptor 1 family of proteins. The encoded receptor is proteolytically processed to reveal an extracellular N-terminal tethered ligand that binds to and activates the receptor. This receptor plays a role in blood coagulation, inflammation and response to pain. Hypomethylation at this gene may be associated with lung cancer in human patients. [provided by RefSeq, Sep 2016]

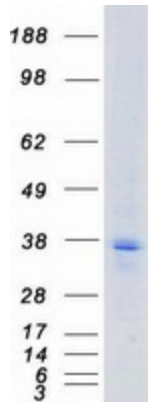
Product images:



Circular map for RC210404



Western blot validation of overexpression lysate (Cat# [LY401297]) using anti-DDK antibody (Cat# [TA50011-100]). Left: Cell lysates from untransfected HEK293T cells; Right: Cell lysates from HEK293T cells transfected with RC210404 using transfection reagent MegaTran 2.0 (Cat# [TT210002]).



Coomassie blue staining of purified F2RL3 protein (Cat# [TP310404]). The protein was produced from HEK293T cells transfected with F2RL3 cDNA clone (Cat# RC210404) using MegaTran 2.0 (Cat# [TT210002]).