

Product datasheet for **RC210402L1V**

WISP1 (CCN4) (NM_003882) Human Tagged ORF Clone Lentiviral Particle

Product data:

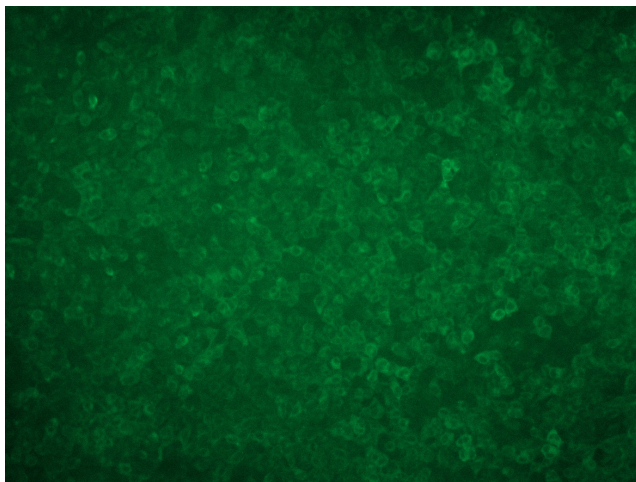
Product Type:	Lentiviral Particles
Product Name:	WISP1 (CCN4) (NM_003882) Human Tagged ORF Clone Lentiviral Particle
Symbol:	CCN4
Synonyms:	WISP1; WISP1-OT1; WISP1-UT1; WISP1c; WISP1i; WISP1tc
Mammalian Cell Selection:	None
Vector:	pLenti-C-Myc-DDK (PS100064)
Tag:	Myc-DDK
ACCN:	NM_003882
ORF Size:	1101 bp
ORF Nucleotide Sequence:	The ORF insert of this clone is exactly the same as(RC210402).
OTI Disclaimer:	The molecular sequence of this clone aligns with the gene accession number as a point of reference only. However, individual transcript sequences of the same gene can differ through naturally occurring variations (e.g. polymorphisms), each with its own valid existence. This clone is substantially in agreement with the reference, but a complete review of all prevailing variants is recommended prior to use. More info
OTI Annotation:	This clone was engineered to express the complete ORF with an expression tag. Expression varies depending on the nature of the gene.
RefSeq:	NM_003882.2
RefSeq Size:	5194 bp
RefSeq ORF:	1104 bp
Locus ID:	8840
UniProt ID:	O95388
Cytogenetics:	8q24.22
Domains:	IB, tsp_1, VWC, CT, Cys_knot



[View online »](#)

Protein Families:	Adult stem cells, Druggable Genome, Embryonic stem cells, ES Cell Differentiation/IPS, Secreted Protein, Stem cell relevant signaling - DSL/Notch pathway, Stem cell relevant signaling - Wnt Signaling pathway
MW:	40.3 kDa
Gene Summary:	This gene encodes a member of the WNT1 inducible signaling pathway (WISP) protein subfamily, which belongs to the connective tissue growth factor (CTGF) family. WNT1 is a member of a family of cysteine-rich, glycosylated signaling proteins that mediate diverse developmental processes. The CTGF family members are characterized by four conserved cysteine-rich domains: insulin-like growth factor-binding domain, von Willebrand factor type C module, thrombospondin domain and C-terminal cystine knot-like domain. This gene may be downstream in the WNT1 signaling pathway that is relevant to malignant transformation. It is expressed at a high level in fibroblast cells, and overexpressed in colon tumors. The encoded protein binds to decorin and biglycan, two members of a family of small leucine-rich proteoglycans present in the extracellular matrix of connective tissue, and possibly prevents the inhibitory activity of decorin and biglycan in tumor cell proliferation. It also attenuates p53-mediated apoptosis in response to DNA damage through activation of the Akt kinase. It is 83% identical to the mouse protein at the amino acid level. Multiple alternatively spliced transcript variants have been identified. [provided by RefSeq, Mar 2011]

Product images:



[RC210402L1] was used to prepare Lentiviral particles using [TR30037] packaging kit. HEK293T cells were transduced with RC210402L1V particle to overexpress human CCN4-Myc-DDK fusion protein.