

Product datasheet for **RC210402**

CCN4 (NM_003882) Human Tagged ORF Clone

Product data:

Product Type:	Expression Plasmids
Product Name:	CCN4 (NM_003882) Human Tagged ORF Clone
Tag:	Myc-DDK
Symbol:	CCN4
Synonyms:	WISP1; WISP1-OT1; WISP1-UT1; WISP1c; WISP1j; WISP1tc
Mammalian Cell Selection:	Neomycin
Vector:	pCMV6-Entry (PS100001)
E. coli Selection:	Kanamycin (25 ug/mL)
ORF Nucleotide Sequence:	>RC210402 ORF sequence Red=Cloning site Blue=ORF Green=Tags(s)

TTTTGTAATACGACTCACTATAGGGCGGCCGGAATTCGTCGACTGGATCCGGTACCGAGGAGATCTGCC
GCC**CGATCGCC**

ATGAGGTGGTTCCTGCCCTGGACGCTGGCAGCAGTGACAGCAGCAGCCGCCAGCACCGTCTGGCCACGG
CCCTCTCTCCAGCCCCTACGACCATGGACTTTACCCAGCTCCACTGGAGGACACCTCCTCACGCCCCCA
ATTCTGCAAGTGGCCATGTGAGTGCCCGCCATCCCACCCCGCTGCCCGTGGGGTGCAGCCTCATCACA
GATGGCTGTGAGTGTGTAAGATGTGCGCTCAGCAGCTTGGGGACAACGACGGAGGCTGCCATCTGTG
ACCCCCACGGGGCCTCTACTGTGACTACAGCGGGACC GCCCGAGGTACGCAATAGGAGTGTGTCACA
GGTGGTCGGTGTGGGCTGCGTCCGGATGGGGTGCCTACAACAACGGCCAGTCCTCCAGCCTAACTGC
AAGTACAACGACGTCATCGACGCGCGGTGGGCTGCACACCACTGTGCTCCGAGTGCGCCCCCGC
GTCTCTGGTGCCCCACCCGCGCGCGTGAGCATACTGGCCACTGCTGTGAGCAGTGGGTATGTGAGGA
CGACGCCAAGAGGCCACGCAAGACCCGACCCCGTGACACAGGAGCCTTCGATGCTGTGGGTGAGGTGGAG
GCATGGCACAGGAACGATAGCCTACACAAGCCCCTGGAGCCCTTGCTCCACCAGCTGCGGCCTGGGG
TCTCCACTCGGATCTCCAATGTTAACGCCAGTGTGGCTGAGCAAGAGAGCCGCTCTGCAACTTGCG
GCCATGCGATGTGGACATCCATACTCATTAAAGCAGGAAGAAGTGTCTGGCTGTGTACCAGCCAGAG
GCATCCATGAACCTCACACTTGGGGTGCATCAGCACACGCTCCTATCAACCCAAAGTGTGGAGTTT
GCATGGACAATAGGTGCTGCATCCCCTACAAGTCTAAGACTATCGACGTGCTTCCAGTGTCTGATGG
GCTTGGCTTCTCCCGCCAGGTCCTATGGATTAATGCCTGCTTCTGTAACCTGAGCTGTAGGAATCCCAAT
GACATCTTTGCTGACTTGAATCCTACCCTGACTTCTCAGAAATTGCCAAC

ACGCGTACGCGGCCGCTCGAGCAGAAACTCATCTCAGAAGAGGATCTGGCAGCAAATGATATCCTGGATT
ACAAGGATGACGACGATAAGGTTTAA



[View online »](#)

Protein Sequence: >RC210402 protein sequence
Red=Cloning site Green=Tags(s)

MRWFLPWTLAAVTAAAASVLTALALSPAPTTMDFTPAPLEDTSSRPQFCKWPCECPPSPPRCPLGVSLIT
 DGCECCKMCAQQLGDNCTEAAICDPHRGLYCDYSGDRPRYAIGVCAQVVGVCVLDGVRYNNGQSFQPN
 KYNCTCIDGAVGCTPLCLRVRPPRLWCPHPRRVSIPGHCEQWVEDDAKRPRKTAAPRDTGAFDAVGEVE
 AWHRNCIAYTSPWSPCSTSCGLGVSTRISNVNAQCWPEQESRLCNLRPCDVDIHTLIKAGKKLAVYQPE
 ASMNFTLAGCISTRSYQPKYCGVCMNRCIPYKSKTIDVSFQCPDGLGFSRQVLWINACFCNLSCRPNP
 DIFADLESYPDFSEIAN

TRTRPLEQKLISEEDLAANDILDYKDDDDKV

Chromatograms: https://cdn.origene.com/chromatograms/mk6374_g03.zip

Restriction Sites: SgfI-MluI

Cloning Scheme:



ACCN: NM_003882

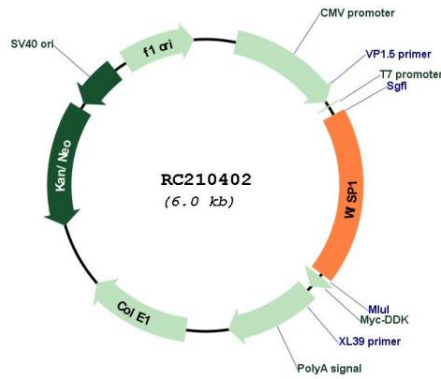
ORF Size: 1101 bp

OTI Disclaimer: Due to the inherent nature of this plasmid, standard methods to replicate additional amounts of DNA in E. coli are highly likely to result in mutations and/or rearrangements. Therefore, OriGene does not guarantee the capability to replicate this plasmid DNA. Additional amounts of DNA can be purchased from OriGene with batch-specific, full-sequence verification at a reduced cost. Please contact our customer care team at custsupport@origene.com or by calling 301.340.3188 option 3 for pricing and delivery.

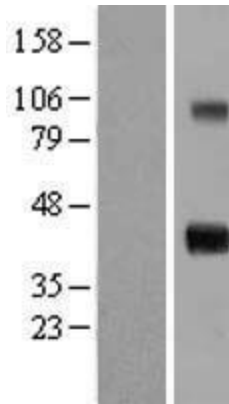
The molecular sequence of this clone aligns with the gene accession number as a point of reference only. However, individual transcript sequences of the same gene can differ through naturally occurring variations (e.g. polymorphisms), each with its own valid existence. This clone is substantially in agreement with the reference, but a complete review of all prevailing variants is recommended prior to use. [More info](#)

OTI Annotation:	This clone was engineered to express the complete ORF with an expression tag. Expression varies depending on the nature of the gene.
Components:	The ORF clone is ion-exchange column purified and shipped in a 2D barcoded Matrix tube containing 10ug of transfection-ready, dried plasmid DNA (reconstitute with 100 ul of water).
Reconstitution Method:	<ol style="list-style-type: none">1. Centrifuge at 5,000xg for 5min.2. Carefully open the tube and add 100ul of sterile water to dissolve the DNA.3. Close the tube and incubate for 10 minutes at room temperature.4. Briefly vortex the tube and then do a quick spin (less than 5000xg) to concentrate the liquid at the bottom.5. Store the suspended plasmid at -20°C. The DNA is stable for at least one year from date of shipping when stored at -20°C.
Note:	Plasmids are not sterile. For experiments where strict sterility is required, filtration with 0.22um filter is required.
RefSeq:	NM_003882.4
RefSeq Size:	5194 bp
RefSeq ORF:	1104 bp
Locus ID:	8840
UniProt ID:	O95388
Cytogenetics:	8q24.22
Domains:	IB, tsp_1, VWC, CT, Cys_knot
Protein Families:	Adult stem cells, Druggable Genome, Embryonic stem cells, ES Cell Differentiation/IPS, Secreted Protein, Stem cell relevant signaling - DSL/Notch pathway, Stem cell relevant signaling - Wnt Signaling pathway
MW:	40.3 kDa
Gene Summary:	This gene encodes a member of the WNT1 inducible signaling pathway (WISP) protein subfamily, which belongs to the connective tissue growth factor (CTGF) family. WNT1 is a member of a family of cysteine-rich, glycosylated signaling proteins that mediate diverse developmental processes. The CTGF family members are characterized by four conserved cysteine-rich domains: insulin-like growth factor-binding domain, von Willebrand factor type C module, thrombospondin domain and C-terminal cystine knot-like domain. This gene may be downstream in the WNT1 signaling pathway that is relevant to malignant transformation. It is expressed at a high level in fibroblast cells, and overexpressed in colon tumors. The encoded protein binds to decorin and biglycan, two members of a family of small leucine-rich proteoglycans present in the extracellular matrix of connective tissue, and possibly prevents the inhibitory activity of decorin and biglycan in tumor cell proliferation. It also attenuates p53-mediated apoptosis in response to DNA damage through activation of the Akt kinase. It is 83% identical to the mouse protein at the amino acid level. Multiple alternatively spliced transcript variants have been identified. [provided by RefSeq, Mar 2011]

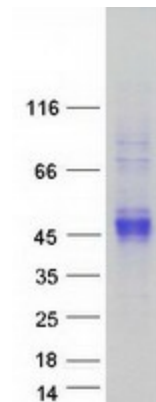
Product images:



Circular map for RC210402



Western blot validation of overexpression lysate (Cat# [LY418374]) using anti-DDK antibody (Cat# [TA50011-100]). Left: Cell lysates from untransfected HEK293T cells; Right: Cell lysates from HEK293T cells transfected with RC210402 using transfection reagent MegaTran 2.0 (Cat# [TT210002]).



Coomassie blue staining of purified CCN4 protein (Cat# [TP310402]). The protein was produced from HEK293T cells transfected with CCN4 cDNA clone (Cat# RC210402) using MegaTran 2.0 (Cat# [TT210002]).