

## Product datasheet for **RC210398**

### p53 DINP1 (TP53INP1) (NM\_033285) Human Tagged ORF Clone

#### Product data:

|                           |   |
|---------------------------|---|
| Product Type:             | Expression Plasmids   |
| Product Name:             | p53 DINP1 (TP53INP1) (NM_033285) Human Tagged ORF Clone                     |
| Tag:                      | Myc-DDK   |
| Symbol:                   | p53 DINP1   |
| Synonyms:                 | p53DINP1; SIP; Teap; TP53DINP1; TP53INP1A; TP53INP1B                        |
| Mammalian Cell Selection: | Neomycin  |
| Vector:                   | pCMV6-Entry (PS100001)  |
| E. coli Selection:        | Kanamycin (25 ug/mL)  |
| ORF Nucleotide Sequence:  | >RC210398 representing NM_033285<br>Red=Cloning site Blue=ORF Green=Tags(s) |

TTTTGTAATACGACTCACTATAGGGCGGCCGGAATTCGTCGACTGGATCCGGTACCGAGGAGATCTGCC  
GCC**CGATCGCC**

ATGTTCCAGAGGCTGAATAAAATGTTTGTGGGTGAAGTCAGTTCTTCTCCAACCAAGAACCAGAATTCA  
ATGAGAAAGAAGATGATGAATGGATTCTTGTTGACTTCATAGATACTTGCACTGGTTTCTCAGCAGAAGA  
AGAAGAAGAAGAGGAGGACATCAGTGAAGAGTCACCTACTGAGCACCTTCAGTCTTTCTGTTTACCG  
GCATCTCTTGAGTGCTTGGCTGATACAAGTGATTCCTGCTTTCTCCAGTTTGAGTCATGTCCAATGGAGG  
AGAGCTGGTTTATCACCCACCCCATGTTTACTGCAGGTGGATTAACCACTATCAAGGTGAAACAAG  
TCCTATGGAAAACCTTCTCATTGAACATCCCAGCATGTCTGTCTATGCTGTGCATAACTCCTGCCCTGGT  
CTCAGTGAGGCCACCCGTGGGACTGATGAATTACATAGCCCAAGTAGTCCAGAGTGGAAGCTCAAATG  
AAATGGGGCAGCATATTCATTGTTATGTTGCAGCTCTTGCTGCTCATACAACCTTTCTGGAACAACCCAA  
GAGCTTTCGCCCTTCCCAGTGGATAAAAGAACACAGTGAAGACAGCCTCTTAACAGAAATAGCCTTCGT  
CGCCAAAATCTTACCAGGATGGCCACCCTCGCAAGTCAAGCACAATGGCTGGGTTGTTTCATCAGCCCT  
GCCCGCTCAGTACAATTAC

**ACGCGT**ACGCGGCCGCTCGAGCAGAACTCATCTCAGAAGAGGATCTGGCAGCAAATGATATCCTGGATT  
ACAAGGATGACGACGATAAGGTTTAA



[View online »](#)

**Protein Sequence:** >RC210398 representing NM\_033285  
Red=Cloning site Green=Tags(s)

MFQRLNKMVFGEVSSSSNQEPFNEKEDEWILVDFIDTCTGFSAEEEEEEEDISEESPTEHPSVFSCLP  
 ASLECLADTSDSCFLQFESCPMEESWFIITPPCF TAGGLTTIKVETSPMENLLIEHPSMSVYAVHNPCPG  
 LSEATRGTDELHSPSSPRVEAQNEMGQHIHCYVAALAAHTTFLEQPKSFRPSQWIKHSERQPLNRNSLR  
 RQNLTRDCHPRQVKHNGWVVHQPCPRQYNY

TRTRPLEQKLISEEDLAANDILDYKDDDDKV

**Chromatograms:** [https://cdn.origene.com/chromatograms/mg4024\\_f02.zip](https://cdn.origene.com/chromatograms/mg4024_f02.zip)

**Restriction Sites:** SgfI-MluI

**Cloning Scheme:**

Cloning sites used for ORF Shuttling:



\* The last codon before the Stop codon of the ORF

**ACCN:** NM\_033285

**ORF Size:** 720 bp

**OTI Disclaimer:** The molecular sequence of this clone aligns with the gene accession number as a point of reference only. However, individual transcript sequences of the same gene can differ through naturally occurring variations (e.g. polymorphisms), each with its own valid existence. This clone is substantially in agreement with the reference, but a complete review of all prevailing variants is recommended prior to use. [More info](#)

**OTI Annotation:** This clone was engineered to express the complete ORF with an expression tag. Expression varies depending on the nature of the gene.

**Components:** The ORF clone is ion-exchange column purified and shipped in a 2D barcoded Matrix tube containing 10ug of transfection-ready, dried plasmid DNA (reconstitute with 100 ul of water).

**Reconstitution Method:**

1. Centrifuge at 5,000xg for 5min.
2. Carefully open the tube and add 100ul of sterile water to dissolve the DNA.
3. Close the tube and incubate for 10 minutes at room temperature.
4. Briefly vortex the tube and then do a quick spin (less than 5000xg) to concentrate the liquid at the bottom.
5. Store the suspended plasmid at -20°C. The DNA is stable for at least one year from date of shipping when stored at -20°C.

**RefSeq:** [NM\\_033285.4](#)

**RefSeq Size:** 5587 bp

**RefSeq ORF:** 723 bp

**Locus ID:** 94241

**UniProt ID:** [Q96A56](#)

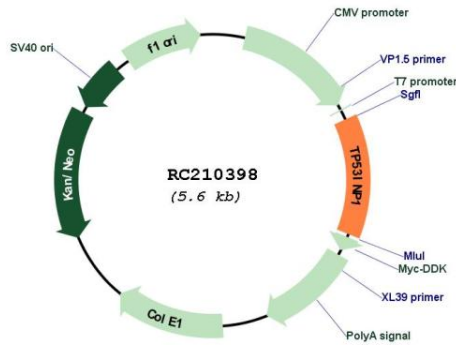
**Cytogenetics:** 8q22.1

**Protein Families:** Druggable Genome

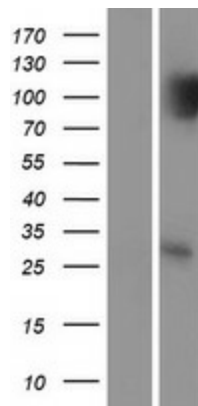
**MW:** 27.2 kDa

**Gene Summary:** Antiproliferative and proapoptotic protein involved in cell stress response which acts as a dual regulator of transcription and autophagy. Acts as a positive regulator of autophagy. In response to cellular stress or activation of autophagy, relocates to autophagosomes where it interacts with autophagosome-associated proteins GABARAP, GABARAPL1/L2, MAP1LC3A/B/C and regulates autophagy. Acts as an antioxidant and plays a major role in p53/TP53-driven oxidative stress response. Possesses both a p53/TP53-independent intracellular reactive oxygen species (ROS) regulatory function and a p53/TP53-dependent transcription regulatory function. Positively regulates p53/TP53 and p73/TP73 and stimulates their capacity to induce apoptosis and regulate cell cycle. In response to double-strand DNA breaks, promotes p53/TP53 phosphorylation on 'Ser-46' and subsequent apoptosis. Acts as a tumor suppressor by inducing cell death by an autophagy and caspase-dependent mechanism. Can reduce cell migration by regulating the expression of SPARC.[UniProtKB/Swiss-Prot Function]

Product images:



Circular map for RC210398



Western blot validation of overexpression lysate (Cat# [LY409607]) using anti-DDK antibody (Cat# [TA50011-100]). Left: Cell lysates from untransfected HEK293T cells; Right: Cell lysates from HEK293T cells transfected with RC210398 using transfection reagent MegaTran 2.0 (Cat# [TT210002]).