

Product datasheet for RC210393

PRRX1 (NM_022716) Human Tagged ORF Clone

Product data:

Product Type:	Expression Plasmids
Product Name:	PRRX1 (NM_022716) Human Tagged ORF Clone
Tag:	Myc-DDK
Symbol:	PRRX1
Synonyms:	AGOTC; PHOX1; PMX1; PRX-1; PRX1
Mammalian Cell Selection:	Neomycin
Vector:	pCMV6-Entry (PS100001)
E. coli Selection:	Kanamycin (25 ug/mL)
ORF Nucleotide Sequence:	>RC210393 ORF sequence Red=Cloning site Blue=ORF Green=Tags(s)

TTTTGTAATACGACTCACTATAGGGCGGCCGGAATTCGTCGACTGGATCCGGTACCGAGGAGATCTGCC
GCC**CGATCGCC**

ATGACCTCCAGCTACGGGCACGTTCTGGAGCGGCAACCGGCGCTGGGCGGCCGCTTGGACAGCCCGGGCA
ACCTCGACACCCTGCAGGCGAAAAAGAATTCTCCGTCAGTCACCTGCTAGACCTGGAGGAAGCCGGGGA
CATGGTGGCGGCACAGGCGGATGAGAACGTGGGCGAGGCTGGCCGGAGCCTGCTGGAGTCGCCGGGACTC
ACCAGCGGCAGCGACACCCCGCAGCAGGACAATGACCAGCTGAACCTCAGAAGAAAAAAGAAGAGAAAGC
AGCGAAGGAATAGGACAACCTTCAATAGCAGCCAGCTGCAGGCTTGGAGCGTGTCTTTGAGCGGACACA
CTATCCTGATGCTTTTGTGCGAGAAGACCTTGCCCGCCGGTGAACCTCACCGAGGCGAGAGTGCAGGTG
TGGTTTCAGAACCGAAGAGCCAAGTTCCGAGGAATGAGAGAGCCATGCTAGCCAATAAAAAACGCTTCCC
TCCTCAAATCCTACTCAGGAGACGTGACTGCTGTGGAGCAGCCATCGTACCTCGTCTGCTCCGAGACC
CACCGATTATCTCCTGGGGACAGCGTCTCCGTACAGCGCCATGGCTACTTATTCTGCCACATGTGCC
ACAATAGCCCTGCACAGGGCATCAACATGGCCAAACAGCATTGCCAACCTGAGACTGAAGCCAAGGAAT
ATAGTTTACAGAGGAACCAGGTGCCAACAGTCAAC

ACGCGTACGCGGCCGCTCGAGCAGAACTCATCTCAGAAGAGGATCTGGCAGCAAATGATATCCTGGATT
ACAAGGATGACGACGATAAGGTTTAA



[View online »](#)

Protein Sequence: >RC210393 protein sequence
Red=Cloning site Green=Tags(s)

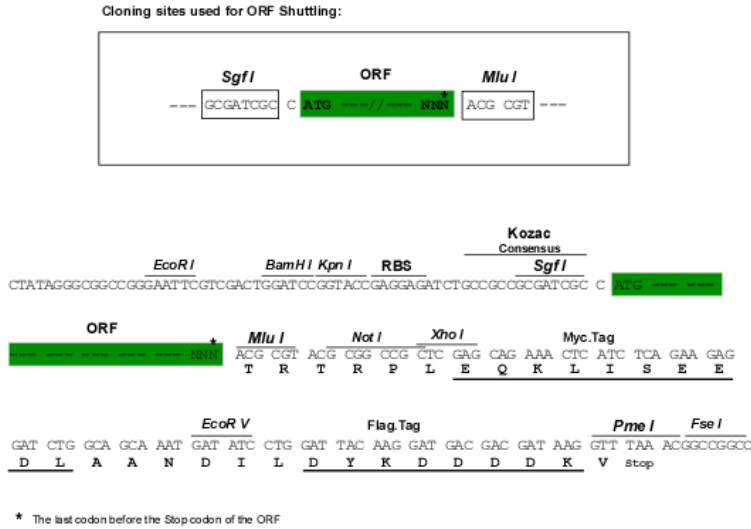
MTSSYGHVLERQPALGGRLDSPGNLDTLQAKNFSVSHLLDLEEAGDMVAAQADENVGEAGRSLLLESPGL
 TSGSDTPQQDNDQLNSEEKKRRKQRRNRTTFNSSLQALERVFERTHYPDAFVREDLARRVNLTEARVQV
 WFQNRRAKFRRNERAMLANKNASLLKSYSGDVTAVEQPIVPRPAPRPTDYLSWGTASPYSAMATYSATCA
 NNSPAQGINMANSIANLRLKAKEYSLQRNQVPTVN

TRTRPLEQKLISEEDLAANDILDYKDDDDKV

Chromatograms: https://cdn.origene.com/chromatograms/mk6379_b01.zip

Restriction Sites: SgfI-MluI

Cloning Scheme:



ACCN: NM_022716

ORF Size: 735 bp

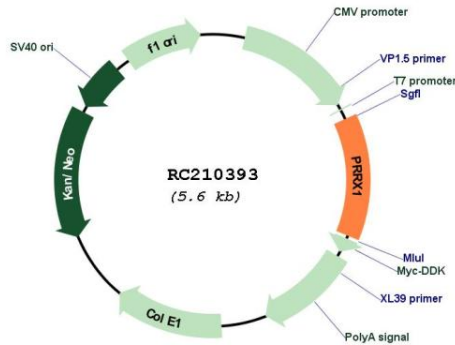
OTI Disclaimer: The molecular sequence of this clone aligns with the gene accession number as a point of reference only. However, individual transcript sequences of the same gene can differ through naturally occurring variations (e.g. polymorphisms), each with its own valid existence. This clone is substantially in agreement with the reference, but a complete review of all prevailing variants is recommended prior to use. [More info](#)

OTI Annotation: This clone was engineered to express the complete ORF with an expression tag. Expression varies depending on the nature of the gene.

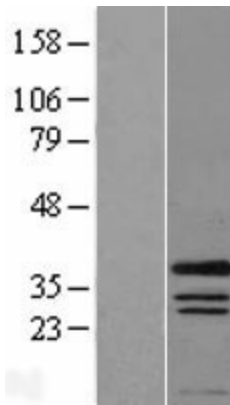
Components: The ORF clone is ion-exchange column purified and shipped in a 2D barcoded Matrix tube containing 10ug of transfection-ready, dried plasmid DNA (reconstitute with 100 ul of water).

Reconstitution Method:	<ol style="list-style-type: none">1. Centrifuge at 5,000xg for 5min.2. Carefully open the tube and add 100ul of sterile water to dissolve the DNA.3. Close the tube and incubate for 10 minutes at room temperature.4. Briefly vortex the tube and then do a quick spin (less than 5000xg) to concentrate the liquid at the bottom.5. Store the suspended plasmid at -20°C. The DNA is stable for at least one year from date of shipping when stored at -20°C.
Note:	Plasmids are not sterile. For experiments where strict sterility is required, filtration with 0.22um filter is required.
RefSeq:	NM_022716.4
RefSeq Size:	3999 bp
RefSeq ORF:	738 bp
Locus ID:	5396
UniProt ID:	P54821
Cytogenetics:	1q24.2
Protein Families:	Transcription Factors
MW:	27.3 kDa
Gene Summary:	<p>The DNA-associated protein encoded by this gene is a member of the paired family of homeobox proteins localized to the nucleus. The protein functions as a transcription co-activator, enhancing the DNA-binding activity of serum response factor, a protein required for the induction of genes by growth and differentiation factors. The protein regulates muscle creatine kinase, indicating a role in the establishment of diverse mesodermal muscle types. Alternative splicing yields two isoforms that differ in abundance and expression patterns. [provided by RefSeq, Jul 2008]</p>

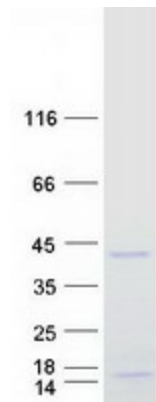
Product images:



Circular map for RC210393



Western blot validation of overexpression lysate (Cat# [LY411607]) using anti-DDK antibody (Cat# [TA50011-100]). Left: Cell lysates from untransfected HEK293T cells; Right: Cell lysates from HEK293T cells transfected with RC210393 using transfection reagent MegaTran 2.0 (Cat# [TT210002]).



Coomassie blue staining of purified PRRX1 protein (Cat# [TP310393]). The protein was produced from HEK293T cells transfected with PRRX1 cDNA clone (Cat# RC210393) using MegaTran 2.0 (Cat# [TT210002]).