

Product datasheet for RC210387L3

CFHR4 (NM_006684) Human Tagged Lenti ORF Clone

Product data:

Product Type:	Expression Plasmids
Product Name:	CFHR4 (NM_006684) Human Tagged Lenti ORF Clone
Tag:	Myc-DDK
Symbol:	CFHR4
Synonyms:	CFHL4; FHR-4; FHR4
Mammalian Cell Selection:	Puromycin
Vector:	pLenti-C-Myc-DDK-P2A-Puro (PS100092)
E. coli Selection:	Chloramphenicol (34 ug/mL)
ORF Nucleotide Sequence:	The ORF insert of this clone is exactly the same as(RC210387).
Restriction Sites:	SgfI-MluI
Cloning Scheme:	

Cloning sites used for ORF Shuttling:



* The last codon before the Stop codon of the ORF.

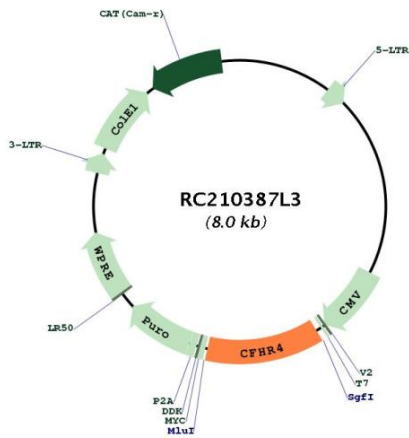
ACCN:	NM_006684
ORF Size:	993 bp



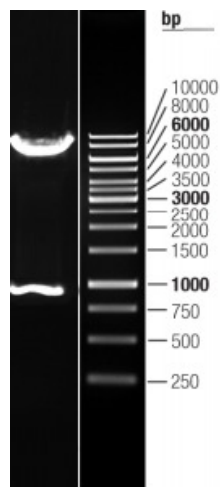
[View online »](#)

OTI Disclaimer:	The molecular sequence of this clone aligns with the gene accession number as a point of reference only. However, individual transcript sequences of the same gene can differ through naturally occurring variations (e.g. polymorphisms), each with its own valid existence. This clone is substantially in agreement with the reference, but a complete review of all prevailing variants is recommended prior to use. More info
OTI Annotation:	This clone was engineered to express the complete ORF with an expression tag. Expression varies depending on the nature of the gene.
Components:	The ORF clone is ion-exchange column purified and shipped in a 2D barcoded Matrix tube containing 10ug of transfection-ready, dried plasmid DNA (reconstitute with 100 ul of water).
Reconstitution Method:	<ol style="list-style-type: none">1. Centrifuge at 5,000xg for 5min.2. Carefully open the tube and add 100ul of sterile water to dissolve the DNA.3. Close the tube and incubate for 10 minutes at room temperature.4. Briefly vortex the tube and then do a quick spin (less than 5000xg) to concentrate the liquid at the bottom.5. Store the suspended plasmid at -20°C. The DNA is stable for at least one year from date of shipping when stored at -20°C.
RefSeq:	NM_006684.2
RefSeq Size:	1440 bp
RefSeq ORF:	996 bp
Locus ID:	10877
UniProt ID:	Q92496
Cytogenetics:	1q31.3
Protein Families:	Secreted Protein
MW:	37.3 kDa
Gene Summary:	This gene is a member of the complement factor H (CFH) gene family, and encodes one of the 5 CFH-related (CFHR) proteins. These 5 genes are closely linked to the CFH gene on chromosome 1q31-q32. The CFHRs are secreted plasma proteins synthesized primarily by the hepatocytes, and composed of highly-related short consensus repeats (SCRs). This protein enhances the cofactor activity of CFH, and is involved in complement regulation. It can associate with lipoproteins and may play a role in lipid metabolism. Alternatively spliced transcript variants encoding different isoforms (varying in the number of SCRs) have been described for this gene. [provided by RefSeq, Jan 2011]

Product images:



Circular map for RC210387L3



Double digestion of RC210387L3 using SgfI and MluI