

Product datasheet for RC210387

CFHR4 (NM_006684) Human Tagged ORF Clone

Product data:

Product Type:	Expression Plasmids
Product Name:	CFHR4 (NM_006684) Human Tagged ORF Clone
Tag:	Myc-DDK
Symbol:	CFHR4
Synonyms:	CFHL4; FHR-4; FHR4
Mammalian Cell Selection:	Neomycin
Vector:	pCMV6-Entry (PS100001)
E. coli Selection:	Kanamycin (25 ug/mL)
ORF Nucleotide Sequence:	>RC210387 ORF sequence Red=Cloning site Blue=ORF Green=Tags(s)

TTTTGTAATACGACTCACTATAGGGCGGCCGGAATTCGTCGACTGGATCCGGTACCGAGGAGATCTGCC
GCC**CGATCGCC**

ATGTTGTTACTAATCAATGTCATTCTGACCTTGTGGTTCCTGTGCTAATGGACAAGAAGTAAACCTT
GTGATTTCCAGAAATCAACATGGAGGTCTATATTATAAGAGTTTGCCTAGACTATACTTTCCAGCAGC
TGCAGGACAATCTTACTCTATTACTGTGACCAAAATTTGTGACTCCTCAGGAAGTTACTGGGATTAC
ATTCACATGCACACAAGATGGGTGGTGGCAACAGTCCCATGCCTCAGAACATGCTCAAAATCAGATATAG
AAATTGAAAATGGATTCATTTCTGAATCTTCTCTATTTATTTTAAATAAAGAAATACAATATAAATG
TAAACCAGGATATGCAACAGCAGATGAAATTCCTCAGGTTCAATTACATGTTTGCAAAATGGATGGTCA
GCACAACCAATTTGCATTAATTTGTGATATGCCTGTTTTGAGAATCCAGAGCCAAGAGTAATGGCA
TGCGGTTTAAGCTCCATGACACATTGGACTACGAATGCTACGATGGATATGAAATCAGTTATGAAACAC
CACAGGTTCCATAGTGTGGTGAAGATGGGTGGTCCCATTTCCAACATGTTATAATTCTTCAGAAAAG
TGTGGCCTCCTCCACTATTAGCAATGGTGATACCACTCCTTTCTACTAAAAGTGTATGTGCCACAGT
CAAGAGTCGAGTACCAATGCCAGTCTACTATGAACCTCAGGGTCTAATTATGTAAACATGTAGTAATGG
AGAGTGGTCGGAACCAAGATGCATACATCCATGTATAATAACTGAAGAAAACATGAATAAAAATAAC
ATACAGTTAAAAGGAAAAGTGACATAAAATATTATGCAAAAACAGGGGATACCATTGAATTTATGTGTA
AATTGGGATATAATGCGAATACATCAGTTCTATCATTTCAAGCAGTGTGTAGGGAAGGCATAGTGAATA
CCCCAGATGCGAA

ACGCGTACGCGGCCGCTCGAGCAGAACTCATCTCAGAAGAGGATCTGGCAGCAATGATATCCTGGATT
ACAAGGATGACGACGATAAGGTTTAA



[View online »](#)

Protein Sequence: >RC210387 protein sequence
Red=Cloning site Green=Tags(s)

MLLLINVILTLWVSCANGQEVKPCDFPEIQHGGLYYKSLRRLYFPAAAGQSYSYCDQNFVTPSGSYWDY
 IHCTQDGWLPTVPCLRTCSKSDIEIENGFISESSSIYILNKEIQYKCKPGYATADGNSSGSITCLQNGWS
 AQPICIKFCMPVFNRAKSNGMRFKLHDTLDYECYDGYEISYGNNTGSIVCGEDGWSHFPTCYNSEK
 CGPPPIISNGDTSFLLKVVYPQSRVEYQCQSYVELQGSNYVTCNNGEWSEPPRCIHPCIITEENMNKNN
 IQLKGKSDIKYYAKTGDTIEFMCKLGYNANTSVLSFQAVCREGIVEYPRCE

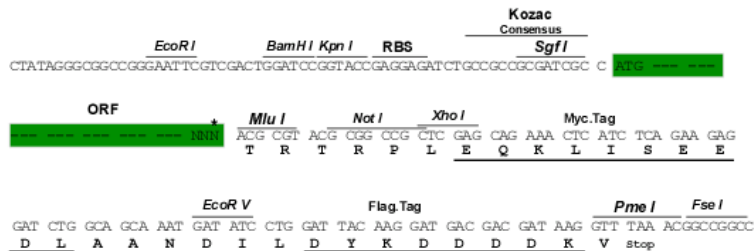
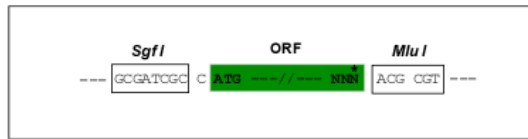
TRTRPLEQKLISEEDLAANDILDYKDDDDKV

Chromatograms: https://cdn.origene.com/chromatograms/mk6374_e03.zip

Restriction Sites: SgfI-MluI

Cloning Scheme:

Cloning sites used for ORF Shuttling:



* The last codon before the Stop codon of the ORF

ACCN: NM_006684

ORF Size: 993 bp

OTI Disclaimer: The molecular sequence of this clone aligns with the gene accession number as a point of reference only. However, individual transcript sequences of the same gene can differ through naturally occurring variations (e.g. polymorphisms), each with its own valid existence. This clone is substantially in agreement with the reference, but a complete review of all prevailing variants is recommended prior to use. [More info](#)

OTI Annotation: This clone was engineered to express the complete ORF with an expression tag. Expression varies depending on the nature of the gene.

Components: The ORF clone is ion-exchange column purified and shipped in a 2D barcoded Matrix tube containing 10ug of transfection-ready, dried plasmid DNA (reconstitute with 100 ul of water).

Reconstitution Method:

1. Centrifuge at 5,000xg for 5min.
2. Carefully open the tube and add 100ul of sterile water to dissolve the DNA.
3. Close the tube and incubate for 10 minutes at room temperature.
4. Briefly vortex the tube and then do a quick spin (less than 5000xg) to concentrate the liquid at the bottom.
5. Store the suspended plasmid at -20°C. The DNA is stable for at least one year from date of shipping when stored at -20°C.

RefSeq: [NM_006684.5](#)

RefSeq Size: 1440 bp

RefSeq ORF: 996 bp

Locus ID: 10877

UniProt ID: [Q92496](#)

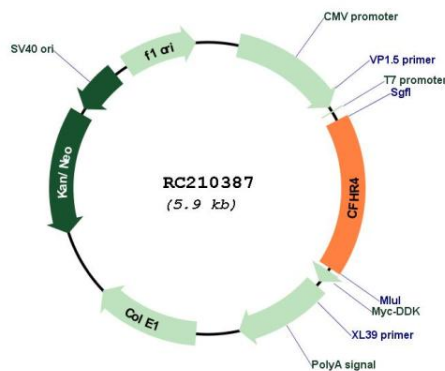
Cytogenetics: 1q31.3

Protein Families: Secreted Protein

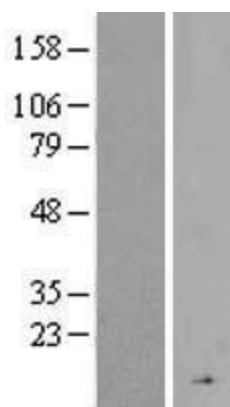
MW: 37.3 kDa

Gene Summary: This gene is a member of the complement factor H (CFH) gene family, and encodes one of the 5 CFH-related (CFHR) proteins. These 5 genes are closely linked to the CFH gene on chromosome 1q31-q32. The CFHRs are secreted plasma proteins synthesized primarily by the hepatocytes, and composed of highly-related short consensus repeats (SCRs). This protein enhances the cofactor activity of CFH, and is involved in complement regulation. It can associate with lipoproteins and may play a role in lipid metabolism. Alternatively spliced transcript variants encoding different isoforms (varying in the number of SCRs) have been described for this gene. [provided by RefSeq, Jan 2011]

Product images:



Circular map for RC210387



Western blot validation of overexpression lysate (Cat# [LY416486]) using anti-DDK antibody (Cat# [TA50011-100]). Left: Cell lysates from untransfected HEK293T cells; Right: Cell lysates from HEK293T cells transfected with RC210387 using transfection reagent MegaTran 2.0 (Cat# [TT210002]).