

Product datasheet for RC210384

Opticin (OPTC) (NM_014359) Human Tagged ORF Clone

Product data:

Product Type:	Expression Plasmids
Product Name:	Opticin (OPTC) (NM_014359) Human Tagged ORF Clone
Tag:	Myc-DDK
Symbol:	Opticin
Synonyms:	OPT
Mammalian Cell Selection:	Neomycin
Vector:	pCMV6-Entry (PS100001)
E. coli Selection:	Kanamycin (25 ug/mL)
ORF Nucleotide Sequence:	>RC210384 ORF sequence Red=Cloning site Blue=ORF Green=Tags(s)

TTTTGTAATACGACTCACTATAGGGCGCCGGGAATTCGTCGACTGGATCCGGTACCGAGGAGATCTGCC
GCC**CGGATCGCC**

ATGAGGCTCCTGGCTTTCCTGAGTCTGCTGGCCTTGGTGTGCAGGAGACAGGGACAGCTTCTCTCCAA
GGAAGGAGAGGAAGAGGAGAGAGGAGCAGATGCCAGGGAAGGCGATTTCCTTTGAAGTTCTGCCTCTGCG
GAATGATGTCCTGAACCCAGACAATATGGTGAAGTCATTGACCTGAGCAACTATGAGGAGCTCACAGAT
TATGGGGACCAACTCCCCGAGGTTAAGGTGACTAGCCTCGCTCCTGCAACCAGCATCAGTCCCGCAAGA
GCACTACGGCTCCAGGGACACCCTCGTCAAACCCACGATGACCAGACCTACTACAGCAGGGCTGCTACT
GAGTTCAGCCCAACCATGGTCTGCCACCTGCCTGGTCTGCGTGTGCCTCGGTTCTCTGTGTATTGC
GATGACATTGACCTAGAGGACATTCCTCCTCTTCTCGGAGGACTGCCTACCTGTATGCACGCTTCAACC
GCATCAGCCGTATCAGGGCCGAAGACTTCAAAGGGCTGACAAAGTTGAAGAGGATTGACCTCTCCAACA
CCTCATTTCCTCCATCGATAATGATGCCTTCCGCCTGCTACATGCCCTCCAGGACCTCATCTCCAGAG
AACCAGTTGGAAGCTCTGCCCGTGTGCCAGTGGCATTGAGTTCCTGGATGTCCGCCTAAATCGGCTCC
AGAGCTCGGGGATACAGCCTGCAGCCTCAGGGCAATGGAGAAGCTGCAGTTCCTTTACCTGTGAGACAA
CCTGCTGGATTCTATCCCGGGCCCTTTGCCCTGAGCCTGCGCTCTGTACACCTGCAGAATAACCTGATA
GAGACCATGCAGAGAGAGCTTCTCTGTGACCCCGAGGAGCACAAACACACCCGAGGCAGCTGGAAGACA
TCCGCCTGGATGGCAACCCCATCAACCTCAGCCTTCCCCAGCGCCTACTTCTGCCTGCCTCGGCTCCC
CATCGGCCGCTTACAG

ACGCGTACGCGGCCGCTCGAGCAGAACTCATCTCAGAAGAGGATCTGGCAGCAATGATATCCTGGATT
ACAAGGATGACGACGATAAGGTTTAA



[View online »](#)

Protein Sequence: >RC210384 protein sequence
Red=Cloning site Green=Tags(s)

MRLLAFLSLLALVLQETGTASLPRKERKRREEQMPREGDSFEVLPLRNDVLPNDNYGEVIDLSNYEELTD
 YGDQLPEVKVTS LAPATSI SPAKSTTAPGTPSSNPTMTRPTTAGLLLSSQPNHGLPTCLVCVCLGSSVYC
 DDIDLEDIPPLPRRTAYLYARFNRI SRIRAEDFKGLTKLKRIDLNNLISIDNDAFRLHALQDLILPE
 NQLEALPVLPSGIEFLDVRLNRLQSSGIQPAAFRAMEKLQFLYLSNLLDSIPGPLPLSLRSVHLQNNLI
 ETMQRDVFCDP EEHKHTRRQLEDIRLDGNPINLSLFP S AYFCLPRLPIGRFT

TRTRPLEQKLISEEDLAANDILDYKDDDDKV

Chromatograms: https://cdn.origene.com/chromatograms/mk6379_d12.zip

Restriction Sites: SgfI-MluI

Cloning Scheme:



ACCN: NM_014359

ORF Size: 996 bp

OTI Disclaimer: The molecular sequence of this clone aligns with the gene accession number as a point of reference only. However, individual transcript sequences of the same gene can differ through naturally occurring variations (e.g. polymorphisms), each with its own valid existence. This clone is substantially in agreement with the reference, but a complete review of all prevailing variants is recommended prior to use. [More info](#)

OTI Annotation: This clone was engineered to express the complete ORF with an expression tag. Expression varies depending on the nature of the gene.

Components: The ORF clone is ion-exchange column purified and shipped in a 2D barcoded Matrix tube containing 10ug of transfection-ready, dried plasmid DNA (reconstitute with 100 ul of water).

Reconstitution Method:

1. Centrifuge at 5,000xg for 5min.
2. Carefully open the tube and add 100ul of sterile water to dissolve the DNA.
3. Close the tube and incubate for 10 minutes at room temperature.
4. Briefly vortex the tube and then do a quick spin (less than 5000xg) to concentrate the liquid at the bottom.
5. Store the suspended plasmid at -20°C. The DNA is stable for at least one year from date of shipping when stored at -20°C.

RefSeq: [NM_014359.4](#)

RefSeq Size: 1444 bp

RefSeq ORF: 999 bp

Locus ID: 26254

UniProt ID: [Q9UBM4](#)

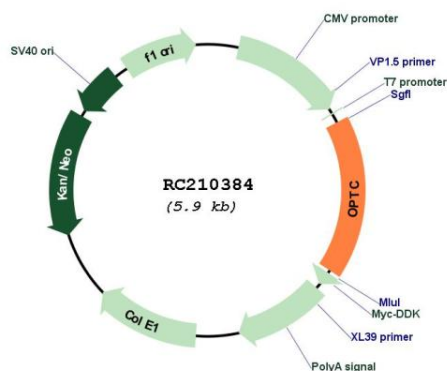
Cytogenetics: 1q32.1

Protein Families: Secreted Protein

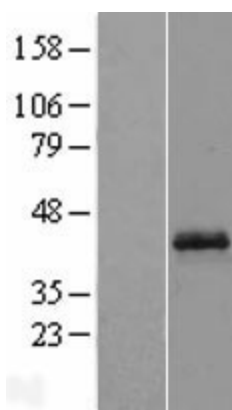
MW: 37.3 kDa

Gene Summary: Opticin belongs to class III of the small leucine-rich repeat protein (SLRP) family. Members of this family are typically associated with the extracellular matrix. Opticin is present in significant quantities in the vitreous of the eye and also localizes to the cornea, iris, ciliary body, optic nerve, choroid, retina, and fetal liver. Opticin may noncovalently bind collagen fibrils and regulate fibril morphology, spacing, and organization. The opticin gene is mapped to a region of chromosome 1 that is associated with the inherited eye diseases age-related macular degeneration (AMD) and posterior column ataxia with retinosa pigmentosa (AXPC1). [provided by RefSeq, Jul 2008]

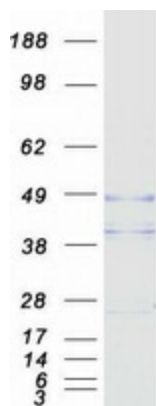
Product images:



Circular map for RC210384



Western blot validation of overexpression lysate (Cat# [LY415340]) using anti-DDK antibody (Cat# [TA50011-100]). Left: Cell lysates from untransfected HEK293T cells; Right: Cell lysates from HEK293T cells transfected with RC210384 using transfection reagent MegaTran 2.0 (Cat# [TT210002]).



Coomassie blue staining of purified OPTC protein (Cat# [TP310384]). The protein was produced from HEK293T cells transfected with OPTC cDNA clone (Cat# RC210384) using MegaTran 2.0 (Cat# [TT210002]).