

Product datasheet for RC210382

SRY (NM_003140) Human Tagged ORF Clone

Product data:

Product Type: Expression Plasmids
Product Name: SRY (NM_003140) Human Tagged ORF Clone
Tag: Myc-DDK
Symbol: SRY
Synonyms: SRXX1; SRXY1; TDF; TDY
Mammalian Cell Selection: Neomycin
Vector: pCMV6-Entry (PS100001)
E. coli Selection: Kanamycin (25 ug/mL)
ORF Nucleotide Sequence: >RC210382 ORF sequence
 Red=Cloning site Blue=ORF Green=Tags(s)

TTTTGTAATACGACTCACTATAGGGCGCCGGGAATTCGTCGACTGGATCCGGTACCGAGGAGATCTGCC
 GCC**CGATCGCC**

ATGCAATCATATGCTTCTGCTATGTTAAGCGTATTCAACAGCGATGATTACAGTCCAGCTGTGCAAGAGA
 ATATTCGCTCTCCGGAGAAGCTCTTCTTCTTTGCACTGAAAGCTGTAAGTCTAAGTATCAGTGTGA
 AACGGGAGAAAACAGTAAAGGCAACGTCCAGGATAGAGTGAAGCGACCCATGAACGCATTATCGTGTGG
 TCTCGGATCAGAGGCGCAAGATGGCTCTAGAGAATCCCAGAATCGGAACTCAGAGATCAGCAAGCAGC
 TGGGATACCAGTGGAAAATGCTTACTGAAGCCGAAAATGGCCATTCTTCCAGGAGGCACAGAAATTACA
 GGCCATGCACAGAGAGAAATACCCGAATTATAAGTATCGACCTCGTCGGAAGGCGAAGATGCTGCCGAAG
 AATTGCAGTTTGCTTCCCGCAGATCCCGCTTCGGTACTCTGCAGCGAAGTGAACCTGGACAACAGGTTGT
 ACAGGGATGACTGTACGAAAGCCACACACTCAAGAATGGAGCACCAGCTAGGCCACTTACCGCCATCAA
 CGCAGCCAGCTACCCGACGACACGGGACCCTACAGCCACTGGACAAAGCTG

ACGCGTACGCGGCCGCTCGAGCAGAACTCATCTCAGAAGAGGATCTGGCAGCAAATGATATCCTGGATT
 ACAAGGATGACGACGATAAGGTTTAA

Protein Sequence: >RC210382 protein sequence
 Red=Cloning site Green=Tags(s)

MQSYASAMLSVFNSSDDYSPAVQENIPALRRSSFLCTESCNSKYQCETGENSKGNVQDRVKRPMNAFIVW
 SRDQRRKMALENPRMRNSEISKQLGYQWKMLTEAEKWPFQEAQKLQAMHREKYPNYKYPKAKMLPK
 NCSLLPADPASVLCSEVQLDNRLYRDDCTKATHSRMEHLGHLPPINAASSPQQRDRYSHWTKL

TRTRPLEQKLISEEDLAANDILDYKDDDDKV



Chromatograms: https://cdn.origene.com/chromatograms/mk6379_a10.zip

Restriction Sites: Sgfl-MluI

Cloning Scheme:



ACCN: NM_003140

ORF Size: 612 bp

OTI Disclaimer: Due to the inherent nature of this plasmid, standard methods to replicate additional amounts of DNA in E. coli are highly likely to result in mutations and/or rearrangements. Therefore, OriGene does not guarantee the capability to replicate this plasmid DNA. Additional amounts of DNA can be purchased from OriGene with batch-specific, full-sequence verification at a reduced cost. Please contact our customer care team at custsupport@origene.com or by calling 301.340.3188 option 3 for pricing and delivery.

The molecular sequence of this clone aligns with the gene accession number as a point of reference only. However, individual transcript sequences of the same gene can differ through naturally occurring variations (e.g. polymorphisms), each with its own valid existence. This clone is substantially in agreement with the reference, but a complete review of all prevailing variants is recommended prior to use. [More info](#)

OTI Annotation: This clone was engineered to express the complete ORF with an expression tag. Expression varies depending on the nature of the gene.

Components: The ORF clone is ion-exchange column purified and shipped in a 2D barcoded Matrix tube containing 10ug of transfection-ready, dried plasmid DNA (reconstitute with 100 ul of water).

Reconstitution Method:

1. Centrifuge at 5,000xg for 5min.
2. Carefully open the tube and add 100ul of sterile water to dissolve the DNA.
3. Close the tube and incubate for 10 minutes at room temperature.
4. Briefly vortex the tube and then do a quick spin (less than 5000xg) to concentrate the liquid at the bottom.
5. Store the suspended plasmid at -20°C. The DNA is stable for at least one year from date of shipping when stored at -20°C.

RefSeq: [NM_003140.3](#)

RefSeq Size: 887 bp

RefSeq ORF: 615 bp

Locus ID: 6736

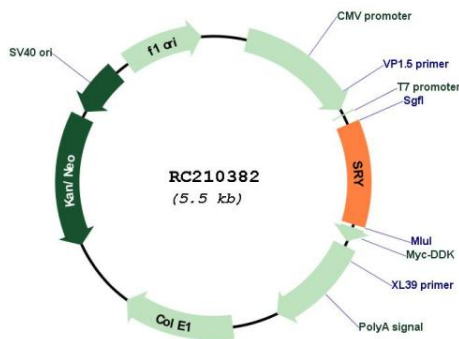
UniProt ID: [Q05066](#)

Cytogenetics: Yp11.2

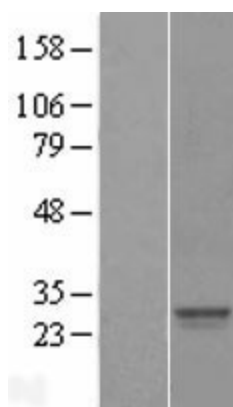
MW: 23.9 kDa

Gene Summary: This intronless gene encodes a transcription factor that is a member of the high mobility group (HMG)-box family of DNA-binding proteins. This protein is the testis-determining factor (TDF), which initiates male sex determination. Mutations in this gene give rise to XY females with gonadal dysgenesis (Swyer syndrome); translocation of part of the Y chromosome containing this gene to the X chromosome causes XX male syndrome. [provided by RefSeq, Jul 2008]

Product images:



Circular map for RC210382



Western blot validation of overexpression lysate (Cat# [LY418872]) using anti-DDK antibody (Cat# [TA50011-100]). Left: Cell lysates from untransfected HEK293T cells; Right: Cell lysates from HEK293T cells transfected with RC210382 using transfection reagent MegaTran 2.0 (Cat# [TT210002]).