

## Product datasheet for RC210372

### HOXC6 (NM\_153693) Human Tagged ORF Clone

#### Product data:

Product Type:	Expression Plasmids
Product Name:	HOXC6 (NM_153693) Human Tagged ORF Clone
Tag:	Myc-DDK
Symbol:	HOXC6
Synonyms:	CP25; HHO.C8; HOX3; HOX3C
Mammalian Cell Selection:	Neomycin
Vector:	pCMV6-Entry (PS100001)
E. coli Selection:	Kanamycin (25 ug/mL)
ORF Nucleotide Sequence:	>RC210372 representing NM_153693 Red=Cloning site Blue=ORF Green=Tags(s)

TTTTGTAATACGACTCACTATAGGGCGGCCGGAATTCGTCGACTGGATCCGGTACCGAGGAGATCTGCC  
GCC**CGATCGCC**

ATGCTCTCAAACGCAGACAAAACACCTTAGGACATAACACACAGACCTCAATCGCTCAGGATTTAGTT  
CTGAGCAGGGCAGGACTGCGCCCAGGACCAGAAAGCCAGTATCCAGATTTACCCCTGGATGCAGCGAAT  
GAATTCGCACAGTGGGGTCGGCTACGGAGCGGACCGGAGGCGCGGCCAGATCTACTCGCGTACCAG  
ACCCTGGAACGGAGAAGGAATTTCACTTCAATCGCTACCTAACGCGGCCCGCGCATCGAGATCGCCA  
ACGCGCTTTGCCTGACCGAGCGACAGATCAAAATCTGGTTCAGAACCGCCGGATGAAGTGAAAAAGA  
ATCTAATCTCACATCCACTCTCTCGGGGGCGGCGGAGGGCCACCGCCGACAGCCTGGGCGAAAAGAG  
GAAAAGCGGGAAGAGACAGAAGAGGAGAAGCAGAAAGAG

**ACGCGT**ACGCGGCCGCTCGAGCAGAACTCATCTCAGAAGAGGATCTGGCAGCAAATGATATCCTGGATT  
ACAAGGATGACGACGATAAGGTTTAA

Protein Sequence:	>RC210372 representing NM_153693 Red=Cloning site Green=Tags(s)
-------------------	--

MLSNCRQNTLGHNTQTSIAQDFSSEQGRTAPQDQKASIQIYPWMQRMNSHSGVYGADRRRRGRQIYSRYQ  
TLELEKEFHFNRYLRRRRRIEIANALCLTERQIKIWFQNRMKWKESNLTSTLSGGGGGATADSLGGKE  
EKRETEEEKQKE

**TR**TRPLEQKLISEEDLAANDILDYKDDDDKV

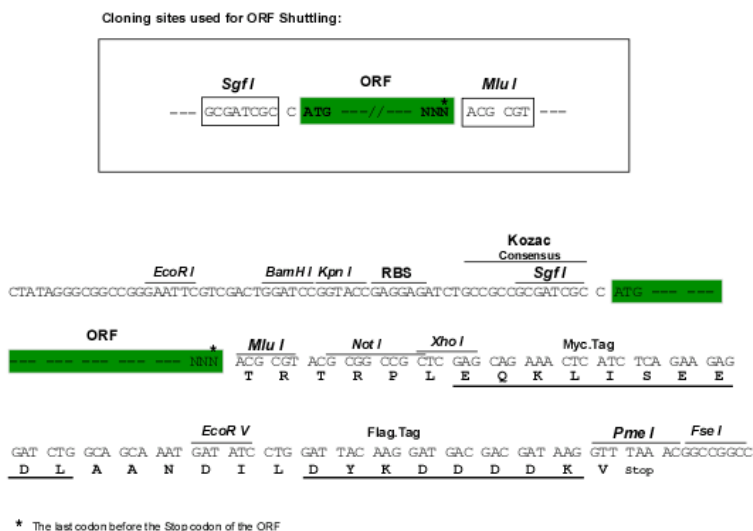
Chromatograms:	<a href="https://cdn.origene.com/chromatograms/mg2595_b01.zip">https://cdn.origene.com/chromatograms/mg2595_b01.zip</a>
----------------	---



View online »

Restriction Sites: SgfI-MluI

Cloning Scheme:



ACCN: NM\_153693

ORF Size: 459 bp

OTI Disclaimer: The molecular sequence of this clone aligns with the gene accession number as a point of reference only. However, individual transcript sequences of the same gene can differ through naturally occurring variations (e.g. polymorphisms), each with its own valid existence. This clone is substantially in agreement with the reference, but a complete review of all prevailing variants is recommended prior to use. [More info](#)

OTI Annotation: This clone was engineered to express the complete ORF with an expression tag. Expression varies depending on the nature of the gene.

Components: The ORF clone is ion-exchange column purified and shipped in a 2D barcoded Matrix tube containing 10ug of transfection-ready, dried plasmid DNA (reconstitute with 100 ul of water).

Reconstitution Method:

1. Centrifuge at 5,000xg for 5min.
2. Carefully open the tube and add 100ul of sterile water to dissolve the DNA.
3. Close the tube and incubate for 10 minutes at room temperature.
4. Briefly vortex the tube and then do a quick spin (less than 5000xg) to concentrate the liquid at the bottom.
5. Store the suspended plasmid at -20°C. The DNA is stable for at least one year from date of shipping when stored at -20°C.

RefSeq: [NM\\_153693.5](#)

RefSeq Size: 1869 bp

RefSeq ORF: 462 bp

Locus ID: 3223

UniProt ID: [P09630](#)

Cytogenetics: 12q13.13

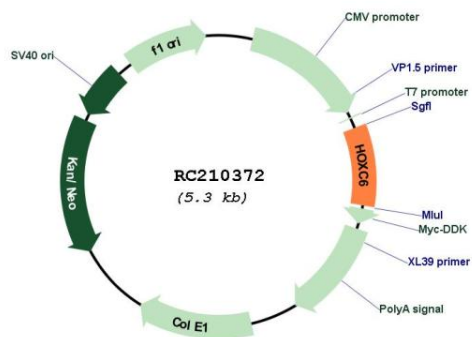
Domains: homeobox

Protein Families: Transcription Factors

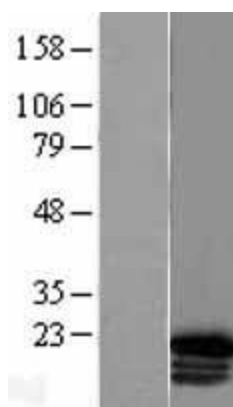
MW: 17.7 kDa

**Gene Summary:** This gene belongs to the homeobox family, members of which encode a highly conserved family of transcription factors that play an important role in morphogenesis in all multicellular organisms. Mammals possess four similar homeobox gene clusters, HOXA, HOXB, HOXC and HOXD, which are located on different chromosomes and consist of 9 to 11 genes arranged in tandem. This gene, HOXC6, is one of several HOXC genes located in a cluster on chromosome 12. Three genes, HOXC5, HOXC4 and HOXC6, share a 5' non-coding exon. Transcripts may include the shared exon spliced to the gene-specific exons, or they may include only the gene-specific exons. Alternatively spliced transcript variants encoding different isoforms have been identified for HOXC6. Transcript variant two includes the shared exon, and transcript variant one includes only gene-specific exons. [provided by RefSeq, Jul 2008]

### Product images:



Circular map for RC210372



Western blot validation of overexpression lysate (Cat# [LY403515]) using anti-DDK antibody (Cat# [TA50011-100]). Left: Cell lysates from untransfected HEK293T cells; Right: Cell lysates from HEK293T cells transfected with RC210372 using transfection reagent MegaTran 2.0 (Cat# [TT210002]).