

## Product datasheet for RC210366

### SLAMF9 (NM\_033438) Human Tagged ORF Clone

#### Product data:

**Product Type:** Expression Plasmids  
**Product Name:** SLAMF9 (NM\_033438) Human Tagged ORF Clone  
**Tag:** Myc-DDK  
**Symbol:** SLAMF9  
**Synonyms:** CD2F-10; CD2F10; CD84-H1; CD84H1; SF2001  
**Mammalian Cell Selection:** Neomycin  
**Vector:** pCMV6-Entry (PS100001)  
**E. coli Selection:** Kanamycin (25 ug/mL)  
**ORF Nucleotide Sequence:** >RC210366 ORF sequence  
 Red=Cloning site Blue=ORF Green=Tags(s)

TTTTGTAATACGACTCACTATAGGGCGGCCGGAATTCGTCGACTGGATCCGGTACCGAGGAGATCTGCC  
 GCC**CGATCGCC**

ATGTGTGCCTTTCCTTGGCTGCTTCTTCTCCTGCTGCTCCAGGAGGGCAGCCAAAGGAGACTCTGGAGAT  
 GGTGTGGATCCGAGGAAGTGGTTGCGGTCCTTCAGGAGTCCATCAGCCTCCCCCTGGAAATACCACCAGA  
 TGAAGAGGTTGAGAACATCATCTGGTCTCTCACAAAAGTCTGCCACTGTGGTCCAGGAAAGAGGGA  
 CATCCAGTACCATCATGGTGACCAATCCACACTACCAGGGCCAAGTGAAGTCTTCTGGACCCAGCTATT  
 CCCTGCATATCAGCAATCTGAGCTGGGAGGATTACAGGCTTTACCAAGCTCAAGTCAACCTGAGAACATC  
 CCAGATCTCTACCATGCAGCAGTACAATCTATGTGTCTACCGATGGCTGTGAGAGCCCAGATCACTGTG  
 AACTTTGAGAGTTCTGGGGAAGGTGCCTGCAGTATGTCCCTGGTGTGCTCTGTGGAGAAGGCAGGCATGG  
 ATATGACCTACAGCTGGCTCTCCCGGGGGATAGCACTTATACATTCCATGAAGGCCCTGTCTCAGCAC  
 ATCCTGGAGGCCGGGGACAGTGCCCTCTCTACACCTGCAGAGCCAACAACCCCATCAGCAACGTCAAGT  
 TCTTGCCCATCCCTGATGGGCCCTTCTATGCAGATCCTAACTATGCTTCTGAGAAGCCTTCAACAGCCT  
 TCTGCCTCTGGCCAAGGATTGCTCATCTTCTTGTCTTGGTAACTCTGGCCATGGGACTCTGGGTCAT  
 CCGAGTCCAGAAAAGACACAAAATGCCAAGGATGAAGAACTCATGAGAAACAGAATGAAATGAGGAAG  
 GAGGCAAAGCCTGGCTCCAGCCCTGCC

**ACGCGT**ACGCGGCCGCTCGAGCAGAAACTCATCTCAGAAGAGGATCTGGCAGCAAATGATATCCTGGATT  
 ACAAGGATGACGACGATAAGGTTTAA



[View online »](#)

**Protein Sequence:** >RC210366 protein sequence  
Red=Cloning site Green=Tags(s)

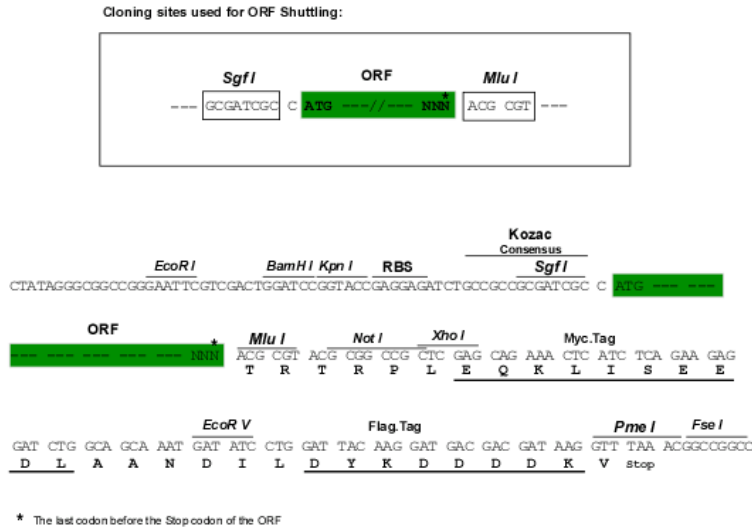
MCAFPWLLLLLLQEGSQRRLLWRWCGSEEVVAVLQESISLPLEIPPDEEVENIIWSSHKSLATVVPGKEG  
 HPATIMVTNPHYQGQVSLDPSYSLHISNL SWEDSGLYQAQVNLRTSQISTMQQYNLCVYRWLSEPQITV  
 NFESSGEGACMSMLVCSVEKAGMDMTYSWLSRGDSTYTFHEGPVLSTSWRPGDSALSYTCRANNPISNVS  
 SCPIPDGPFYADPNYASEKPSTAFCLLAKGLLIFLLLIVLAMGLWVIRVQKRHKMPRMKMLMRNRMKLRK  
 EAKPGSSPA

TRTRPLEQKLISEEDLAANDILDYKDDDDKV

**Chromatograms:** [https://cdn.origene.com/chromatograms/mk6379\\_d08.zip](https://cdn.origene.com/chromatograms/mk6379_d08.zip)

**Restriction Sites:** SgfI-MluI

**Cloning Scheme:**



**ACCN:** NM\_033438

**ORF Size:** 867 bp

**OTI Disclaimer:** The molecular sequence of this clone aligns with the gene accession number as a point of reference only. However, individual transcript sequences of the same gene can differ through naturally occurring variations (e.g. polymorphisms), each with its own valid existence. This clone is substantially in agreement with the reference, but a complete review of all prevailing variants is recommended prior to use. [More info](#)

**OTI Annotation:** This clone was engineered to express the complete ORF with an expression tag. Expression varies depending on the nature of the gene.

**Components:** The ORF clone is ion-exchange column purified and shipped in a 2D barcoded Matrix tube containing 10ug of transfection-ready, dried plasmid DNA (reconstitute with 100 ul of water).

**Reconstitution Method:**

1. Centrifuge at 5,000xg for 5min.
2. Carefully open the tube and add 100ul of sterile water to dissolve the DNA.
3. Close the tube and incubate for 10 minutes at room temperature.
4. Briefly vortex the tube and then do a quick spin (less than 5000xg) to concentrate the liquid at the bottom.
5. Store the suspended plasmid at -20°C. The DNA is stable for at least one year from date of shipping when stored at -20°C.

**RefSeq:** [NM\\_033438.2](#)

**RefSeq Size:** 1170 bp

**RefSeq ORF:** 870 bp

**Locus ID:** 89886

**UniProt ID:** [Q96A28](#)

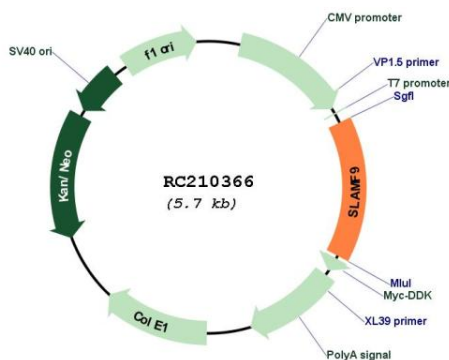
**Cytogenetics:** 1q23.2

**Protein Families:** Druggable Genome, Transmembrane

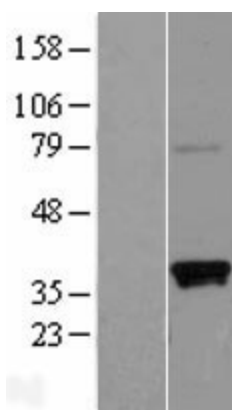
**MW:** 32.4 kDa

**Gene Summary:** This gene encodes a member of the signaling lymphocytic activation molecule family. The encoded protein is a cell surface molecule that consists of two extracellular immunoglobulin domains, a transmembrane domain and a short cytoplasmic tail that lacks the signal transduction motifs found in other family members. Alternative splicing results in multiple transcript variants.[provided by RefSeq, Apr 2009]

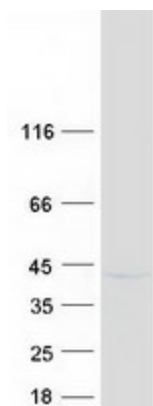
### Product images:



Circular map for RC210366



Western blot validation of overexpression lysate (Cat# [LY409497]) using anti-DDK antibody (Cat# [TA50011-100]). Left: Cell lysates from untransfected HEK293T cells; Right: Cell lysates from HEK293T cells transfected with RC210366 using transfection reagent MegaTran 2.0 (Cat# [TT210002]).



Coomassie blue staining of purified SLAMF9 protein (Cat# [TP310366]). The protein was produced from HEK293T cells transfected with SLAMF9 cDNA clone (Cat# RC210366) using MegaTran 2.0 (Cat# [TT210002]).