

Product datasheet for RC210360

B7H4 (VTCN1) (NM_024626) Human Tagged ORF Clone

Product data:

Product Type:	Expression Plasmids
Product Name:	B7H4 (VTCN1) (NM_024626) Human Tagged ORF Clone
Tag:	Myc-DDK
Symbol:	B7H4
Synonyms:	B7-H4; B7h.5; B7H4; B7S1; B7X; PRO1291; VCTN1
Mammalian Cell Selection:	Neomycin
Vector:	pCMV6-Entry (PS100001)
E. coli Selection:	Kanamycin (25 ug/mL)
ORF Nucleotide Sequence:	>RC210360 ORF sequence Red=Cloning site Blue=ORF Green=Tags(s)

TTTTGTAATACGACTCACTATAGGGCGGCCGGAATTCGTCGACTGGATCCGGTACCGAGGAGATCTGCC
GCC**CGGATCGCC**

ATGGCTTCCCTGGGGCAGATCCTCTTCTGGAGCATAATTAGCATCATCATTATTCTGGCTGGAGCAATTG
CACTCATCATTGGCTTTGGTATTTTCAGGGAGACTCCATCACAGTCACTACTGTCGCCTCAGCTGGGAA
CATTGGGGAGGATGGAATCCTGAGCTGCACTTTTGAACCTGACATCAAACCTTCTGATATCGTGATA
TGGCTGAAGGAAGGTGTTTTAGGCTTGGTCCATGAGTTCAAAGAAGGCAAAGATGAGCTGTCGGAGCAGG
ATGAAATGTTAGAGGCCGACAGCAGTGTGGTCTGATCAAGTGATAGTTGGCAATGCCTCTTTGCGGCT
GAAAAACGTGCAACTCACAGATGCTGGCACCTACAAATGTTATATCATCACTTCTAAAGGCAAGGGGAA
GCTAACCTTGAGTATAAACTGGAGCCTTCAGCATGCCGGAAGTGAATGTGGACTATAATGCCAGCTCAG
AGACCTTGCGGTGTGAGGCTCCCGATGGTTCCCCAGCCACAGTGGTCTGGGCATCCCAAGTTGACCA
GGGAGCCAACCTTCTCGGAAGTCTCCAATACCAGCTTTGAGCTGAACTCTGAGAATGTGACCATGAAGTT
GTGTCTGTGCTCTACAATGTTACGATCAACAACATACTCTGTATGATTGAAAATGACATTGCCAAAG
CAACAGGGGATACAAAGTGACAGAATCGGAGATCAAAGGCGGAGTACCTACAGCTGCTAAACTCAA
GGCTTCTGTGTGTCTTCTTTTCCATCAGCTGGGCACTTCTGCCTCTCAGCCCTACCTGATG
CTAAAA

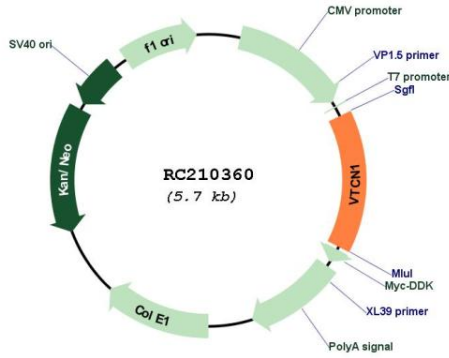
ACGCGTACGCGGCCGCTCGAGCAGAACTCATCTCAGAAGAGGATCTGGCAGCAAATGATATCCTGGATT
ACAAGGATGACGACGATAAGGTTTAA



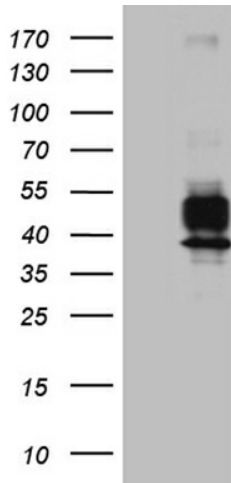
[View online »](#)

OTI Annotation:	This clone was engineered to express the complete ORF with an expression tag. Expression varies depending on the nature of the gene.
Components:	The ORF clone is ion-exchange column purified and shipped in a 2D barcoded Matrix tube containing 10ug of transfection-ready, dried plasmid DNA (reconstitute with 100 ul of water).
Reconstitution Method:	<ol style="list-style-type: none">1. Centrifuge at 5,000xg for 5min.2. Carefully open the tube and add 100ul of sterile water to dissolve the DNA.3. Close the tube and incubate for 10 minutes at room temperature.4. Briefly vortex the tube and then do a quick spin (less than 5000xg) to concentrate the liquid at the bottom.5. Store the suspended plasmid at -20°C. The DNA is stable for at least one year from date of shipping when stored at -20°C.
RefSeq:	NM_024626.4
RefSeq Size:	2652 bp
RefSeq ORF:	849 bp
Locus ID:	79679
UniProt ID:	Q7Z7D3
Cytogenetics:	1p13.1-p12
Protein Families:	Transmembrane
MW:	30.9 kDa
Gene Summary:	This gene encodes a protein belonging to the B7 costimulatory protein family. Proteins in this family are present on the surface of antigen-presenting cells and interact with ligand bound to receptors on the surface of T cells. Studies have shown that high levels of the encoded protein has been correlated with tumor progression. A pseudogene of this gene is located on chromosome 20. Multiple transcript variants encoding different isoforms have been found for this gene. [provided by RefSeq, Dec 2011]

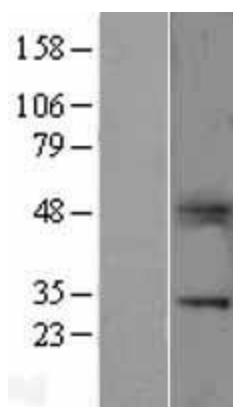
Product images:



Circular map for RC210360



HEK293T cells were transfected with the pCMV6-ENTRY control (Cat# [PS100001], Left lane) or pCMV6-ENTRY VTCN1 (Cat# RC210360, Right lane) cDNA for 48 hrs and lysed. Equivalent amounts of cell lysates (5 ug per lane) were separated by SDS-PAGE and immunoblotted with anti-VTCN1 (Cat# [TA810072])(1:2000). Positive lysates [LY403017] (100ug) and [LC403017] (20ug) can be purchased separately from OriGene.



Western blot validation of overexpression lysate (Cat# [LY403017]) using anti-DDK antibody (Cat# [TA50011-100]). Left: Cell lysates from untransfected HEK293T cells; Right: Cell lysates from HEK293T cells transfected with RC210360 using transfection reagent MegaTran 2.0 (Cat# [TT210002]).