

## Product datasheet for **RC210358**

### ART4 (NM\_021071) Human Tagged ORF Clone

#### Product data:

Product Type:	Expression Plasmids
Product Name:	ART4 (NM_021071) Human Tagged ORF Clone
Tag:	Myc-DDK
Symbol:	ART4
Synonyms:	ARTC4; CD297; DO; DO/ART4; DOK1
Mammalian Cell Selection:	Neomycin
Vector:	pCMV6-Entry (PS100001)
E. coli Selection:	Kanamycin (25 ug/mL)
ORF Nucleotide Sequence:	>RC210358 ORF sequence Red=Cloning site Blue=ORF Green=Tags(s)

TTTTGTAATACGACTCACTATAGGGCGGCCGGAATTCGTCGACTGGATCCGGTACCGAGGAGATCTGCC  
GCC**CGATCGCC**

ATGGGTCCATTGATCAACAGATGCAAGAAGATTCTTCTCCCACTACTGTACCTCCTGCAACGATGAGAA  
TCTGGCTCCTGGAGGCCTGCTGCCATTCTGCTGCTCCTCTGGCCTGCAGAGACCCACAGAGGGTTC  
TGAGGTTGCAATAAAAATCGACTTCGACTTCGACCAGGTTCTTTGATGATCAGTACCAAGGCTGTAGC  
AAACAGGTTATGGAGAACTAACTCAAGGGGATTATTTACAAAAGACATAGAAGCCAGAAGAATTATT  
TTAGGATGTGGAAAAAGCCCACTTAGCCTGGCTTAACCAAGGAAAAGTTCTACCCAGAACATGACTAC  
CACACACGCTGTGGCTATTTTGTGTTTACACATTGAACAGCAATGTTTCATTCTGACTTTACTAGAGCCATG  
GCCTCTGTTGCCAGGACTCCACAGCAGTATGAACGTTTCATTCCACTTCAAATATTTACACTACTACCTCA  
CCTCAGCAATCCAGCTGCTGAGGAAAGACAGCATCATGGAGAATGGCACTCTGTGCTATGAGGTGCATTA  
TAGGACGAAGGATGTCCACTTAAATGCCTACACAGGGGCCACCATTCGATTTGGCCAATTCCTTTCCACA  
TCCCTCCTGAAAGAAGAGGCACAGGAGTTTGGGAACCAGACACTATTTACCATATTCACCTGCCTGGGTG  
CACCTGTACAGTACTTCTCCCTCAAGAAGGAAGTCTTGATCCCTCCCTATGAGCTGTTTAAAGTTATAAA  
TATGAGCTACCACCAAGAGGAACTGGTTGCAGTTGAGGTCAACTGGGAACCTGAGCACATATAACTGT  
CAGCTGCTAAAAGCTTCCAGCAAGAAATGCATCCCTGATCCTATAGCTATTGCATCTCTCCTTTTTGA  
CCAGTGTCATCATCTTTTCCAAAAGCAGAGTA

**ACGCGT**ACGCGGCCGCTCGAGCAGAAACTCATCTCAGAAGAGGATCTGGCAGCAATGATATCCTGGATT  
ACAAGGATGACGACGATAAGGTTTAA



[View online »](#)

**Protein Sequence:** >RC210358 protein sequence  
Red=Cloning site Green=Tags(s)

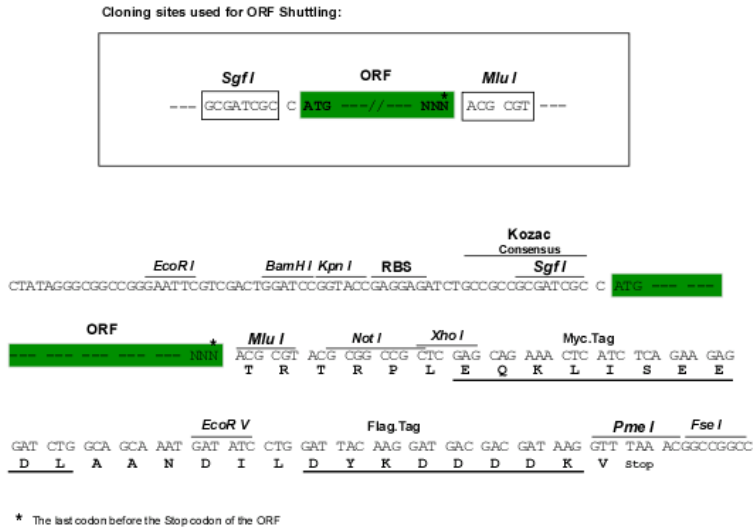
MGPLINRCKKILLPTTVPPATMRIWLLGGLLPFLLLL SGLQRPTEGSEVAIKIDFD FAPGSFDDQYQGCS  
 KQVMEKLTQGDYFTKDIEAQKNYFRMWQKAHLAWLNQGKVL PQNMTTTHAVAILFYTLNSNVHSDFT  
 ASVARTPQQYERSFHFKYLHYLLTSAIQLLRKDSIMENGLCYEVHYR TKDVHFNAYTGATIRFGQFLST  
 SLLKEEAQEFGNQTLFTIFTCLGAPVQYFSLKKEVLIPPYELFKVINMSYHPRGNWLQLRSTGNLSTYNC  
 QLLKASSKKCIPDPIAIASLSFLT SVIIFS KSRV

TRTRPLEQKLISEEDLAANDILDYKDDDDKV

**Chromatograms:** [https://cdn.origene.com/chromatograms/mk6379\\_g07.zip](https://cdn.origene.com/chromatograms/mk6379_g07.zip)

**Restriction Sites:** SgfI-MluI

**Cloning Scheme:**



**ACCN:** NM\_021071

**ORF Size:** 942 bp

**OTI Disclaimer:** The molecular sequence of this clone aligns with the gene accession number as a point of reference only. However, individual transcript sequences of the same gene can differ through naturally occurring variations (e.g. polymorphisms), each with its own valid existence. This clone is substantially in agreement with the reference, but a complete review of all prevailing variants is recommended prior to use. [More info](#)

**OTI Annotation:** This clone was engineered to express the complete ORF with an expression tag. Expression varies depending on the nature of the gene.

**Components:** The ORF clone is ion-exchange column purified and shipped in a 2D barcoded Matrix tube containing 10ug of transfection-ready, dried plasmid DNA (reconstitute with 100 ul of water).

**Reconstitution Method:**

1. Centrifuge at 5,000xg for 5min.
2. Carefully open the tube and add 100ul of sterile water to dissolve the DNA.
3. Close the tube and incubate for 10 minutes at room temperature.
4. Briefly vortex the tube and then do a quick spin (less than 5000xg) to concentrate the liquid at the bottom.
5. Store the suspended plasmid at -20°C. The DNA is stable for at least one year from date of shipping when stored at -20°C.

**RefSeq:** [NM\\_021071.1](#)

**RefSeq Size:** 1386 bp

**RefSeq ORF:** 945 bp

**Locus ID:** 420

**UniProt ID:** [Q93070](#)

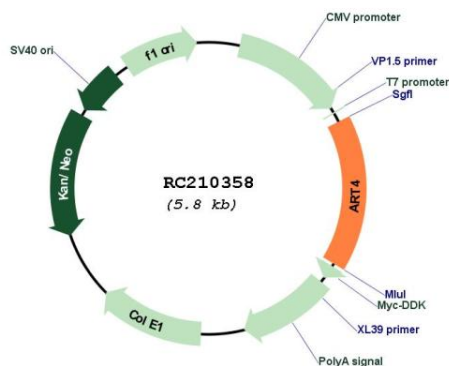
**Cytogenetics:** 12p12.3

**Domains:** ART

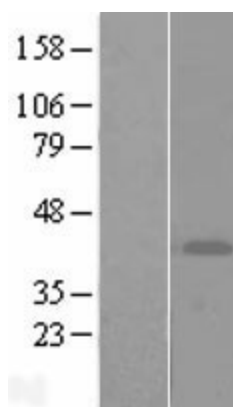
**MW:** 35.9 kDa

**Gene Summary:** This gene encodes a protein that contains a mono-ADP-ribosylation (ART) motif. It is a member of the ADP-ribosyltransferase gene family but enzymatic activity has not been demonstrated experimentally. Antigens of the Dombrock blood group system are located on the gene product, which is glycosylphosphatidylinositol-anchored to the erythrocyte membrane. Allelic variants, some of which lead to adverse transfusion reactions, are known. [provided by RefSeq, Jul 2008]

## Product images:



Circular map for RC210358



Western blot validation of overexpression lysate (Cat# [LY412105]) using anti-DDK antibody (Cat# [TA50011-100]). Left: Cell lysates from untransfected HEK293T cells; Right: Cell lysates from HEK293T cells transfected with RC210358 using transfection reagent MegaTran 2.0 (Cat# [TT210002]).