

Product datasheet for RC210355

TRIM61 (NM_001012414) Human Tagged ORF Clone

Product data:

Product Type: Expression Plasmids
Product Name: TRIM61 (NM_001012414) Human Tagged ORF Clone
Tag: Myc-DDK
Symbol: TRIM61
Synonyms: RNF35
Vector: pCMV6-Entry (PS100001)
E. coli Selection: Kanamycin (25 ug/mL)
Cell Selection: Neomycin
ORF Nucleotide Sequence: >RC210355 ORF sequence
Red=Cloning site Blue=ORF Green=Tags(s)

TTTTGTAATACGACTCACTATAGGGCGCCGGAATTCGTCGACTGGATCCGGTACCGAGGAGATCTGCC
GCC**CGATCGCC**

ATGGAATTTGTTACGGCCCTGGCTGACCTCCGAGCAGAGGCTAGCTGTCCCATCTGTCTGGACTACTTGA
AAGACCCAGTGACCATCAGCTGTGGCATAACTTCTGTCTCTCCTGCATCATTATGTCCTGGAAGGATCT
ACATGATAGTTTCCCCTGCCCTTTTGCCACTTTTGTGTCCAGAAAGGAAATTTATAAGCAATCCCAG
CTGGGTAGTTTACTGAAATTGCTAAGCACTCCAGATAAGAAGCAAGAAGAGGAAGAGGAGGAAGAGA
AGCATGTGTGTAAGAAGCATAATCAGGTTTTGACTTTCTTCTGTGAGAAAGACCTAGAGCTTTTATGTCC
AAGGTGCAGTTTGTCCACTGATCACCAGCATCACTGTGTTGGCCATAAAGAAGGCTGCCTCCTATCAT
AGGAAAAAAGTGGAGGAATACAATGCACCGTGGAGGAGAGTGGAACTAATTGAAAAAGTCATAACTA
TGCAAACAGGAAATCACTGGAAGTGAAGAAAAAGATGGAGTCTCCTTCTGTACCAGGCTGGAGTGCAG
TTGCACGATCTCGGCTCACTTCAACCTCCGCTCCCGGATCAAGCGATTCTTCTGCCTCTGGCTCC

ACGCGTACGCGGCCGCTCGAGCAGAACTCATCTCAGAAGAGGATCTGGCAGCAAATGATATCCTGGATT
ACAAGGATGACGACGATAAGGTTTAA

Protein Sequence: >RC210355 protein sequence
Red=Cloning site Green=Tags(s)

MEFVTALADLRAEASCPICLDYLDKDPVTISCGHNFCLSCIIMSWKDLHDSFPCPFCHFCPPERKFIISNPQ
LGSLTEIAKQLIRSKRKRQEEKHVCKKHNVLTFFCQKDLLELLCPRCSLSTDHQHHCWPIKKAASYH
RKKLEEYNAPWKERVLEIEKVITMQTRKSLELKKMESPSVTRLECSCTISAHFNLRPLGSSDSSASGS

TRTRPLEQKLISEEDLAANDILDYKDDDDKV

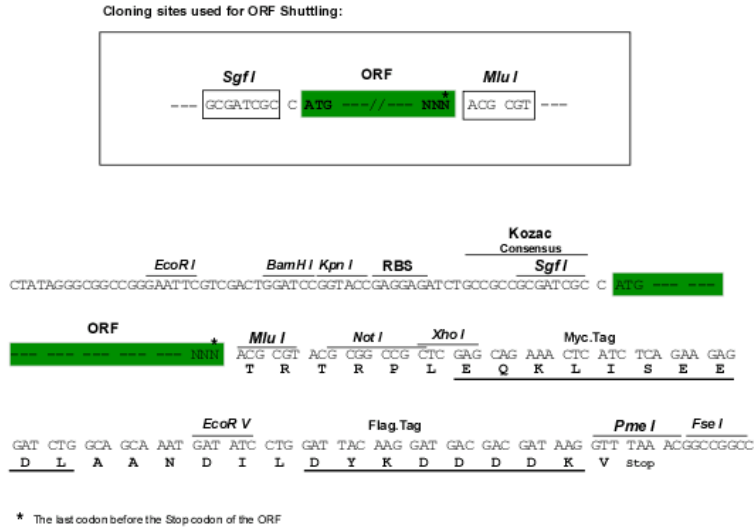
Chromatograms: https://cdn.origene.com/chromatograms/mk6367_a05.zip



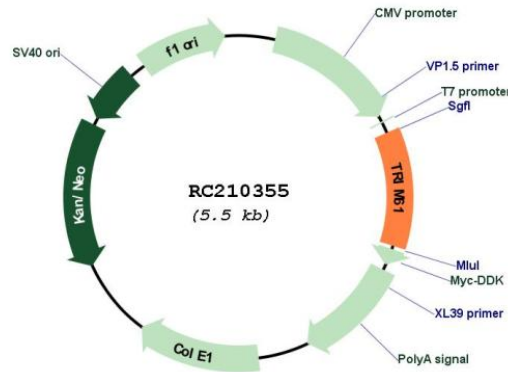
View online »

Restriction Sites: SgfI-MluI

Cloning Scheme:



Plasmid Map:



ACCN: NM_001012414

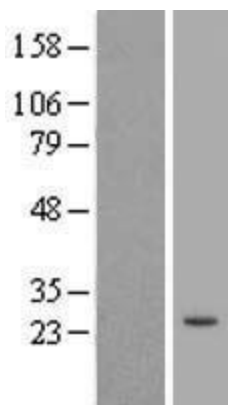
ORF Size: 627 bp

OTI Disclaimer: The molecular sequence of this clone aligns with the gene accession number as a point of reference only. However, individual transcript sequences of the same gene can differ through naturally occurring variations (e.g. polymorphisms), each with its own valid existence. This clone is substantially in agreement with the reference, but a complete review of all prevailing variants is recommended prior to use. [More info](#)

OTI Annotation: This clone was engineered to express the complete ORF with an expression tag. Expression varies depending on the nature of the gene.

RefSeq: [NM_001012414.3](#)

RefSeq Size:	1607 bp
RefSeq ORF:	630 bp
Locus ID:	391712
Protein Families:	Druggable Genome
MW:	24 kDa

Product images:

Western blot validation of overexpression lysate (Cat# [LY422852]) using anti-DDK antibody (Cat# [TA50011-100]). Left: Cell lysates from untransfected HEK293T cells; Right: Cell lysates from HEK293T cells transfected with RC210355 using transfection reagent MegaTran 2.0 (Cat# [TT210002]).