

Product datasheet for **RC210354**

ZNF385B (NM_152520) Human Tagged ORF Clone

Product data:

Product Type:	Expression Plasmids
Product Name:	ZNF385B (NM_152520) Human Tagged ORF Clone
Tag:	Myc-DDK
Symbol:	ZNF385B
Synonyms:	ZNF533
Mammalian Cell Selection:	Neomycin
Vector:	pCMV6-Entry (PS100001)
E. coli Selection:	Kanamycin (25 ug/mL)



[View online »](#)

ORF Nucleotide Sequence:

>RC210354 ORF sequence
 Red=Cloning site Blue=ORF Green=Tags(s)

TTTTGTAATACGACTCACTATAGGGCGGCCGGAATTCGTCGACTGGATCCGGTACCGAGGAGATCTGCC
 GCC**CGCATCGCC**

ATGAATATGGCAAATTTTCTACGGGGCTTTGAAGAAAAGGGGATAAAGAACGACAGCGCTGAGGACCAGT
 TGAGCAAAGAGAAAAAGAAAATTTCTTTCTCCTTGTGAGGTGTGCAACATCCAGCTGAACTCTGCAGC
 CCAGGCTCAGGTGCATTCCAACGGCAAATCCCACCGCAAACGAGTGAAGCAGCTGAGTGATGGGCAGCCC
 CCACCACCGCCAGGCCAGCCCCAGCAGCAACAGCAGCACAGGCAGTACATGCCACACTACTACCTTTC
 CTGCTCTGTGCGCACACCTACCCTGATGATGCAGCCTTCACTGGATATCAAACATTTATGTCTTTTCC
 AGTGGACAGTAGTTCTGCTGTTGGGCTCTTCCAAATTTAACAATGGATCCTGTGCAAAAAGCGGTT
 ATTAACCATACATTTGGAGTATCCATCCCCAAAGAAGAAACAAGTTATTTCTGTAATGTCTGCAGC
 TTCGCTTAACTCAGATAGCCAGGCCGAGGCCACTACAAGGAAGTAAACATGCCAAGAAGGTCAAAGC
 ACTAGACGCAACGAAAAATAACCCAAAATGGTTCCTTCCAAGGACAGCGCAAAGGCTAATCCCAGCTGC
 TCCATCACTCCAATCACAGGCAACAACCTGACAAATCAGAAGATAAAGGGAAGTAAAAAGCCAGCAGTT
 CCAGTCAGCCATCAAGCTCTGAAAGTGGCTCATTTCTCCTCAAATCTGGCACAACACCCCTGCCACCTGG
 AGCAGCCACTTCTCCCTCCAAGAGCACAAATGGAGCTCCCGTACTGTTGTTGAATCAGAAGAAGAAAA
 GCCAAAAAATTACTTTATGTTCACTATGCAAAGTGGCTGTGAACTCCCTGTACAGCTAGAGGCACACA
 ACACAGGATCTAAACACAAGACCATGGTTGAAGCTCGTAATGGGGCTGGTCCAATTAATCTATCTTAG
 ACCTGGATCAAGATTAAGATGCAGAATGGCAGTAAGGGGTCAGGACTACAGAACAAGACATTTTCATTGT
 GAAATCTGTGATGTTTCATGTTAATTCAGAAATCAACTCAAACAGCACATTTCTAGCCGAAGGCATAAAG
 ATCGAGTTGCAGGAAACCACTGAAGCCAAAATACAGCCCTTACAACAACTCCAGCGGAGCCCGAGTAT
 TCTAGCAGCAAAACTTGCATTCCAGAAAGATATGATGAAGCCTTTGGCCCCAGCCTTCTGTCTCACCT
 CTCGACGCGCGCAGCCGTGTCCTCAGCGCTGTCACTCCACCCCGGCCCTCTGCCTCGCTCTTCCAGG
 CTCAGCCATTCTCCAGCTCTTCTGAGGCCTGGGCATGGGCCATCCGCGCCACTCTGCCTCCATCCT
 CTTTGCTCCGTAC

ACGCGTACGCGGCCGCTCGAGCAGAAACTCATCTCAGAAGAGGATCTGGCAGCAAATGATATCCTGGATT
 ACAAGGATGACGACGATAAGGTTTAA

Protein Sequence:

>RC210354 protein sequence
 Red=Cloning site Green=Tags(s)

MNMANFLRGFEKGIKNDRPEDQLSKEKKKILFSFCEVCNIQLNSAAQVHSNGKSHRKRKVKQLSDGQP
 PPPAQASPSNSSTGSTCHTTTLPALVRTPTLMMQPSLDIKPFMSFPVDS SAVGLFPNFNTMDPVQKAV
 INHTFGVSIPPKKQVISCNVCQLRFNSDSQAEAHYKGSKHAKKVKALDATKNPKMVPKDSAKANPSC
 SITPITGNNSDKSEDKGKLGKSSSSQPSSSESGSFLKSGTTPPPGAATSPKSTNGAPGTVVESEEEK
 AKKLLYCSLCKVAVNSLSQLEAHNTGSKHKTMEARNAGAPIKSYPRPGSRLKMQNGSKGSLQNKTFHC
 EICDVHVNSEIQLKQHISSRRHKDRVAGKPLPKYSPYNKLQRSPSILAALKLAFQKDMMKPLAPFLSSP
 LAAAAVSSALSLPPRSASLFPAPAIPPALLRPHGPIRATPASILFAPY

TRTRPLEQKLISEEDLAANDILDYKDDDDKV

Chromatograms:

https://cdn.origene.com/chromatograms/mk6367_g06.zip

Restriction Sites:

Sgfl-Mlul

Cloning Scheme:


ACCN: NM_152520

ORF Size: 1413 bp

OTI Disclaimer: The molecular sequence of this clone aligns with the gene accession number as a point of reference only. However, individual transcript sequences of the same gene can differ through naturally occurring variations (e.g. polymorphisms), each with its own valid existence. This clone is substantially in agreement with the reference, but a complete review of all prevailing variants is recommended prior to use. [More info](#)

OTI Annotation: This clone was engineered to express the complete ORF with an expression tag. Expression varies depending on the nature of the gene.

Components: The ORF clone is ion-exchange column purified and shipped in a 2D barcoded Matrix tube containing 10ug of transfection-ready, dried plasmid DNA (reconstitute with 100 ul of water).

- Reconstitution Method:**
1. Centrifuge at 5,000xg for 5min.
 2. Carefully open the tube and add 100ul of sterile water to dissolve the DNA.
 3. Close the tube and incubate for 10 minutes at room temperature.
 4. Briefly vortex the tube and then do a quick spin (less than 5000xg) to concentrate the liquid at the bottom.
 5. Store the suspended plasmid at -20°C. The DNA is stable for at least one year from date of shipping when stored at -20°C.

Note: Plasmids are not sterile. For experiments where strict sterility is required, filtration with 0.22um filter is required.

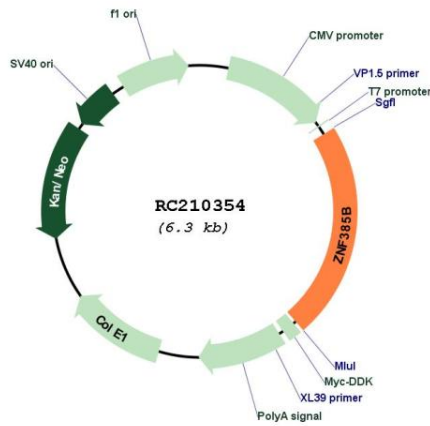
RefSeq: [NM_152520.4](#), [NP_689733.3](#)

RefSeq Size: 3320 bp

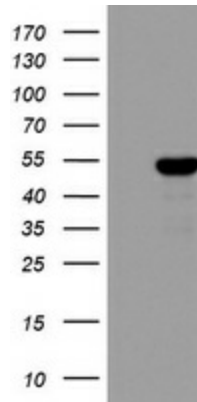
RefSeq ORF: 1461 bp

Locus ID: 151126

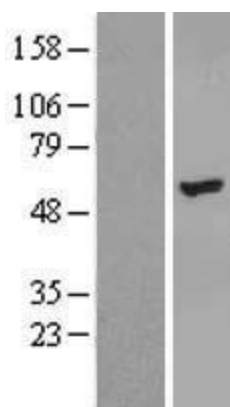
UniProt ID: [Q569K4](#)
Cytogenetics: 2q31.2-q31.3
Domains: ZnF_U1, zf-C2H2
MW: 50.4 kDa
Gene Summary: May play a role in p53/TP53-mediated apoptosis.[UniProtKB/Swiss-Prot Function]

Product images:


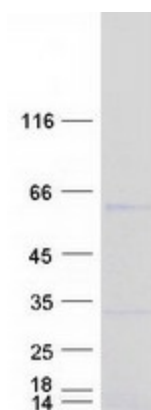
Circular map for RC210354



HEK293T cells were transfected with the pCMV6-ENTRY control (Cat# [PS100001], Left lane) or pCMV6-ENTRY ZNF385B (Cat# RC210354, Right lane) cDNA for 48 hrs and lysed. Equivalent amounts of cell lysates (5 ug per lane) were separated by SDS-PAGE and immunoblotted with anti-ZNF385B (Cat# [TA802761]). Positive lysates [LY407475] (100ug) and [LC407475] (20ug) can be purchased separately from OriGene.



Western blot validation of overexpression lysate (Cat# [LY407475]) using anti-DDK antibody (Cat# [TA50011-100]). Left: Cell lysates from untransfected HEK293T cells; Right: Cell lysates from HEK293T cells transfected with RC210354 using transfection reagent MegaTran 2.0 (Cat# [TT210002]).



Coomassie blue staining of purified ZNF385B protein (Cat# [TP310354]). The protein was produced from HEK293T cells transfected with ZNF385B cDNA clone (Cat# RC210354) using MegaTran 2.0 (Cat# [TT210002]).