

Product datasheet for **RC210351**

CCDC157 (NM_001017437) Human Tagged ORF Clone

Product data:

Product Type:	Expression Plasmids
Product Name:	CCDC157 (NM_001017437) Human Tagged ORF Clone
Tag:	Myc-DDK
Symbol:	CCDC157
Mammalian Cell Selection:	Neomycin
Vector:	pCMV6-Entry (PS100001)
E. coli Selection:	Kanamycin (25 ug/mL)



[View online »](#)

ORF Nucleotide Sequence:

>RC210351 ORF sequence
 Red=Cloning site Blue=ORF Green=Tags(s)

TTTTGTAATACGACTCACTATAGGGCGGCCGGAATTCGTCGACTGGATCCGGTACCGAGGAGATCTGCC
 GCC**CGCATCGCC**

ATGGTGGCCCTGTGAGCACTATGACCATGTTCCGGGTGACCCCGAGTTCACGCAGCTGTCCCATGCCG
 TGCTGCTGGAGCTGGTCATCGACAGGCTCCTGCTGCTGCTCAAAGCTGTATGAGCTACTTGGAGAACCT
 TGGCTCAGAGCAGATGATGCCCCCTGCACAGGCTGCGGGGCCCTGCATGTCCGTGGGGCTCACGGTGCGG
 CGCTTCTGGGACAGCCTGCTGAGGCTGGGCAGCTCCACCAGCAGCCACTCCCCAGAAAGGGGCAAACC
 AAAGGGAGACTCCACCTCCAAGCCACCACCAAGGGCGAGCCAGGAGCCCTGAATATCTGACTAC
 CAAGTTAATCAAGCCCTCCTCCCAGTGTAGGCTTGCCCAGACCTGCCAAGAGCCAGAGAGCATCCCT
 GTCAGAGCCTCCCTGCAGTTCACAGCCACGACCTTCAAGAACCAGGAGTGTCCACTCCAGACCATTG
 AGACGGCCCTGGTGCCCTGTGACGCATGCGCCAGCGTCCAGGGAAGCCTGCAGAAGTGGCAAGGTGGT
 CATCAGCCTGTGTAGAGCCAGAACCTGCCCTCGTCCTTAGGCCAGTTCAGCAACTGGTGCAGGACAGC
 ATGGGGCTCAGGCCACTGCCGGCTGCCACCGTGGGCCGCTGGGCAGCAGAGCAGAGGAAAGACCTGACGC
 GCCTCAGTAAGCATGTGGAGGCCCTCAGGGCCAGCTGGAGGAGGCTGAAGGGCAGAAGGATGGCCTGAG
 GAAGCAGGCGGGCAAGCTGGAGCAGGCGCTGAAACAGGAGCAGGGGGCACGGCGGCACAGGCGGAGGAG
 GATGAGCAGTGCCTGTCTGAGTGGGAGCAGGACAAACAGCAGCTGCTCACAGAAACAAGTACCTAAAGA
 CAAAGATGGCCACCCTGGAGAGAGAACTGAAACAGCAGCGGGAGTCCACACAGGCTGTGGAGGCAAAGGC
 CCAGCAGCTGCAGGAGGAAGGTGAGCGCAGGGCGGCAGCGGAGAGGCAGGTGCAGCAGCTGGAGGAGCAG
 GTGCAGCAGTGGAGGCGCAGGTGCAGCTGTTGGTGGTGGCTGGAGGGCGCTGGCCAGCAGGTCTGCT
 GGGCCAGCAGGAGCTGGATAAGGAGAAGGCCGTGTCGACAGCATGGTCCGCCACCAGGAGTCTCTGCA
 GGCCAAGCAGCAGGCCCTGCTAAAGCAGCTGGACAGCCTGGACCAGGAACGTGAGGAGCTCGGGGGCAGC
 CTGGACGAGGCTGAGGCCACGGGGCCCGCTGGAGGAGCAGCTGCAGAGCGAGCGGGAGCAGGGCAAT
 GCCAGCTCAGGGCCAGCAGGAGCTGCTGCAGAGCCTGCAGAGGAGAAGCAAGGCTGGAGCAGGCGAC
 TACGGACCTGCGGCTAACCATCCTGGAGCTAGAACGGGAGCTGGAGGAGCTGAAGGAGCGGGAGCGGCTG
 CTGGTGGCCTTCCCAGACCTGCACAGGCCACCGAGACCAGATCCATGGAGGCAGATCCAGCAGCGTGG
 AATCCCAGATAACATGTCCACAGACTTGGCAACGTACAGATCACATGGAGAGCAAGTGCAGGCCAA
 CGACATCCGCATCCGGTCTACAGGAGGAGAACGGGCGGCTCCAATCAATGCTGTCCAAAATCCGGGAA
 GTGGCCAGCAGGCTGGCCTCAAGCTGATCCCGCAGGACCGGCTCTGGTCCCCTCCAGCAAGGGAACCC
 AGGGAGCAACACCACAGTCCAGGCCAAGAGCACATCCCCAGGGCCTCTGGGCAGACAGCACCTTCTAG
 CAGCAGGACGGGTAGGACCCCTGCTGGGCCAGCCCTGCACATCCCCACCTCGGCAGCCCTGCACATCCCCA
 CCTCGGCAGCCCTGCACATCCCCACCTCGGCAGCCCTGCACATCCCCATCTCGGCAGCCCTGCAGCCAGC
 CCAGCAAGTCCTTGTGGAGGTTGTGACCCACTTGACACCTGCACCCAGAACCCTCAAGGTCTTGGT
 CAGGCTGAGAAAGAGACTGTCACCTGGCCGGGGACAGGCCAGCTCTGCACACCAGCCCCAGGAGCGGCC
 ATG

ACGCGTACGCGGCCGCTCGAGCAGAACTCATCTCAGAAGAGGATCTGGCAGCAAATGATATCCTGGATT
 ACAAGGATGACGACGATAAGGTTTAA

Protein Sequence: >RC210351 protein sequence
 Red=Cloning site Green=Tags(s)

MVALLEHYDHPGDPEFTQLSHAVLLELVIDRLLLLQSCMSYLENLGSEQMPPAQAAGPCMSVGLTVR
 RFWDSLRLGLHQQPLPQKGANQRETPTSKPTTKGEPARSPEYLTTKLIKPSPPVLGLPQTCQEPESIP
 VRASLQFPATTFKNTRSVHSQTIETALVPCDACASVQGSQKQVGVVIVSLCQSQNLPSLQGFQQLVQDS
 MGLRPLPAATVGRWAAEQRKDLTRL SKHVEALRAQLEEAEGQKDGLRKQAGKLEQALKQEQGARRRQAE
 DEQCLSEWEHDKQQLLTETSDLTKMATLERELKQRESTQAVEAKAQQLEEGERRAAERQVQLEEQ
 VQQLAQVQLLVGRLEGAGQVCWASTELDKKARVDSMVRHQESLQAKQRALLKQLDSLQEREELRGS
 LDEAEAQRARVEEQLQSEREQGCQLRAQQELLQSLQREKQGLEQATTDLRLTILELERELEELKERERL
 LVAFPDLHRPTETQIHGGRSSSVESQITCPTDSGNVTDHMERQVQANDIRIRVLQEENGLRQSMISKIRE
 VAQQGGLKLIPQDRLWSPSSKGTQGATPPVQAKSTSPGPLGRQHLPSSRTGRTLLGQPCTSPRPQCTSP
 PRQPCTSPRPQCTSPSRQPCSQPSKSLLEGVTHLDTCTQNPVILVRLRKRLSPGRGQASSAHQPQER
 M

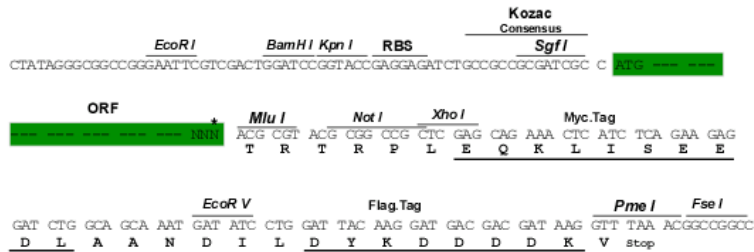
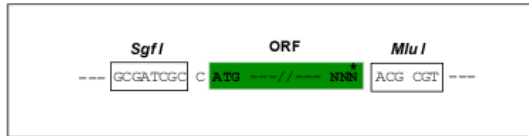
TRTRPLEQKLISEEDLAANDILDYKDDDDKV

Chromatograms: https://cdn.origene.com/chromatograms/mk6367_e09.zip

Restriction Sites: Sgfl-MluI

Cloning Scheme:

Cloning sites used for ORF Shuttling:



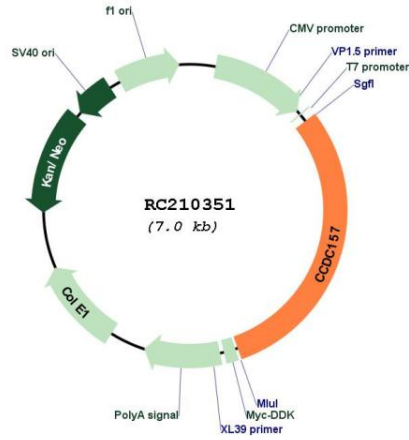
* The last codon before the Stop codon of the ORF

ACCN: NM_001017437

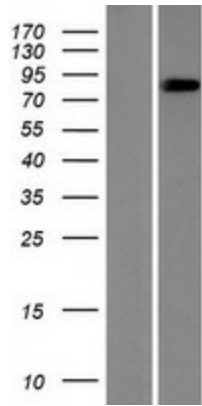
ORF Size: 2103 bp

OTI Disclaimer:	<p>Due to the inherent nature of this plasmid, standard methods to replicate additional amounts of DNA in E. coli are highly likely to result in mutations and/or rearrangements. Therefore, OriGene does not guarantee the capability to replicate this plasmid DNA. Additional amounts of DNA can be purchased from OriGene with batch-specific, full-sequence verification at a reduced cost. Please contact our customer care team at custsupport@origene.com or by calling 301.340.3188 option 3 for pricing and delivery.</p> <p>The molecular sequence of this clone aligns with the gene accession number as a point of reference only. However, individual transcript sequences of the same gene can differ through naturally occurring variations (e.g. polymorphisms), each with its own valid existence. This clone is substantially in agreement with the reference, but a complete review of all prevailing variants is recommended prior to use. More info</p>
OTI Annotation:	This clone was engineered to express the complete ORF with an expression tag. Expression varies depending on the nature of the gene.
Components:	The ORF clone is ion-exchange column purified and shipped in a 2D barcoded Matrix tube containing 10ug of transfection-ready, dried plasmid DNA (reconstitute with 100 ul of water).
Reconstitution Method:	<ol style="list-style-type: none"> 1. Centrifuge at 5,000xg for 5min. 2. Carefully open the tube and add 100ul of sterile water to dissolve the DNA. 3. Close the tube and incubate for 10 minutes at room temperature. 4. Briefly vortex the tube and then do a quick spin (less than 5000xg) to concentrate the liquid at the bottom. 5. Store the suspended plasmid at -20°C. The DNA is stable for at least one year from date of shipping when stored at -20°C.
Note:	Plasmids are not sterile. For experiments where strict sterility is required, filtration with 0.22um filter is required.
RefSeq:	NM_001017437.1 , NP_001017437.1
RefSeq Size:	3023 bp
RefSeq ORF:	2259 bp
Locus ID:	550631
UniProt ID:	Q569K6
Cytogenetics:	22q12.2
MW:	78.3 kDa

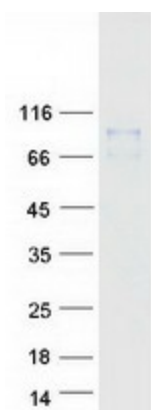
Product images:



Circular map for RC210351



Western blot validation of overexpression lysate (Cat# [LY422734]) using anti-DDK antibody (Cat# [TA50011-100]). Left: Cell lysates from untransfected HEK293T cells; Right: Cell lysates from HEK293T cells transfected with RC210351 using transfection reagent MegaTran 2.0 (Cat# [TT210002]).



Coomassie blue staining of purified CCDC157 protein (Cat# [TP310351]). The protein was produced from HEK293T cells transfected with CCDC157 cDNA clone (Cat# RC210351) using MegaTran 2.0 (Cat# [TT210002]).