

Product datasheet for **RC210350**

SPATA7 (NM_001040428) Human Tagged ORF Clone

Product data:

Product Type:	Expression Plasmids
Product Name:	SPATA7 (NM_001040428) Human Tagged ORF Clone
Tag:	Myc-DDK
Symbol:	SPATA7
Synonyms:	HEL-S-296; HSD-3.1; HSD3; LCA3
Mammalian Cell Selection:	Neomycin
Vector:	pCMV6-Entry (PS100001)
E. coli Selection:	Kanamycin (25 ug/mL)



[View online »](#)

ORF Nucleotide Sequence:

>RC210350 ORF sequence
 Red=Cloning site Blue=ORF Green=Tags(s)

TTTTGTAATACGACTCACTATAGGGCGGCCGGAATTCGTCGACTGGATCCGGTACCGAGGAGATCTGCC
 GCC**CGGATCGCC**

ATGGATGGCAGCCGGAGAGTCCAGAGCAACCTCTGTCTTCCAGATATGGTCCACCGTGCCTATTTAAAG
 GACACTTGAGCACAAAAGTAATGCTGCAGTAGACTGCTCGGTTCCAGTAAGCGTGAGTACCAGCATAAA
 GTATGCAGACCAACAACGAAGAGAGAACTCAAAAAGGAATTAGCACAATGTAAAAAGAGTTCAAATTA
 ACTAAACTGCAATGCGAGCCAATTATAAAAAAATTCCAAGTCACTTTTTAATACCTTACAAAAGCCCT
 CAGGCGAACCGCAAATTGAGGATGACATGTTAAAAAGAAGAAATGAATGGATTTTCATCCTTTGCAAGGC
 ACTAGTACCCTTTCAGAGAGACTACACCTAAGTCTACATAAATCCAGTAAAGTCATCACAAATGGTCT
 GAGAAGAACTCCAGTTCCTCCCGTCCAGTGTGGATTATGCAGCCTCCGGGCCCCGAAACTGAGCTCTG
 GAGCCCTGTATGGCAGAAGGCCAGAAGCACATCCCAAATCCACCGTTTCAGTTAGTCATTTGCGAA
 AGCACCCAGTGGGGATCTTTTGGATAAACATTCTGAACCTTTTTCTAACAAACAATTGCCATTCACTCCT
 CGCACTTTAAAAACAGAAGCAAAATCTTTCCTGTACAGTATCGTATTATACACCTGCCAAAAGAAAA
 AGGATTTTACAGATCAACGGATAGAAGCTGAAACCCAGACTGAATTAAGCTTTAAATCTGAGTTGGGGAC
 AGCTGAGACTAAAAACATGACAGATTGAGAAATGAACATAAAGCAGGCATCTAATTTGTGTGACATATGAT
 GCCAAAGAAAAATAGCTCCTTTACCTTTAGAAGGGCATGACTCAACATGGGATGAGATTAAGGATGATG
 CTCTTCAGCATTCTCACCAGGGCAATGTGTGATTCCTGAAGCCCCCTTCAACTCGTAAAAATCTA
 CTCTGATGAAGAAGAAGTGTGTATCTGAGTTTCATTGAAGATGTAAACAGATGAAATTTTGAACCTGGT
 TTATTTTCAAACAGGTTTTTGAACGACTGTTTCGAGCGACATATAAAACAAAATAAACATTTGGAGGAGG
 AAAAAATGCGCCACCTGCTGCATGCTGAAAGTAGACTTAGGCTGCACATCGGAGGAAAACTCGGTAAA
 GCAAATGATGTTGATATGTTGAATGTATTTGATTTTGAAGGCTGGGAATTCAGAACCAATGAATTA
 AAAAAAGAAAGTGAAGTAAACAATTCAGCAGGAACGTCAACAATACAAAAGGCTTTGGATATGTTATTGT
 CGGCACCAAAGGATGAGAACGAGATATTCCTTACCACCTGAATTTTTTCATGCCTATTTATAAATCAA
 GCATTCAGAAGGGTTATAATTCAACAGGTGAATGATGAAACAAATCTTGAACCTCAACTTTGGATGAA
 AATCATCAAGTATTTACAGACAGTTAACAGATCGGAAACTTCTGTGAATGTCATTGAAGGTGATAGT
 ACCCTGAAAGGTTGAGATTTCAAATGGATTATGTGGTCTAACACATCACCTCCCAATCTGTTGAGTT
 CTCCAGTGTCAAAGGCGACAATAATCATGACATGGAGTTATCAACTCTTAAAATCATGAAATGAGCATT
 GAGGACTGCCCTTTGGATGTT

ACGCGTACGCGGCCGCTCGAGCAGAAACTCATCTCAGAAGAGGATCTGGCAGCAAATGATATCCTGGATT
 ACAAGGATGACGACGATAAGGTTTAA

Protein Sequence:

>RC210350 protein sequence
 Red=Cloning site Green=Tags(s)

MDGSRVRATSVLPYRYPPLFKGHLSTKSNAAVDCSVPVSVSTSIKYADQQRREKLKKELAQCEKEFKL
 TKTAMRANYKNSKSLFNTLQKPSGEPQIEDMLKEEMNGFSSFARSLVPSSERLHLHLKSSKVIITNGP
 EKNSSSPSSVDYASGPRKLSGALYGRPRSTFPNSHRFQLVLSKAPSGDLLDKHSELSNKLQFPPTP
 RTLKTEAKSFLSQYRYTPAKRKKDFDQRIEAEQTQELSFKSELGTAETKNMTDSEMNIKQASNCVTD
 AKEKIAPLPLEGHDSTWDEIKDDALQHSSPRAMCQYSLKPPSTRKIYSDEEELLYLSFIEDVTDEILKLG
 LFSNRFLERLFRHIKQNKHLEEEKMRHLLHVLKVDLGCTSEENSVKQNDVDMLNVDFEKGAGNSEPNEL
 KNESEVTIQERQYQKALDMLLSAPKDENEIFPSPTFFMPIYKSKHSEGVIIQQVNDENTLETSTLDE
 NHPSISDSLTDRETSVNVIEGSDPEKVEISNGLCGLNTSPSQSVQFSSVKGDNNHDMELSTLKIMEMSI
 EDCLDV

TRTRPLEQKLISEEDLAANDILDYKDDDDKV

Chromatograms:

https://cdn.origene.com/chromatograms/mk6367_b04.zip

Restriction Sites:

Sgfl-Mlul

Cloning Scheme:


ACCN: NM_001040428

ORF Size: 1701 bp

OTI Disclaimer: Due to the inherent nature of this plasmid, standard methods to replicate additional amounts of DNA in E. coli are highly likely to result in mutations and/or rearrangements. Therefore, OriGene does not guarantee the capability to replicate this plasmid DNA. Additional amounts of DNA can be purchased from OriGene with batch-specific, full-sequence verification at a reduced cost. Please contact our customer care team at custsupport@origene.com or by calling 301.340.3188 option 3 for pricing and delivery.

The molecular sequence of this clone aligns with the gene accession number as a point of reference only. However, individual transcript sequences of the same gene can differ through naturally occurring variations (e.g. polymorphisms), each with its own valid existence. This clone is substantially in agreement with the reference, but a complete review of all prevailing variants is recommended prior to use. [More info](#)

OTI Annotation: This clone was engineered to express the complete ORF with an expression tag. Expression varies depending on the nature of the gene.

Components: The ORF clone is ion-exchange column purified and shipped in a 2D barcoded Matrix tube containing 10ug of transfection-ready, dried plasmid DNA (reconstitute with 100 ul of water).

- Reconstitution Method:**
1. Centrifuge at 5,000xg for 5min.
 2. Carefully open the tube and add 100ul of sterile water to dissolve the DNA.
 3. Close the tube and incubate for 10 minutes at room temperature.
 4. Briefly vortex the tube and then do a quick spin (less than 5000xg) to concentrate the liquid at the bottom.
 5. Store the suspended plasmid at -20°C. The DNA is stable for at least one year from date of shipping when stored at -20°C.

Note: Plasmids are not sterile. For experiments where strict sterility is required, filtration with 0.22um filter is required.

RefSeq: [NM_001040428.3](#), [NP_001035518.1](#)

RefSeq Size: 1935 bp

RefSeq ORF: 1704 bp

Locus ID: 55812

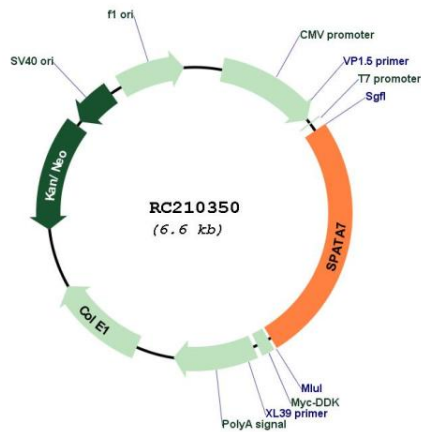
UniProt ID: [Q9P0W8](#)

Cytogenetics: 14q31.3

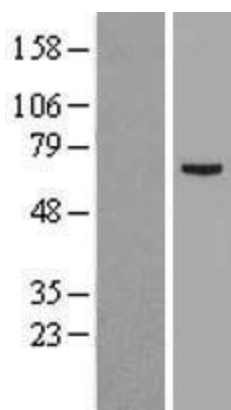
MW: 64.2 kDa

Gene Summary: This gene, originally isolated from testis, is also expressed in retina. Mutations in this gene are associated with Leber congenital amaurosis and juvenile retinitis pigmentosa. Alternatively spliced transcript variants encoding different isoforms have been found for this gene. [provided by RefSeq, May 2010]

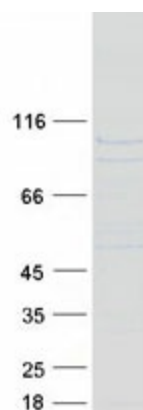
Product images:



Circular map for RC210350



Western blot validation of overexpression lysate (Cat# [LY421749]) using anti-DDK antibody (Cat# [TA50011-100]). Left: Cell lysates from untransfected HEK293T cells; Right: Cell lysates from HEK293T cells transfected with RC210350 using transfection reagent MegaTran 2.0 (Cat# [TT210002]).



Coomassie blue staining of purified SPATA7 protein (Cat# [TP310350]). The protein was produced from HEK293T cells transfected with SPATA7 cDNA clone (Cat# RC210350) using MegaTran 2.0 (Cat# [TT210002]).