

Product datasheet for RC210346L1

TBC1D24 (NM_020705) Human Tagged Lenti ORF Clone

Product data:

Product Type:	Expression Plasmids
Product Name:	TBC1D24 (NM_020705) Human Tagged Lenti ORF Clone
Tag:	Myc-DDK
Symbol:	TBC1D24
Synonyms:	DEE16; DFNA65; DFNB86; DOORS; EIEE16; EPRPDC; FIME; TLDC6
Mammalian Cell Selection:	None
Vector:	pLenti-C-Myc-DDK (PS100064)
E. coli Selection:	Chloramphenicol (34 ug/mL)
ORF Nucleotide Sequence:	The ORF insert of this clone is exactly the same as(RC210346).
Restriction Sites:	SgfI-MluI
Cloning Scheme:	

Cloning sites used for ORF Shuttling:



* The last codon before the Stop codon of the ORF.

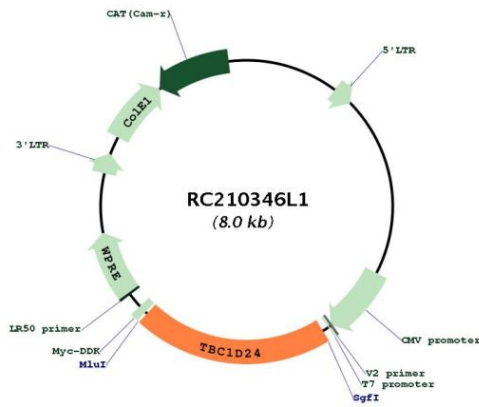
ACCN:	NM_020705
ORF Size:	1659 bp



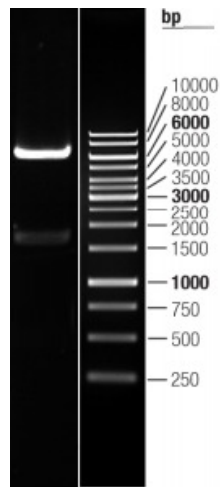
[View online »](#)

OTI Disclaimer:	The molecular sequence of this clone aligns with the gene accession number as a point of reference only. However, individual transcript sequences of the same gene can differ through naturally occurring variations (e.g. polymorphisms), each with its own valid existence. This clone is substantially in agreement with the reference, but a complete review of all prevailing variants is recommended prior to use. More info
OTI Annotation:	This clone was engineered to express the complete ORF with an expression tag. Expression varies depending on the nature of the gene.
Components:	The ORF clone is ion-exchange column purified and shipped in a 2D barcoded Matrix tube containing 10ug of transfection-ready, dried plasmid DNA (reconstitute with 100 ul of water).
Reconstitution Method:	<ol style="list-style-type: none">1. Centrifuge at 5,000xg for 5min.2. Carefully open the tube and add 100ul of sterile water to dissolve the DNA.3. Close the tube and incubate for 10 minutes at room temperature.4. Briefly vortex the tube and then do a quick spin (less than 5000xg) to concentrate the liquid at the bottom.5. Store the suspended plasmid at -20°C. The DNA is stable for at least one year from date of shipping when stored at -20°C.
RefSeq:	NM_020705.1
RefSeq Size:	6589 bp
RefSeq ORF:	1662 bp
Locus ID:	57465
UniProt ID:	Q9ULP9
Cytogenetics:	16p13.3
MW:	62.3 kDa
Gene Summary:	This gene encodes a protein with a conserved domain, referred to as the TBC domain, characteristic of proteins which interact with GTPases. TBC domain proteins may serve as GTPase-activating proteins for a particular group of GTPases, the Rab (Ras-related proteins in brain) small GTPases which are involved in the regulation of membrane trafficking. Mutations in this gene are associated with familial infantile myoclonic epilepsy. Alternative splicing results in multiple transcript variants. [provided by RefSeq, Feb 2011]

Product images:



Circular map for RC210346L1



Double digestion of RC210346L1 using SgfI and MluI