

Product datasheet for RC210345

SLC35D3 (NM_001008783) Human Tagged ORF Clone

Product data:

Product Type:	Expression Plasmids
Product Name:	SLC35D3 (NM_001008783) Human Tagged ORF Clone
Tag:	Myc-DDK
Symbol:	SLC35D3
Synonyms:	FRCL1
Mammalian Cell Selection:	Neomycin
Vector:	pCMV6-Entry (PS100001)
E. coli Selection:	Kanamycin (25 ug/mL)
ORF Nucleotide Sequence:	>RC210345 representing NM_001008783 Red=Cloning site Blue=ORF Green=Tags(s)

TTTTGTAATACGACTCACTATAGGGCGGCCGGAATTCGTCGACTGGATCCGGTACCGAGGAGATCTGCC
GCC**CGATCGCC**

ATGCGGCAGCTGTGCCGGGGCCGCTGCTGGGCATCTCGGTGGCCATCGCGCACGGGTCTTCTCGGGCT
CCCTCAACATCTTGCTCAAGTTCCTCATCAGCCGCTACCAGTTCTCTTCTGACCCTGGTGCAGTGCCT
GACCAGCTCCACCGCGCGCTGAGCCTGGAGCTGCTGCGGCGCCTCGGGCTCATCGCCGTGCCCCCTTC
GGTCTGAGCCTGGCGGCTCCTTCGCGGGGTGCGGTGCTCTCCACGCTGCAGTCCAGCCTCACGCTCT
GGTCCCTGCGCGCCTCAGCCTGCCATGTACGTGGTCTTCAAGCGCTGCCTGCCCTGGTACCATGCT
CATCGGGCTCCTGGTTCTCAAGAACGGCGCCCTCGCCAGGGGTGCTGGCGGCGGTGCTCATACCACC
TGCGGCGCCGCCCTGGCAGGAGCCGCGACCTGACGGGCGACCCATCGGGTACGTACAGGGAGTGTGG
CGGTGCTGGTGCACGCTGCCTACCTGGTGTCTATCCAGAAGGCCAGCGCAGACACCGAGCACGGGCCGT
CACCGCGCAGTACGTATCGCCGTCTCTGCCACCCGCTGCTGGTTCATCTGCTCCTTCGCCAGCACCGAC
TCCATCCACGCTGGACCTTCCCGGGCTGGAAGGACCCGGCCATGGTCTGCATCTTCGTGGCCTGCATCC
TGATCGGCTGCGCCATGAACTTCACCACGCTGCACTGCACCTACATCAATTGGCCGTGACCACAGCTT
CGTGGGTGGTGAAGAGCATCGCCACCATCACGGTGGGATGGTGGCCCTCAGCGACGTGGAGCCACCC
TCTCTGTTCAATGCGGGCTGGTGGTGAACACCCTGGGCTCTATCATTTACTGTGTGGCCAAAGTTCATGG
AGACCAGAAAGCAAAGCAACTACGAGGACCTGGAGGCCAGCCTCGGGGAGAGGAGGCGCAGCTAAGTGG
AGACCAGCTGCCGTTCTGATGGAGGAGCTGCCGGGGAGGAGGAAATGGCCGGTCAAGAGGTGGGGAG
GCAGCAGGTGGCCCCGCTCAGGAGAGCAGGCAAGAGGTCAGGGGCGAGCCCCGAGGAGTCCCGCTGGTGG
CTGGGAGCTCTGAAGAAGGGAGCAGGAGGTCGTTAAAAGATGCTTACCTCGAGGTATGGAGGTTGGTTAG
GGGAACCAAGTATATGAAGAAGGATTATTTGATAGAAAACGAGGAGTTACCCAGTCTCT

ACGGTACGCGGCCGCTCGAGCAGAAACTCATCTCAGAAGAGGATCTGGCAGCAAATGATATCCTGGATT
ACAAGGATGACGACGATAAGGTTTAA



Protein Sequence: >RC210345 representing NM_001008783
Red=Cloning site Green=Tags(s)

MRQLCRGRVLGISVAIAHGVSGLNILLKFLISRYQFSFLTIVQCLTSSTAALSLELLRRLGLIAPPP
 GLSLARSFAGVAVLSTLQSSLTLWLSRGLSLPMYVVKRCLPLVTMLIGVLVLKNGAPSPGVLAAVLITT
 CGAALAGAGDLTGDPYVVTGVLAVLVHAAYLVLIQKASADTEHGPLTAQYVVIASATPLLVICSFASD
 SIHAWTFPGWKDPAMVCFVACILIGCAMNFTTLHCTYINSAVTTSFVGVVKSIAITITVGMVAFSDVEPT
 SLFIAGVVVNTLGSIIYCVAKFMETRKQSNYEDLEAQPRGEEAQLSGDQLPFVMEELPGEAGNRSEGGE
 AAGGPAQESRQEVKRGSPRGVPLVAGSSEEGSRRSLKDAYLEVWRLVRGTRYMKDYLIENEELPSP

TRTRPLEQKLISEEDLAANDILDYKDDDDKV

Chromatograms: https://cdn.origene.com/chromatograms/mg4722_a09.zip

Restriction Sites: SgfI-MluI

Cloning Scheme:



ACCN: NM_001008783

ORF Size: 1248 bp

OTI Disclaimer: The molecular sequence of this clone aligns with the gene accession number as a point of reference only. However, individual transcript sequences of the same gene can differ through naturally occurring variations (e.g. polymorphisms), each with its own valid existence. This clone is substantially in agreement with the reference, but a complete review of all prevailing variants is recommended prior to use. [More info](#)

OTI Annotation: This clone was engineered to express the complete ORF with an expression tag. Expression varies depending on the nature of the gene.

Components: The ORF clone is ion-exchange column purified and shipped in a 2D barcoded Matrix tube containing 10ug of transfection-ready, dried plasmid DNA (reconstitute with 100 ul of water).

Reconstitution Method:

1. Centrifuge at 5,000xg for 5min.
2. Carefully open the tube and add 100ul of sterile water to dissolve the DNA.
3. Close the tube and incubate for 10 minutes at room temperature.
4. Briefly vortex the tube and then do a quick spin (less than 5000xg) to concentrate the liquid at the bottom.
5. Store the suspended plasmid at -20°C. The DNA is stable for at least one year from date of shipping when stored at -20°C.

Note: Plasmids are not sterile. For experiments where strict sterility is required, filtration with 0.22um filter is required.

RefSeq: [NM_001008783.1](#), [NP_001008783.1](#)

RefSeq Size: 2371 bp

RefSeq ORF: 1251 bp

Locus ID: 340146

UniProt ID: [Q5M8T2](#)

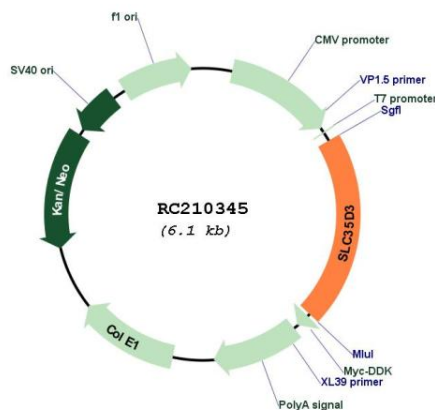
Cytogenetics: 6q23.3

Protein Families: Transmembrane

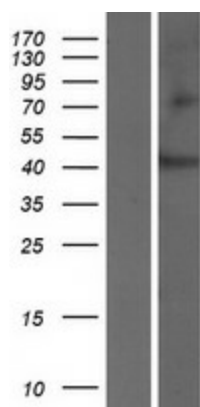
MW: 44 kDa

Gene Summary: May play a role in hemostasis as a regulator of the biosynthesis of platelet-dense granules. [UniProtKB/Swiss-Prot Function]

Product images:



Circular map for RC210345



Western blot validation of overexpression lysate (Cat# [LY423378]) using anti-DDK antibody (Cat# [TA50011-100]). Left: Cell lysates from untransfected HEK293T cells; Right: Cell lysates from HEK293T cells transfected with RC210345 using transfection reagent MegaTran 2.0 (Cat# [TT210002]).