

Product datasheet for RC210336

CCN2 (NM_001901) Human Tagged ORF Clone

Product data:

Product Type:	Expression Plasmids
Product Name:	CCN2 (NM_001901) Human Tagged ORF Clone
Tag:	Myc-DDK
Symbol:	CCN2
Synonyms:	CTGF; HCS24; IGFBP8; NOV2
Vector:	pCMV6-Entry (PS100001)
E. coli Selection:	Kanamycin (25 ug/mL)
Cell Selection:	Neomycin
ORF Nucleotide Sequence:	>RC210336 ORF sequence Red=Cloning site Blue=ORF Green=Tags(s)

TTTTGTAATACGACTCACTATAGGGCGGCCGGAATTCGTCGACTGGATCCGGTACCGAGGAGATCTGCC
GCCGCGATCGCC

ATGACCGCGCCAGTATGGGCCCGTCCGCGTCGCTTCGTGGTCTCCTCGCCCTGCAGCCGGCCGG
CCGTCGGCCAGAAGTGCAGCGGGCCGTGCCGGTCCCGGACGAGCCGGCCGCGCTGCCGGCCGGCGGT
GAGCCTCGTGCTGGACGGCTGCGGCTGCTGCCGCTCGGCCAAGCAGCTGGGCGAGCTGTGCACCGAG
CGCGACCCCTGCGACCCGACAAGGGCCTTCTGTGACTTCGGTCCCGGCCAACCGCAAGATCGGCG
TGTGCACCGCCAAAGATGGTGCTCCCTGCATCTTCGGTGGTACGGTGTACCGCAGCGGAGAGTCTTCCA
GAGCAGCTGCAAGTACCAGTGCACGTGCCTGGACGGGGCGGTGGGCTGCATGCCCTGTGCAGCATGGAC
GTTTCGTGTCGCCAGCCCTGACTGCCCTTCCCGAGGAGGGTCAAGCTGCCCGGAAATGCTGCGAGGAGT
GGGTGTGTGACGAGCCCAAGGACCAACCGTGGTTGGCCTGCCCTCGCGGCTTACCGACTGGAAGACAC
GTTTGGCCAGACCAACTATGATTAGAGCCAAGTGCCTGGTCCAGACCACAGAGTGGAGCGCCTGTTCC
AAGACCTGTGGGATGGGCATCTCCACCCGGTTACCAATGACAACGCCTCCTGCAGGCTAGAGAAGCAGA
GCCGCTGTGCATGGTCAGGCCTTGCGAAGCTGACCTGGAAGAGAACATTAAGAAGGGCAAAAAGTGCAT
CGTACTCCAAAATCTCCAAGCCTATCAAGTTTGAGCTTTCTGGTGCACCGCATGAAGACATACCGA
GCTAAATTCTGTGGAGTATGTACCGACGCGGATGCTGCACCCCCACAGAACCACCACCCTGCCGGTGG
AGTTCAAGTGCCTGACGGCGAGGTGATGAAGAAGACATGATGTTTCATCAAGACCTGTGCCTGCCATTA
CAACTGTCCCGGAGACAATGACATCTTTGAATCGCTGACTACAGGAAGATGTACGGAGACATGGCA

ACGCGTACGCGGCCGCTCGAGCAGAAACTCATCTCAGAAGAGGATCTGGCAGCAATGATATCCTGGATT
ACAAGGATGACGACGATAAGGTTTAA



[View online »](#)

Protein Sequence: >RC210336 protein sequence
Red=Cloning site Green=Tags(s)

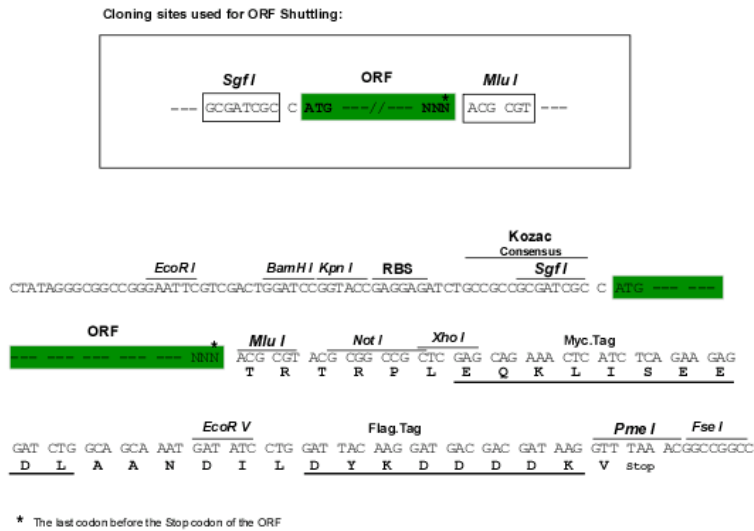
MTAASMGPVRFVLLALCSRPAVGQNCSPGCRCPDEPAPRCPAGVSLVLDGCGCCRVCAKQLGELCTE
 RDPCDPHKGLFCDFGSPANRKIGVCTAKDGAPCIFGGTVYRSGESFQSSCKYQCTCLDGAVGCMPLCSMD
 VRLPSPDCPFPRRVKLPKGCCEEWVCDEPKDQTVVGPALAAAYRLEDTFGPDPTMIRANCLVQTTEWSACS
 KTCGMGISTRVTNDNASCRLEKQSRLCMVRPCEADLEENIKKGGKICIRTPKISKPIKFELSGCTSMKTYR
 AKFCGVCTDGRCTPHRTTTLPEVFKCPDGEVMKKMMFIKTCACHYNCPGDNDIFESLYRKMVGDMA

TRTRPLEQKLISEEDLAANDILDYKDDDDKV

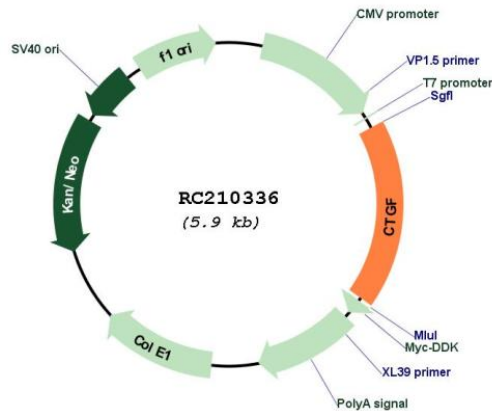
Chromatograms: https://cdn.origene.com/chromatograms/mk6269_d06.zip

Restriction Sites: SgfI-MluI

Cloning Scheme:



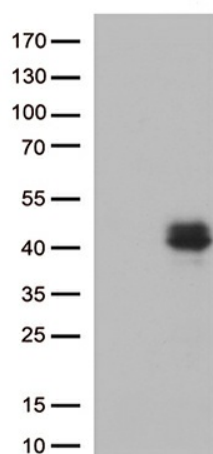
Plasmid Map:



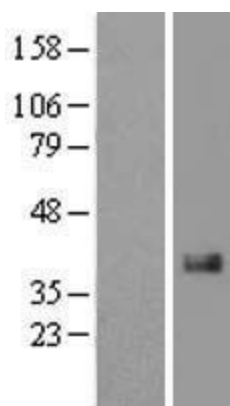
ACCN: NM_001901

ORF Size:	1047 bp
OTI Disclaimer:	<p>Due to the inherent nature of this plasmid, standard methods to replicate additional amounts of DNA in E. coli are highly likely to result in mutations and/or rearrangements. Therefore, OriGene does not guarantee the capability to replicate this plasmid DNA. Additional amounts of DNA can be purchased from OriGene with batch-specific, full-sequence verification at a reduced cost. Please contact our customer care team at custsupport@origene.com or by calling 301.340.3188 option 3 for pricing and delivery.</p> <p>The molecular sequence of this clone aligns with the gene accession number as a point of reference only. However, individual transcript sequences of the same gene can differ through naturally occurring variations (e.g. polymorphisms), each with its own valid existence. This clone is substantially in agreement with the reference, but a complete review of all prevailing variants is recommended prior to use. More info</p>
OTI Annotation:	This clone was engineered to express the complete ORF with an expression tag. Expression varies depending on the nature of the gene.
Components:	The ORF clone is ion-exchange column purified and shipped in a 2D barcoded Matrix tube containing 10ug of transfection-ready, dried plasmid DNA (reconstitute with 100 ul of water).
Reconstitution Method:	<ol style="list-style-type: none">1. Centrifuge at 5,000xg for 5min.2. Carefully open the tube and add 100ul of sterile water to dissolve the DNA.3. Close the tube and incubate for 10 minutes at room temperature.4. Briefly vortex the tube and then do a quick spin (less than 5000xg) to concentrate the liquid at the bottom.5. Store the suspended plasmid at -20°C. The DNA is stable for at least one year from date of shipping when stored at -20°C.
RefSeq:	NM_001901.3
RefSeq Size:	2358 bp
RefSeq ORF:	1050 bp
Locus ID:	1490
UniProt ID:	P29279
Cytogenetics:	6q23.2
Domains:	IB, tsp_1, VWC, CT, Cys_knot
Protein Families:	Druggable Genome, Secreted Protein
MW:	38.1 kDa
Gene Summary:	<p>The protein encoded by this gene is a mitogen that is secreted by vascular endothelial cells. The encoded protein plays a role in chondrocyte proliferation and differentiation, cell adhesion in many cell types, and is related to platelet-derived growth factor. Certain polymorphisms in this gene have been linked with a higher incidence of systemic sclerosis. [provided by RefSeq, Nov 2009]</p>

Product images:



HEK293T cells were transfected with the pCMV6-ENTRY control (Cat# [PS100001], Left lane) or pCMV6-ENTRY CTGF (Cat# RC210336, Right lane) cDNA for 48 hrs and lysed. Equivalent amounts of cell lysates (5 ug per lane) were separated by SDS-PAGE and immunoblotted with anti-CTGF (Cat# [TA806803])(1:500).



Western blot validation of overexpression lysate (Cat# [LY419668]) using anti-DDK antibody (Cat# [TA50011-100]). Left: Cell lysates from untransfected HEK293T cells; Right: Cell lysates from HEK293T cells transfected with RC210336 using transfection reagent MegaTran 2.0 (Cat# [TT210002]).